



BALDOR® • *RELIANCE*

Product Information Packet

CECP3663T

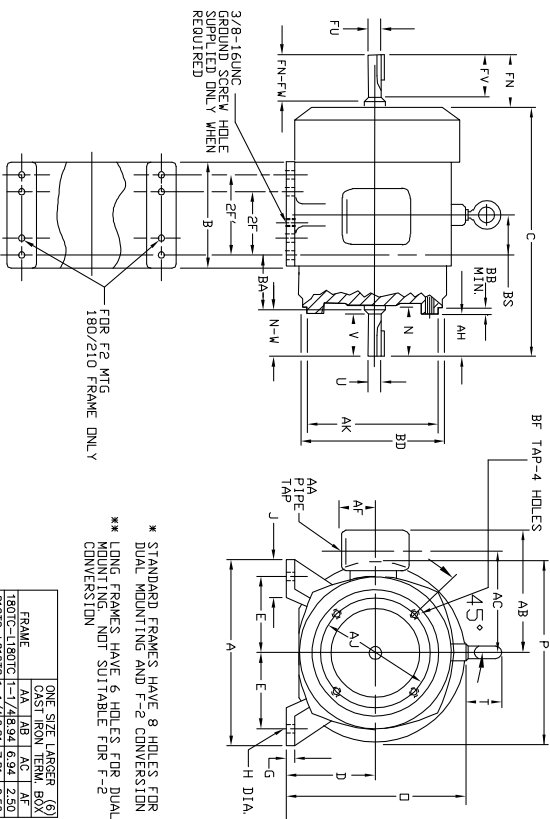
5HP,3505RPM,3PH,60HZ,184TC,TEFC,FOOT,

Product Detail			
Model Number:	CECP3663T	Environment:	Harsh / Mill & Chemical
Voltage:	230/460	HP:	5
Rpm:	3505	Efficiency:	Premium (XE)
Phase:	3	Frequency:	60
Inverter Duty:	*	Enclosure:	TEFC
Frame Group:	180	Frame Size:	184TC
Features:	General Purpose	Mounting:	Foot Mounted
Service Factor:	1.15	Enclosure Group:	TEFC
List Price:	1346.00	Price Symbol:	RXE22
Speed Range:	2501-3600	Insulation Class:	F
Nema Design:	B	Encl Enhancement:	
Catalog Page:	M-30	Dimension Sheet:	613051-504
Connection Diagram:	416820-1	Electric Design:	E02436-A-A001
Single HP:	5	Get Notes:	General Purpose
Revision:		Instruction Manual:	B-3620
Application:	General Purpose	Epact:	Y
Scaled Drawing:	A84297	Obsolete:	N
Last Data Source:	RAG,MADD	Bearing Type:	
Electrical Type:	P	Mounting Pos:	
Ambient:	40	Duty:	CONT
Amps:	12.0/6.00	Nominal Eff:	88.5
Kva Code:	J	Power Factor:	87.7
Poles:	02	Weight:	137

613051-504-SH1

DUTY MASTER ALTERNATING CURRENT MOTORS
 SQUIREL-CAGE INDUCTION
 X/T CONSTRUCTION
 ENCLASURE: TOTALLY ENCLOSED
 MOUNTING: FOOT, NEMA C FACE
 COOLING: FAN COOLED
 FRAMES 180TC THRU 210TC

DIST. CODE *W*



DIMENSIONS ARE IN INCHES. SEE SHEET 2 FOR DIMENSIONS IN MILLIMETERS.

FRAME	A	D(3)	E	G	H	J	O	P	T	AA	AB	AC	AF	BA	BB	BD	BF	MIN TAP DEPTH	AA (4)	
180TC-180TC	9.00	4.50	3.75	.44	.44	1.75	9.88	9.50	2.00	1	8.44	6.69	2.12	3.50	.25	9.00	1/2-.13	.75	7.25	8.500
210TC-210TC	10.50	5.25	4.25	.44	.44	2.00	11.25	11.00	2.00	1	9.31	7.56	2.12	4.25	.25	9.00	1/2-.13	.75	7.25	8.500

FRAME FOOT MTE SIZE	C	BS	B	2F	2F	AH	N	I	NEM	U(2)	V	SO	LGTH	FN	FN	RU(2)	TV	SS	LGTH	BS(5)	WEIGHT
180TC	18.27	16.38	2.79	7.00	4.50	2.62	3.00	2.75	1/280	2.50	.250	1.75	3.19	2.25	8.750	2.00	.188	1.38	100	100	130
180TC	18.41	17.88	3.50	8.50	4.50	2.62	3.00	2.75	1/250	2.50	.250	1.75	3.19	2.25	8.750	2.00	.188	1.38	130	130	130
210TC	21.00	20.06	3.50	8.50	5.50	3.12	3.62	3.38	1.3750	3.12	.312	2.38	3.75	2.75	11.250	2.50	.250	1.75	145	145	185
210TC	21.51	20.94	3.94	9.12	5.50	3.12	3.62	3.38	1.3750	3.12	.312	2.38	3.75	2.75	11.250	2.50	.250	1.75	195	195	195

- (1) SPECIAL DIMENSIONS ON THIS LINE
- (2) *U* AND *V* MAY VARY +.000, -.0005
- (3) *D* MAY VARY +.00, -.03
- (4) *AK* MAY VARY +.000, -.003
- FACE RUNOUT AND ECCENTRICITY .004 MAX. T. I. R.
- (5) MOTOR WEIGHTS MAY VARY BY 15% FOR NON-STANDARD RATINGS.
- (6) ONE SIZE LARGER TERMINAL BOX SUPPLIED ONLY WHEN SPECIFIED.

FRAME _____ TYPE _____ CERTIFIED FOR _____

DRIVER _____ ITEM _____ HP _____ RPK _____ PH _____ HZ _____ VOLTS _____

RELIANCE SALES ORDER _____ APPROVED BY _____ DATE _____

RELIANCE ELECTRIC DIMENSION SHEET 613051-504

DR. BY: K. THOMAS
 CK. BY: R. L. BRODIE
 APP. BY: G. KILBORN
 DATE: 3-4-86
 ISSUE DATE: APRIL 26, 1995

C/R 293454, 331585 10-541-00 10-541-05 E:\DS.AC\613051\504-SH1.DWG

LHS-405-150C19

CUSTOMER IS RESPONSIBLE FOR DETERMINING THAT MOTOR PERFORMANCE IS SUITABLE IN THE APPLICATION.

REV. DESC: LOADED INTO BUS	VERSION: 00	TDR: 000000455379
REV. LTR: -	REVISED: 11:11:48 02/01/2008	BY: RAGBLD1
FILE: \RAG\00005\694		
MTL: -		

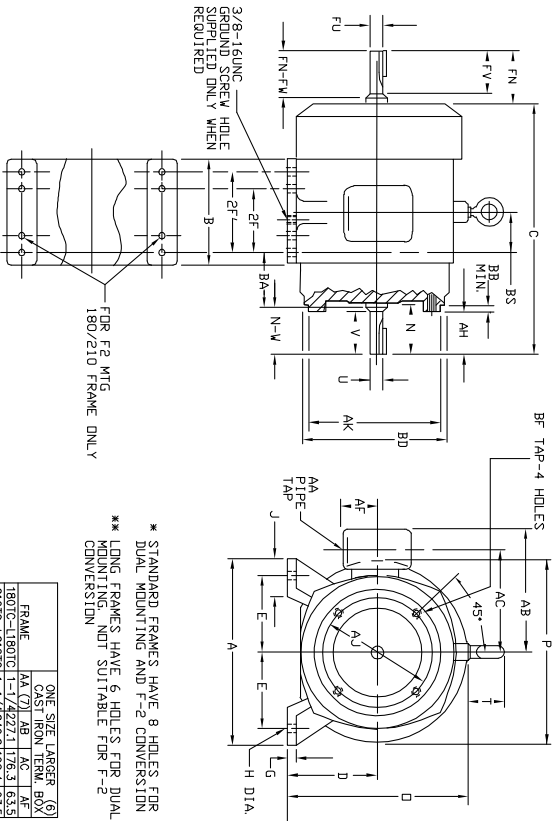
BALDOR • DODGE • RELIANCE

DIM SHEET 180TC-210TC STD DOUBLE EXTENSION WITH FEET

613051-504-SH2

DUTY MASTER ALTERNATING CURRENT MOTORS
 SQUIRREL-CAGE INDUCTION
 X/T CONSTRUCTION
 ENCLASURE: TOTALLY ENCLOSED
 MOUNTING: FOOT, NEMA "C" FACE
 COOLING: FAN COOLED
 FRAMES 180TC THRU 210TC

DIST. CODE "A"



* STANDARD FRAMES HAVE 8 HOLES FOR DUAL MOUNTING AND F-2 CONVERSION
 * LONG FRAMES HAVE 6 HOLES FOR DUAL MOUNTING. NOT SUITABLE FOR F-2 CONVERSION

FRAME	ONE SIZE LARGER (6)
180TC	AA (7)
210TC	AB (8)
210TC-220TC	AC (9)
(1)	AD (10)

DIMENSIONS ARE IN MILLIMETERS. SEE SHEET 1 FOR DIMENSIONS IN INCHES.

FRAME	A	D(3)	E	G	H	J	O	P	T	CAST IRON TERM. BOX	BE SHAFT AND KEY	FRONT END SHAFT AND KEY	WEIGHT (5)									
180TC	180TC	228	114.3	95.3	111.2	11.2	44.5	251.0	24.3	50.8	1	274.4	168.9	53.8	88.9	6.35	228.6	1/2-13	191	184.2	215.90	45
Z10TC	Z10TC	265	133.4	108.0	111.2	11.2	50.8	285.8	27.9	50.8	1	285.5	192.0	53.8	108.0	6.35	228.6	1/2-13	191	184.2	215.90	59

FRAME	FOOT M/TG	C	BS	B	3F	2F	AH	N	N-M	U(2)	V	SG	LGTH	FN	FN-M	U(2)	TV	SG	LGTH	K(4)	W
180TC	182	416.1	69.9	172.8	114.3	139.7	66.5	76.2	69.9	28.575	63.5	6.35	44.5	81.0	57.2	22.225	50.8	4.78	35.1	45	57
L180TC	L182	454.2	88.9	215.9	114.3	139.7	66.5	76.2	68.9	28.575	63.5	6.35	44.5	81.0	57.2	22.225	50.8	4.78	35.1	59	66
210TC	Z131	508.5	88.9	215.9	139.7	177.8	79.2	91.9	85.9	34.925	79.2	7.92	60.5	95.3	69.9	28.575	63.5	6.35	44.5	66	84
L210TC	Z151	531.9	100.1	231.6	139.7	177.8	79.2	91.9	85.9	34.925	79.2	7.92	60.5	95.3	69.9	28.575	63.5	6.35	44.5	88	88

- (1) SPECIAL DIMENSIONS ON THIS LINE
- (2) *U* AND *FU* MAY VARY +.000, -.127
- (3) *D* MAY VARY +.00, -.76
- (4) *AK* MAY VARY +.000, -.076
- FACE ROUNDTY AND .101 MAX. T. I. R.
- (5) MOTOR WEIGHTS MAY VARY BY 15%
- (6) FOR NON-STANDARD RATINGS.
- (6) ONE SIZE LARGER TERMINAL BOX SUPPLIED ONLY WHEN SPECIFIED

TYPE _____ CERTIFIED FOR _____

DATE _____ VOLTS _____

ORDER SALES ORDER _____ HP _____ PH _____ HZ _____

APPROVED BY _____

RELIANCE ELECTRIC DR. BY K. THOMAS
 CK. BY R.L. BRIDEN
 MFR. BY G. KILBIDEN
 DATE 2-4-86

613051-504
 DIMENSION SHEET
 ISSUE DATE: APRIL 26, 1995

C/R 293454 331585 10-541-00 10-541-05 E:\DS\AC\613051\504-SH2.DWG

ZHS-905-150E.19

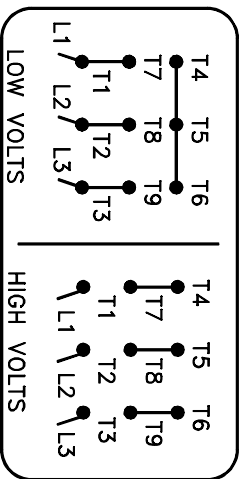
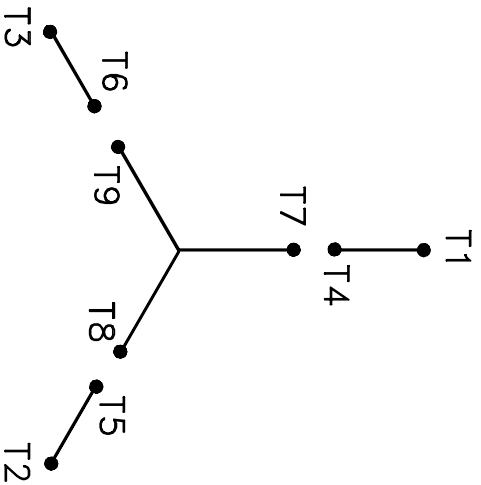
CUSTOMER IS RESPONSIBLE FOR DETERMINING THAT MOTOR PERFORMANCE IS SUITABLE IN THE APPLICATION.

REV. DESC: LOADED TO BUS, "LBS" TO "KG", SHEET "2" TO "1"	VERSION: 00	TDR: 000000455379
REV. LTR: -	REVISED: 11:19:48 02/01/2008	BY: RAGBLD1
FILE: \RAG\00005\695		
MTL: -		

BALDOR • DODGE • RELIANCE

DIM SHEET 180TC-210TC STD DOUBLE EXTENSION WITH FEET

A-C MOTOR
 CONNECTION DIAGRAM
 STANDARD 9 LEAD Y CONNECTED



(N.P. 1575-A)

CUSTOMER _____

CUSTOMER ORDER NO. _____

RELIANCE S.O. NO. _____

C/R

RELIANCE ELECTRIC
 CLEVELAND, OHIO 44117 RAG

DR. BY: N.W.
 CK. BY: J.C.V.
 APP. BY: H.E.L.
 DATE: 03/05/76

CONNECTION DIAGRAM

416820-1
 ISSUE DATE JUNE 15, 1976

E:\W-DIAG\416820\001 RAG

10-541-03

REL. S.O.	FRAME	HP	TYPE	PHASE/HERTZ	RPM	VOLTS
	184T	5	P	3/60	3505	230/460
AMPS	DUTY	AMB °C/ INSUL.	S.F.	NEMA DESIGN	CODE LETTER	ENCL.
12.0/6.0	CONT	40/B	1.15	B	J	TEFC-XE
E/S	ROTOR	TEST S.O.	TEST DATE	STATOR RES. @25 °C (BETWEEN LINES)		
543870	418424-5GE	---	---	.656/2.62		

PERFORMANCE


LOAD	HP	AMPERES	RPM	POWER FACTOR %	EFFICIENCY %
NO LOAD	0	1.9	3600	9.26	0
1/4	1.25	2.7	3578	51.8	84.7
2/4	2.50	3.5	3556	74.3	89.2
3/4	3.75	4.7	3533	83.7	89.6
4/4	5.00	6.0	3508	87.7	88.7
5/4	6.25	7.5	3480	89.7	87.3

SPEED TORQUE

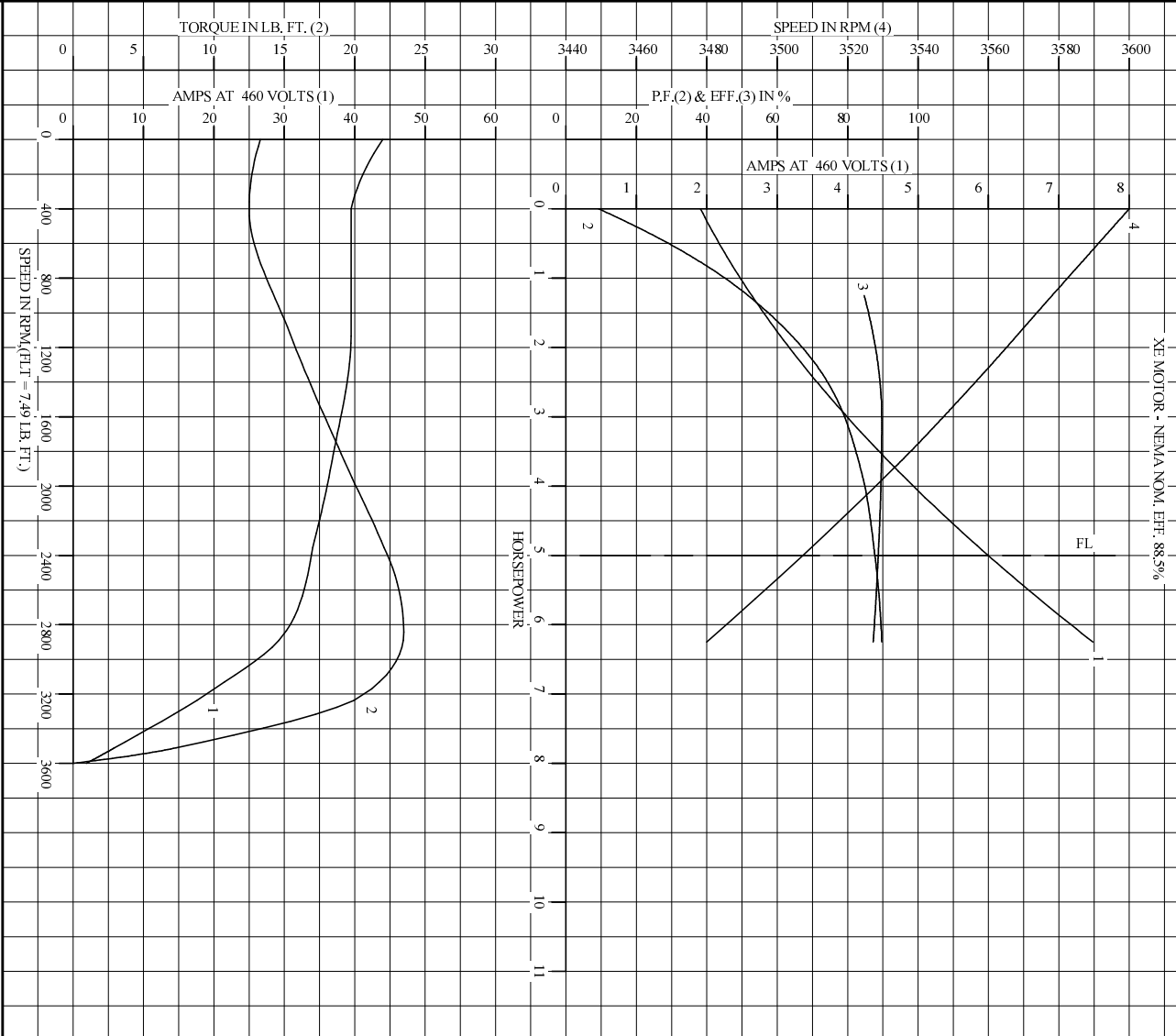
	RPM	TORQUE % FULL LOAD	TORQUE LB.-FT.	AMPERES
LOCKED ROTOR	0	178	13.3	44.0
PULL UP	400	167	12.5	39.5
BREAKDOWN	2850	313	23.5	30.0
FULL LOAD	3508	100	7.49	6.0

AMPERES SHOWN FOR 460. VOLT CONNECTION. IF OTHER VOLTAGE CONNECTIONS ARE AVAILABLE, THE AMPERES WILL VARY INVERSELY WITH THE RATED VOLTAGE

REMARKS: TYPICAL DATA
XE MOTOR - NEMA NOM. EFF. 88.5%

	DR. BY A. T. LONG	A-C MOTOR PERFORMANCE DATA E02436-A-A001 ISSUE DATE 11/30/99
	CK. BY R. H. KIRK APP. BY R. A. BRYANT DATE 08/13/98	

RET. S.O. _____ RPM 3505 S.F. 1.15 ROTOR 418424-5CE
 FRAME 184T VOLTS 230/460 NEMA DESIGN B TEST S.O. TYPICAL DATA
 HP 5 AMPS 12.0/6.0 CODE LETTER J TEST DATE ---
 TYPE P DUTY CONT ENCLOSURE TEFC-XE STATOR RES. @ 25 °C .656/2.62
 PHASE/HERTZ 3/60 AMB °C/INSUL 40/B E/S 543870 OHMS (BETWEEN LINES)



AMPERES SHOWN FOR 460 VOLT CONNECTION, IF OTHER VOLTAGE CONNECTIONS ARE AVAILABLE, THE AMPERES WILL VARY INVERSELY WITH THE RATED VOLTAGE.



DR. BY A.T. LONG
 CK. BY R.H. KIRK
 APP. BY R.A. BRYANT
 DATE 08/13/98

A-C MOTOR
PERFORMANCE
CURVES
 E02436-A-A001
 ISSUE DATE 11/30/99