



BALDOR® • *RELIANCE*

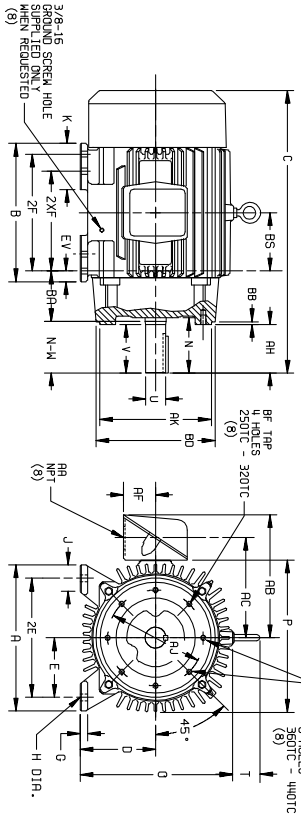
Product Information Packet

CECP4104T-4

30HP,1765RPM,3PH,60HZ,286TC,TEFC,FOOT,

Product Detail			
Model Number:	CECP4104T-4	Environment:	Harsh / Mill & Chemical
Voltage:	460	HP:	30
Rpm:	1765	Efficiency:	Premium (XE)
Phase:	3	Frequency:	60
Inverter Duty:	*	Enclosure:	TEFC
Frame Group:	280	Frame Size:	286TC
Features:	General Purpose	Mounting:	Foot Mounted
Service Factor:	1.15	Enclosure Group:	TEFC
List Price:	4175.00	Price Symbol:	RXE22
Speed Range:	1201-1800	Insulation Class:	F
Nema Design:	B	Encl Enhancement:	
Catalog Page:	M-31	Dimension Sheet:	611740-503
Connection Diagram:	416820-25	Electric Design:	E09085-B-E011
Single HP:	30	Get Notes:	General Purpose
Revision:		Instruction Manual:	B-3620
Application:	General Purpose	Epact:	Y
Scaled Drawing:	A84308	Obsolete:	N
Last Data Source:	RAG,MADD	Bearing Type:	
Electrical Type:	P	Mounting Pos:	
Ambient:	40	Duty:	CONT
Amps:	36.1	Nominal Eff:	93.6
Kva Code:	G	Power Factor:	83.1
Poles:	04	Weight:	475

DUTY MASTER ALTERNATING CURRENT MOTORS
 SQUIRREL-CAGE INDUCTION
 ENCLOSURE: TOTALLY ENCLOSED
 MOUNTING: FOOT, NEMA "C" FACE
 COOLING: FAN COOLED
 CAST IRON CONSTRUCTION
 FRAME 250TC THRU 440TC



FRAME A D(2) E G H J K EV O P T I (AST IRON TERMINAL BOX) (6)

2541C-280TC	317.5	158.8	127.0	19.1	14.2	6.3	---	23.4	336.6	338.6	82.0	1-1/2	427.6	622.8	63.5	120.76	4228.6	172-13	19.1	184.2	215.90
2841C-280TC	349.3	177.8	138.7	19.1	14.2	6.3	---	23.4	374.7	378.0	82.0	1-1/2	427.6	622.8	63.5	120.76	4228.6	172-13	19.1	184.2	215.90
3241C-320TC	393.7	203.2	158.8	22.4	17.5	6.9	---	24.3	433.9	433.9	82.0	1-1/2	427.6	622.8	63.5	120.76	4228.6	172-13	19.1	184.2	215.90
3641C-360TC	438.1	228.7	177.8	22.4	17.5	6.9	---	24.3	472.8	472.8	82.0	1-1/2	427.6	622.8	63.5	120.76	4228.6	172-13	19.1	184.2	215.90
4041C-400TC	482.6	254.0	203.2	25.9	20.0	7.6	---	25.2	501.3	501.3	82.0	1-1/2	427.6	622.8	63.5	120.76	4228.6	172-13	19.1	184.2	215.90
4441C-440TC	533.4	279.4	228.7	25.9	20.0	7.6	---	25.2	540.2	540.2	82.0	1-1/2	427.6	622.8	63.5	120.76	4228.6	172-13	19.1	184.2	215.90

(1) DIMENSIONS ARE IN MILLIMETERS. SEE SHEET 1 FOR DIMENSIONS IN INCHES.

FRAME	SIZE	C	BS	B	ZF	(4)	N	AM	(N-W)	U(3)	V	SD	LETH.	WEIGHT
2541C	636.6	127.0	304.8	---	209.6	103.1	95.3	101.6	41.28	95.3	9.5	73.2	156	
2841C	636.6	127.0	304.8	---	254.0	103.1	95.3	101.6	41.28	95.3	9.5	73.2	161	
3241C	697.0	139.7	330.2	---	241.3	127.0	111.3	117.3	47.63	111.3	12.7	82.6	220	
3641C	697.0	139.7	330.2	---	285.8	127.0	111.3	117.3	47.63	111.3	12.7	82.6	227	
4041C	753.2	152.4	374.7	---	266.7	142.7	127.0	133.4	53.98	127.0	12.7	98.6	293	
4441C	753.2	152.4	374.7	---	308.3	142.7	127.0	133.4	53.98	127.0	12.7	98.6	293	
3241SC	733.2	152.4	374.7	---	285.8	104.6	88.9	95.3	47.63	88.9	12.7	50.8	399	
3641SC	795.3	155.4	381.0	---	285.8	104.6	88.9	95.3	47.63	88.9	12.7	50.8	396	
4041SC	896.9	174.8	406.4	---	311.2	104.6	88.9	95.3	47.63	88.9	12.7	50.8	408	
4041SC	896.9	174.8	406.4	---	311.2	114.3	101.6	106.0	53.98	101.6	12.7	63.9	570	
4051SC	896.9	174.8	406.4	---	311.2	104.6	88.9	95.3	47.63	88.9	12.7	50.8	399	
4441SC	1133.3	209.6	482.6	---	368.3	127.1	209.6	215.9	60.33	209.6	22.2	174.8	788	
4441SC	1133.3	209.6	482.6	---	368.3	131.8	114.3	120.7	60.33	114.3	15.9	76.2	781	
4451SC	1133.3	209.6	482.6	---	419.1	227.1	209.6	215.9	60.33	209.6	22.2	174.8	875	
4451SC	1038.4	209.6	482.6	---	419.1	131.8	114.3	120.7	60.33	114.3	15.9	76.2	867	

- (1) SPECIAL DIMENSIONS APPLYING TO THIS ORDER ON THIS LINE. CONDUIT BOX LOCATED ON OPPOSITE SIDE WHEN F-2W-1, W-4-W-SW-7, OR C-1 MOUNTING IS SPECIFIED.
- (2) "D" VARIES $\frac{1}{16}$ TO 41.27 DIA. +.00, -.15
- (3) "U" VARIES $\frac{1}{16}$ TO 41.27 DIA. +.000, -.03
- (4) ALL FRAMES HAVE EIGHT MOUNTING HOLES FOR DUAL MOUNTING. MAXIMUM PERMISSIBLE SHAFT RUNOUT WHEN MEASURED AT END OF STD. SHAFT EXTENSION IS .002 T.I.R. UP TO AND INCLUDING 41.27 DIA. AND .08 T.I.R. 41.27 DIA. TO 127 MILLIMETER DIA.
- (5) MOTOR WEIGHTS MAY VARY BY 1% DEPENDING UPON RATING.
- (6) "AK" VARIES $\frac{1}{16}$ TO 290TC +.00, -.08
- (7) "M-W" VARIES +.0, -.6, 4
- (8) DIMENSIONS ARE IN INCHES.

FRAME _____ TYPE _____ CERTIFIED FOR _____
 ORDER _____ ITEM _____ HP _____ RPM _____ PH _____ HZ _____ VOLTS _____
 SALES ORDER _____ APPROVED BY _____ DATE _____

ZHS-303-074119

CUSTOMER IS RESPONSIBLE FOR DETERMINING THAT MOTOR PERFORMANCE IS SUITABLE IN THE APPLICATION.

REV. DESC: REMOVING TITLEBLOCK		
REV. LTR: A	VERSION: 01	TDR: 00000448517
FILE: \RAG\00004\531	REVISED: 14:27:09 11/07/2007	BY: CONBPM
MTL: -		



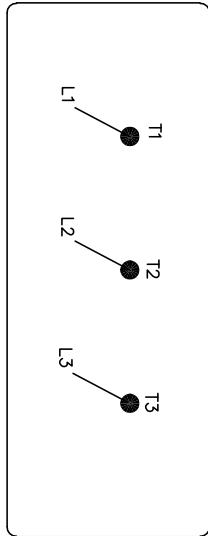
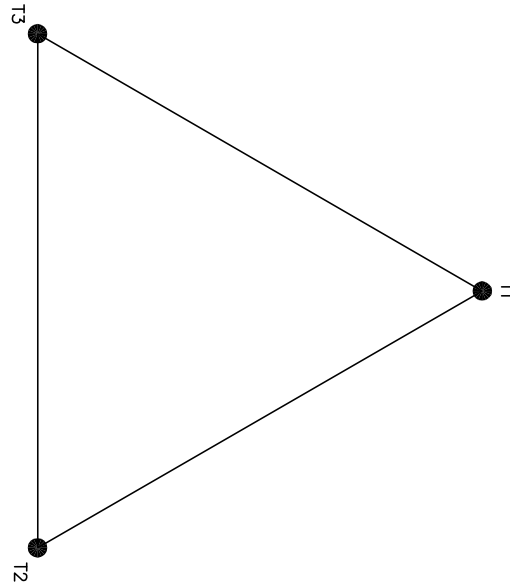
DIM SHT 250TC-440TC TEFC FT MTG C FACE T & TS SGL EXT XT

611740-503-SH2

416820-025

A-C MOTOR
 CONNECTION DIAGRAM
 STANDARD 3 LEAD DELTA CONNECTED

416820-025



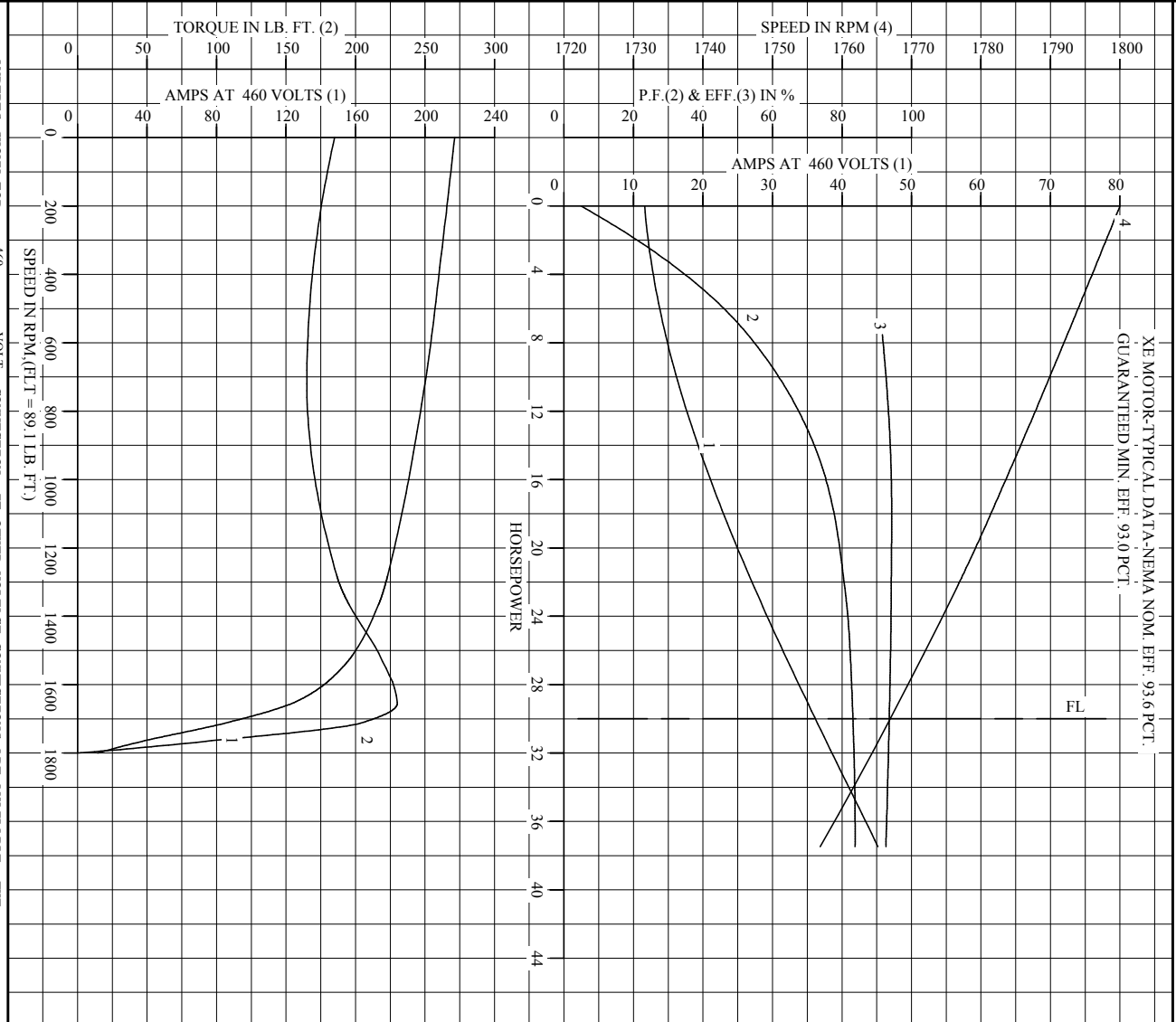
(N.P. 1575-BA)

REV. DESC: REMOVE EXCESS INFORMATION		
REV. LTR: B	VERSION: 02	TDR: 000000477984
FILE: \RAG\00001\809	REVISED: 16:03:29 09/25/2008	
MTL: -	BY: RAGZJR	

Baldor • Dodge • Reliance

CONNECT DIAGRAM STD 3 LEAD DELTA CONNECTED
 SH 1 of 1

RBL S.O. _____ RPM 1765 S.F. 1.15 ROTOR 418139-37ME
 FRAME 286T VOLTS 460 NEMA DESIGN B TEST S.O. ---
 HP 30 AMPS 36.1 CODE LETTER G TEST DATE ---
 TYPE P DUTY CONT ENCLOSURE FCKE STATOR RES. @ 25 °C .264
 PHASE/HERTZ 3/60 AMB °C/INSUL 40/F E/S 488466 OHMS (BETWEEN LINES)



AMPERES SHOWN FOR 460 VOLT CONNECTION, IF OTHER VOLTAGE CONNECTIONS ARE AVAILABLE, THE AMPERES WILL VARY INVERSELY WITH THE RATED VOLTAGE.

BALDOR
BALDOR • DOUGLASS • RELIANCE

DR. BY P.B. GREENE
 CK. BY K.W. KANOUFF
 App. BY K.W. KANOUFF
 DATE 01/17/95

A-C MOTOR
PERFORMANCE
CURVES

E09085-B-E011
 ISSUE DATE 01/17/95

Printed on 11/24/08 13:51 @ ragsam

REL. S.O.	FRAME	HP	TYPE	PHASE/HERTZ	RPM	VOLTS
	286T	30	P	3/60	1765	460
AMPS	DUTY	AMB °C/ INSUL.	S.F.	NEMA DESIGN	CODE LETTER	ENCL.
36.1	CONT	40/F	1.15	B	G	FOXE
E/S	ROTOR	TEST S.O.	TEST DATE	STATOR RES. @25 °C (OHMS (BETWEEN LINES))		
488466	418139-37ME	---	---	.264		

PERFORMANCE


LOAD	HP	AMPERES	RPM	POWER FACTOR	% EFFICIENCY
NO LOAD	0	11.6	1800	4.89	0
1/4	7.52	14.5	1792	52.9	91.6
2/4	15.0	20.2	1785	73.9	94.1
3/4	22.5	27.6	1776	80.9	94.2
4/4	30.0	36.1	1767	83.1	93.6
5/4	37.5	45.2	1757	83.8	92.6

SPEED TORQUE

	RPM	TORQUE % FULL LOAD	TORQUE LB.-FT.	AMPERES
LOCKED ROTOR	0	208	185	217
PULL UP	720	185	165	200
BREAKDOWN	1656	258	230	123
FULL LOAD	1767	100	89.1	36.1

AMPERES SHOWN FOR 460. VOLT CONNECTION. IF OTHER VOLTAGE CONNECTIONS ARE AVAILABLE, THE AMPERES WILL VARY INVERSELY WITH THE RATED VOLTAGE

REMARKS: XE MOTOR-TYPICAL DATA-NEMA NOM. EFF. 93.6 PCT.
GUARANTEED MIN. EFF. 93.0 PCT.

 BALDOR • DODGE • RELIANCE	DR. BY P.B. GREENE	A-C MOTOR PERFORMANCE DATA E09085-B-E011 ISSUE DATE 01/17/95
	CK. BY K.W. KANOUF APP. BY K.W. KANOUF DATE 01/17/95	