



BALDOR® • *RELIANCE*

Product Information Packet

CECP4110T

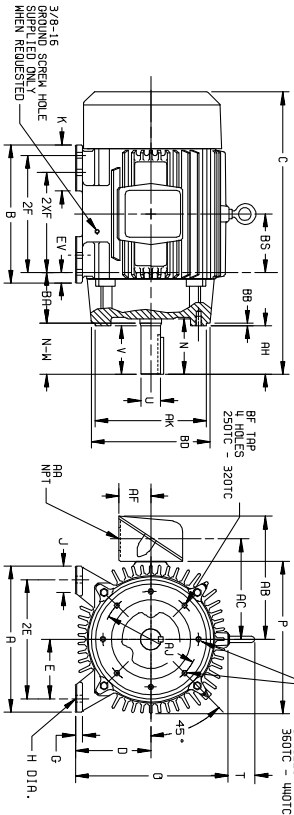
40HP,1775RPM,3PH,60HZ,324TC,TEFC,FOOT

Product Detail			
Model Number:	CECP4110T	Environment:	Harsh / Mill & Chemical
Voltage:	230/460	HP:	40
Rpm:	1775	Efficiency:	Premium (XE)
Phase:	3	Frequency:	60
Inverter Duty:	*	Enclosure:	TEFC
Frame Group:	320	Frame Size:	324TC
Features:	General Purpose	Mounting:	Foot Mounted
Service Factor:	1.15	Enclosure Group:	TEFC
List Price:	5329.00	Price Symbol:	SD
Speed Range:	1201-1800	Insulation Class:	F
Nema Design:	B	Encl Enhancement:	
Catalog Page:	M-31,B	Dimension Sheet:	611740-503
Connection Diagram:	416820-2	Electric Design:	W00189-A-A001
Single HP:	40	Get Notes:	General Purpose
Revision:		Instruction Manual:	B-3620
Application:	General Purpose	Epact:	Y
Scaled Drawing:	A84310	Obsolete:	N
Last Data Source:	RAG,MADD	Bearing Type:	
Electrical Type:	P	Mounting Pos:	
Ambient:	40	Duty:	CONT
Amps:	95.4/47.7	Nominal Eff:	94.1
Kva Code:	G	Power Factor:	83.3
Poles:	04	Weight:	633

Parts List			
Product ID	Description	Quantity	List Price
406099000A	PLUG for Fan Cover	20,002,000.200	
418151057A	DRAIN,ODE BRKT	20,002,000.200	

611740-503-SH1

DUTY MASTER ALTERNATING CURRENT MOTORS
 SQUIRREL-CAGE INDUCTION
 ENCLOSURE: TOTALLY ENCLOSED
 MOUNTING: FOOT, NEMA "C" FACE
 FRAMES 250TC THRU 440TC
 CAST IRON CONSTRUCTION
 COOLING: FAN COOLED



DIMENSIONS ARE IN INCHES. SEE SHEET 2 FOR DIMENSIONS IN MILLIMETERS.

FRAME	A	D(2)	E	G	H	J	K	EV	O	P	T	AA	AB	AC	AF	BA	BB	BD	BF	MM	LN	AJ	(6)
254TC-256TC	12.50	6.25	5.00	.75	1.56	2.50	---	1.00	13.25	13.25	2.44	1.1	4/10.81	8.81	2.50	4.75	2.5	9.00	1/2-13	.75	7.25	8.50	
264TC-268TC	13.75	7.00	5.50	.75	1.56	2.50	---	1.00	14.75	14.88	2.44	1.1	2/12.62	10.19	3.00	4.75	2.5	11.25	1/2-13	.75	9.00	10.50	
324TC-326TC	15.50	8.00	6.25	.88	1.69	2.75	4.50	1.38	16.69	17.00	2.44	1.1	15.44	11.69	3.62	5.25	2.5	13.12	5/8-11	.94	11.00	12.50	
364TC-368TC	17.00	9.00	7.00	.88	1.69	2.75	3.88	1.38	18.50	19.50	2.94	1.1	18.00	13.81	4.12	5.88	2.5	13.00	5/8-11	.94	11.00	12.50	
404TC-408TC	19.00	10.00	8.00	1.12	1.81	3.25	4.62	1.13	21.51	22.50	2.94	1.1	19.25	15.06	4.12	6.62	2.5	13.12	5/8-11	.94	11.00	12.50	
444TC-448TC	21.00	11.00	9.00	1.12	1.81	3.25	5.25	1.25	23.58	25.25	2.93	1.1	22.19	17.44	6.00	7.50	2.5	16.75	9/8-11	.94	14.00	16.00	

FRAME	A	B	C	BS	B	2F	(4)	N	AA	N(W)	U(3)	V	SO	LGTH	WEIGHT
254TC	25.06	5.00	12.00	10.00	---	8.25	4.06	3.75	4.00	1.625	3.75	3.75	2.88	3.45	
264TC	27.44	5.50	13.00	---	---	9.50	5.00	4.38	4.62	1.875	4.38	5.00	3.25	4.85	
284TC	28.06	5.50	13.00	---	---	9.50	5.00	3.25	3.25	1.825	3.00	3.75	1.88	4.85	
286TC	27.44	5.50	13.00	---	---	5.00	4.38	4.62	1.875	4.38	5.00	3.25	5.00	5.00	
286TC	26.06	5.50	13.00	---	---	10.50	5.62	5.00	5.25	1.625	3.00	3.75	1.88	5.00	
324TC	30.44	6.00	14.75	---	---	10.50	6.12	5.50	5.25	1.975	3.50	5.00	3.88	6.05	
324TC	28.94	6.00	14.75	---	---	10.50	5.12	3.50	3.25	1.975	3.50	5.00	2.00	6.05	
324TC	28.94	6.00	14.75	---	---	12.00	4.12	3.50	3.75	1.875	3.50	5.00	2.00	6.46	
324TC	28.94	6.00	14.75	---	---	11.25	6.25	5.62	5.88	2.375	5.62	6.25	4.25	8.80	
364TC	33.44	6.12	15.00	---	---	11.25	6.25	5.62	5.88	2.375	5.62	6.25	4.25	8.80	
364TC	31.31	6.12	15.00	---	---	11.25	4.12	3.50	3.75	1.875	3.50	5.00	2.00	8.74	
364TC	33.44	6.12	15.00	---	---	12.25	6.25	5.62	5.88	2.375	5.62	6.25	4.25	9.05	
404TC	31.31	6.12	15.00	---	---	12.25	4.12	3.50	3.75	1.875	3.50	5.00	2.00	8.99	
404TC	38.31	6.88	16.00	---	---	12.25	7.50	7.25	2.875	7.00	7.50	5.62	12.65		
404TC	38.31	6.88	16.00	---	---	12.25	4.50	4.00	4.25	2.125	4.00	5.00	2.75	12.65	
404TC	38.31	6.88	16.00	---	---	12.25	7.50	7.00	7.25	2.875	7.00	7.50	5.62	13.05	
409TC	35.31	6.88	16.00	---	---	13.75	8.50	4.00	4.25	2.125	4.00	5.00	2.75	13.86	
444TC	40.82	8.25	18.00	---	---	14.50	5.18	4.50	4.75	2.375	4.50	5.00	3.00	17.22	
444TC	40.82	8.25	18.00	---	---	16.50	8.94	8.25	8.50	3.375	8.25	8.75	6.88	19.26	
445TC	44.62	8.25	18.00	---	---	18.50	8.94	8.25	8.50	3.375	8.25	8.75	6.88	19.26	
445TC	40.88	8.25	18.00	---	---	18.50	5.19	4.50	4.75	2.375	4.50	5.00	3.00	19.12	

- (1) SPECIAL DIMENSIONS APPLYING TO THIS ORDER ON THIS LINE.
- (2) "P" VARIES [280TC - 320TC +.00, -.03]
- (3) "U" VARIES [380TC - 440TC +.00, -.06]
- (4) "V" VARIES [H25 AND LARGER +.000, -.001]
- (5) ALL FRAMES HAVE EIGHT MOUNTING HOLES FOR DUAL MOUNTING.
- (6) MOTOR WEIGHTS MAY VARY BY 15% DEPENDING UPON RATING.
- (7) "A" VARIES [280TC - 280TC +.000, -.003]
- (8) "N" VARIES [320TC - 440TC +.000, -.005]
- (9) "W" VARIES +.00, -.25.

CONDUIT BOX LOCATED ON OPPOSITE SIDE WHEN F-2-W-1, W-4-W-5-W-7, OR C-1 MOUNTING IS SPECIFIED.

IF MOUNTING CLEARANCE DETAILS ARE REQUIRED, CONSULT FACTORY.

MAXIMUM PERMISSIBLE SHAFT RUNOUT WHEN MEASURED AT END OF STD. SHAFT EXTENSION IS .002 T.I.R. UP TO AND INCLUDING 1.625 DIA. AND .003 T.I.R. 1.625 DIA. TO 5 INCH DIA.

FACE RUNOUT AND [250TC - 280TC INCL. .004 MAX. T.I.R.] [320TC - 440TC INCL. .007 MAX. T.I.R.]

FRAME: _____ TYPE: _____ CERTIFIED FOR: _____

ORDER: _____ ITEM: _____ HP: _____ RPM: _____ PH: _____ HZ: _____ VOLTS: _____

SALES ORDER: _____ APPROVED BY: _____ DATE: _____

1HS-305-0471119

CUSTOMER IS RESPONSIBLE FOR DETERMINING THAT MOTOR PERFORMANCE IS SUITABLE IN THE APPLICATION.

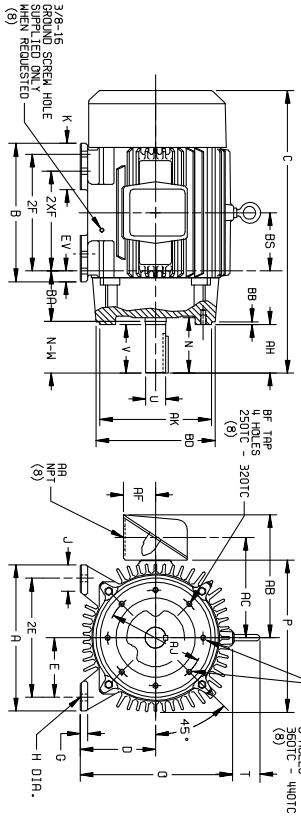
REV. DESC: REMOVING TITLEBLOCK	VERSION: 01	TDR: 000000448517
REV. LTR: A	REVISED: 14: 21: 04 11/07/2007	BY: CONBPM
FILE: \RAG\00004\530		
MTL: -		

BALDOR • DODGE • RELIANCE

DIM SHT 250TC-440TC TEFC FT MTG C FACE T & TS SGL EXT XT

DUTY MASTER ALTERNATING CURRENT MOTORS

ENCLOSURE: TOTALLY ENCLOSED
MOUNTING: FOOT, NEMA "C" FACE
SQUIRREL-CAGE INDUCTION
FRAMES 250TC THRU 440TC
COOLING: FAN COOLED
CAST IRON CONSTRUCTION



DIMENSIONS ARE IN MILLIMETERS. SEE SHEET 1 FOR DIMENSIONS IN INCHES.

FRAME	A	D(2)	E	G	H	J	K	EV	O	P	T	CAST IRON TERMINAL BOX	AB	AC	AF	BA	BB	BD	BF(8)	THD	AU	AK
2541C-280TC	317.5	158.8	127.0	19.1	14.2	6.3	---	23.4	336.6	338.6	82.0	1-1/4	427.6	62.3	120.76	422.8	117.2	131.9	184.2	215.90		
2841C-280TC	349.3	177.8	138.1	19.1	14.2	6.3	---	23.4	374.7	378.0	82.0	1-1/4	427.6	62.3	120.76	422.8	117.2	131.9	184.2	215.90		
3241C-320TC	393.7	203.2	158.8	22.4	17.5	6.9	---	23.4	433.9	433.9	82.0	1-1/4	427.6	62.3	120.76	422.8	117.2	131.9	184.2	215.90		
3641C-360TC	438.1	228.6	177.8	22.4	17.5	6.9	---	23.4	493.2	493.2	82.0	1-1/4	427.6	62.3	120.76	422.8	117.2	131.9	184.2	215.90		
4041C-400TC	482.6	254.0	203.2	25.4	20.3	7.6	---	23.4	552.5	552.5	82.0	1-1/4	427.6	62.3	120.76	422.8	117.2	131.9	184.2	215.90		
4441C-440TC	533.4	279.4	228.6	28.4	23.0	8.3	---	23.4	611.8	611.8	82.0	1-1/4	427.6	62.3	120.76	422.8	117.2	131.9	184.2	215.90		

FRAME	C	BS	B	ZF	(4)	N	AM	(N-W)	U(3)	V	SD	LETH.	WEIGHT
2541C	636.6	127.0	304.8	---	209.6	103.1	95.3	101.6	41.28	95.3	9.5	73.2	156
2841C	636.6	127.0	304.8	284.0	---	103.1	95.3	101.6	41.28	95.3	9.5	73.2	161
2841TC	697.0	139.7	330.2	---	241.3	127.0	111.3	117.3	47.63	111.3	12.7	82.6	220
2841SC	661.9	139.7	330.2	---	241.3	91.9	76.2	82.6	41.28	76.2	9.5	47.8	220
2861C	697.0	139.7	330.2	279.4	---	127.0	111.3	117.3	47.63	111.3	12.7	82.6	227
2861SC	661.9	139.7	330.2	279.4	---	91.9	76.2	82.6	41.28	76.2	9.5	47.8	227
3241C	733.2	152.4	374.7	---	286.7	134.4	108.9	117.3	53.4	108.9	12.7	50.6	274
3241SC	733.2	152.4	374.7	---	286.7	102.6	88.9	95.3	47.63	88.9	12.7	50.6	274
3261C	773.2	152.4	374.7	304.8	---	142.7	127.0	133.4	53.98	127.0	12.7	98.6	293
3261SC	735.1	152.4	374.7	304.8	---	104.6	88.9	95.3	47.63	88.9	12.7	50.8	293
3541C	849.4	155.4	381.0	---	285.8	158.8	142.7	149.4	60.33	142.7	15.9	108.0	399
3541SC	795.3	155.4	381.0	---	285.8	104.6	88.9	95.3	47.63	88.9	12.7	50.8	396
3651C	849.4	155.4	381.0	311.2	---	158.8	142.7	149.4	60.33	142.7	15.9	108.0	411
3651SC	795.3	155.4	381.0	311.2	---	104.6	88.9	95.3	47.63	88.9	12.7	50.8	408
4041C	973.1	174.8	406.4	---	311.2	174.3	101.6	108.0	53.98	101.6	12.7	69.9	570
4041SC	896.9	174.8	406.4	---	311.2	104.6	88.9	95.3	47.63	88.9	12.7	50.8	570
4051C	896.9	174.8	406.4	349.3	---	130.9	76.2	82.6	41.28	76.2	9.5	47.8	582
4051SC	808.3	174.8	406.4	349.3	---	113	108.9	101.6	47.63	108.9	12.7	50.6	582
4441C	1133.3	209.6	482.6	---	388.3	227.1	209.6	215.9	60.33	209.6	22.2	174.8	788
4441SC	1038.4	209.6	482.6	---	388.3	131.8	114.3	120.7	60.33	114.3	15.9	76.2	781
4451C	1133.3	209.6	482.6	419.1	---	227.1	209.6	215.9	60.33	209.6	22.2	174.8	875
4451SC	1038.4	209.6	482.6	419.1	---	131.8	114.3	120.7	60.33	114.3	15.9	76.2	867

- (1) SPECIAL DIMENSIONS APPLYING TO THIS ORDER ON THIS LINE. CONDUIT BOX LOCATED ON OPPOSITE SIDE WHEN F-2W-1, W-4-W-S-W-7, OR C-1 MOUNTING IS SPECIFIED.
- (2) "D" VARIES \pm .250TC - .320TC +0.0, -0.8
 \pm .360TC - .440TC +0.0, -1.5
- (3) "U" VARIES \pm .4127 DIA. +0.00, -0.13
 \pm .4127 AND LARGER +0.0, -0.13
- (4) ALL FRAMES HAVE EIGHT MOUNTING HOLES FOR DUAL MOUNTING. MAXIMUM PERMISSIBLE SHAFT RUNOUT WHEN MEASURED AT END OF STD. SHAFT EXTENSION IS .002 T.I.R. UP TO AND INCLUDING .4127 DIA. AND .08 T.I.R. 41.27 DIA. TO 127 MILLIMETER DIA.
- (5) MOTOR WEIGHTS MAY VARY BY 1% DEPENDING UPON RATING.
- (6) "AK" VARIES \pm .250TC - .280TC +.00, -.08
 \pm .320TC - .280TC +.00, -.08
- (7) "N-W" VARIES +0.0, -6.4
- (8) DIMENSIONS ARE IN INCHES.

FRAME _____ TYPE _____ CERTIFIED FOR _____
 ORDER _____ ITEM _____ HP _____ RPM _____ PH _____ HZ _____ VOLTS _____
 SALES ORDER _____ APPROVED BY _____ DATE _____

ZHS-305-074119

611740-503-SH2

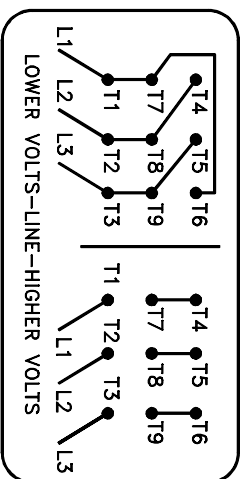
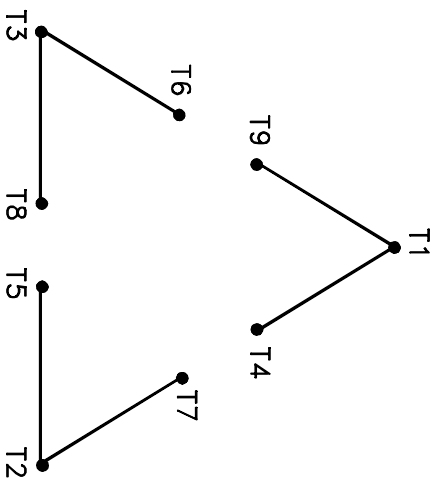
CUSTOMER IS RESPONSIBLE FOR DETERMINING THAT MOTOR PERFORMANCE IS SUITABLE IN THE APPLICATION.

REV. DESC: REMOVING TITLEBLOCK		
REV. LTR: A	VERSION: 01	TDR: 00000448517
FILE: \RAG\00004\531	REVISED: 14:27:09 11/07/2007	BY: CONBPM
MTL: -		



DIM SHT 250TC-440TC TEFC FT MTG C FACE T & TS SGL EXT XT

A-C MOTOR
 CONNECTION DIAGRAM
 STANDARD 9 LEAD DELTA-CONNECTED



(N.P. 1575-B)

CUSTOMER _____ RELIANCE S.O. NO. _____
 ORDER NO. _____

<p>RELIANCE ELECTRIC CLEVELAND, OHIO 44117</p>	<p>DR. BY - N.F.J. CK. BY - D.G.Y. APP. BY - J.E.F. DATE - 3/31/76</p>
<p>E:\W-DIAG\416820\002 RAG</p>	<p>CONNECTION DIAGRAM</p>
<p>416820-2</p>	<p>ISSUE DATE OCT. 30, 1986</p>

C/R 276062

10-541-06

REL. S.O.	FRAME	HP	TYPE	PHASE/HERTZ	RPM	VOLTS
	324T	40	P	3/60	1775	230/460
AMPS	DUTY	AMB °C/ INSUL.	S.F.	NEMA DESIGN	CODE LETTER	ENCL.
95.4/47.7	CONT	40/F	1.15	B	G	FCXE
E/S	ROTOR	TEST S.O.	TEST DATE	STATOR RES. @25 °C (BETWEEN LINES)		
489107	418140-31-NE	---	---	.0430/.172		

PERFORMANCE


LOAD	HP	AMPERES	RPM	POWER FACTOR %	EFFICIENCY %
NO LOAD	0	15.4	1800	4.39	0
1/4	10.0	19.3	1794	52.6	92.4
2/4	20.0	26.9	1788	73.5	94.6
3/4	30.0	36.7	1782	80.7	94.7
4/4	40.0	47.7	1775	83.3	94.2
5/4	50.0	59.4	1767	84.4	93.4

SPEED TORQUE

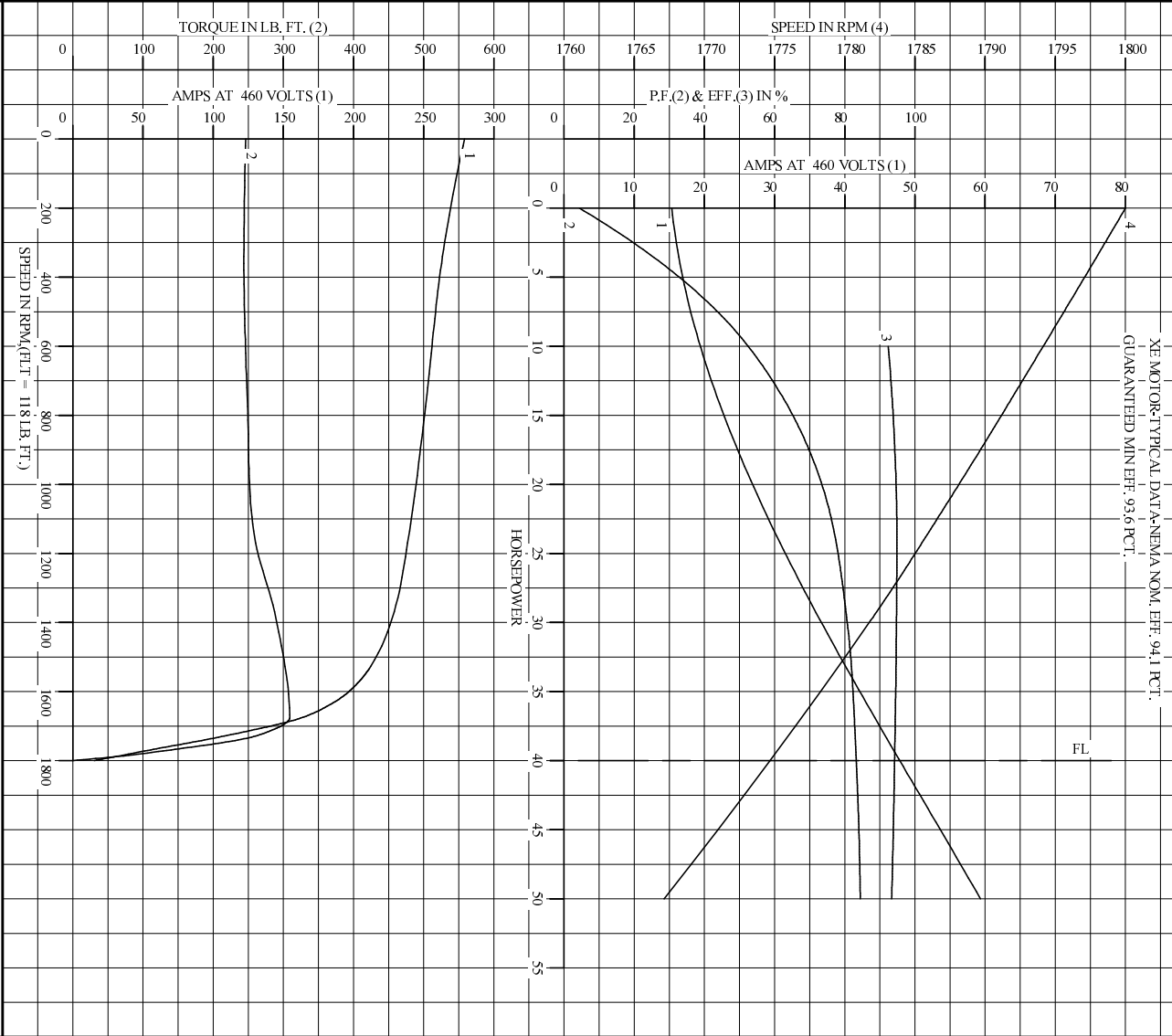
	RPM	TORQUE % FULL LOAD	TORQUE LB.-FT.	AMPERES
LOCKED ROTOR	0	208	246	279
PULL UP	360	206	244	263
BREAKDOWN	1675	261	309	163
FULL LOAD	1775	100	118	47.7

AMPERES SHOWN FOR 460. VOLT CONNECTION. IF OTHER VOLTAGE CONNECTIONS ARE AVAILABLE, THE AMPERES WILL VARY INVERSELY WITH THE RATED VOLTAGE

REMARKS: XE MOTOR-TYPICAL DATA-NEMA NOM. EFF. 94.1 PCT.
GUARANTEED MIN EFF. 93.6 PCT.

	DR. BY P.B. GREENE	A-C MOTOR PERFORMANCE DATA W00189-A-A001 ISSUE DATE 08/10/93
	CK. BY K.W. KANOUFF APP. BY K.W. KANOUFF DATE 08/10/93	

RLT S.O. RPM 1775 S.F. 1.15 ROTOR 418140-31-NE
 FRAME 324T VOLTS 230/460 NEMA DESIGN B TEST S.O. ---
 HP 40 AMPS 95.4/47.7 CODE LETTER G TEST DATE ---
 TYPE P DUTY CONT ENCLOSURE FCXE STATOR RES. @ 25 °C .0430/.172
 PHASE/HERTZ 3/60 AMB °C/INSUL 40/F E/S 489107 OHMS (BETWEEN LINES)



AMPERES SHOWN FOR 460 VOLT CONNECTION, IF OTHER VOLTAGE CONNECTIONS ARE AVAILABLE, THE AMPERES WILL VARY INVERSELY WITH THE RATED VOLTAGE.

BALDOR
 BALDOR • DOUGLASS • RELIANCE

DR. BY P.B. GREENE
 CK. BY K.W. KANDOLF
 APP. BY K.W. KANDOLF
 DATE 08/10/93

A-C MOTOR
PERFORMANCE W00189-A-A001
CURVES ISSUE DATE 08/10/93

Printed on 11/16/07 14:40 @ umghengdev1