



BALDOR® • *RELIANCE*

Product Information Packet

CHC144A

.25HP,1725RPM,1PH,60HZ,48Z,1712C,TEAO,F1

Product Detail							
Revision:	T	Status:	PRD/A	Change #:		Proprietary:	No
Type:	AC	Prod Type:	1712C	Elec. Spec:	17WGW029	CD Diagram:	CD0804
Enclosure	TEAO	Mfg Plant:		Mech Spec:	17K043	Layout:	17LYK043
Frame:	48Z	Mounting:	F1	Poles:	04	Created Date:	
Base:	RS	Rotation:	RS	Insulation:	B	Eff. Date:	10-20-2008
Leads:	7#18	Literature:		Elec. Diagram:		Replaced By:	

Nameplate NP1203A01							
CAT.NO.	CHC144A	ENCL			TEAO		
SPEC.	17K043W029	FRAME			48Z		
HP	.25						
VOLTS	115/230						
AMPS	3/1.5						
RPM	1725						
HZ	60	PH	1	CL	B		
SER.F.	1.00	DES	-	CODE	F		
FL EFF	66	PF					
RATING	40C AMB-CONT						
SF AMP				USABLE AT 208V	1.6		
SER.							
MANUAL	N	AUTO	Y	NONE	N		
BLANK							

Parts List			
Product ID	Description	Quantity	List Price
SA081987	SA 17K043W029	1.000	127.00
RA075325	RA 17K043W029	1.000	106.00
OC2005F01	OVL OIL CAP 5MFD/370V	1.000	19.00
TB0167A02	6 POS SHORT FOOT 300 SERIES (27-20 AWG)	1.000	5.00
WD1540A03	TERMINAL, 187 SERIES 300 SERIES MAG-MATE	4.000	2.00
WD1540A04	TERMINAL, 187 SERIES 300 SERIES MAG-MATE	2.000	2.00
WD4100A49	CAPLUG,BP-13/16,PLUG W/RECESSED HEAD	1.000	2.00
11XT0832G06	8-32 X 3/8 TY 23 TAP GRN. X	1.000	3.00
LD5000A52	LEAD ASSY W/INTERNAL STAR RING TERMINALS	1.000	5.00
11XT1032A06	10-32 X 3/8 HX WSHR HD SLTD TYPE 23	2.000	3.00
51XW0832A07	8-32 X .44, TAPTITE II, HEX WSHR SLTD SE	4.000	2.00
RM1000A03SP	CUSHION RING, MDL 17-33-34	1.000	7.00
HA6004A01A	CLAMP CUSHION RING ASSY	1.000	4.00
33CB4800A02	CAPACITOR COVER, STAMPED	1.000	3.00
35GS3001A02	GASKET, CA.COVER, 5.38 LONG .06 CS301	1.000	4.00
34GS5003	FOAM SLEEVE, ID = 2 1/16" X 3 3/8"	1.000	2.00
51XB1016A05	10-16X5/16HX WA SL SR TYB (F/S)	2.000	2.00
HW5100A03SP	WAVY WASHER (W1543-017)	1.000	2.00
17EP3100D01	PU ENDPLATE, MACH W/HUB ENCLOSED	1.000	17.00
XY0832A02	8-32 HEX NUT	4.000	2.00
RM1000A03SP	CUSHION RING, MDL 17-33-34	1.000	7.00
HA6004A01A	CLAMP CUSHION RING ASSY	1.000	4.00
34CB4501SP	TERMINAL BOX LID, STAMPED X (PLATED)	1.000	20.00
34GS1005	GASKET, TERM PLATE LID	1.000	2.00

Parts List (continued)			
Product ID	Description	Quantity	List Price
51XW0832A07	8-32 X .44, TAPTITE II, HEX WSHR SLTD SE	2.000	2.00
17EP3200DT01	FR ENDPLATE, MACH W/HUB	1.000	17.00
SP5126	MDL 17L TERM PANEL 3 PH W/TABS & 3/4 THE	1.000	26.00
34BA4001A01A	RESILIENT BASE, 408-416 AUTOPHORETIC	1.000	56.00
HA3169A23	THRUBOLT #8-32 THDS X 8.44 LONG	4.000	2.00
LB1125C01	STD (STOCK) CARTON LABEL BALDOR WITH FLA	1.000	2.00
LB5040	INSTRUCTION TAG, AC & DC	1.000	2.00
NP1203A01	NP LABEL 1PH, DV, REV (FOR COMMERCIAL MO	1.000	
34PA1002	PACKING GROUP, BALDOR	1.000	13.00
LD53517	LEAD ASSY. MAG MATE	1.000	30.00
LD5000A102	LEAD ASSY, 16 GA, RED, #8, W/FLAG TERMS	1.000	2.00

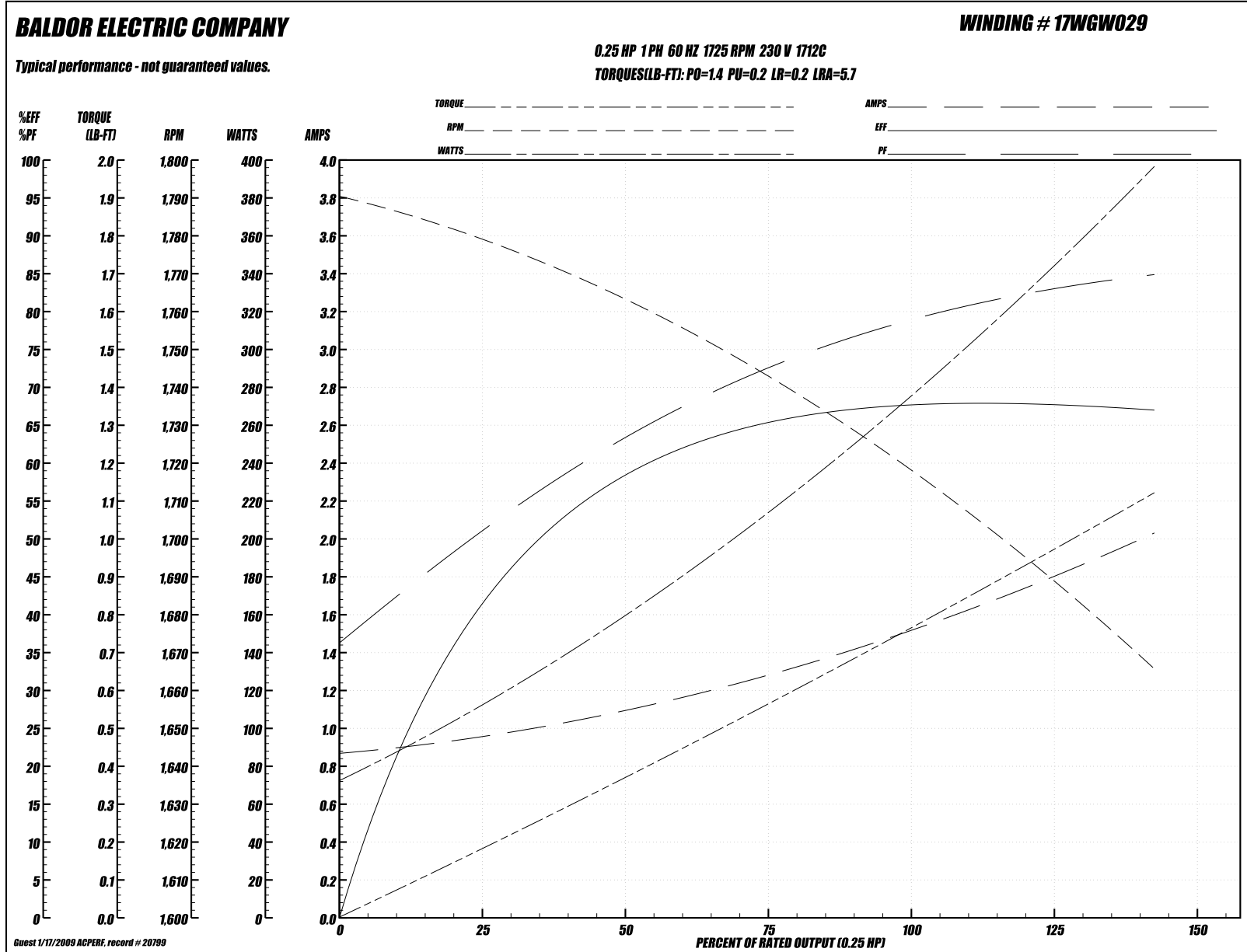
Performance Data at 230V, 60Hz, 0.25HP (Typical performance - Not guaranteed values)
General Characteristics

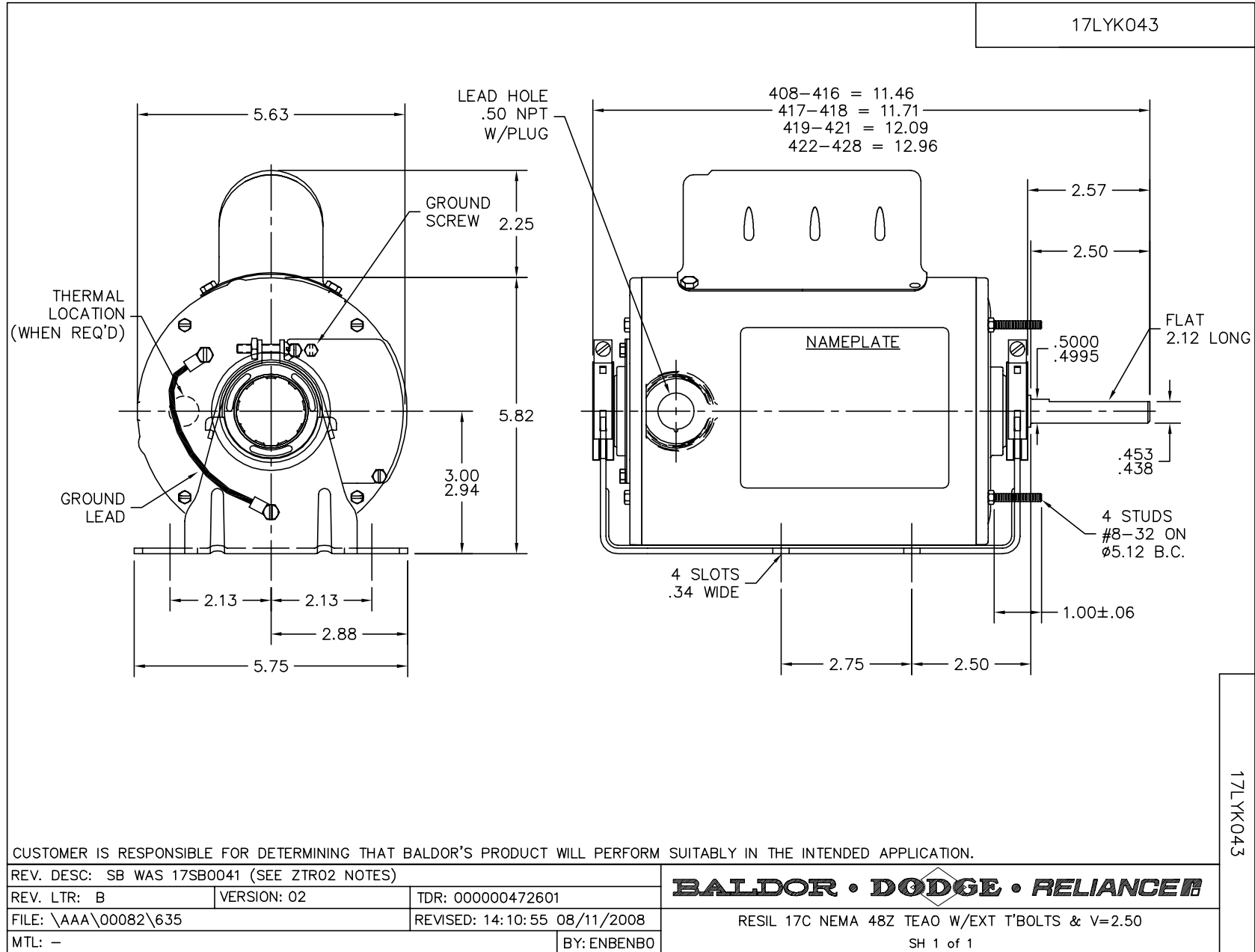
Full Load Torque:	0.75 LB-FT	Start Configuration:	DOL
No-Load Current:	0.86 Amps	Break-Down Torque:	1.4 LB-FT
Line-line Res. @ 25°C.:	14.7 Ohms A Ph / 39.5 Ohms B Ph	Pull-Up Torque:	0.2 LB-FT
Temp. Rise @ Rated Load:	38°C	Locked-Rotor Torque:	0.2 LB-FT
Temp. Rise @ S.F. Load:	0°C	Starting Current:	5.7 Amps

Load Characteristics

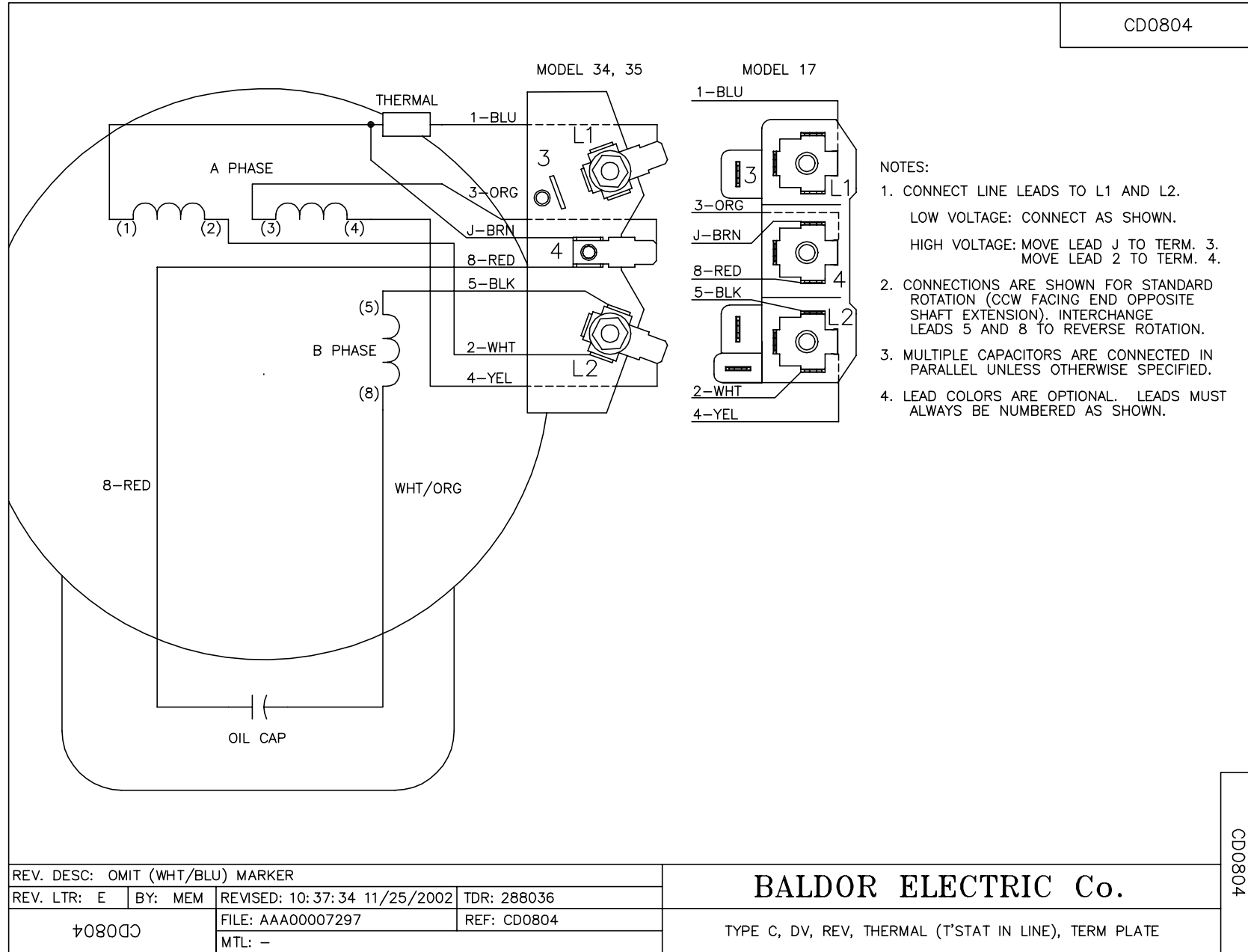
% of Rated Load:	25	50	75	100	125	150	S.F.
Power Factor:	52.0	65.0	73.0	79.0	83.0	85.0	0.0
Efficiency:	41.3	58.3	65.4	67.9	68.1	66.8	0.0
Speed:	1778.0	1760.0	1744.0	1721.0	1697.0	1663.0	0.0
Line Amperes:	0.96	1.12	1.27	1.5	1.73	2.05	0.0

Performance Graph at 230V, 60Hz, 0.25HP (Typical performance - Not guaranteed values)





CD0804



REV. DESC: OMIT (WHT/BLU) MARKER			
REV. LTR: E	BY: MEM	REVISED: 10: 37: 34 11/25/2002	TDR: 288036
FILE: AAA00007297		REF: CD0804	
MTL: -			

BALDOR ELECTRIC Co.

TYPE C, DV, REV, THERMAL (T'STAT IN LINE), TERM PLATE

CD0804