



# **BALDOR® • *RELIANCE***

## **Product Information Packet**

# **CL3403**

## **11L 4P TEFC HOR 56C**

Product Detail									
Revision:	L	Status:	PRD/A	Change #:		Proprietary:	No		
Type:	AC	Prod Type:	3411L	Elec. Spec:	34WG5506	CD Diagram:	CD0001		
Enclosure	TEFC	Mfg Plant:		Mech Spec:	34C062	Layout:	34LYC062		
Frame:	56C	Mounting:	F1	Poles:	04	Created Date:			
Base:	RG	Rotation:	R	Insulation:	B	Eff. Date:	12-12-2008		
Leads:	6#18	Literature:		Elec. Diagram:		Replaced By:			
Nameplate NP1256L									
CAT.NO.	CL3403								
SPEC.	34C62-5506								
HP	.25								
VOLTS	115/230								
AMP	5/2.5								
RPM	1725								
FRAME	56C	HZ	60	PH	1				
SER.F.	1.35	CODE	L	DES	N	CLASS	B		
NEMA-NOM-EFF	55	PF	57						
RATING	40C AMB-CONT								
CC		USABLE AT 208V	3						
DE	6203	ODE	6203						
ENCL	TEFC	SN							
	SFA 5.6/2.8								

<b>Parts List</b>			
<b>Product ID</b>	<b>Description</b>	<b>Quantity</b>	<b>List Price</b>
SA166349	SA 34C62-5506	1.000	167.00
RA154729	RA 34C62-5506	1.000	140.00
EC1161A02	BMI 091A161B125AD2A ELEC CAP 115V 1.4 X	1.000	14.00
NS2512A01	INSULATOR, CONDUIT BOX X X	1.000	2.00
34CB3002A	CB CAST W/.88 DIA HOLE	1.000	13.00
34GS1029A01	GASKET, CONDUIT BOX	1.000	2.00
51XB1016A07	10-16 X 7/16 HXWSSLD SERTYB	2.000	2.00
11XW1032G06	10-32 X .38, TAPTITE II, HEX WSHR SLTD U	1.000	3.00
51XW0832A07	8-32 X .44, TAPTITE II, HEX WSHR SLTD SE	2.000	2.00
34EP3102A01SP	FR ENDPLATE, MACH	1.000	68.00
NS2500A01	INSULATOR, AUTO THER PROT	1.000	2.00
34CB4800SP	CAPACITOR COVER, STAMPED X X	1.000	20.00
34GS3000SP	GASKET, CAPACITOR BOX X X	1.000	3.00
51XB1016A05	10-16X5/16HX WA SL SR TYB (F/S)	2.000	2.00
WD1000A03	41531 AMP FLG.TERM(4M/RL)1 MILLION PER Y	1.000	2.00
HW5100A03SP	WAVY WASHER (W1543-017)	1.000	2.00
34EP3300A24SP	PU ENDPLATE, MACH	1.000	63.00
51XN1032A20	10-32 X 1 1/4 HX WS SL SR	2.000	2.00
34FN3002A01SP	EXTERNAL FAN, PLASTIC, .637/.639 HUB W/	1.000	14.00
34FH4002A01SP	IEC FH NO GREASER	1.000	23.00
51XW1032A06	10-32 X .38, TAPTITE II, HEX WSHR SLTD S	3.000	3.00
34CB4517	CB LID 4 MTG HOLES .22 DIA STAMPED, FOR	1.000	5.00
34GS1031A01	GASKET, FLAT CONDUIT BOX LID (LEXIDE)	1.000	2.00
51XW0832A07	8-32 X .44, TAPTITE II, HEX WSHR SLTD SE	4.000	2.00

<b>Parts List (continued)</b>			
<b>Product ID</b>	<b>Description</b>	<b>Quantity</b>	<b>List Price</b>
HW2501D13SP	KEY, 3/16 SQ X 1.375	1.000	2.00
HA7000A04	KEY RETAINER 0.625 DIA SHAFTS	1.000	2.00
MG1000G27	PAINT- S9282E CHARCOAL GREY	0.014	4,000.00
10XF0440S02	04-40 X 1/8 TYPE F HEX HD STAINLESS STIC	2.000	2.00
SP5056A24	MODEL 34 TYPE L STATIONARY SWITCH WITH L	1.000	18.00
HA3100A12	THRUBOLT 10-32 X 7.375	4.000	2.00
LB5040	INSTRUCTION TAG, AC & DC	1.000	2.00
LB1125C01	STD (STOCK) CARTON LABEL BALDOR WITH FLA	1.000	2.00
LC0001A01	CONN LABEL / WARNING LABEL (LC0001 / LB1	1.000	2.00
NP1256L	NP STD LASER ENGRAVED, UL CSA CC, W/O TH	1.000	3.00
34PA1002	PACKING GROUP, BALDOR	1.000	13.00

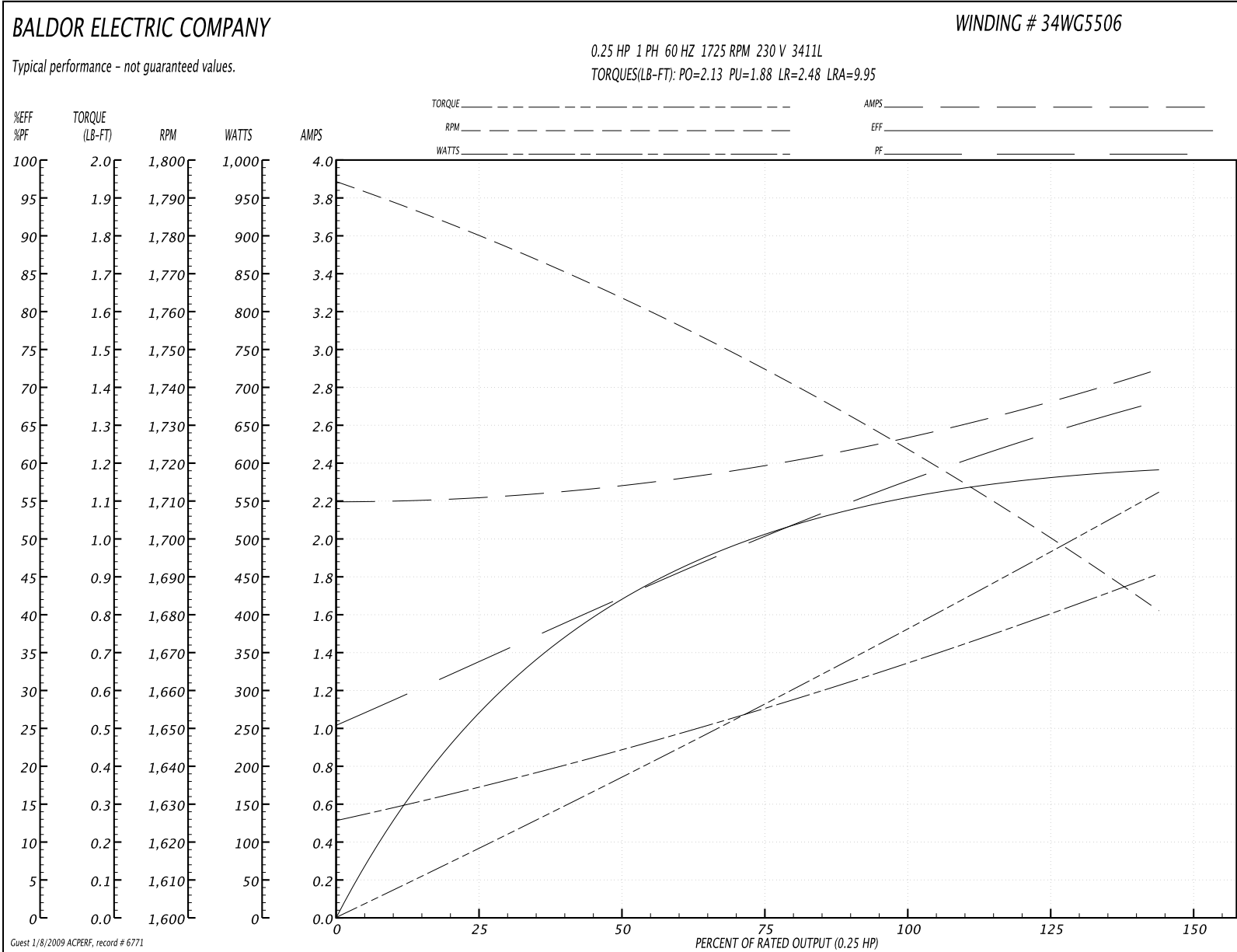
**Performance Data at 230V, 60Hz, 0.25HP (Typical performance - Not guaranteed values)**
**General Characteristics**

<b>Full Load Torque:</b>	0.75 LB-FT	<b>Start Configuration:</b>	DOL
<b>No-Load Current:</b>	2.2 Amps	<b>Break-Down Torque:</b>	2.13 LB-FT
<b>Line-line Res. @ 25°C.:</b>	8.88 Ohms A Ph / 7.06 Ohms B Ph	<b>Pull-Up Torque:</b>	1.88 LB-FT
<b>Temp. Rise @ Rated Load:</b>	42°C	<b>Locked-Rotor Torque:</b>	2.48 LB-FT
<b>Temp. Rise @ S.F. Load:</b>	50°C	<b>Starting Current:</b>	9.95 Amps

**Load Characteristics**

<b>% of Rated Load:</b>	<b>25</b>	<b>50</b>	<b>75</b>	<b>100</b>	<b>125</b>	<b>150</b>	<b>S.F.</b>
<b>Power Factor:</b>	31.0	40.0	49.0	57.0	63.0	69.0	67.0
<b>Efficiency:</b>	27.0	42.0	51.0	55.0	58.0	59.0	59.0
<b>Speed:</b>	1779.0	1763.0	1745.0	1725.0	1705.0	1680.0	1690.0
<b>Line Amperes:</b>	2.2	2.3	2.4	2.5	2.7	2.9	2.8

Performance Graph at 230V, 60Hz, 0.25HP (Typical performance - Not guaranteed values)



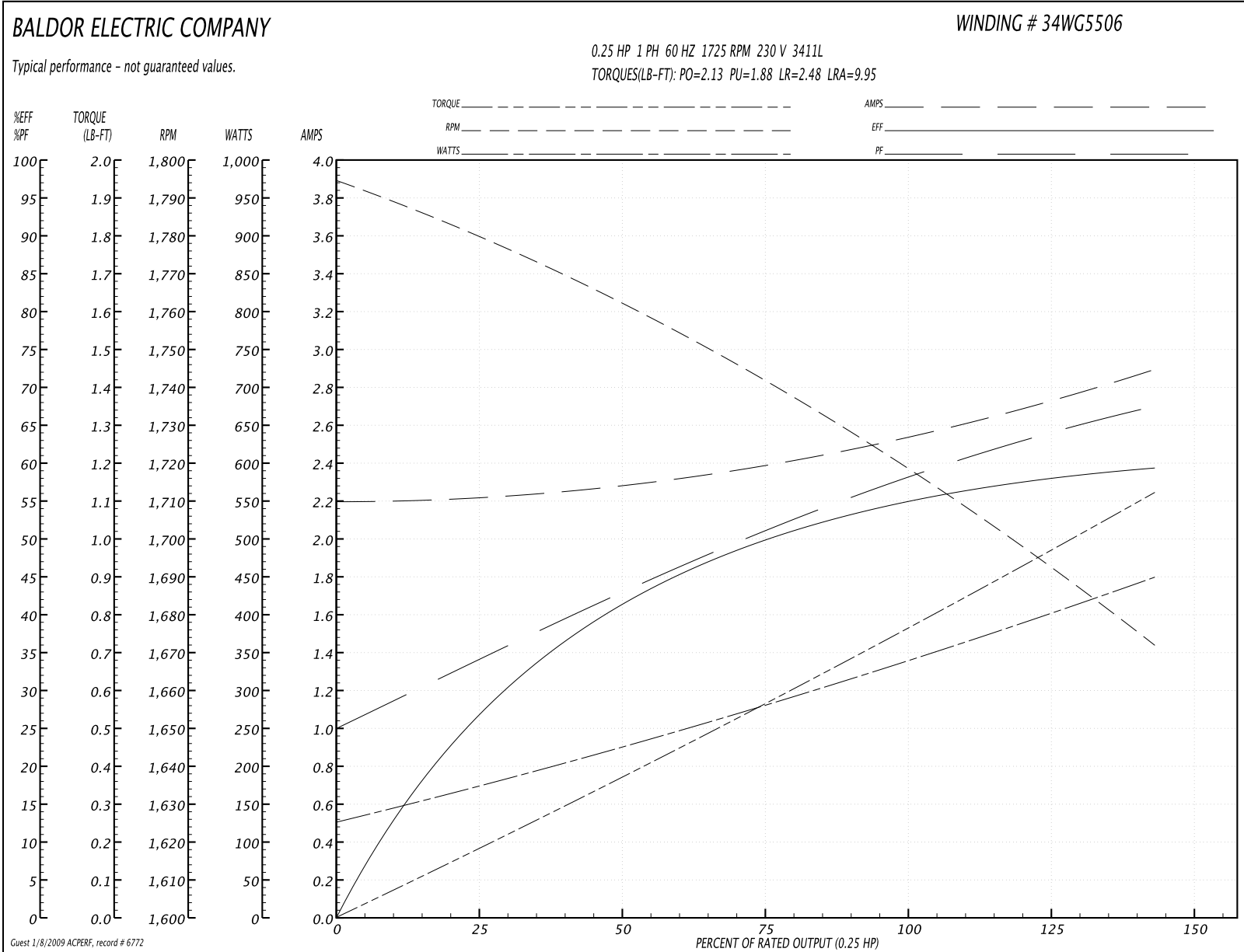
**Performance Data at 230V, 60Hz, 0.25HP (Typical performance - Not guaranteed values)**
**General Characteristics**

<b>Full Load Torque:</b>	0.75 LB-FT	<b>Start Configuration:</b>	DOL
<b>No-Load Current:</b>	2.2 Amps	<b>Break-Down Torque:</b>	2.13 LB-FT
<b>Line-line Res. @ 25°C.:</b>	8.88 Ohms A Ph / 7.06 Ohms B Ph	<b>Pull-Up Torque:</b>	1.88 LB-FT
<b>Temp. Rise @ Rated Load:</b>	57°C	<b>Locked-Rotor Torque:</b>	2.48 LB-FT
<b>Temp. Rise @ S.F. Load:</b>	70°C	<b>Starting Current:</b>	9.95 Amps

**Load Characteristics**

<b>% of Rated Load:</b>	<b>25</b>	<b>50</b>	<b>75</b>	<b>100</b>	<b>125</b>	<b>150</b>	<b>S.F.</b>
<b>Power Factor:</b>	32.0	40.0	49.0	57.0	63.0	69.0	67.0
<b>Efficiency:</b>	28.0	40.0	50.0	55.0	58.0	59.0	59.0
<b>Speed:</b>	1779.0	1763.0	1740.0	1720.0	1700.0	1670.0	1680.0
<b>Line Amperes:</b>	2.2	2.3	2.4	2.5	2.7	2.9	2.8

Performance Graph at 230V, 60Hz, 0.25HP (Typical performance - Not guaranteed values)



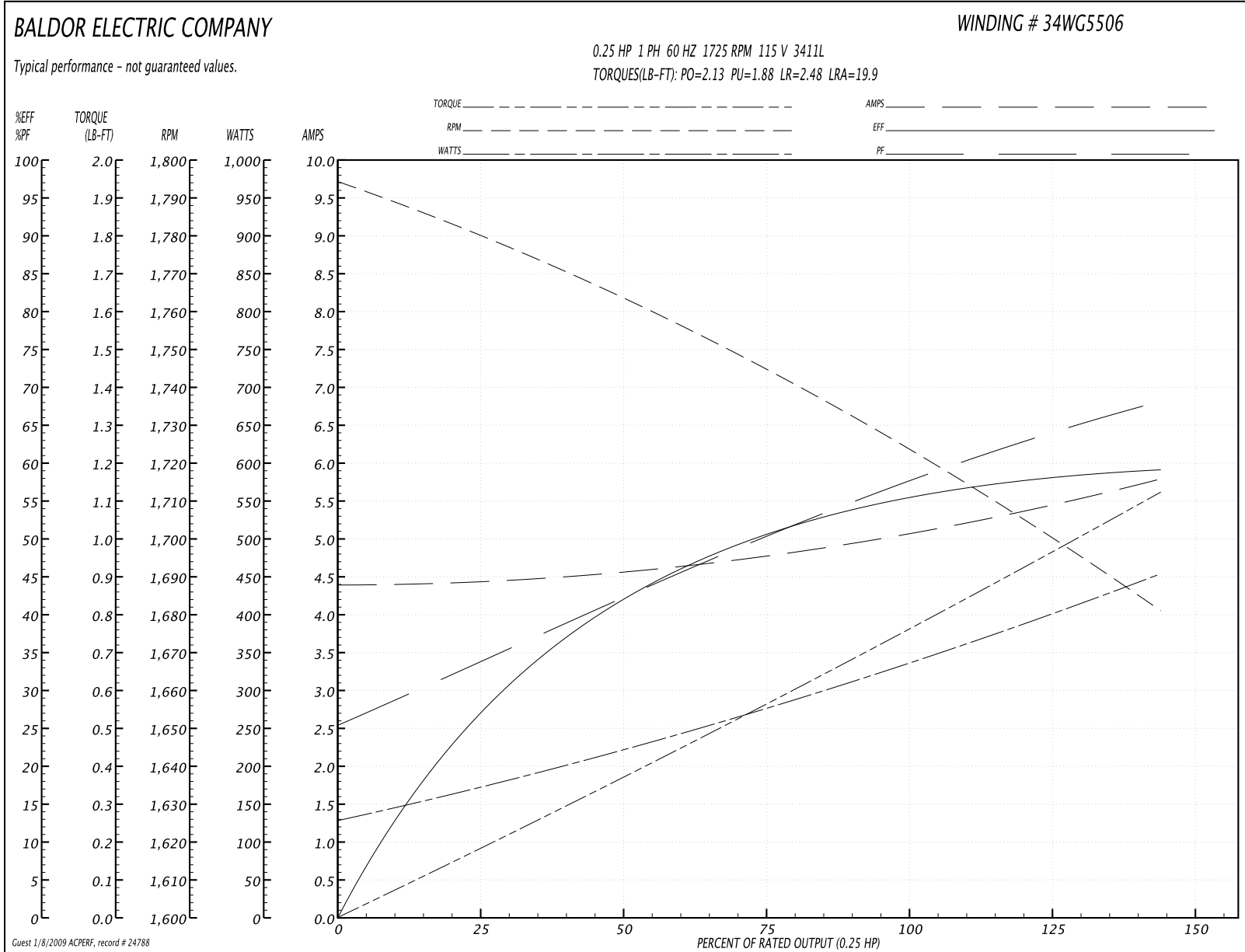
**Performance Data at 115V, 60Hz, 0.25HP (Typical performance - Not guaranteed values)**
**General Characteristics**

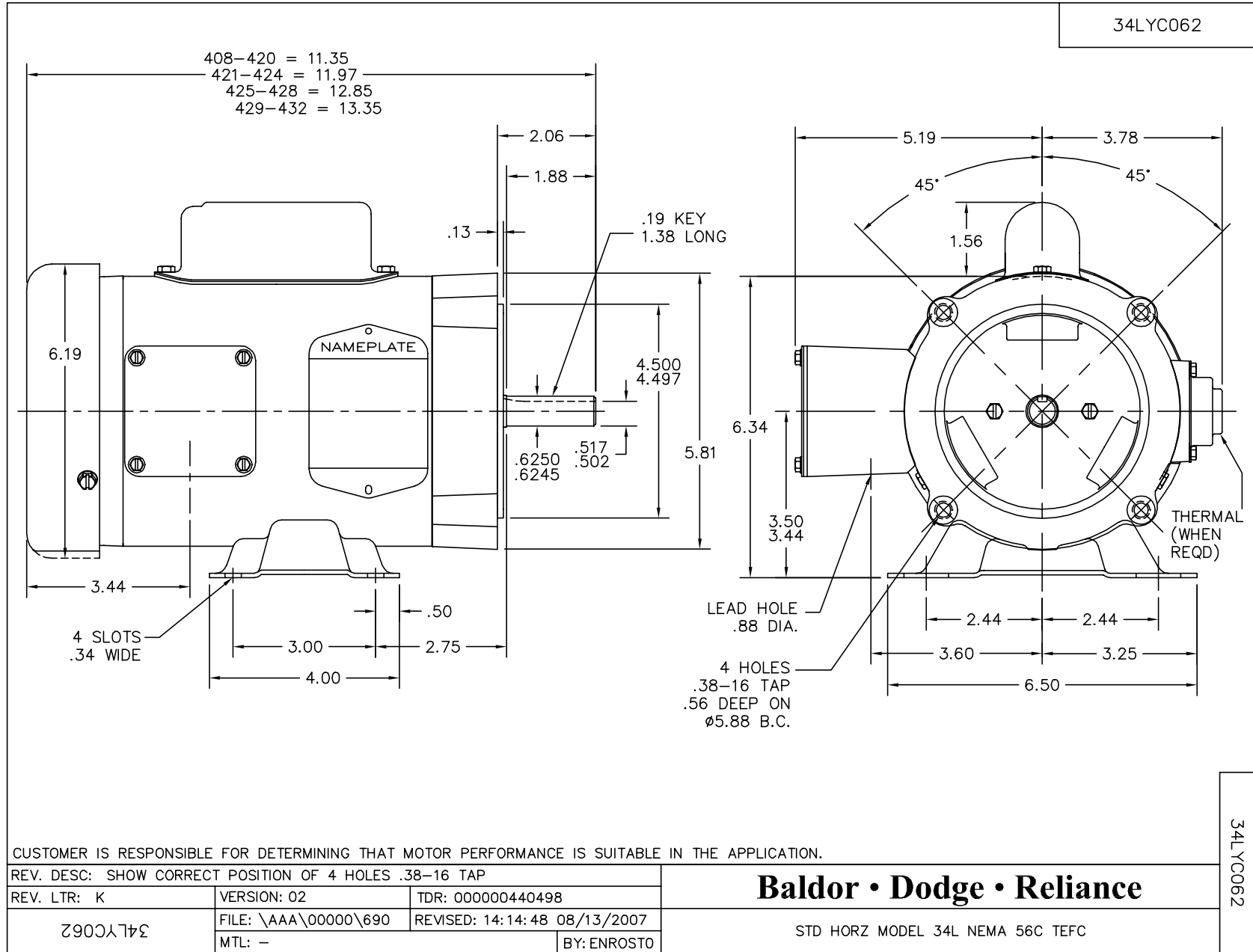
<b>Full Load Torque:</b>	0.75 LB-FT	<b>Start Configuration:</b>	DOL
<b>No-Load Current:</b>	4.4 Amps	<b>Break-Down Torque:</b>	2.13 LB-FT
<b>Line-line Res. @ 25°C.:</b>	2.22 Ohms A Ph / 7.06 Ohms B Ph	<b>Pull-Up Torque:</b>	1.88 LB-FT
<b>Temp. Rise @ Rated Load:</b>	42°C	<b>Locked-Rotor Torque:</b>	2.48 LB-FT
<b>Temp. Rise @ S.F. Load:</b>	50°C	<b>Starting Current:</b>	19.9 Amps

**Load Characteristics**

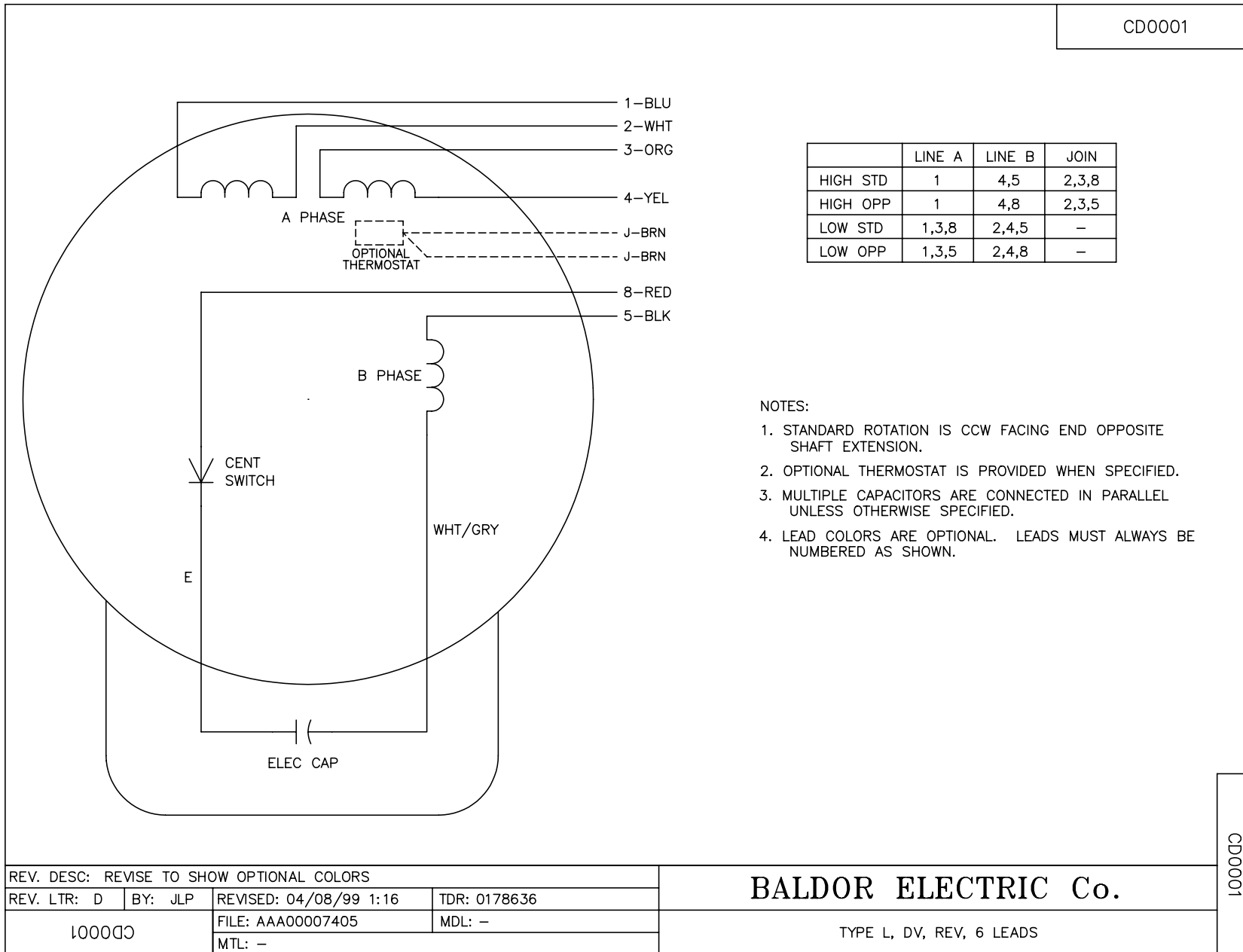
<b>% of Rated Load:</b>	<b>25</b>	<b>50</b>	<b>75</b>	<b>100</b>	<b>125</b>	<b>150</b>	<b>S.F.</b>
<b>Power Factor:</b>	31.0	40.0	49.0	57.0	63.0	69.0	67.0
<b>Efficiency:</b>	27.0	42.0	51.0	55.0	58.0	59.0	59.0
<b>Speed:</b>	1779.0	1763.0	1745.0	1725.0	1705.0	1680.0	1690.0
<b>Line Amperes:</b>	4.4	4.6	4.8	5.0	5.4	5.8	5.6

Performance Graph at 115V, 60Hz, 0.25HP (Typical performance - Not guaranteed values)





CD0001



NOTES:

1. STANDARD ROTATION IS CCW FACING END OPPOSITE SHAFT EXTENSION.
2. OPTIONAL THERMOSTAT IS PROVIDED WHEN SPECIFIED.
3. MULTIPLE CAPACITORS ARE CONNECTED IN PARALLEL UNLESS OTHERWISE SPECIFIED.
4. LEAD COLORS ARE OPTIONAL. LEADS MUST ALWAYS BE NUMBERED AS SHOWN.

REV. DESC: REVISE TO SHOW OPTIONAL COLORS			
REV. LTR: D	BY: JLP	REVISED: 04/08/99 1:16	TDR: 0178636
100000		FILE: AAA00007405	MDL: -
		MTL: -	

**BALDOR ELECTRIC Co.**

TYPE L, DV, REV, 6 LEADS

CD0001