



# **BALDOR® • *RELIANCE***

## **Product Information Packet**

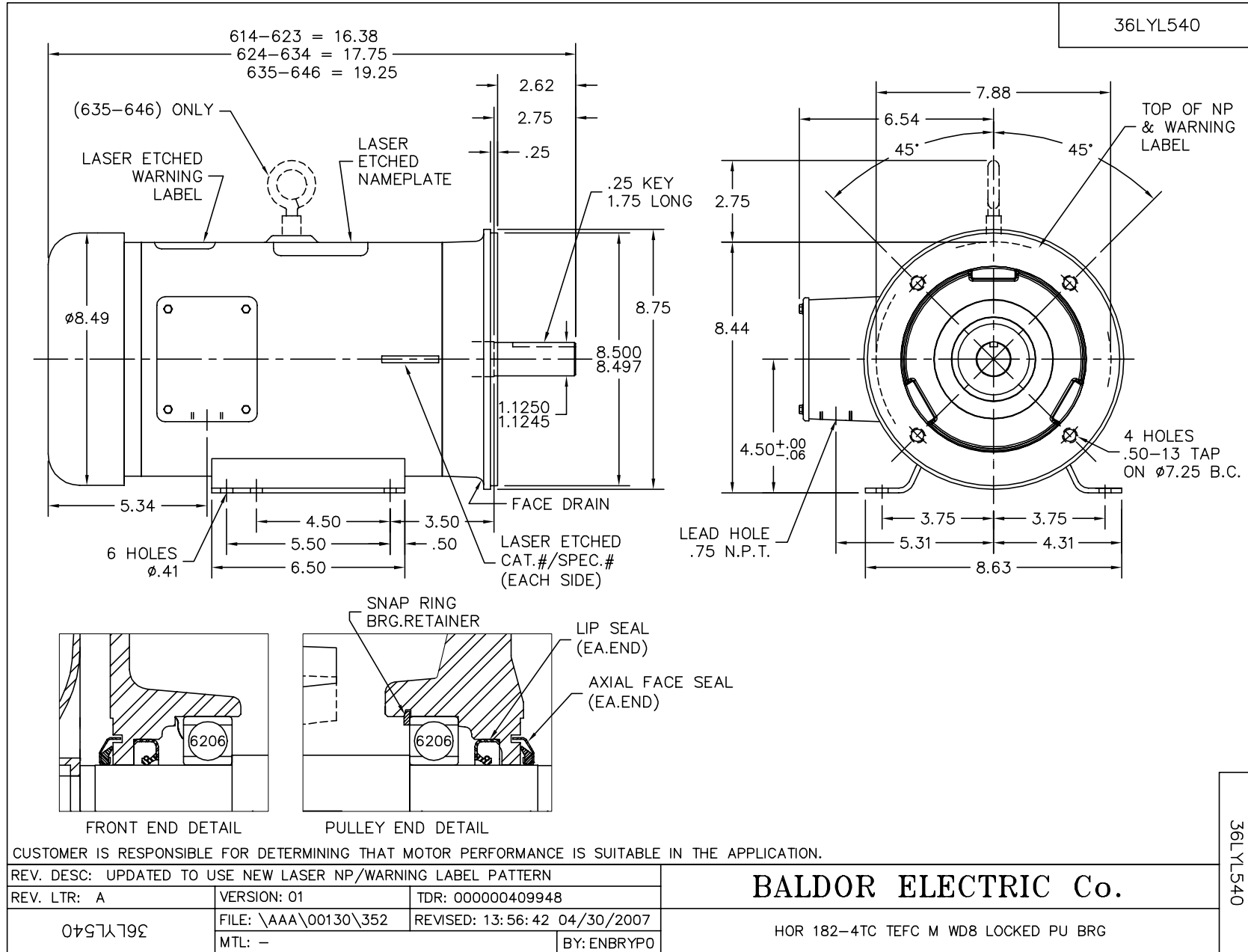
### **CSSEWDM3613T**

**5HP,3500RPM,3PH,60HZ,184TC,3634M,TEFC,F1**

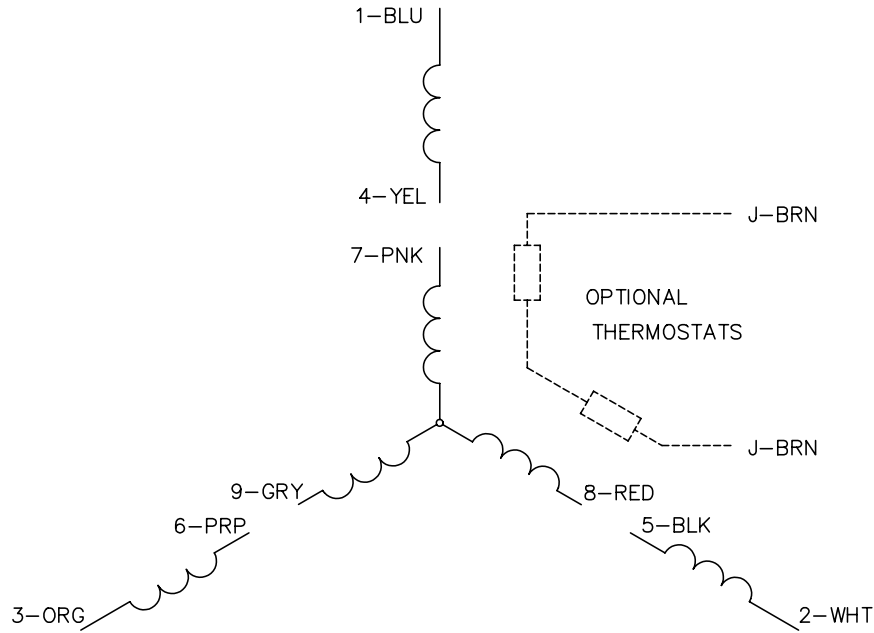
Product Detail							
<b>Revision:</b>	J	<b>Status:</b>	PRD/A	<b>Change #:</b>		<b>Proprietary:</b>	No
<b>Type:</b>	AC	<b>Prod Type:</b>	3634M	<b>Elec. Spec:</b>	36WGT149	<b>CD Diagram:</b>	CD0005
<b>Enclosure</b>	TEFC	<b>Mfg Plant:</b>		<b>Mech Spec:</b>	36L540	<b>Layout:</b>	36LYL540
<b>Frame:</b>	184TC	<b>Mounting:</b>	F1	<b>Poles:</b>	02	<b>Created Date:</b>	03-10-2006
<b>Base:</b>	RG	<b>Rotation:</b>	R	<b>Insulation:</b>	H	<b>Eff. Date:</b>	10-24-2008
<b>Leads:</b>	9#16	<b>Literature:</b>		<b>Elec. Diagram:</b>		<b>Replaced By:</b>	

<b>Parts List</b>			
<b>Product ID</b>	<b>Description</b>	<b>Quantity</b>	<b>List Price</b>
SA140171	SA 36L540T149G1	1.000	1,127.00
RA129597	RA 36L540T149G1	1.000	940.00
36FN3000C01SP	FAN EXTERNAL,PLASTIC, 5.25 OD, .912/.907	1.000	15.00
11XW1032G06	10-32 X .38, TAPTITE II, HEX WSHR SLTD U	1.000	3.00
HW3001A01	D3019 BRASS WASHER(STIMP)	1.000	2.00
36FE1912A01	FREP TEFC 206 BRG (STAINLESS)	1.000	1,089.00
HW4510A01	MEMBRANE VENT (DRAIN) W/O-RING (GORE)	1.000	43.00
HW4600F25	AXIAL FACE SEAL AFX-30 304SS/V107 SS CAS	1.000	65.00
RM1070A42	O-RING,(#70-7.239) VITON .070X7.239	1.000	48.00
HW5100A06	W2420-025 WVY WSHR (WB)	1.000	2.00
36PE1913A01	PUEP 182-4TC ENCL 206 BRG (STAINLESS)	1.000	1,947.00
RM1070A42	O-RING,(#70-7.239) VITON .070X7.239	1.000	48.00
HW4600F25	AXIAL FACE SEAL AFX-30 304SS/V107 SS CAS	1.000	65.00
51XB1214A16	12-14X1.00 HXWSSLD SERTYB	1.000	2.00
36FH4007	FAN COVER #304 STAINLESS W/OUT GREASER	1.000	35.00
10XN1032S06	HEX HD CAP SCREW, SS	3.000	2.00
RM1070A14	O-RING, -010 VITON, .250 ID, .070 C.S.	4.000	2.00
36CB4517	36 LIPPED CB LID #304 STAINLESS STEEL	1.000	10.00
37GS3010SP	1/16"WHITE LID GASKET	1.000	2.00
59XN0832S07	8/32 X 7/16 HX WS HD SER X	4.000	2.00
HW2502E16	SS KEY 1/4 X 1.750 X	1.000	4.00
HA7000A02	KEY RETAINER RING, 1 1/8 DIA, 1 3/8 DIA	1.000	2.00
MJ5001A01	46-665 RED SEALER	0.005	57.00
MJ1000A02	GREASE, POLYREX EM EXXON	0.050	10.00

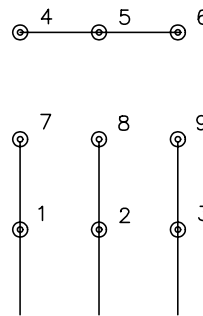
<b>Parts List (continued)</b>			
<b>Product ID</b>	<b>Description</b>	<b>Quantity</b>	<b>List Price</b>
WD4006A07	WIRE JOINT,SILICONE FILLED FOR WATERTIGH	6.000	11.00
HA3101S42	THRUBOLT-1/4-20 X11.50 SSTDR#94334	4.000	14.00
LB1125C02	SUPER-E (STOCK CTN LABEL SUPER-E WITH FL	1.000	2.00
LB1357	ENERGY GUIDE LABEL (BOX LABEL)	1.000	2.00
GOPA1000	PACKAGING GROUP	1.000	38.00



CD0005

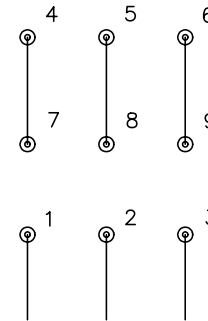


LOW VOLTAGE  
(2Y)



LINE

HIGH VOLTAGE  
(1Y)



LINE

NOTES:

1. INTERCHANGE ANY TWO LINE LEADS TO REVERSE ROTATION.
2. OPTIONAL THERMOSTATS ARE PROVIDED WHEN SPECIFIED.
3. ACTUAL NUMBER OF INTERNAL PARALLEL CIRCUITS MAY BE A MULTIPLE OF THOSE SHOWN ABOVE.
4. LEAD COLORS ARE OPTIONAL. LEADS MUST ALWAYS BE NUMBERED AS SHOWN.

REV. DESC: REVISE TO SHOW OPTIONAL COLORS			
REV. LTR: E	BY: JLP	REVISED: 01/19/99 10:15	TDR: 0171435
900000		FILE: AAA00005140	MDL: -
		MTL: -	

**BALDOR ELECTRIC Co.**

3PH, DV, 9 LEADS

CD0005