



BALDOR® • *RELIANCE*

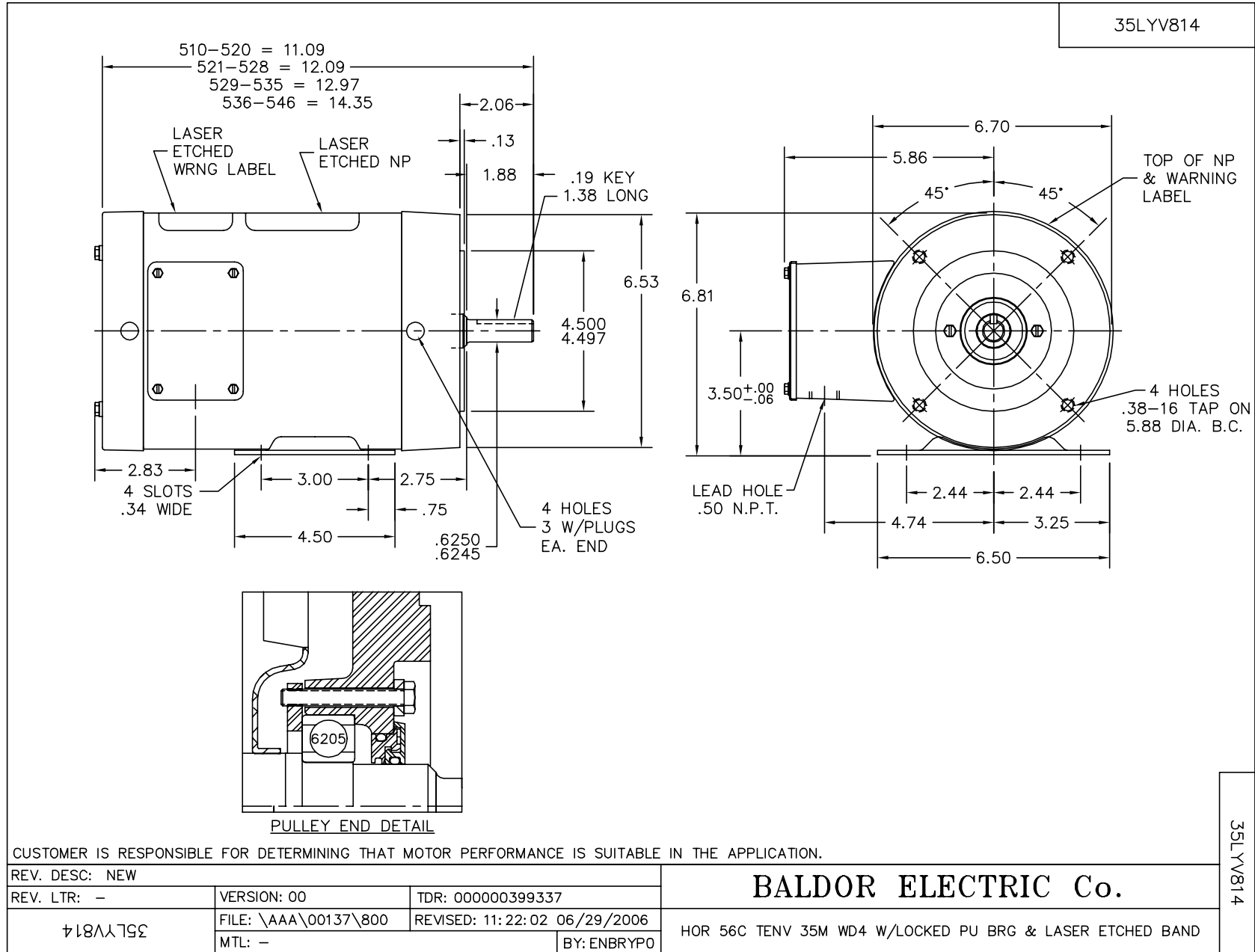
Product Information Packet

CSSWDM3545

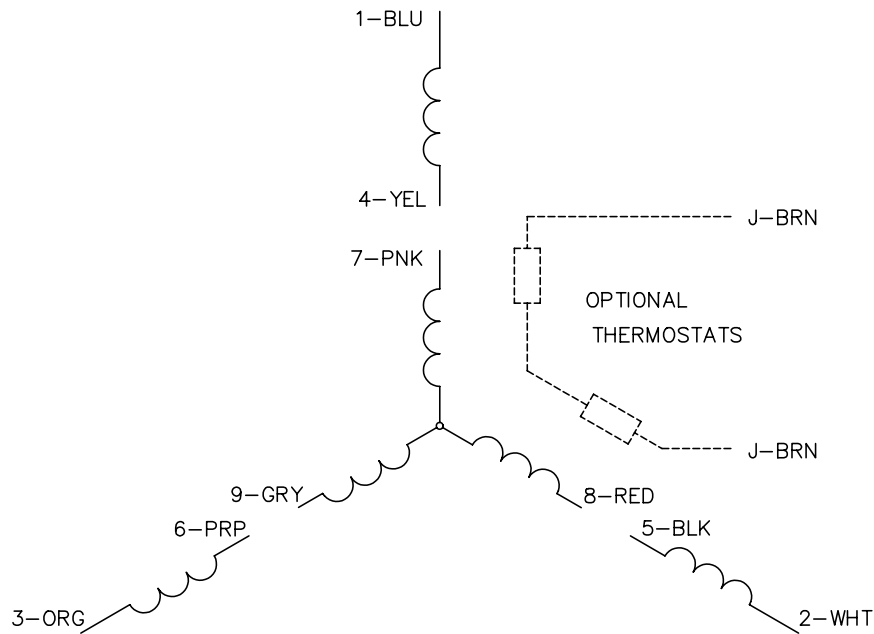
1HP,3450RPM,3PH,60HZ,56C,3516M,TENV,F1,N

| Product Detail | | | | | | | |
|------------------|------|--------------------|-------|-----------------------|----------|----------------------|------------|
| Revision: | G | Status: | PRD/A | Change #: | | Proprietary: | No |
| Type: | AC | Prod Type: | 3516M | Elec. Spec: | 35WGR933 | CD Diagram: | CD0005 |
| Enclosure | TENV | Mfg Plant: | | Mech Spec: | 35V814 | Layout: | 35LYV814 |
| Frame: | 56C | Mounting: | F1 | Poles: | 02 | Created Date: | 06-22-2007 |
| Base: | RG | Rotation: | R | Insulation: | F | Eff. Date: | 12-15-2008 |
| Leads: | 9#18 | Literature: | | Elec. Diagram: | | Replaced By: | |

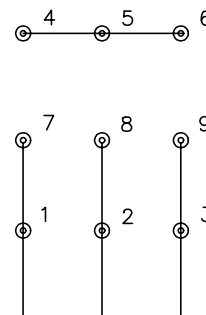
| Parts List | | | |
|-------------------|--|-----------------|-------------------|
| Product ID | Description | Quantity | List Price |
| SA145403 | SA 35V814R933 | 1.000 | 653.00 |
| RA134552 | RA 35V814R933 | 1.000 | 545.00 |
| NS2512A01 | INSULATOR, CONDUIT BOX X X | 1.000 | 2.00 |
| 35CB5001A08 | CONDUIT BOX KIT, S/P 9-2 (ALL STAINLESS) | 1.000 | 175.00 |
| 11XW1032G06 | 10-32 X .38, TAPTITE II, HEX WSHR SLTD U | 1.000 | 3.00 |
| HW3001A01 | D3019 BRASS WASHER(STIMP) | 1.000 | 2.00 |
| 35FE1913A01 | FR ENDPLATE ASSY | 1.000 | 588.00 |
| HW5100A03SP | WAVY WASHER (W1543-017) | 1.000 | 2.00 |
| 35PE1914A02 | PU EP ASSY. FOR LOCKED BRG | 1.000 | 607.00 |
| HW4606A02 | JM CLIPPER/SEAL (LWE-0938-1624-AL23) | 1.000 | 46.00 |
| 12XN1032S22 | 10-32 X 1 3/8 SLOT HEX, STAINLESS STEEL | 2.000 | 3.00 |
| HA1049A01 | DUBO LOK WASHER SIZE 10 (NYLON LOCK SEAL | 2.000 | 2.00 |
| HA1049A01 | DUBO LOK WASHER SIZE 10 (NYLON LOCK SEAL | 4.000 | 2.00 |
| HW2502D13 | SS KEY, 3/16 SQ X 1.375 | 1.000 | 2.00 |
| HA7000A04 | KEY RETAINER 0.625 DIA SHAFTS | 1.000 | 2.00 |
| MJ5001A02 | 732 CL SEALANT 3 OZ DIXIE BEARING 289100 | 0.001 | 23.00 |
| MJ1000A02 | GREASE, POLYREX EM EXXON | 0.050 | 10.00 |
| HA3100S45 | THRU BOLT HEX-HEAD 7.95 10-32 | 4.000 | 4.00 |
| LB1125C01 | STD (STOCK) CARTON LABEL BALDOR WITH FLA | 1.000 | 2.00 |
| PA1000 | PACKING GROUP 3500 SHORT | 1.000 | 8.00 |



CD0005

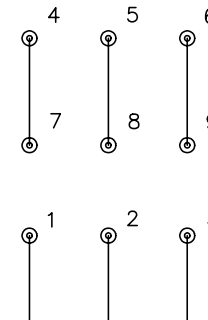


LOW VOLTAGE
(2Y)



LINE

HIGH VOLTAGE
(1Y)



LINE

NOTES:

1. INTERCHANGE ANY TWO LINE LEADS TO REVERSE ROTATION.
2. OPTIONAL THERMOSTATS ARE PROVIDED WHEN SPECIFIED.
3. ACTUAL NUMBER OF INTERNAL PARALLEL CIRCUITS MAY BE A MULTIPLE OF THOSE SHOWN ABOVE.
4. LEAD COLORS ARE OPTIONAL. LEADS MUST ALWAYS BE NUMBERED AS SHOWN.

| | | | |
|---|---------|-------------------------|--------------|
| REV. DESC: REVISE TO SHOW OPTIONAL COLORS | | | |
| REV. LTR: E | BY: JLP | REVISED: 01/19/99 10:15 | TDR: 0171435 |
| 900000 | | FILE: AAA00005140 | MDL: - |
| | | MTL: - | |

BALDOR ELECTRIC Co.

3PH, DV, 9 LEADS

CD0005