



BALDOR® • *RELIANCE*

Product Information Packet

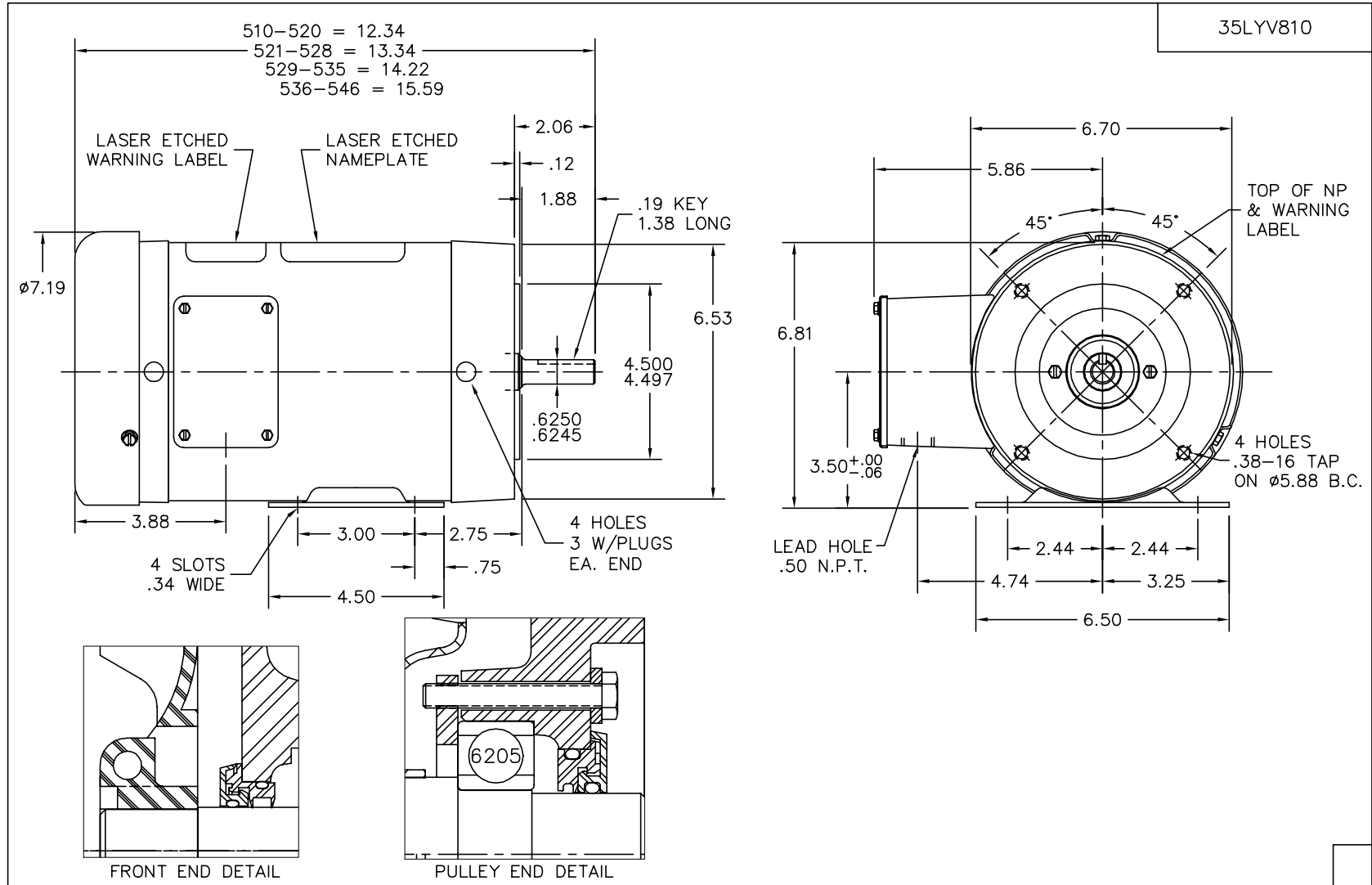
CSSWDM3558

2HP,1725RPM,3PH,60HZ,56C,3528M,TEFC,F1,N

Product Detail							
Revision:	-	Status:	PRD/A	Change #:		Proprietary:	No
Type:	AC	Prod Type:	3528M	Elec. Spec:	35WGR947	CD Diagram:	CD0005
Enclosure	TEFC	Mfg Plant:		Mech Spec:	35V810	Layout:	35LYV810
Frame:	56C	Mounting:	F1	Poles:	04	Created Date:	06-22-2006
Base:	RG	Rotation:	R	Insulation:	F	Eff. Date:	09-09-2006
Leads:	9#18	Literature:		Elec. Diagram:		Replaced By:	

Parts List			
Product ID	Description	Quantity	List Price
SA145400	SA 35V810R947H1	1.000	817.00
RA134549	RA 35V810R947H1	1.000	681.00
NS2512A01	INSULATOR, CONDUIT BOX X X	1.000	2.00
35CB5001A08	CONDUIT BOX KIT, S/P 9-2 (ALL STAINLESS)	1.000	175.00
11XW1032G06	10-32 X .38, TAPTITE II, HEX WSHR SLTD U	1.000	3.00
HW3001A01	D3019 BRASS WASHER(STIMP)	1.000	2.00
35EP1913A02	FR EP MADE FROM 35EP1913A01	1.000	398.00
HW4500A33	1/8 NPT STAINLESS,HOLO-KROME #13002,PRES	3.000	3.00
HW4606A01	JM CLIPPER/SEAL (WDE-0667-1064-BH49)	1.000	45.00
HW5100A03SP	WAVY WASHER (W1543-017)	1.000	2.00
35PE1914A02	PU EP ASSY. FOR LOCKED BRG	1.000	607.00
HW4606A02	JM CLIPPER/SEAL (LWE-0938-1624-AL23)	1.000	46.00
12XN1032S22	10-32 X 1 3/8 SLOT HEX, STAINLESS STEEL	2.000	3.00
HA1049A01	DUBO LOK WASHER SIZE 10 (NYLON LOCK SEAL	2.000	2.00
HA1049A01	DUBO LOK WASHER SIZE 10 (NYLON LOCK SEAL	4.000	2.00
51XB1214A16	12-14X1.00 HXWSSLD SERTYB	1.000	2.00
35FH4005A39	IEC FH NO GREASER (#304 SS)CLEAN ONLY	1.000	35.00
10XN1032S06	HEX HD CAP SCREW, SS	3.000	2.00
HW2502D13	SS KEY, 3/16 SQ X 1.375	1.000	2.00
HA7000A04	KEY RETAINER 0.625 DIA SHAFTS	1.000	2.00
MJ5001A02	732 CL SEALANT 3 OZ DIXIE BEARING 289100	0.001	23.00
MJ1000A02	GREASE, POLYREX EM EXXON	0.050	10.00
35FN3002A05SP	EXTERNAL FAN, PLASTIC, FOR .637 DIA JOUR	1.000	22.00
HA3100S14	THRUBOLT 10X32 X 8.875 302 OR 303 SS	4.000	5.00

Parts List (continued)			
Product ID	Description	Quantity	List Price
LB1125C04	STD-E (STOCK CTN LABEL STD-E WITH FLAG)	1.000	2.00
36PA1000	PACK GROUP W/LB5001	1.000	17.00

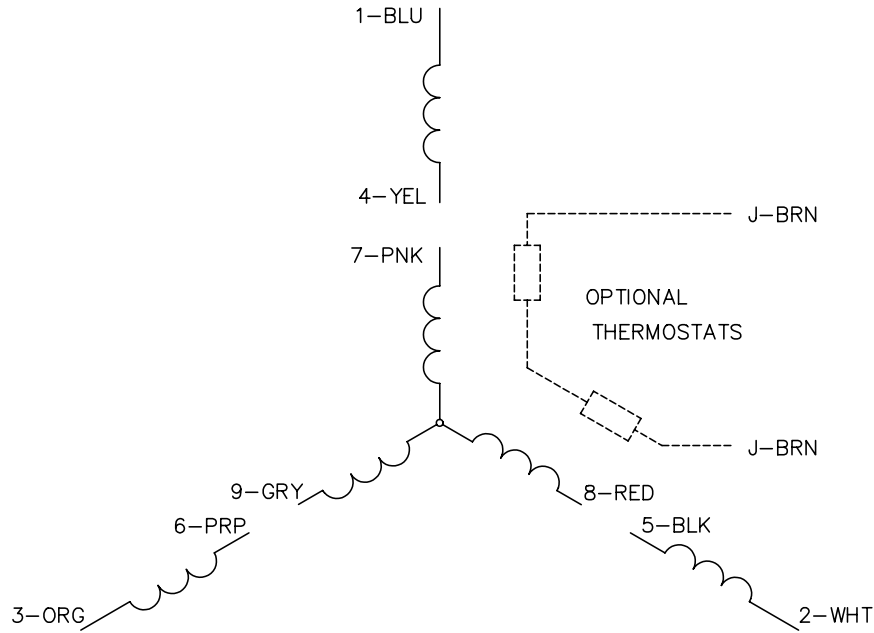


CUSTOMER IS RESPONSIBLE FOR DETERMINING THAT MOTOR PERFORMANCE IS SUITABLE IN THE APPLICATION.

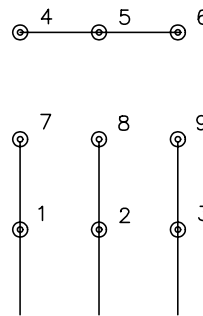
REV. DESC: NEW		BALDOR ELECTRIC Co.	
REV. LTR: -	VERSION: 00		
0181175	FILE: \AAA\00137\768	REVISED: 11:06:24 06/29/2006	
	MTL: -	BY: ENBRYPO	
		HOR 56C TEFC 35M WD4 W/LOCKED PU BRG & LASER ETCHED BAND	

35LYV810

CD0005

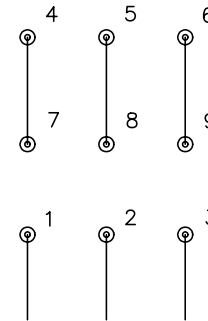


LOW VOLTAGE
(2Y)



LINE

HIGH VOLTAGE
(1Y)



LINE

NOTES:

1. INTERCHANGE ANY TWO LINE LEADS TO REVERSE ROTATION.
2. OPTIONAL THERMOSTATS ARE PROVIDED WHEN SPECIFIED.
3. ACTUAL NUMBER OF INTERNAL PARALLEL CIRCUITS MAY BE A MULTIPLE OF THOSE SHOWN ABOVE.
4. LEAD COLORS ARE OPTIONAL. LEADS MUST ALWAYS BE NUMBERED AS SHOWN.

REV. DESC: REVISE TO SHOW OPTIONAL COLORS

REV. LTR: E BY: JLP

REVISED: 01/19/99 10:15

TDR: 0171435

90000

FILE: AAA00005140

MDL: -

MTL: -

BALDOR ELECTRIC Co.

3PH, DV, 9 LEADS

CD0005