



# **BALDOR® • *RELIANCE***

## **Product Information Packet**

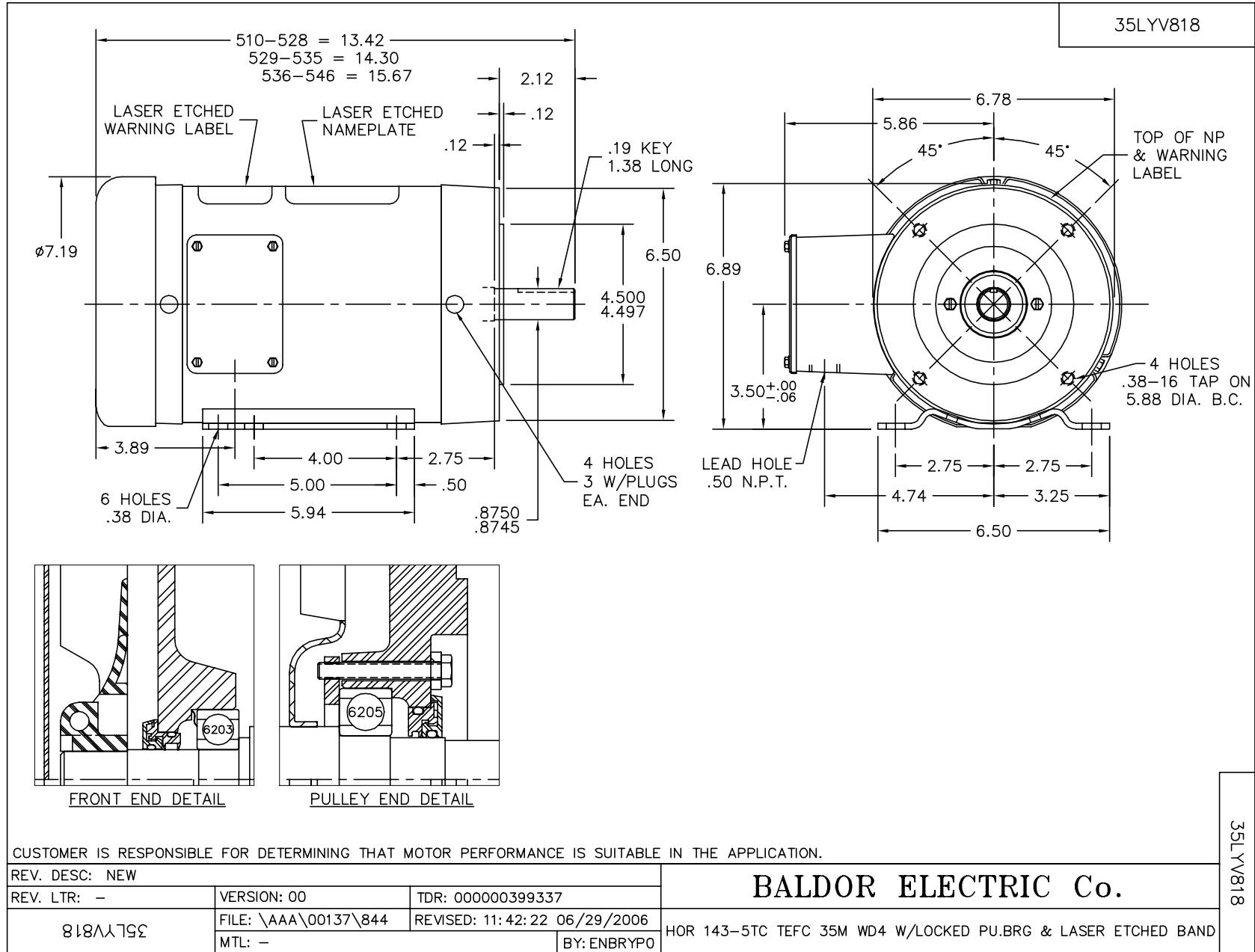
# **CSSWDM3559T**

**3HP,3450RPM,3PH,60HZ,143TC,3535M,TEFC,F1**

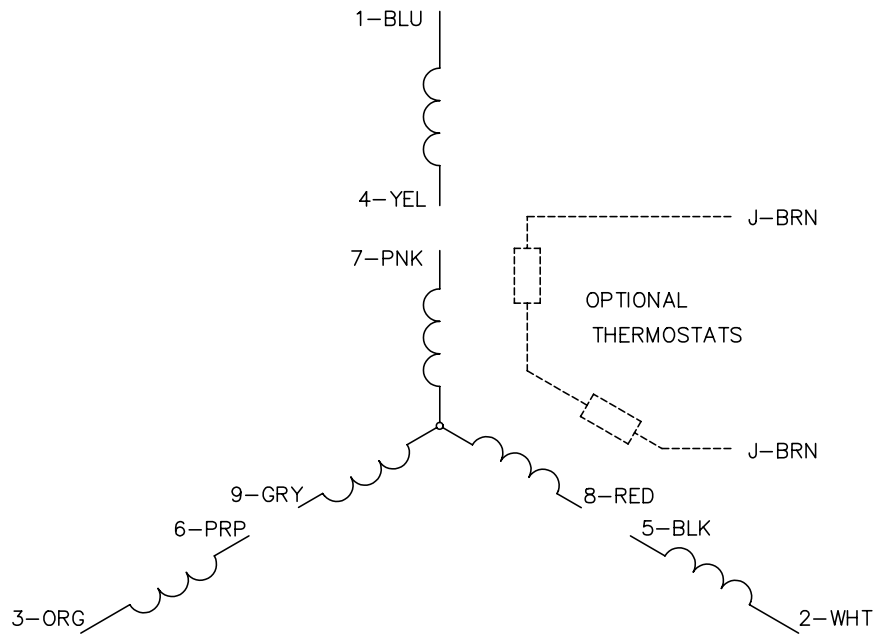
Product Detail							
<b>Revision:</b>	H	<b>Status:</b>	PRD/A	<b>Change #:</b>		<b>Proprietary:</b>	No
<b>Type:</b>	AC	<b>Prod Type:</b>	3535M	<b>Elec. Spec:</b>	35WGT886	<b>CD Diagram:</b>	CD0005
<b>Enclosure</b>	TEFC	<b>Mfg Plant:</b>		<b>Mech Spec:</b>	35V818	<b>Layout:</b>	35LYV818
<b>Frame:</b>	145TC	<b>Mounting:</b>	F1	<b>Poles:</b>	02	<b>Created Date:</b>	06-22-2007
<b>Base:</b>	RG	<b>Rotation:</b>	R	<b>Insulation:</b>	F	<b>Eff. Date:</b>	12-15-2008
<b>Leads:</b>	9#18	<b>Literature:</b>		<b>Elec. Diagram:</b>		<b>Replaced By:</b>	

<b>Parts List</b>			
<b>Product ID</b>	<b>Description</b>	<b>Quantity</b>	<b>List Price</b>
SA145409	SA 35V818T886H1	1.000	973.00
RA134558	RA 35V818T886H1	1.000	811.00
34FN3002A01SP	EXTERNAL FAN, PLASTIC, .637/.639 HUB W/	1.000	14.00
NS2512A01	INSULATOR, CONDUIT BOX X X	1.000	2.00
35CB5001A08	CONDUIT BOX KIT, S/P 9-2 (ALL STAINLESS)	1.000	175.00
11XW1032G06	10-32 X .38, TAPTITE II, HEX WSHR SLTD U	1.000	3.00
HW3001A01	D3019 BRASS WASHER(STIMP)	1.000	2.00
35EP1913A02	FR EP MADE FROM 35EP1913A01	1.000	398.00
HW4500A33	1/8 NPT STAINLESS,HOLO-KROME #13002,PRES	3.000	3.00
HW4606A01	JM CLIPPER/SEAL (WDE-0667-1064-BH49)	1.000	45.00
HW5100A03SP	WAVY WASHER (W1543-017)	1.000	2.00
35PE1914A02	PU EP ASSY. FOR LOCKED BRG	1.000	607.00
HW4606A02	JM CLIPPER/SEAL (LWE-0938-1624-AL23)	1.000	46.00
12XN1032S22	10-32 X 1 3/8 SLOT HEX, STAINLESS STEEL	2.000	3.00
HA1049A01	DUBO LOK WASHER SIZE 10 (NYLON LOCK SEAL	2.000	2.00
HA1049A01	DUBO LOK WASHER SIZE 10 (NYLON LOCK SEAL	4.000	2.00
51XB1214A16	12-14X1.00 HXWSSLD SERTYB	1.000	2.00
35FH4005A39	IEC FH NO GREASER (#304 SS)CLEAN ONLY	1.000	35.00
10XN1032S06	HEX HD CAP SCREW, SS	3.000	2.00
HW2502D13	SS KEY, 3/16 SQ X 1.375	1.000	2.00
HA7000A01	KEY RETAINER 7/8" DIA SHAFT	1.000	2.00
MJ5001A02	732 CL SEALANT 3 OZ DIXIE BEARING 289100	0.001	23.00
MJ1000A02	GREASE, POLYREX EM EXXON	0.050	10.00
HA3100S19	THRUBOLT,10X32 - 9.812 SS X	4.000	9.00

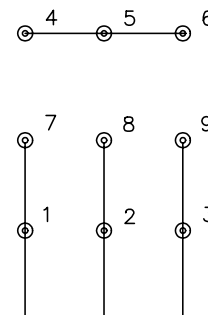
<b>Parts List (continued)</b>			
<b>Product ID</b>	<b>Description</b>	<b>Quantity</b>	<b>List Price</b>
LB1125C04	STD-E (STOCK CTN LABEL STD-E WITH FLAG)	1.000	2.00
36PA1000	PACK GROUP W/LB5001	1.000	17.00



CD0005

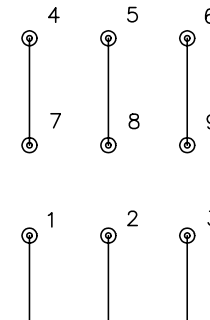


LOW VOLTAGE  
(2Y)



LINE

HIGH VOLTAGE  
(1Y)



LINE

NOTES:

1. INTERCHANGE ANY TWO LINE LEADS TO REVERSE ROTATION.
2. OPTIONAL THERMOSTATS ARE PROVIDED WHEN SPECIFIED.
3. ACTUAL NUMBER OF INTERNAL PARALLEL CIRCUITS MAY BE A MULTIPLE OF THOSE SHOWN ABOVE.
4. LEAD COLORS ARE OPTIONAL. LEADS MUST ALWAYS BE NUMBERED AS SHOWN.

REV. DESC: REVISE TO SHOW OPTIONAL COLORS			
REV. LTR: E	BY: JLP	REVISED: 01/19/99 10:15	TDR: 0171435
900000		FILE: AAA00005140	MDL: -
		MTL: -	

**BALDOR ELECTRIC Co.**

3PH, DV, 9 LEADS

CD0005