



# **BALDOR® • *RELIANCE***

## **Product Information Packet**

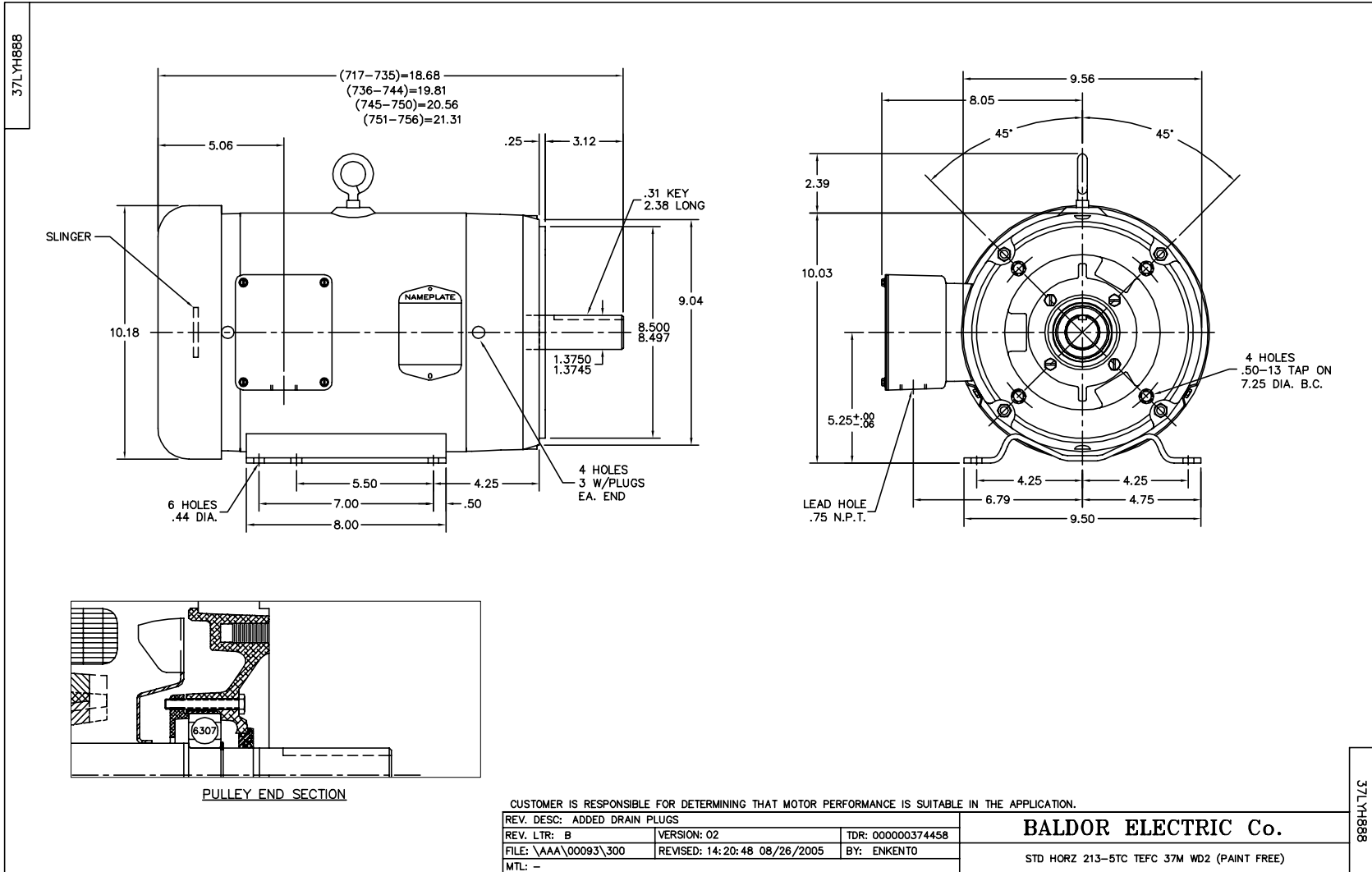
# **CSWDM3710T**

**7.5HP, 1770RPM, 3PH, 60HZ, 213TC, 3736M, TEFC**

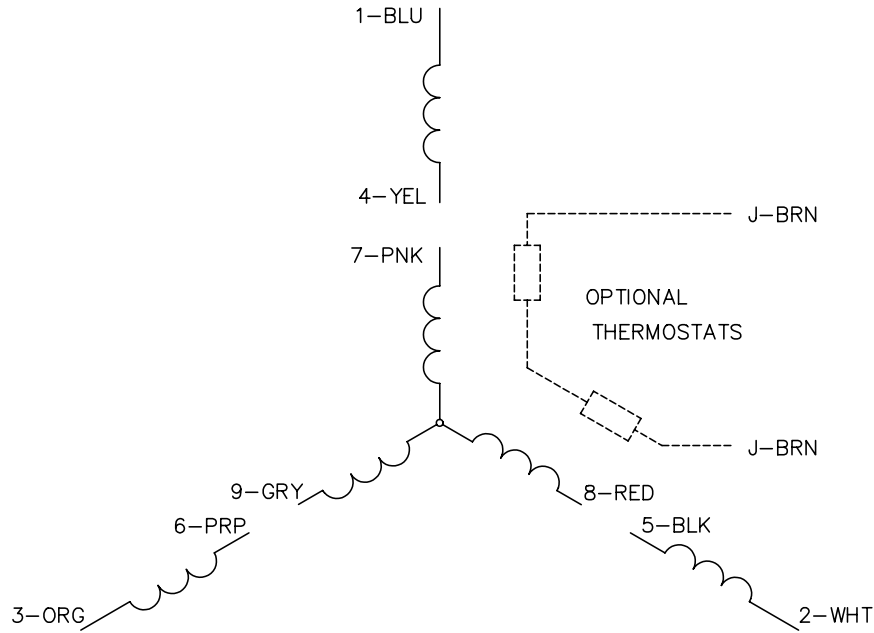
Product Detail									
Revision:	D	Status:	PRD/A	Change #:		Proprietary:	No		
Type:	AC	Prod Type:	3736M	Elec. Spec:	37WGT859	CD Diagram:	CD0005		
Enclosure	TEFC	Mfg Plant:		Mech Spec:	37H888	Layout:	37LYH888		
Frame:	213TC	Mounting:	F1	Poles:	04	Created Date:	08-19-2006		
Base:	RG	Rotation:	R	Insulation:	F	Eff. Date:	11-07-2008		
Leads:	9#14	Literature:		Elec. Diagram:		Replaced By:			
Nameplate NP1496L									
CAT.NO.	CSWDM3710T								
SPEC.	37H888T859H1								
HP	7.5								
VOLTS	208-230/460								
AMP	21-18.8/9.4								
RPM	1770								
FRAME	213TC	HZ			60	PH	3		
SER.F.	1.15	CODE			J	DES	A	CLASS	F
NEMA-NOM-EFF	90.2	PF			81				
RATING	40C AMB-CONT								
CC	010A	USABLE AT 208V							
DE	6307	ODE			6206				
ENCL	TEFC	SN							

<b>Parts List</b>			
<b>Product ID</b>	<b>Description</b>	<b>Quantity</b>	<b>List Price</b>
SA147571	SA 37H888T859H1	1.000	892.00
RA136612	RA 37H888T859H1	1.000	743.00
37FN3002C01	EXTERNAL FAN, PLASTIC, 6.00 BLADE, 1.15	1.000	16.00
S/P101-000-000	EPACT PROCEDURES-FS PLANT-POLYREX EM, NO	1.000	
HW3200S01	EYEBOLT 3/8-16 X3/4 S.S. TDR #35988	1.000	68.00
37CB3005A04MU	K.O. BOX-MODEL 37 .75 NPT LEAD	1.000	31.00
37GS1015	GASKET, FOR 37 WD KOBX'S (SANTOPRENE)	1.000	7.00
51XW2520A12	.25-20 X .75, TAPTITE II, HEX WSHR SLTD	2.000	2.00
11XW1032G06	10-32 X .38, TAPTITE II, HEX WSHR SLTD U	1.000	3.00
37EP3101A49MU	FR EP 37 L & M TEFC (FOR S.P. #9D)	1.000	127.00
HW4500A33	1/8 NPT STAINLESS,HOLO-KROME #13002,PRES	3.000	3.00
HW5100A06	W2420-025 WVY WSHR (WB)	1.000	2.00
37EP3300A25MU	FACE MT EP-ENCL-307 BRG-213TC-215TC NO G	1.000	167.00
HW4500A33	1/8 NPT STAINLESS,HOLO-KROME #13002,PRES	3.000	3.00
HW4606A04	JM CLIPPER/SEAL (LWE-1376-2125-AL45)	1.000	43.00
10XN2520S30	1/4-20 X 1 7/8 HEX HEAD SS	4.000	3.00
XY3118S12	5/16-18 HEX NUT, STAINLESS STEEL	4.000	2.00
51XB1214A20	12-14X1.25 HXWSSLD SERTYB	1.000	2.00
37FH4000A45	STAINLESS FAN COVER, NO GREASER SLOT (FO	1.000	51.00
11XW1032S06	10-32 X .38, TAPTITE II, HEX WSHR SLTD U	3.000	3.00
37CB4514	37 CB LID	1.000	8.00
37GS1008A02	37 GS FOR CB LID - WHITE NEOPRENE	1.000	3.00
59XW0832S07	TAPTITE II,HEX WSHR UNSLTD SER,410 S.S.,	4.000	2.00
HA1005A02SP	SLINGER--06 BEARING, 1.14 I.D., 2.00 O.D	1.000	3.00

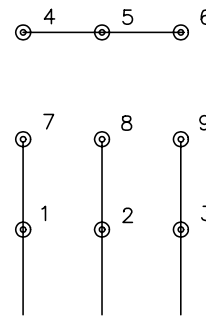
<b>Parts List (continued)</b>			
<b>Product ID</b>	<b>Description</b>	<b>Quantity</b>	<b>List Price</b>
HW2502F21	#303 SS,SQ KEY 5/16 X 2.375	1.000	6.00
HA7000A02	KEY RETAINER RING, 1 1/8 DIA, 1 3/8 DIA	1.000	2.00
10XF0440S02	04-40 X 1/8 TYPE F HEX HD STAINLESS STIC	2.000	2.00
LB1115	LABEL,LIFTING DEVICE (ON ROLLS0	1.000	2.00
LB1164	LABEL,WARNING AND DRAIN F/HOSE DOWN	1.000	2.00
MJ1000A02	GREASE, POLYREX EM EXXON	0.050	10.00
MJ5001A02	732 CL SEALANT 3 OZ DIXIE BEARING 289100	0.001	23.00
MJ5001A05	CHEM-CALK 900 WHITE #75 BOSTICK CONSTRU	0.001	94.00
HA3104S17	THRUBOLT 13.250LG SS	4.000	17.00
LB1125C04	STD-E (STOCK CTN LABEL STD-E WITH FLAG)	1.000	2.00
LC0005	CONN.DIA.,TYPE M,9-LD,DUAL VOLTAGE,REVER	1.000	2.00
NP1496L	STD NP S.S.WASHDOWN W/ WD GRAPHICS LASER	1.000	
36PA1001	PACKAGING GROUP	1.000	25.00



CD0005

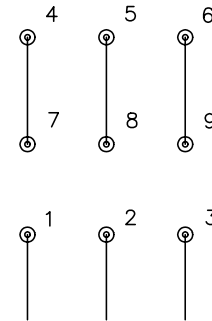


LOW VOLTAGE  
(2Y)



LINE

HIGH VOLTAGE  
(1Y)



LINE

NOTES:

1. INTERCHANGE ANY TWO LINE LEADS TO REVERSE ROTATION.
2. OPTIONAL THERMOSTATS ARE PROVIDED WHEN SPECIFIED.
3. ACTUAL NUMBER OF INTERNAL PARALLEL CIRCUITS MAY BE A MULTIPLE OF THOSE SHOWN ABOVE.
4. LEAD COLORS ARE OPTIONAL. LEADS MUST ALWAYS BE NUMBERED AS SHOWN.

REV. DESC: REVISE TO SHOW OPTIONAL COLORS			
REV. LTR: E	BY: JLP	REVISED: 01/19/99 10:15	TDR: 0171435
900000		FILE: AAA00005140	MDL: -
		MTL: -	

**BALDOR ELECTRIC Co.**

3PH, DV, 9 LEADS

CD0005