



BALDOR® • *RELIANCE*

Product Information Packet

CWDM3543

.75HP,1140RPM,3PH,60HZ,56C,3532M,TENV,F1

Product Detail							
Revision:	F	Status:	PRD/A	Change #:		Proprietary:	No
Type:	AC	Prod Type:	3532M	Elec. Spec:	35WGS992	CD Diagram:	CD0005
Enclosure	TENV	Mfg Plant:		Mech Spec:	35S588	Layout:	35LYS588
Frame:	56C	Mounting:	F1	Poles:	06	Created Date:	
Base:	RG	Rotation:	R	Insulation:	F	Eff. Date:	12-02-2008
Leads:	9#18	Literature:		Elec. Diagram:		Replaced By:	

Nameplate NP1496L									
CAT.NO.	CWDM3543								
SPEC.	35S588S992								
HP	.75								
VOLTS	208-230/460								
AMP	2.7-2.6/1.3								
RPM	1140								
FRAME	56C	HZ			60	PH	3		
SER.F.	1.15	CODE			H	DES	B	CLASS	F
NEMA-NOM-EFF	78.5	PF			70				
RATING	40C AMB-CONT								
CC				USABLE AT 208V		2.7			
DE	6205	ODE			6203				
ENCL	TENV	SN							

Parts List			
Product ID	Description	Quantity	List Price
SA084646	SA 35S588S992	1.000	461.00
RA077810	RA 35S588S992	1.000	385.00
NS2512A01	INSULATOR, CONDUIT BOX X X	1.000	2.00
35CB3008A01W	35 CB .50 NPT @ 6, MACH WHITE EPOXY	1.000	15.00
35GS1022A03SP	GASKET BOX .125 THK WHITE NEOPRENE	1.000	3.00
51XB1016A07	10-16 X 7/16 HXWSSLD SERTYB	2.000	2.00
11XW1032G06	10-32 X .38, TAPTITE II, HEX WSHR SLTD U	1.000	3.00
35EP3100M71MW	SPL FR ENDPLATE -TENV- SP.#9 (WHITE EPOX	1.000	46.00
HW4032A01	BLUE DRAIN PLUG FOR WASH DOWN MOTORS	3.000	2.00
HW5100A03SP	WAVY WASHER (W1543-017)	1.000	2.00
35EP3300A48MW	SPL FACE MTD EP - 205 BRG - W/SEAL FOR W	1.000	38.00
HW4032A01	BLUE DRAIN PLUG FOR WASH DOWN MOTORS	3.000	2.00
HW4600B49SP	SEAL 0.938 X 1.624 X 0.250 SINGLE LIP DB	1.000	7.00
12XN1032S20	10-32 X 1-1/4 HEX M.S. , STAINLESS STEEL	2.000	3.00
35CB4522	35 LIPPED CB LID AUTOPHORETIC	1.000	3.00
35GS1030A02	35 GS FOR CB LID - WHITE NEOPRENE	1.000	6.00
59XW0832S07	TAPTITE II,HEX WSHR UNSLTD SER,410 S.S.,	4.000	2.00
HW4600B46SP	SEAL,V22A FORSHEDA OR C-R # 400220	1.000	6.00
HW2502D13	SS KEY, 3/16 SQ X 1.375	1.000	2.00
HA7000A04	KEY RETAINER 0.625 DIA SHAFTS	1.000	2.00
MJ5001A01	46-665 RED SEALER	0.001	57.00
10XF0440S02	04-40 X 1/8 TYPE F HEX HD STAINLESS STIC	2.000	2.00
LB1164	LABEL,WARNING AND DRAIN F/HOSE DOWN	1.000	2.00
MJ1000A02	GREASE, POLYREX EM EXXON	0.050	10.00

Parts List (continued)			
Product ID	Description	Quantity	List Price
MG1025Z20	ACTIVATOR WILKOFAS 060.32	0.010	218.00
MG1025W11	PAINT- 781-101 WILKOFAS WHITE EPOXY	0.017	333.00
LC0005	CONN.DIA.,TYPE M,9-LD,DUAL VOLTAGE,REVER	1.000	2.00
HA3100S09	THRUBOLT 9.25 LENGTH SS	4.000	3.00
LB1125C01	STD (STOCK) CARTON LABEL BALDOR WITH FLA	1.000	2.00
NP1496L	STD NP S.S.WASHDOWN W/ WD GRAPHICS LASER	1.000	
PA1000	PACKING GROUP 3500 SHORT	1.000	8.00

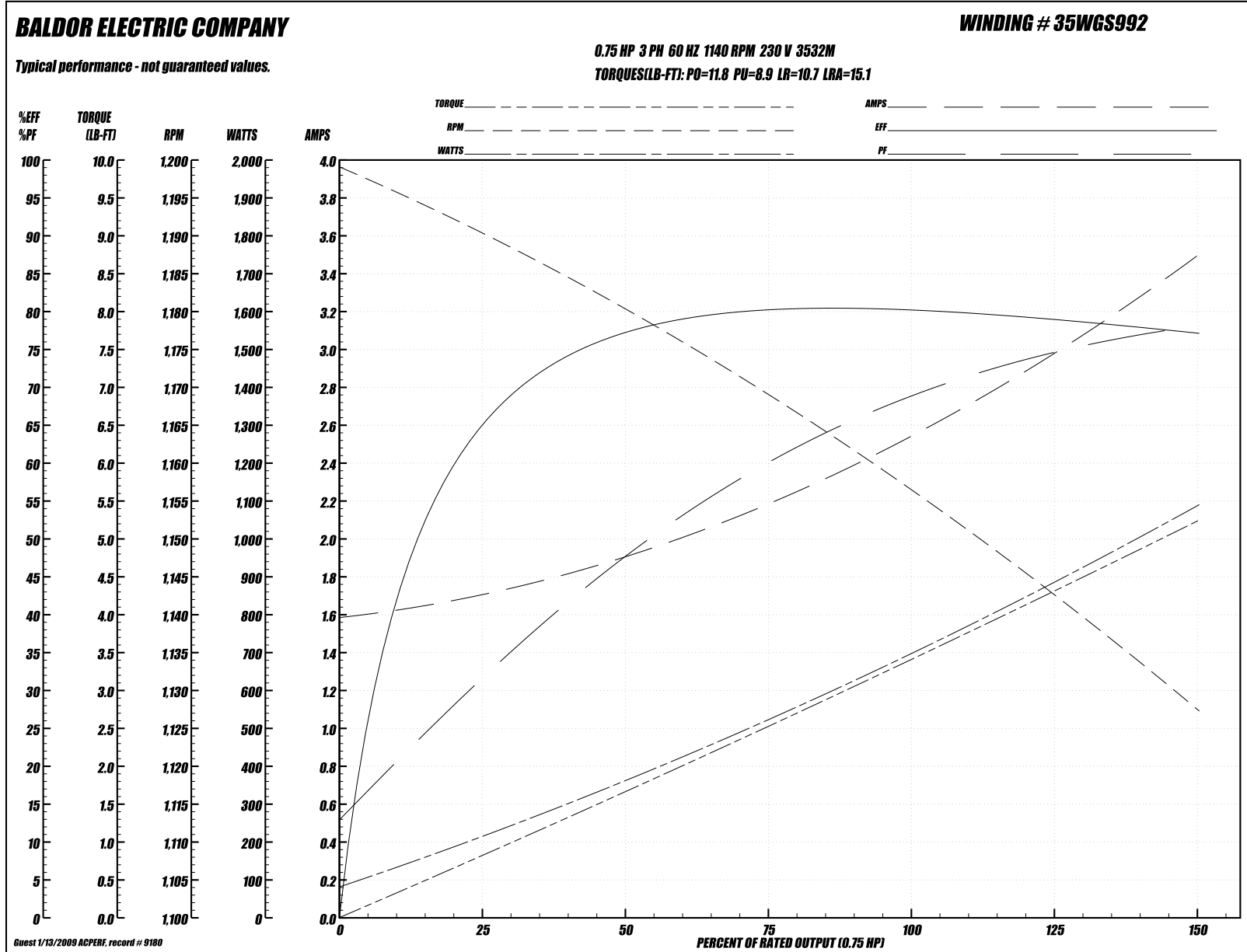
Performance Data at 230V, 60Hz, 0.75HP (Typical performance - Not guaranteed values)
General Characteristics

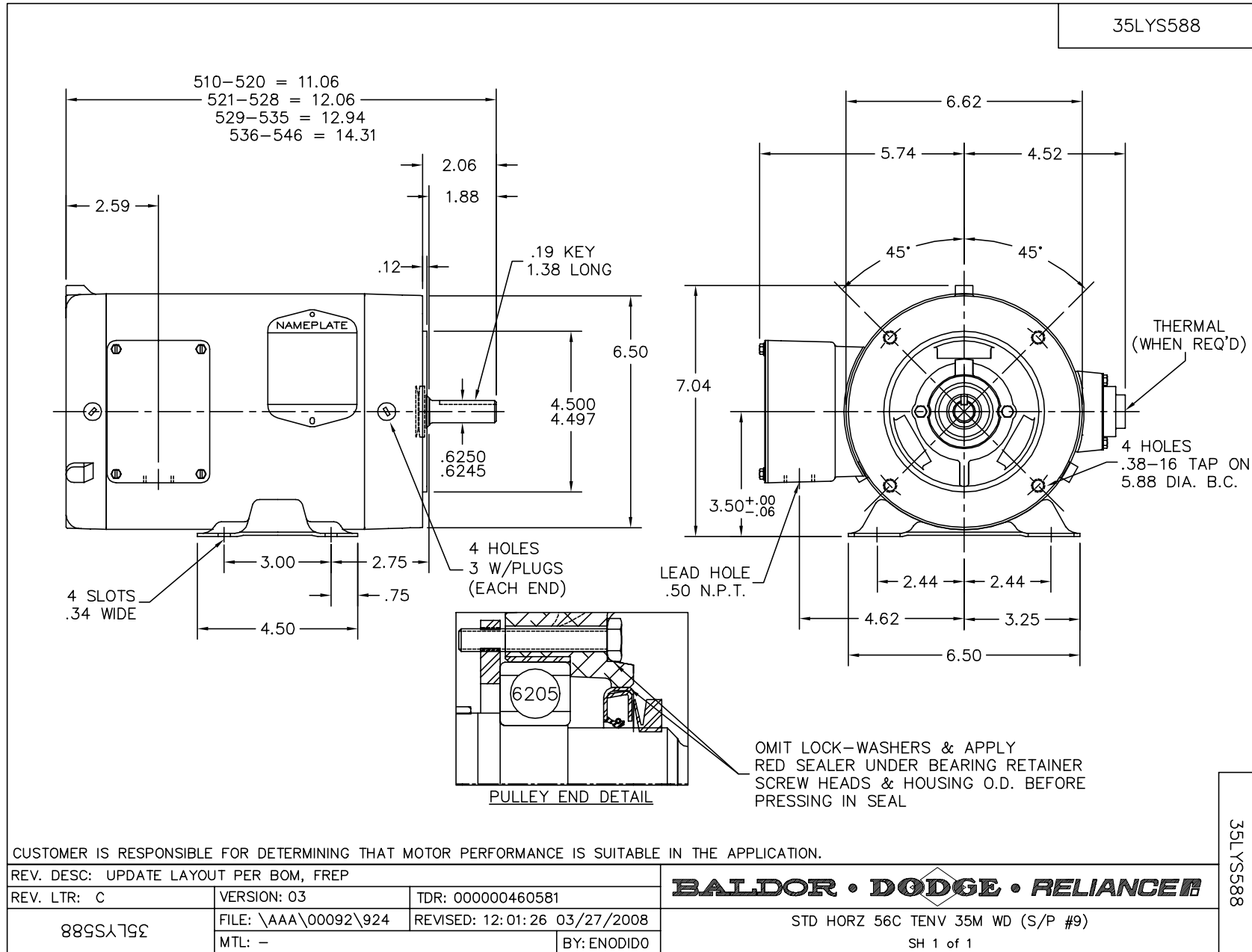
Full Load Torque:	3.5 LB-FT	Start Configuration:	DOL
No-Load Current:	1.6 Amps	Break-Down Torque:	11.8 LB-FT
Line-line Res. @ 25°C.:	21.62 Ohms A Ph / 0.0 Ohms B Ph	Pull-Up Torque:	8.9 LB-FT
Temp. Rise @ Rated Load:	0°C	Locked-Rotor Torque:	10.7 LB-FT
Temp. Rise @ S.F. Load:	0°C	Starting Current:	15.1 Amps

Load Characteristics

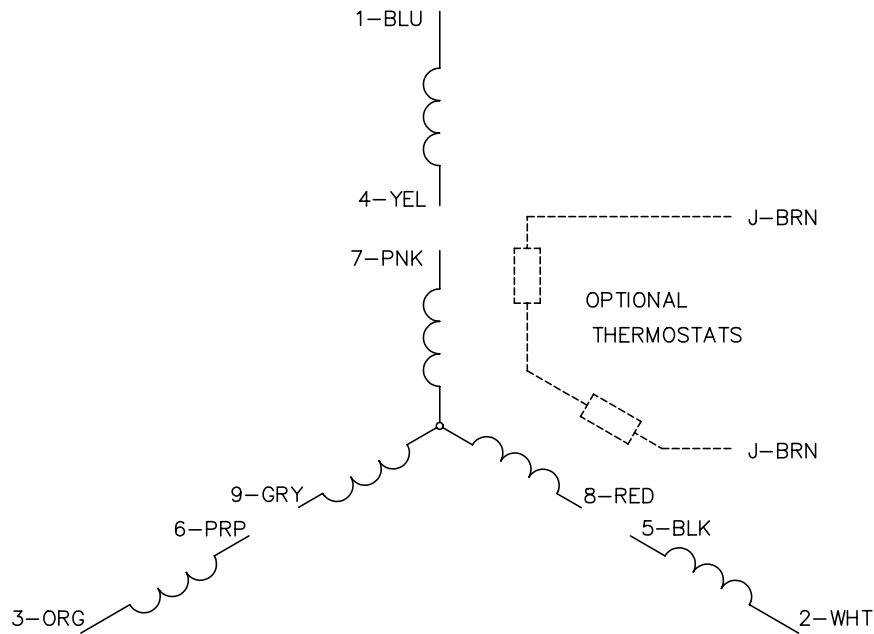
% of Rated Load:	25	50	75	100	125	150	S.F.
Power Factor:	35.0	50.0	60.0	68.0	76.0	78.0	73.0
Efficiency:	63.0	77.2	82.2	82.1	76.1	78.0	78.5
Speed:	1190.0	1179.0	1168.0	1156.0	1140.0	1128.0	1146.0
Line Amperes:	1.7	1.9	2.25	2.6	3.0	3.5	2.84

Performance Graph at 230V, 60Hz, 0.75HP (Typical performance - Not guaranteed values)

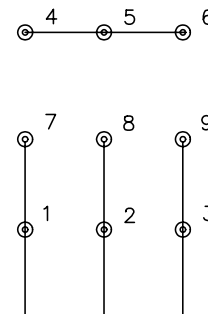




CD0005

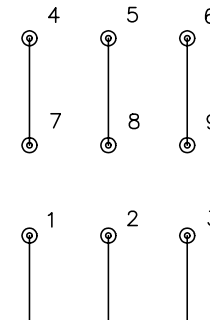


LOW VOLTAGE
(2Y)



LINE

HIGH VOLTAGE
(1Y)



LINE

NOTES:

1. INTERCHANGE ANY TWO LINE LEADS TO REVERSE ROTATION.
2. OPTIONAL THERMOSTATS ARE PROVIDED WHEN SPECIFIED.
3. ACTUAL NUMBER OF INTERNAL PARALLEL CIRCUITS MAY BE A MULTIPLE OF THOSE SHOWN ABOVE.
4. LEAD COLORS ARE OPTIONAL. LEADS MUST ALWAYS BE NUMBERED AS SHOWN.

REV. DESC: REVISE TO SHOW OPTIONAL COLORS			
REV. LTR: E	BY: JLP	REVISED: 01/19/99 10:15	TDR: 0171435
900000		FILE: AAA00005140	MDL: -
		MTL: -	

BALDOR ELECTRIC Co.

3PH, DV, 9 LEADS

CD0005