



# **BALDOR® • *RELIANCE***

## **Product Information Packet**

### **EFM2333T**

**15HP,1765RPM,3PH,60HZ,254T,0936M,TEFC,F2**

Product Detail							
Revision:	V	Status:	PRD/A	Change #:		Proprietary:	No
Type:	AC	Prod Type:	0936M	Elec. Spec:	09WGX717	CD Diagram:	CD0005
Enclosure	TEFC	Mfg Plant:		Mech Spec:	09C106	Layout:	09LYC106
Frame:	254T	Mounting:	F2	Poles:	04	Created Date:	
Base:	RG	Rotation:	R	Insulation:	F	Eff. Date:	04-15-2008
Leads:	9#12	Literature:		Elec. Diagram:		Replaced By:	

Nameplate NP1259L							
CAT.NO.	EFM2333T						
SPEC.	09C106X717G1						
HP	15						
VOLTS	230/460						
AMP	37/18.5						
RPM	1765						
FRAME	254T	HZ	60	PH	3		
SER.F.	1.15	CODE	H	DES	B	CL	F
NEMA-NOM-EFF	92.4	PF	82				
RATING	40C AMB-CONT						
CC	010A	USABLE AT 208V	38.9				
DE	6309	ODE	6208				
ENCL	TEFC	SN					

<b>Parts List</b>			
<b>Product ID</b>	<b>Description</b>	<b>Quantity</b>	<b>List Price</b>
SA039448	SA 09C106X717G1	1.000	1,165.00
RA035405	RA 09C106X717G1	1.000	971.00
S/P107-000-005	SUPER-E PROC'S(254/6 FR.) ZK PLANT - POL	1.000	
HW1002A63	WASHER, 5/8 HI-COLLAR SPRLCKWASHER	1.000	3.00
09CB3002SP	CB W/1.38 LEAD HOLE FOR 37, 39, 307 & 30	1.000	26.00
09GS1000SP	GASKET-CONDUIT BOX, 1/16 THICK LEXIDE	1.000	4.00
10XN2520K12	1/4-20 X.75 GRD 5	2.000	2.00
HW1001A25	LOCKWASHER 1/4, ZINC PLT .493 OD, .255 I	2.000	3.00
WD1000B17	KPA-8C BURNDY TERMINAL	1.000	4.00
11XW1032G06	10-32 X .38, TAPTITE II, HEX WSHR SLTD U	1.000	4.00
09EP1100A14SP	ENDPLATE, MACH	1.000	182.00
XY3816A12	3/8-16 FINISHED NUT	4.000	2.00
HW1001A38	LOCKWASHER 3/8, ZINC PLT .688 OD, .382 I	4.000	3.00
HW5100A08	W3118-035 WVY WSHR (WB)	1.000	3.00
10XN2520K28	1/4-20 X 1.75" HX HD SCRWGRADE 5, ZINC P	2.000	2.00
HW1001A25	LOCKWASHER 1/4, ZINC PLT .493 OD, .255 I	2.000	3.00
09EP1101A11SP	PU ENDPLATE, MACH	1.000	150.00
HW4600B44SP	V-RING SLINGER 1.500 X 2.290 X 0.280	1.000	6.00
10XN2520K36	1/4-20 X 2.25" HX HD SCRWGRADE 5, ZINC P	4.000	4.00
HW1001A25	LOCKWASHER 1/4, ZINC PLT .493 OD, .255 I	4.000	3.00
HA3113A02	THRUBOLT 3/8-16X16.625	4.000	5.00
HW1001A38	LOCKWASHER 3/8, ZINC PLT .688 OD, .382 I	4.000	3.00
09FH4000SP	FAN COVER, STAMPED	1.000	153.00
HA2081A05	SPACER TUBE, 309 FAN HSG, 2.00 LONG	4.000	3.00

<b>Parts List (continued)</b>			
<b>Product ID</b>	<b>Description</b>	<b>Quantity</b>	<b>List Price</b>
XY3816A12	3/8-16 FINISHED NUT	4.000	2.00
HW1001A38	LOCKWASHER 3/8, ZINC PLT .688 OD, .382 I	4.000	3.00
09CB3501SP	CONDUIT BOX LID FOR 09CB3001 & 09CB3002	1.000	22.00
09GS1013SP	09 GS FOR 09CB3501 LID - LEXIDE	1.000	3.00
51XW2520A12	.25-20 X .75, TAPTITE II, HEX WSHR SLTD	2.000	3.00
HW2501G25	KEY, 3/8 SQ X 2.875	1.000	6.00
LB1115	LABEL,LIFTING DEVICE (ON ROLLS0	1.000	3.00
LB5040	INSTRUCTION TAG, AC & DC	1.000	3.00
HA4051A00	PLASTIC CAP FOR GREASE FITTING	1.000	3.00
HW4500A05	1669B ALEM/UNIV860 GR FTG X	1.000	8.00
HW4500A17	317400 ALEMITE GREASE RELIEF	1.000	5.00
HA4001A01SP	DRAIN PLUG, PLASTIC (MICRO PLAS)	1.000	3.00
MJ1000A02	GREASE, POLYREX EM EXXON	0.080	12.00
HA4051A00	PLASTIC CAP FOR GREASE FITTING	1.000	3.00
HW4500A03	GREASE FITTING, .125 NPT 1610(ALEMITE) 8	1.000	3.00
HW4500A17	317400 ALEMITE GREASE RELIEF	1.000	5.00
HA4001A01SP	DRAIN PLUG, PLASTIC (MICRO PLAS)	1.000	3.00
85XU0407A04	#4-7 X 1/4 DRIVE PIN	2.000	3.00
MG1000Y03	WILCO 149-708 GOLD PAINT SUPER E	0.050	314.00
09FN3001D01	EXTERNAL FAN, PLASTIC	1.000	82.00
51XB1214A20	12-14X1.25 HXWSSLD SERTYB	1.000	3.00
HW2500A25	WOODRUFF KEY USA #1008 #BLOW CARBON STEE	1.000	3.00
LB1125C02	SUPER-E (STOCK CTN LABEL SUPER-E WITH FL	4.000	3.00
LC0005E02	SPL CONN.DIA./WARN.LABEL(LC0005/LB1119)	1.000	3.00

<b>Parts List (continued)</b>			
<b>Product ID</b>	<b>Description</b>	<b>Quantity</b>	<b>List Price</b>
NP1259L	STD LASER ENGRAVED, SUPER E,UL CSA CC, W	1.000	
09PA1000	PACKAGING GROUP COMBINED PRINT	1.000	115.00
LB1357	ENERGY GUIDE LABEL (BOX LABEL)	2.000	3.00

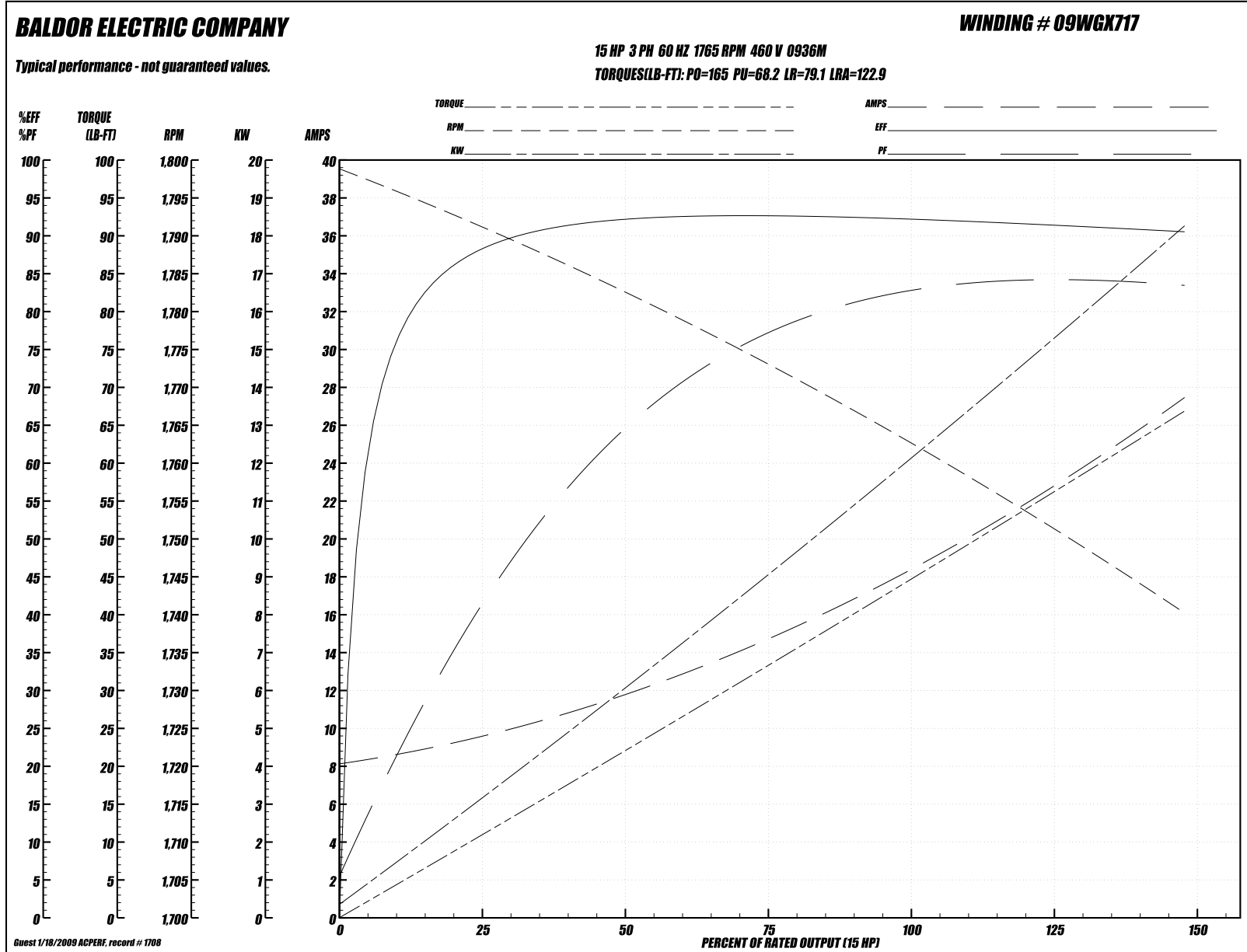
**Performance Data at 460V, 60Hz, 15.0HP (Typical performance - Not guaranteed values)**
**General Characteristics**

<b>Full Load Torque:</b>	44.6 LB-FT	<b>Start Configuration:</b>	DOL
<b>No-Load Current:</b>	8.33 Amps	<b>Break-Down Torque:</b>	165.0 LB-FT
<b>Line-line Res. @ 25°C.:</b>	0.633 Ohms A Ph / 0.0 Ohms B Ph	<b>Pull-Up Torque:</b>	68.2 LB-FT
<b>Temp. Rise @ Rated Load:</b>	63°C	<b>Locked-Rotor Torque:</b>	79.1 LB-FT
<b>Temp. Rise @ S.F. Load:</b>	83°C	<b>Starting Current:</b>	122.9 Amps

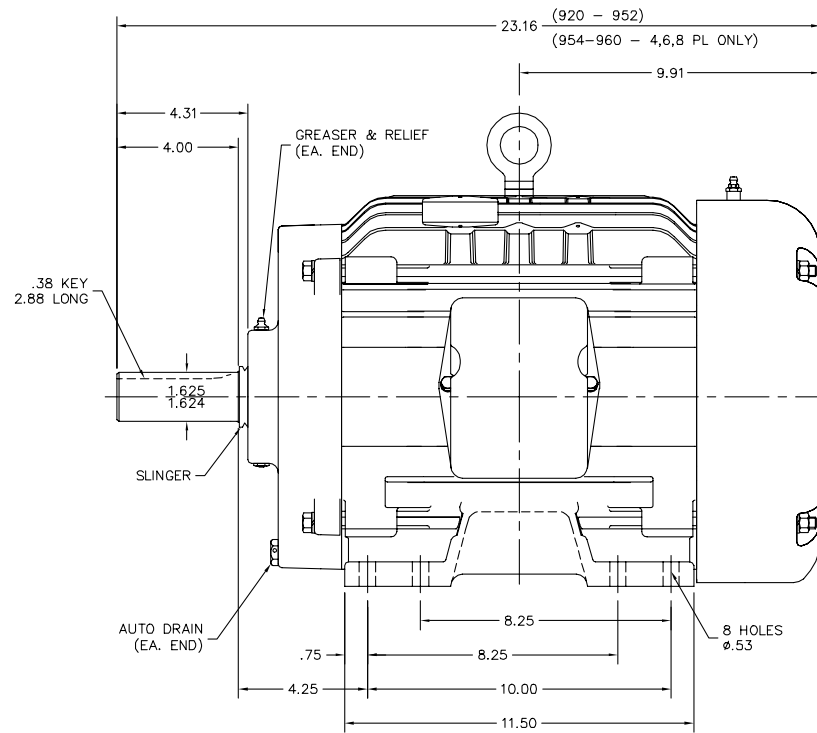
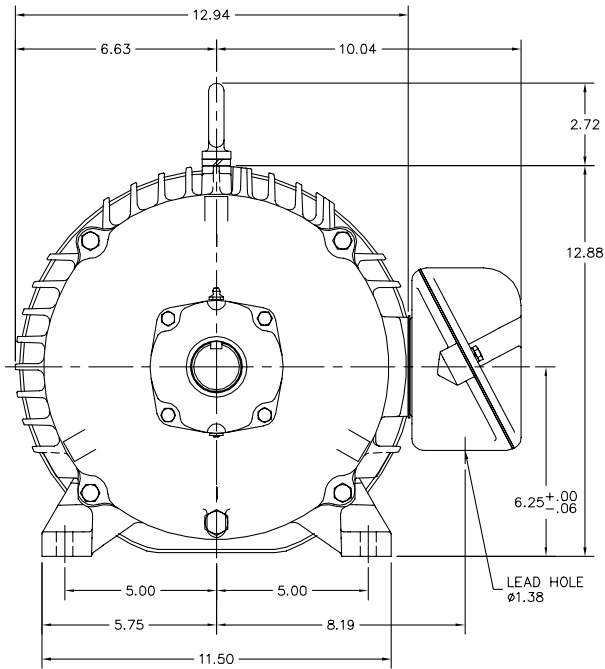
**Load Characteristics**

<b>% of Rated Load:</b>	<b>25</b>	<b>50</b>	<b>75</b>	<b>100</b>	<b>125</b>	<b>150</b>	<b>S.F.</b>
<b>Power Factor:</b>	43.0	66.0	77.0	82.0	84.0	85.0	83.0
<b>Efficiency:</b>	87.7	91.9	92.6	92.4	91.6	90.4	92.0
<b>Speed:</b>	1791.0	1782.0	1773.0	1763.0	1752.0	1740.0	1757.0
<b>Line Amperes:</b>	9.38	11.63	14.87	18.54	22.71	27.32	21.02

Performance Graph at 460V, 60Hz, 15.0HP (Typical performance - Not guaranteed values)



09LYC106



CUSTOMER IS RESPONSIBLE FOR DETERMINING THAT MOTOR PERFORMANCE IS SUITABLE IN THE APPLICATION.

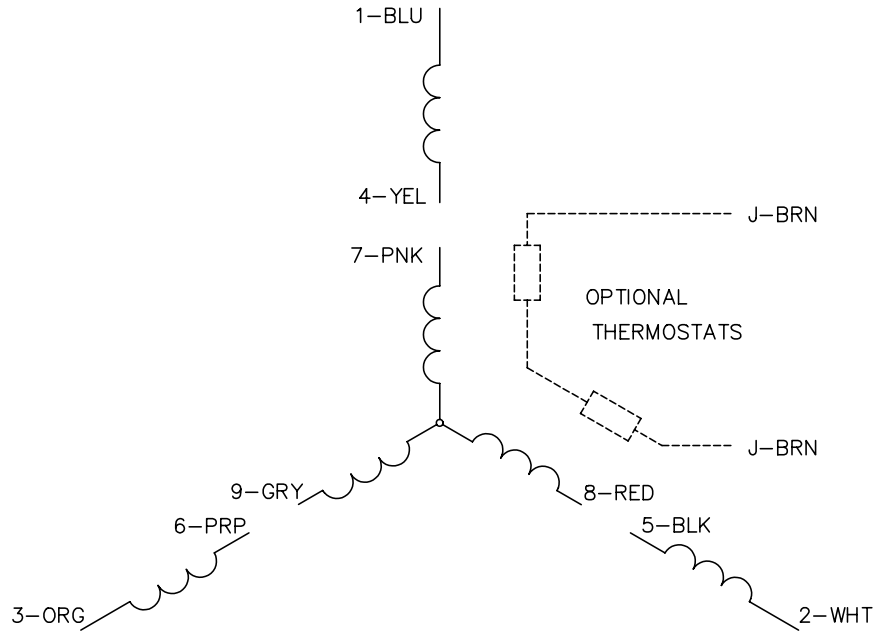
REV. DESC: CORRECT GRAPHICS		
REV. LTR: G	VERSION: 02	TDR: 000000418711
FILE: \AAA\00044\870	REVISED: 10;11:18 01/09/2007	BY: ENBREW0
MTL: -		

**BALDOR ELECTRIC Co.**

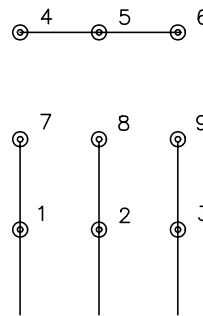
STD HORZ TEFC 254-6T F2

09LYC106

CD0005

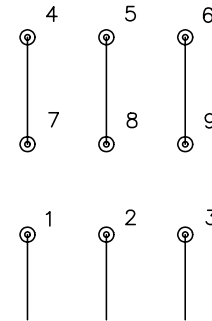


LOW VOLTAGE  
(2Y)



LINE

HIGH VOLTAGE  
(1Y)



LINE

NOTES:

1. INTERCHANGE ANY TWO LINE LEADS TO REVERSE ROTATION.
2. OPTIONAL THERMOSTATS ARE PROVIDED WHEN SPECIFIED.
3. ACTUAL NUMBER OF INTERNAL PARALLEL CIRCUITS MAY BE A MULTIPLE OF THOSE SHOWN ABOVE.
4. LEAD COLORS ARE OPTIONAL. LEADS MUST ALWAYS BE NUMBERED AS SHOWN.

REV. DESC: REVISE TO SHOW OPTIONAL COLORS			
REV. LTR: E	BY: JLP	REVISED: 01/19/99 10:15	TDR: 0171435
900000		FILE: AAA00005140	MDL: -
		MTL: -	

**BALDOR ELECTRIC Co.**

3PH, DV, 9 LEADS

CD0005