



# **BALDOR® • *RELIANCE***

## **Product Information Packet**

### **EJMM3546T**

**1HP,1765RPM,3PH,60HZ,143JM,3524M,TEFC,F1**

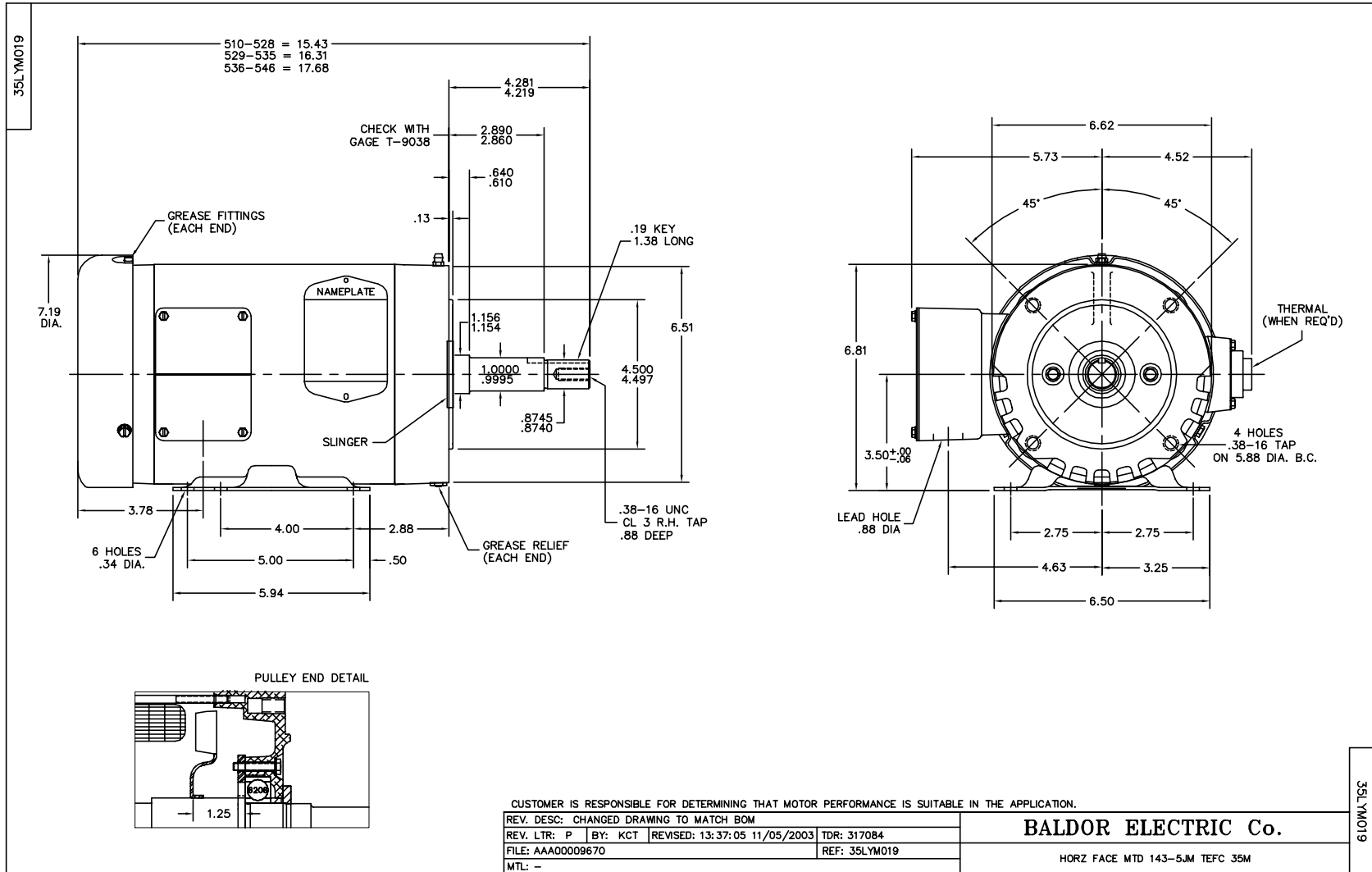
| Product Detail |       |             |       |                |          |               |            |
|----------------|-------|-------------|-------|----------------|----------|---------------|------------|
| Revision:      | C     | Status:     | PRD/A | Change #:      |          | Proprietary:  | No         |
| Type:          | AC    | Prod Type:  | 3524M | Elec. Spec:    | 35WGP529 | CD Diagram:   | CD0005     |
| Enclosure      | TEFC  | Mfg Plant:  |       | Mech Spec:     | 35M019   | Layout:       | 35LYM019   |
| Frame:         | 143JM | Mounting:   | F1    | Poles:         | 04       | Created Date: | 08-01-2007 |
| Base:          | RG    | Rotation:   | R     | Insulation:    | F        | Eff. Date:    | 12-08-2008 |
| Leads:         | 9#18  | Literature: |       | Elec. Diagram: |          | Replaced By:  |            |

**Nameplate NP1259L**

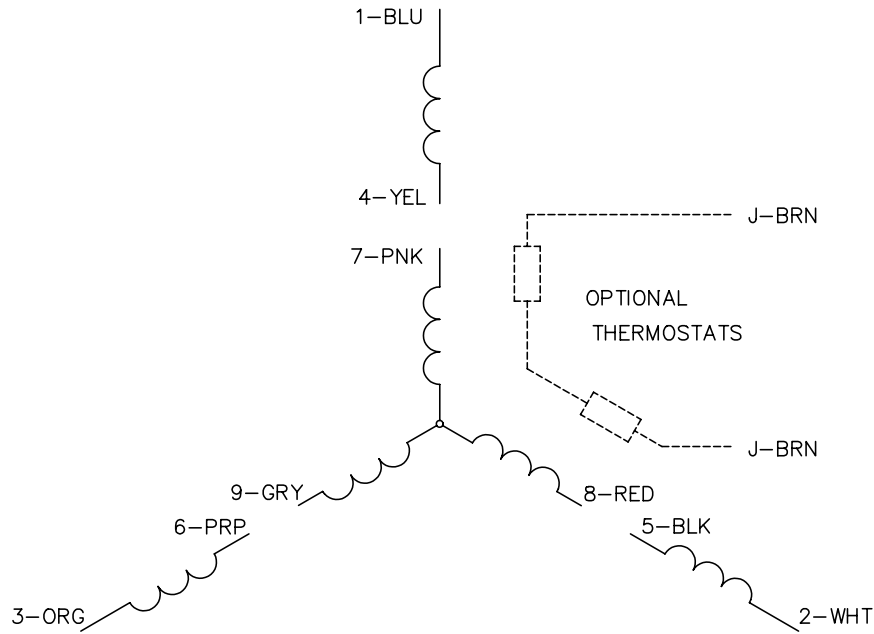
|              |              |      |                |     |   |    |   |
|--------------|--------------|------|----------------|-----|---|----|---|
| CAT.NO.      | EJMM3546T    |      |                |     |   |    |   |
| SPEC.        | 35M019P529G1 |      |                |     |   |    |   |
| HP           | 1            |      |                |     |   |    |   |
| VOLTS        | 208-230/460  |      |                |     |   |    |   |
| AMP          | 3.3-3/1.5    |      |                |     |   |    |   |
| RPM          | 1765         |      |                |     |   |    |   |
| FRAME        | 143JM        | HZ   | 60             | PH  | 3 |    |   |
| SER.F.       | 1.15         | CODE | N              | DES | B | CL | F |
| NEMA-NOM-EFF | 87.5         | PF   | 70             |     |   |    |   |
| RATING       | 40C AMB-CONT |      |                |     |   |    |   |
| CC           |              |      | USABLE AT 208V |     |   |    |   |
| DE           | 6206         | ODE  | 6203           |     |   |    |   |
| ENCL         | TEFC         | SN   |                |     |   |    |   |

| <b>Parts List</b> |  |                 |                   |
|-------------------|--|-----------------|-------------------|
| <b>Product ID</b> | <b>Description</b>                       | <b>Quantity</b> | <b>List Price</b> |
| SA161705          | SA 35M019P529G1                          | 1.000           | 383.00            |
| RA150249          | RA 35M019P529G1                          | 1.000           | 319.00            |
| 34FN3002B01       | EXTERNAL FAN, PLASTIC, .637/.639 HUB W/  | 1.000           | 15.00             |
| S/P107-000-001    | SUPER E PROC'S-FS & WS PLTS-POLYREX EM G | 1.000           |                   |
| NS2512A01         | INSULATOR, CONDUIT BOX X X               | 1.000           | 2.00              |
| 35CB3007          | 35 CB CASTING W/.88 DIA. LEAD HOLE       | 1.000           | 27.00             |
| 36GS1000SP        | GASKET-CONDUIT BOX, .06 THICK #SV-330 LE | 1.000           | 5.00              |
| 51XB1016A07       | 10-16 X 7/16 HXWSSLD SERTYB              | 2.000           | 2.00              |
| 11XW1032G06       | 10-32 X .38, TAPTITE II, HEX WSHR SLTD U | 1.000           | 3.00              |
| 35EP3100M07       | FREP TEFC 203BRG,GRSR,RLF(RAISED FH PADS | 1.000           | 36.00             |
| HW4500A17         | 317400 ALEMITE GREASE RELIEF             | 1.000           | 4.00              |
| HW4500A01         | 1641B(ALEMITE)400 UNIV, GREASE FITT      | 1.000           | 2.00              |
| HW5100A03SP       | WAVY WASHER (W1543-017)                  | 1.000           | 2.00              |
| 35EP3401T05       | FACE ENCL 206 BRG W/GRS, RELIEF & TGHSLV | 1.000           | 42.00             |
| HW4500A17         | 317400 ALEMITE GREASE RELIEF             | 1.000           | 4.00              |
| HW4500A01         | 1641B(ALEMITE)400 UNIV, GREASE FITT      | 1.000           | 2.00              |
| 51XN1032A20       | 10-32 X 1 1/4 HX WS SL SR                | 2.000           | 2.00              |
| 51XB1214A16       | 12-14X1.00 HXWSSLD SERTYB                | 1.000           | 2.00              |
| 35FH4005A86       | IEC FH W/GRSR, NO DIMPLES W/AUTOPHERETIC | 1.000           | 10.00             |
| 51XW1032A06       | 10-32 X .38, TAPTITE II, HEX WSHR SLTD S | 3.000           | 3.00              |
| HA1005A02SP       | SLINGER--06 BEARING, 1.14 I.D., 2.00 O.D | 1.000           | 3.00              |
| 35CB4521          | 35 LIPPED CB LID (GALV & PHOSPH)         | 1.000           | 2.00              |
| 35GS1030          | 35 GS FOR CB LID - LEXIDE                | 1.000           | 2.00              |
| 51XW0832A07       | 8-32 X .44, TAPTITE II, HEX WSHR SLTD SE | 4.000           | 2.00              |

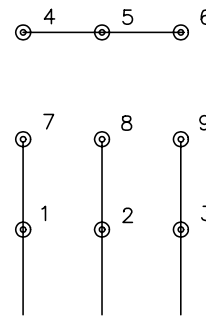
| <b>Parts List (continued)</b> |  |                 |                   |
|-------------------------------|--|-----------------|-------------------|
| <b>Product ID</b>             | <b>Description</b>                       | <b>Quantity</b> | <b>List Price</b> |
| HW2501D13SP                   | KEY, 3/16 SQ X 1.375                     | 1.000           | 2.00              |
| HA7000A01                     | KEY RETAINER 7/8" DIA SHAFT              | 1.000           | 2.00              |
| 10XF0440S02                   | 04-40 X 1/8 TYPE F HEX HD STAINLESS STIC | 2.000           | 2.00              |
| MJ1000A02                     | GREASE, POLYREX EM EXXON                 | 0.050           | 10.00             |
| HA3100A15                     | THRUBOLT 10-32 X 8.375                   | 4.000           | 2.00              |
| MG1000Y03                     | WILCO 149-708 GOLD PAINT SUPER E         | 0.017           | 263.00            |
| LB1125C02                     | SUPER-E (STOCK CTN LABEL SUPER-E WITH FL | 1.000           | 2.00              |
| LC0005E01                     | CONN.DIA./WARNING LABEL (LC0005/LB1119)  | 1.000           | 2.00              |
| NP1259L                       | STD LASER ENGRAVED, SUPER E,UL CSA CC, W | 1.000           |                   |
| 36PA1000                      | PACK GROUP W/LB5001                      | 1.000           | 17.00             |
| LB1357                        | ENERGY GUIDE LABEL (BOX LABEL)           | 1.000           | 2.00              |



CD0005

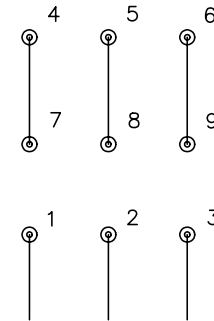


LOW VOLTAGE  
(2Y)



LINE

HIGH VOLTAGE  
(1Y)



LINE

NOTES:

1. INTERCHANGE ANY TWO LINE LEADS TO REVERSE ROTATION.
2. OPTIONAL THERMOSTATS ARE PROVIDED WHEN SPECIFIED.
3. ACTUAL NUMBER OF INTERNAL PARALLEL CIRCUITS MAY BE A MULTIPLE OF THOSE SHOWN ABOVE.
4. LEAD COLORS ARE OPTIONAL. LEADS MUST ALWAYS BE NUMBERED AS SHOWN.

|   |         |                         |              |
|---|---------|-------------------------|--------------|
| REV. DESC: REVISE TO SHOW OPTIONAL COLORS |         |                         |              |
| REV. LTR: E                               | BY: JLP | REVISED: 01/19/99 10:15 | TDR: 0171435 |
| 900000                                    |         | FILE: AAA00005140       | MDL: -       |
|   |         | MTL: -                  |              |

**BALDOR ELECTRIC Co.**

3PH, DV, 9 LEADS

CD0005