



BALDOR® • *RELIANCE*

Product Information Packet

EWDM3558T

2HP,1725RPM,3PH,60HZ,145T,3532M,TEFC,F1

Product Detail							
Revision:	G	Status:	PRD/A	Change #:		Proprietary:	No
Type:	AC	Prod Type:	3532M	Elec. Spec:	35WGT866	CD Diagram:	CD0005
Enclosure	TEFC	Mfg Plant:		Mech Spec:	35S585	Layout:	35LYS585
Frame:	145T	Mounting:	F1	Poles:	04	Created Date:	
Base:	RG	Rotation:	R	Insulation:	F	Eff. Date:	12-02-2008
Leads:	9#18	Literature:		Elec. Diagram:		Replaced By:	

Nameplate NP1496L									
CAT.NO.	EWDM3558T								
SPEC.	35S585T866G1								
HP	2								
VOLTS	208-230/460								
AMP	5.7-5.4/2.7								
RPM	1725								
FRAME	145T	HZ			60	PH	3		
SER.F.	1.15	CODE			J	DES	B	CLASS	F
NEMA-NOM-EFF	86.5	PF			82				
RATING	40C AMB-CONT								
CC	010A	USABLE AT 208V			5.7				
DE	6205	ODE			6203				
ENCL	TEFC	SN							

Parts List			
Product ID	Description	Quantity	List Price
SA084798	SA 35S585T866G1	1.000	553.00
RA077955	RA 35S585T866G1	1.000	461.00
S/P107-000-001	SUPER E PROC'S-FS & WS PLTS-POLYREX EM G	1.000	
NS2512A01	INSULATOR, CONDUIT BOX X X	1.000	2.00
35CB3008A01W	35 CB .50 NPT @ 6, MACH WHITE EPOXY	1.000	15.00
35GS1022A03SP	GASKET BOX .125 THK WHITE NEOPRENE	1.000	3.00
51XB1016A07	10-16 X 7/16 HXWSSLD SERTYB	2.000	2.00
11XW1032G06	10-32 X .38, TAPTITE II, HEX WSHR SLTD U	1.000	3.00
35EP3100M04MW	FREP TEFC,"O" DRILLS,NO GRSR, MACH.WHITE	1.000	39.00
HW4032A01	BLUE DRAIN PLUG FOR WASH DOWN MOTORS	3.000	2.00
HW5100A03SP	WAVY WASHER (W1543-017)	1.000	2.00
35EP3101A55MW	SPL PU ENDPLATE W/SEAL SP.#9 (WHITE EPOX	1.000	43.00
HW4032A01	BLUE DRAIN PLUG FOR WASH DOWN MOTORS	3.000	2.00
HW4600B49SP	SEAL 0.938 X 1.624 X 0.250 SINGLE LIP DB	1.000	7.00
XY1032S02	10-32 HEX NUT R.H. S STL	4.000	2.00
51XB1214A16	12-14X1.00 HXWSSLD SERTYB	1.000	2.00
35FH4005A32SP	IEC FH NO GRSR W/3 HOLES - W/AUTOPHERETI	1.000	23.00
11XW1032S06	10-32 X .38, TAPTITE II, HEX WSHR SLTD U	3.000	3.00
35CB4522	35 LIPPED CB LID AUTOPHORETIC	1.000	3.00
35GS1030A02	35 GS FOR CB LID - WHITE NEOPRENE	1.000	6.00
59XW0832S07	TAPTITE II,HEX WSHR UNSLTD SER,410 S.S.,	4.000	2.00
HA1005A05SP	35-309 SLINGER	1.000	2.00
HW4600B32SP	V-RING SLINGER 1.000 X 1.540 X 0.240	1.000	6.00
HW2502D13	SS KEY, 3/16 SQ X 1.375	1.000	2.00

Parts List (continued)			
Product ID	Description	Quantity	List Price
HA7000A01	KEY RETAINER 7/8" DIA SHAFT	1.000	2.00
MJ5001A01	46-665 RED SEALER	0.001	57.00
LB1164	LABEL,WARNING AND DRAIN F/HOSE DOWN	1.000	2.00
10XF0440S02	04-40 X 1/8 TYPE F HEX HD STAINLESS STIC	2.000	2.00
MJ1000A02	GREASE, POLYREX EM EXXON	0.050	10.00
35FN3002A05SP	EXTERNAL FAN, PLASTIC, FOR .637 DIA JOUR	1.000	22.00
MG1025Z20	ACTIVATOR WILKOFAS 060.32	0.010	218.00
MG1025W11	PAINT- 781-101 WILKOFAS WHITE EPOXY	0.017	333.00
HA3100S05	THRUBOLT - 10-32 X 10.125 302 OR 303	4.000	7.00
LB1125C02	SUPER-E (STOCK CTN LABEL SUPER-E WITH FL	1.000	2.00
LC0005	CONN.DIA.,TYPE M,9-LD,DUAL VOLTAGE,REVER	1.000	2.00
NP1496L	STD NP S.S.WASHDOWN W/ WD GRAPHICS LASER	1.000	
PA1000	PACKING GROUP 3500 SHORT	1.000	8.00
LB1357	ENERGY GUIDE LABEL (BOX LABEL)	1.000	2.00

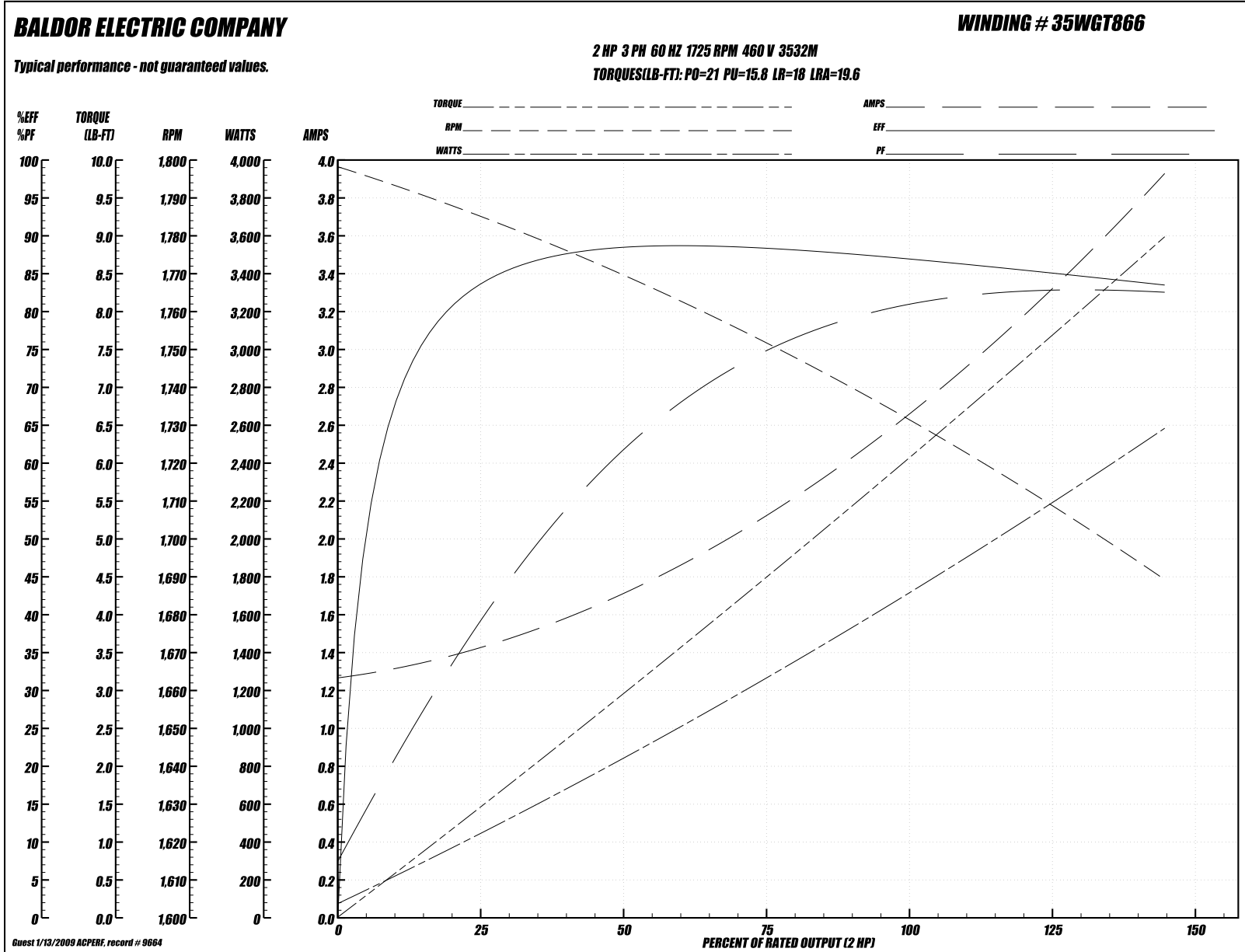
Performance Data at 460V, 60Hz, 2.0HP (Typical performance - Not guaranteed values)
General Characteristics

Full Load Torque:	6.0 LB-FT	Start Configuration:	DOL
No-Load Current:	1.28 Amps	Break-Down Torque:	21.0 LB-FT
Line-line Res. @ 25°C.:	7.693 Ohms A Ph / 0.0 Ohms B Ph	Pull-Up Torque:	15.8 LB-FT
Temp. Rise @ Rated Load:	33°C	Locked-Rotor Torque:	18.0 LB-FT
Temp. Rise @ S.F. Load:	41°C	Starting Current:	19.6 Amps

Load Characteristics

% of Rated Load:	25	50	75	100	125	150	S.F.
Power Factor:	42.0	64.0	76.0	82.0	85.0	86.0	84.0
Efficiency:	83.4	87.9	88.3	87.3	85.6	83.3	86.3
Speed:	1784.0	1769.0	1751.0	1733.0	1713.0	1688.0	1721.0
Line Amperes:	1.41	1.71	2.14	2.65	3.23	3.93	3.0

Performance Graph at 460V, 60Hz, 2.0HP (Typical performance - Not guaranteed values)



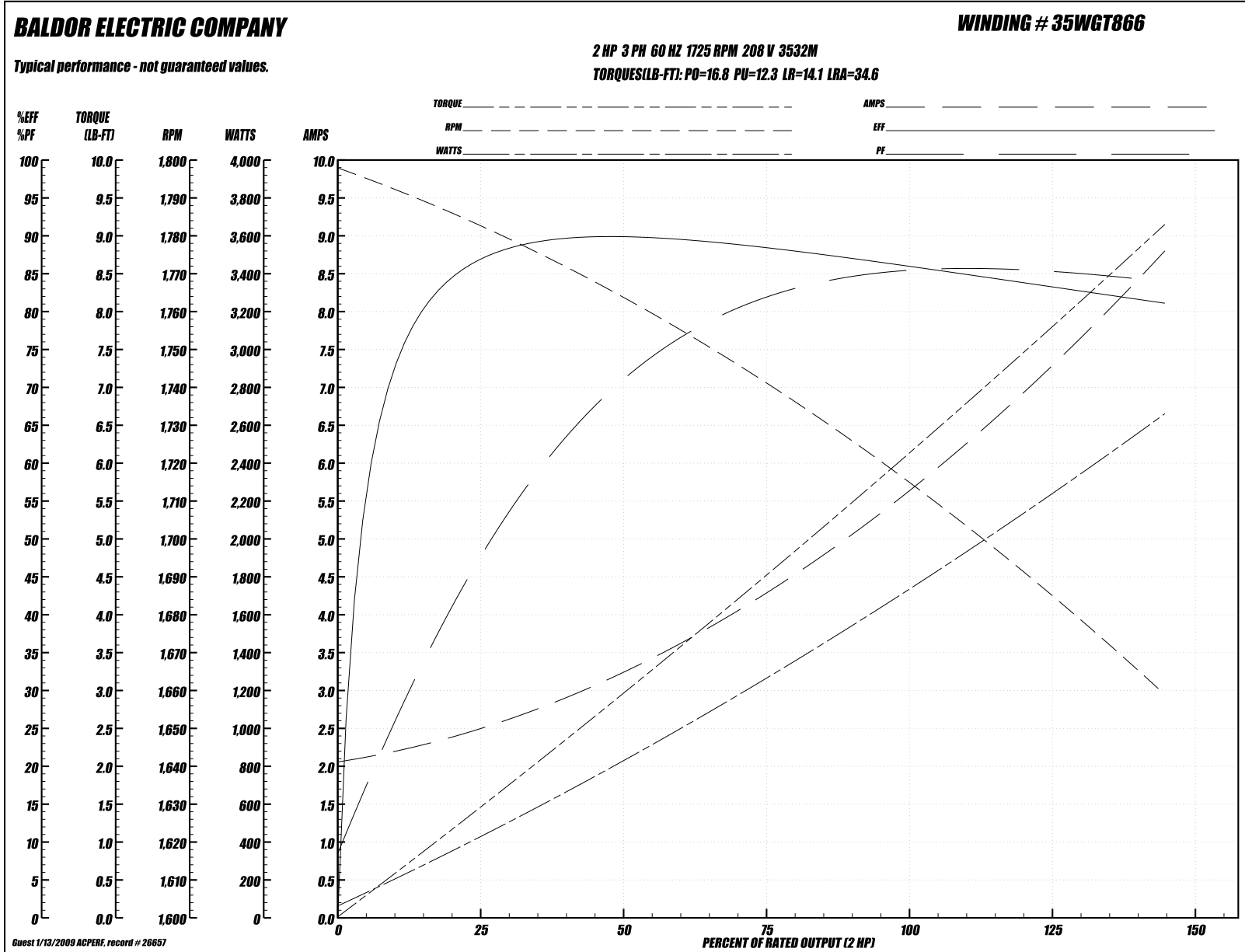
Performance Data at 208V, 60Hz, 2.0HP (Typical performance - Not guaranteed values)
General Characteristics

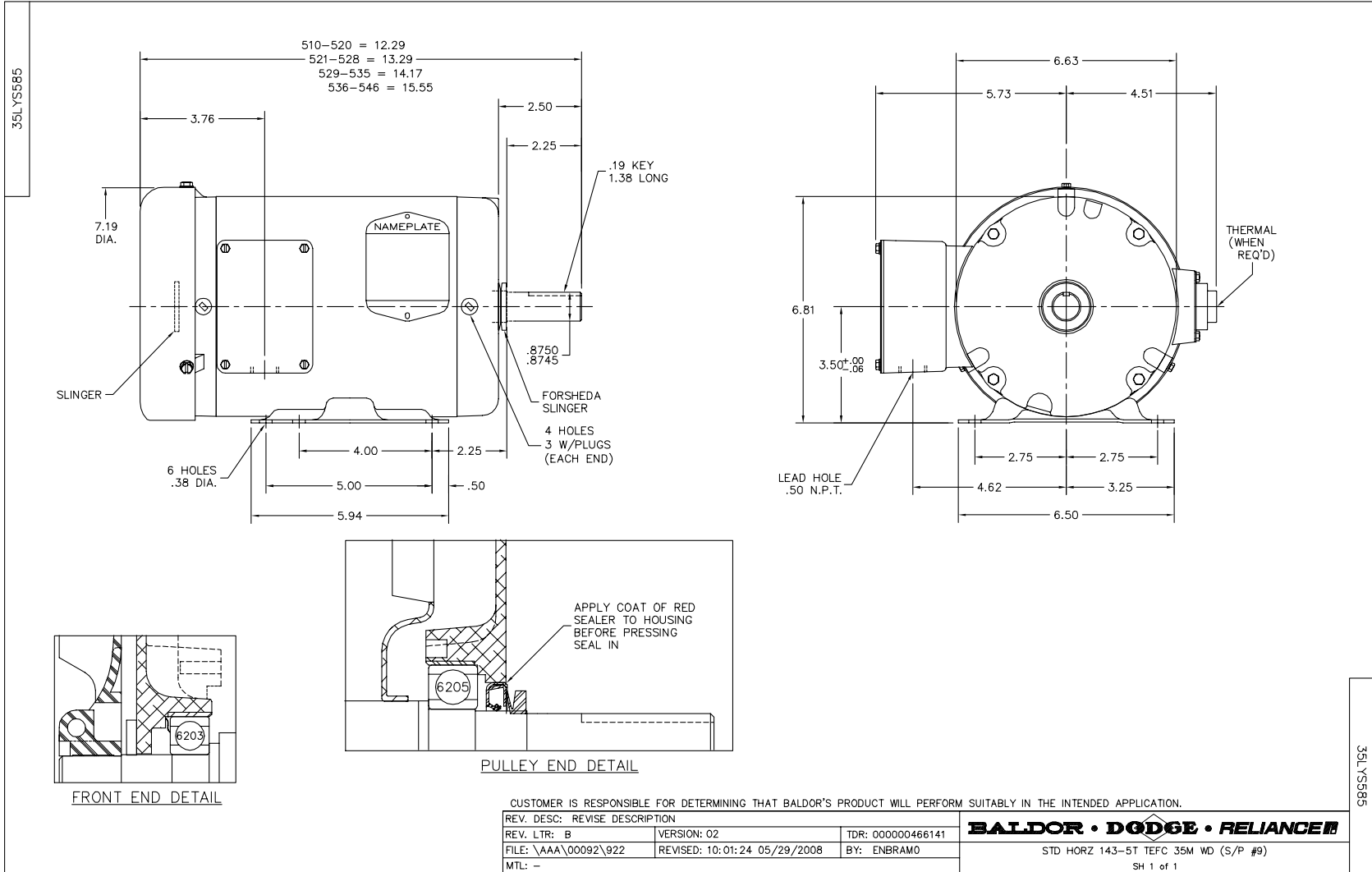
Full Load Torque:	6.05 LB-FT	Start Configuration:	DOL
No-Load Current:	2.09 Amps	Break-Down Torque:	16.8 LB-FT
Line-line Res. @ 25°C.:	2.04 Ohms A Ph / 0.0 Ohms B Ph	Pull-Up Torque:	12.3 LB-FT
Temp. Rise @ Rated Load:	35°C	Locked-Rotor Torque:	14.1 LB-FT
Temp. Rise @ S.F. Load:	45°C	Starting Current:	34.6 Amps

Load Characteristics

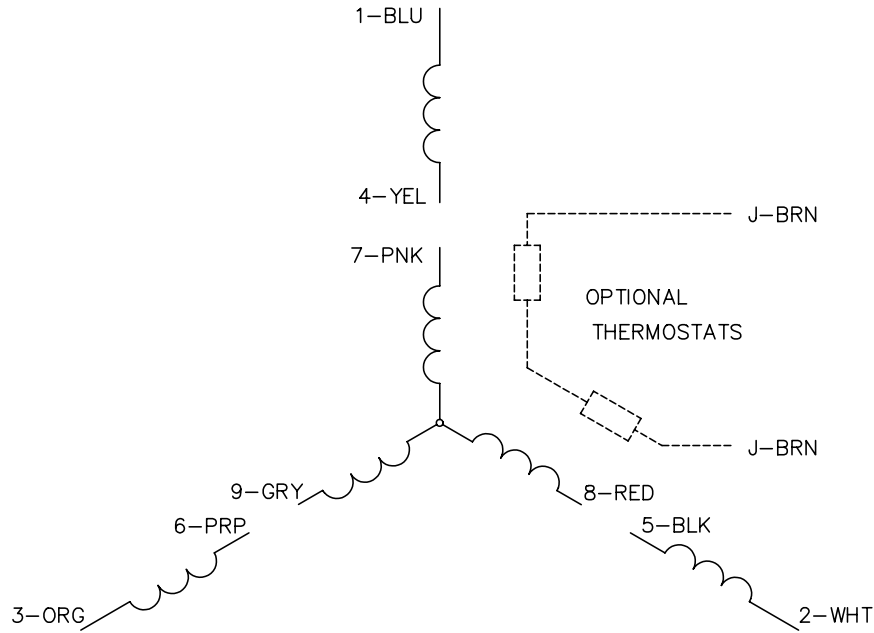
% of Rated Load:	25	50	75	100	125	150	S.F.
Power Factor:	50.0	72.0	81.0	85.0	86.0	84.0	86.0
Efficiency:	86.4	88.9	88.2	86.5	84.0	80.8	85.0
Speed:	1781.0	1763.0	1740.0	1717.0	1691.0	1657.0	1701.0
Line Amperes:	2.45	3.25	4.34	5.6	7.04	8.82	6.46

Performance Graph at 208V, 60Hz, 2.0HP (Typical performance - Not guaranteed values)

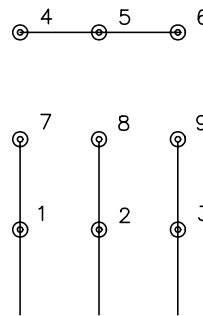




CD0005

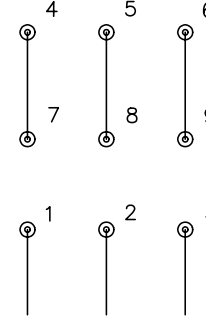


LOW VOLTAGE
(2Y)



LINE

HIGH VOLTAGE
(1Y)



LINE

NOTES:

1. INTERCHANGE ANY TWO LINE LEADS TO REVERSE ROTATION.
2. OPTIONAL THERMOSTATS ARE PROVIDED WHEN SPECIFIED.
3. ACTUAL NUMBER OF INTERNAL PARALLEL CIRCUITS MAY BE A MULTIPLE OF THOSE SHOWN ABOVE.
4. LEAD COLORS ARE OPTIONAL. LEADS MUST ALWAYS BE NUMBERED AS SHOWN.

REV. DESC: REVISE TO SHOW OPTIONAL COLORS			
REV. LTR: E	BY: JLP	REVISED: 01/19/99 10:15	TDR: 0171435
900000		FILE: AAA00005140	MDL: -
		MTL: -	

BALDOR ELECTRIC Co.

3PH, DV, 9 LEADS

CD0005