



# **BALDOR® • *RELIANCE***

## **Product Information Packet**

### **H3M9205**

**.75HP,1725RPM,3PH,60HZ,56,3420M,OPEN,F1**

Product Detail							
Revision:	G	Status:	PRD/A	Change #:		Proprietary:	No
Type:	AC	Prod Type:	3420M	Elec. Spec:	34WG0883	CD Diagram:	CD0005
Enclosure	OPEN	Mfg Plant:		Mech Spec:	34J283	Layout:	34LYJ283
Frame:	56	Mounting:	F3	Poles:	04	Created Date:	
Base:	RG	Rotation:	R	Insulation:	B	Eff. Date:	08-15-2008
Leads:	9#18	Literature:		Elec. Diagram:		Replaced By:	

**Nameplate NP1889A01**

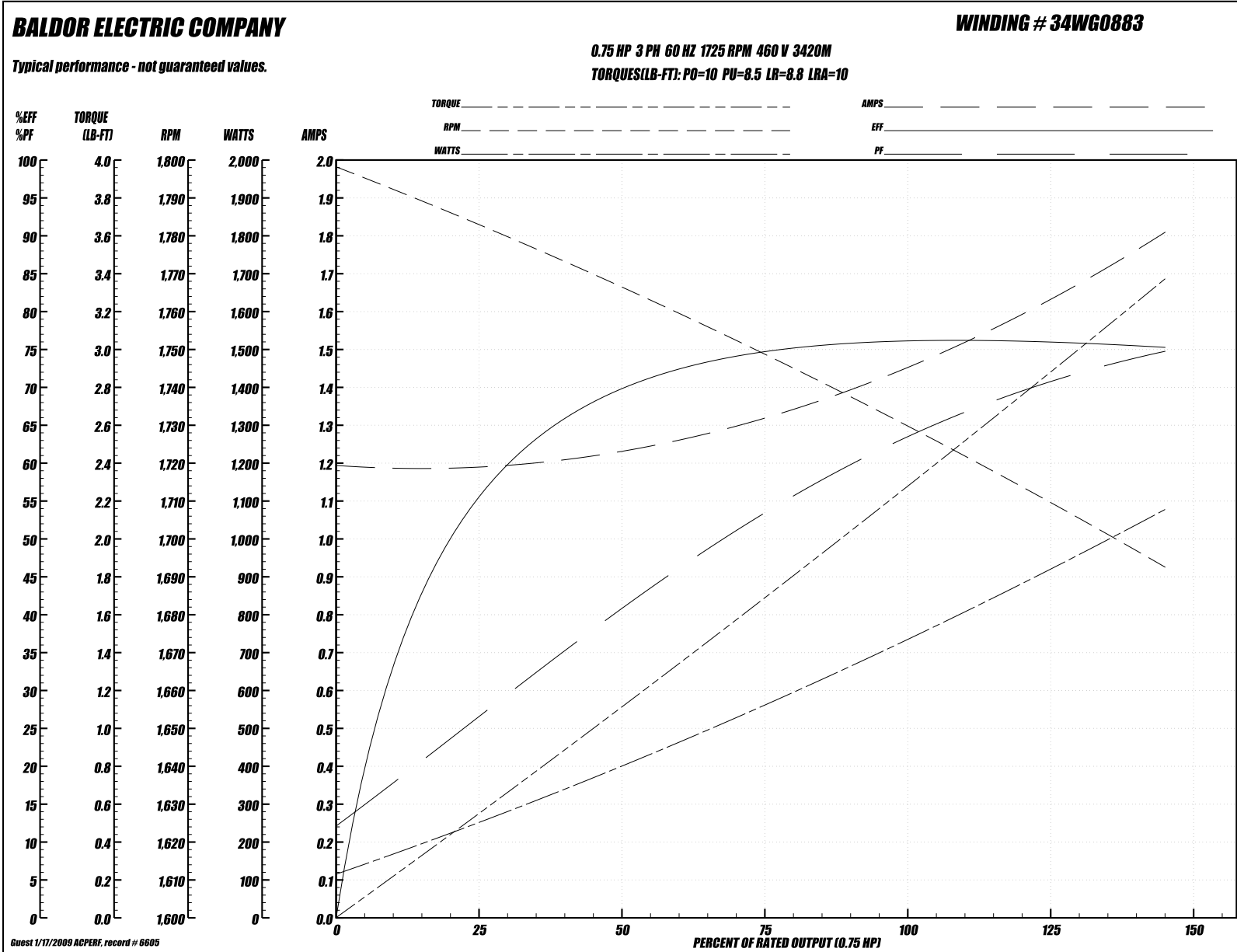
CAT.NO.	H3M9205						
SPEC.	34J283-0883						
HP	.75						
VOLTS	208-230/460						
AMPS	3.2-3/1.5						
RPM	1725						
FRAME	56	HZ	60	PH	3		
SER.F.	1.25	CODE	K	DES	B	CL	B
NEMA-NOM-EFF	75.5	PF	60				
RATING	40C AMB-CONT						
CC		USABLE AT 200V	3.6				
DE	6203	ODE	6203				
AUTO		MANUAL		NONE			
ENCL	OPEN	SN					
BLANK	SFA 3.6-3.4/1.7						

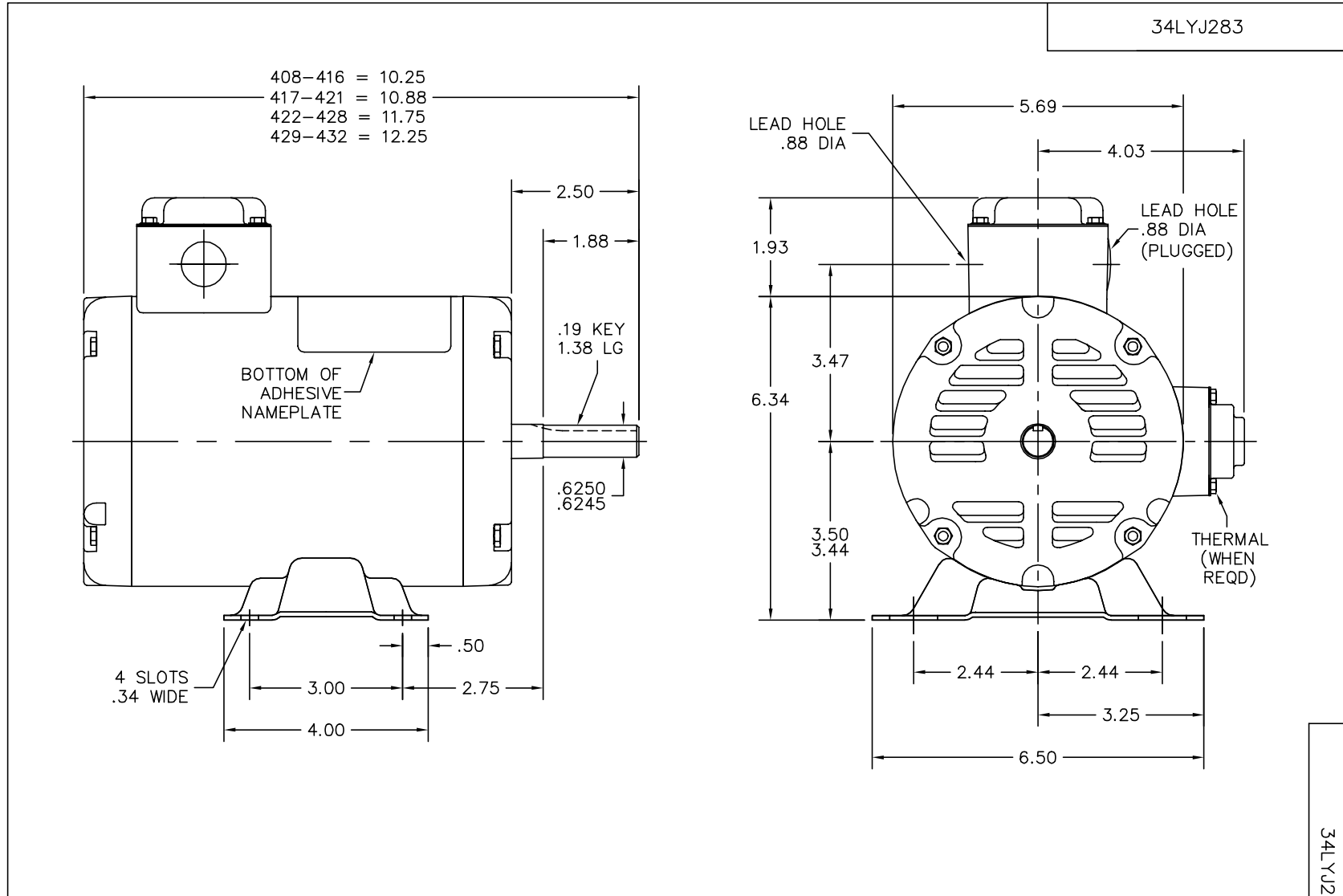
<b>Parts List</b>			
<b>Product ID</b>	<b>Description</b>	<b>Quantity</b>	<b>List Price</b>
SA080759	SA 34J283-0883	1.000	166.00
RA074151	RA 34J283-0883	1.000	139.00
NS2512A01	INSULATOR, CONDUIT BOX X X	1.000	2.00
WD4100A01	DP-875 HEYCO PLUG OR 62MP0875 MICRO PLAS	1.000	2.00
34CB3002A05	CB W/.88 DIA @ 12 & .88 DIA @ 6	1.000	14.00
51XB1016A07	10-16 X 7/16 HXWSSLD SERTYB	2.000	2.00
11XW1032G06	10-32 X .38, TAPTITE II, HEX WSHR SLTD U	1.000	3.00
34EP3200A01SP	FR ENDPLATE, MACH	1.000	37.00
HW5100A03SP	WAVY WASHER (W1543-017)	1.000	2.00
34EP3200A02SP	FR/PU ENDPLATE, MACH	1.000	37.00
XY1032A02	10-32 HEX NUT DIRECTIONAL SERRATION	4.000	2.00
34CB4517	CB LID 4 MTG HOLES .22 DIA STAMPED, FOR	1.000	5.00
51XW0832A07	8-32 X .44, TAPTITE II, HEX WSHR SLTD SE	4.000	2.00
HW2501D13SP	KEY, 3/16 SQ X 1.375	1.000	2.00
HA7000A04	KEY RETAINER 0.625 DIA SHAFTS	1.000	2.00
MG1000G55	682.62 LACQUER LIGHT GRAY LHAPS	0.014	61.00
HA3100A44	THRUBOLT 10-32 X 8.000	4.000	2.00
LB5040	INSTRUCTION TAG, AC & DC	1.000	2.00
LB1125C01	STD (STOCK) CARTON LABEL BALDOR WITH FLA	1.000	2.00
NP1889A01	NP LABEL W/CD0005 (FOR HVAC MOTOR)	1.000	
34PA1005	PACKING GROUP, BALDOR	1.000	10.00

**Performance Data at 460V, 60Hz, 0.75HP (Typical performance - Not guaranteed values)**

<b>General Characteristics</b>							
<b>Full Load Torque:</b>	2.25 LB-FT			<b>Start Configuration:</b>	DOL		
<b>No-Load Current:</b>	1.2 Amps			<b>Break-Down Torque:</b>	10.0 LB-FT		
<b>Line-line Res. @ 25°C.:</b>	17.68 Ohms A Ph / 0.0 Ohms B Ph			<b>Pull-Up Torque:</b>	8.5 LB-FT		
<b>Temp. Rise @ Rated Load:</b>	74°C			<b>Locked-Rotor Torque:</b>	8.8 LB-FT		
<b>Temp. Rise @ S.F. Load:</b>	91°C			<b>Starting Current:</b>	10.0 Amps		
<b>Load Characteristics</b>							
<b>% of Rated Load:</b>	<b>25</b>	<b>50</b>	<b>75</b>	<b>100</b>	<b>125</b>	<b>150</b>	<b>S.F.</b>
<b>Power Factor:</b>	28.0	42.0	55.0	64.0	71.0	76.0	71.0
<b>Efficiency:</b>	56.1	69.7	74.7	76.2	76.1	75.2	76.1
<b>Speed:</b>	1783.0	1766.0	1749.0	1731.0	1711.0	1693.0	1711.0
<b>Line Amperes:</b>	1.2	1.2	1.3	1.5	1.6	1.8	1.6

Performance Graph at 460V, 60Hz, 0.75HP (Typical performance - Not guaranteed values)





CUSTOMER IS RESPONSIBLE FOR DETERMINING THAT BALDOR'S PRODUCT WILL PERFORM SUITABLY IN THE INTENDED APPLICATION.

REV. DESC: FAN WAS 34FN4003A03 NOW 34FN5003A03

REV. LTR: C      VERSION: 01      TDR: 000000474067

FILE: \AAA\00090\001      REVISED: 09: 40: 25 08/15/2008

MTL: -      BY: ENDOUSO

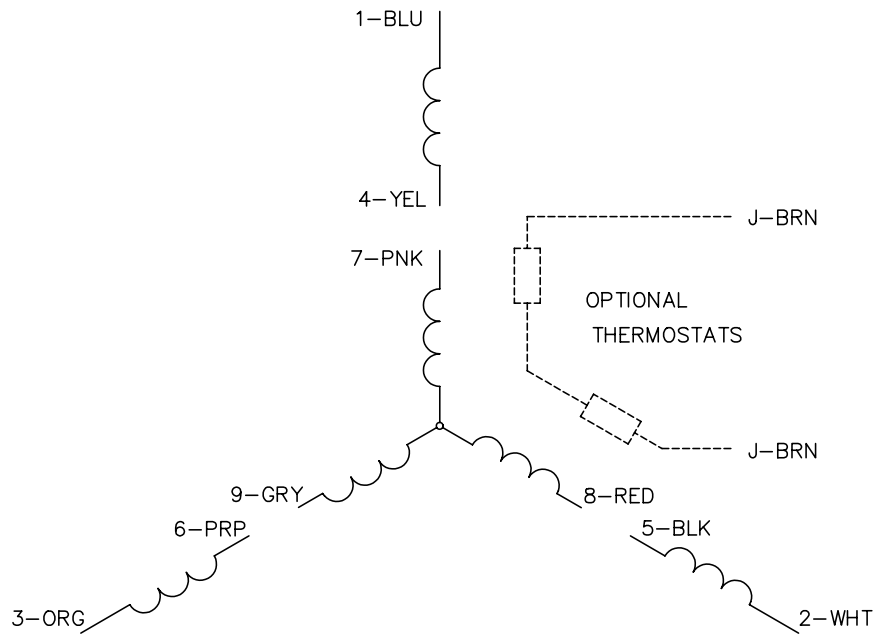


HORZ 34M NEMA 56 OPEN HVAC W/KO & NAMEPLATE AT 12 O'CLOCK

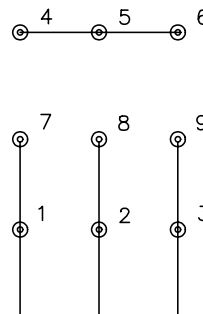
SH 1 of 1

34LYJ283

CD0005

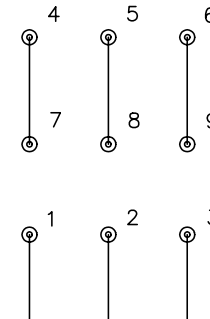


LOW VOLTAGE  
(2Y)



LINE

HIGH VOLTAGE  
(1Y)



LINE

NOTES:

1. INTERCHANGE ANY TWO LINE LEADS TO REVERSE ROTATION.
2. OPTIONAL THERMOSTATS ARE PROVIDED WHEN SPECIFIED.
3. ACTUAL NUMBER OF INTERNAL PARALLEL CIRCUITS MAY BE A MULTIPLE OF THOSE SHOWN ABOVE.
4. LEAD COLORS ARE OPTIONAL. LEADS MUST ALWAYS BE NUMBERED AS SHOWN.

REV. DESC: REVISE TO SHOW OPTIONAL COLORS			
REV. LTR: E	BY: JLP	REVISED: 01/19/99 10:15	TDR: 0171435
900000		FILE: AAA00005140	MDL: -
		MTL: -	

**BALDOR ELECTRIC Co.**

3PH, DV, 9 LEADS

CD0005