



BALDOR® • *RELIANCE*

Product Information Packet

HM9242T

25HP,1760RPM,3PH,60HZ,284T,3942M,OPSB,F1

Product Detail							
Revision:	F	Status:	PRD/A	Change #:		Proprietary:	No
Type:	AC	Prod Type:	3942M	Elec. Spec:	39WGX114	CD Diagram:	CD0005
Enclosure	OPSB	Mfg Plant:		Mech Spec:	39P090	Layout:	39LYP090
Frame:	284T	Mounting:	F1	Poles:	04	Created Date:	
Base:	RG	Rotation:	R	Insulation:	B	Eff. Date:	03-20-2006
Leads:	9#10	Literature:		Elec. Diagram:		Replaced By:	

Nameplate NP1888A01

CAT.NO.	HM9242T						
SPEC.	39P090X114H1						
HP	25						
VOLTS	230/460						
AMPS	60/30						
RPM	1760						
FRAME	284T	HZ	60	PH	3		
SER.F.	1.15	CODE	G	DES	B	CL	B
NEMA-NOM-EFF	91.7	PF	85				
RATING	40C AMB-CONT						
CC	010A	USABLE AT 208V	65				
DE	6311	ODE	6208				
AUTO	N	MANUAL		NONE	Y		
ENCL	OPSB	SN					
BLANK							

Parts List			
Product ID	Description	Quantity	List Price
SA075807	SA 39P090X114H1	1.000	991.00
RA069441	RA 39P090X114H1	1.000	826.00
S/P101-000-003	EPACT PROC-ZK 280FR & UP,LARGE KOBX,POLY	1.000	
HA6361A01	LIFTING LUG FOR 37, 39 & 40 FRAME (AUTOP	2.000	2.00
39CB4000A01	CONDUIT BOX 39, STAMPED	1.000	34.00
19XW2520A08	SCREW,1/4-20X1/2 TAPTITE-II OR ROLOC 91	2.000	2.00
HW1001A25	LOCKWASHER 1/4, ZINC PLT .493 OD, .255 I	2.000	2.00
WD1000B16	KPA-4C BURNDY TERMINAL	1.000	4.00
39EP3200A01SP	FR/PU ENDPLATE, MACH	1.000	111.00
HW5100A08	W3118-035 WVY WSHR (WB)	1.000	2.00
39EP3202A01	ENDPLATE MACH	1.000	101.00
XY3816A12	3/8-16 FINISHED NUT	8.000	2.00
39CB4500A01	CONDUIT BOX LID 39, STAMPED, AUTOPHORETI	1.000	34.00
51XF1032A08	10/32X1/2 HXWSHR HD, SL, TYPE F ,SERATED	2.000	2.00
HW2501H28	KEY, 1/2 SQ X 3.250	1.000	2.00
39AD2002A01	BAFFLE PLATE 39 OPEN, SLOTTED BAND MTRS	1.000	13.00
HW4500A20	1/8NPT SL PIPE PLUG	2.000	2.00
MJ1000A02	GREASE, POLYREX EM EXXON	0.030	10.00
39AD2002A01	BAFFLE PLATE 39 OPEN, SLOTTED BAND MTRS	1.000	13.00
HW4500A20	1/8NPT SL PIPE PLUG	2.000	2.00
HA3159A07	THRUBOLT .38-16 X 17.75LGSTUD	4.000	6.00
MG1000G55	682.62 LACQUER LIGHT GRAY LHAPS	0.050	61.00
LB1125C04	STD-E (STOCK CTN LABEL STD-E WITH FLAG)	4.000	2.00
LB5040	INSTRUCTION TAG, AC & DC	1.000	2.00

Parts List (continued)			
Product ID	Description	Quantity	List Price
NP1888A01	NP LABEL W/CD0005 (FOR HVAC MOTOR)	1.000	
40PA1000	PACKAGING GROUP	1.000	67.00

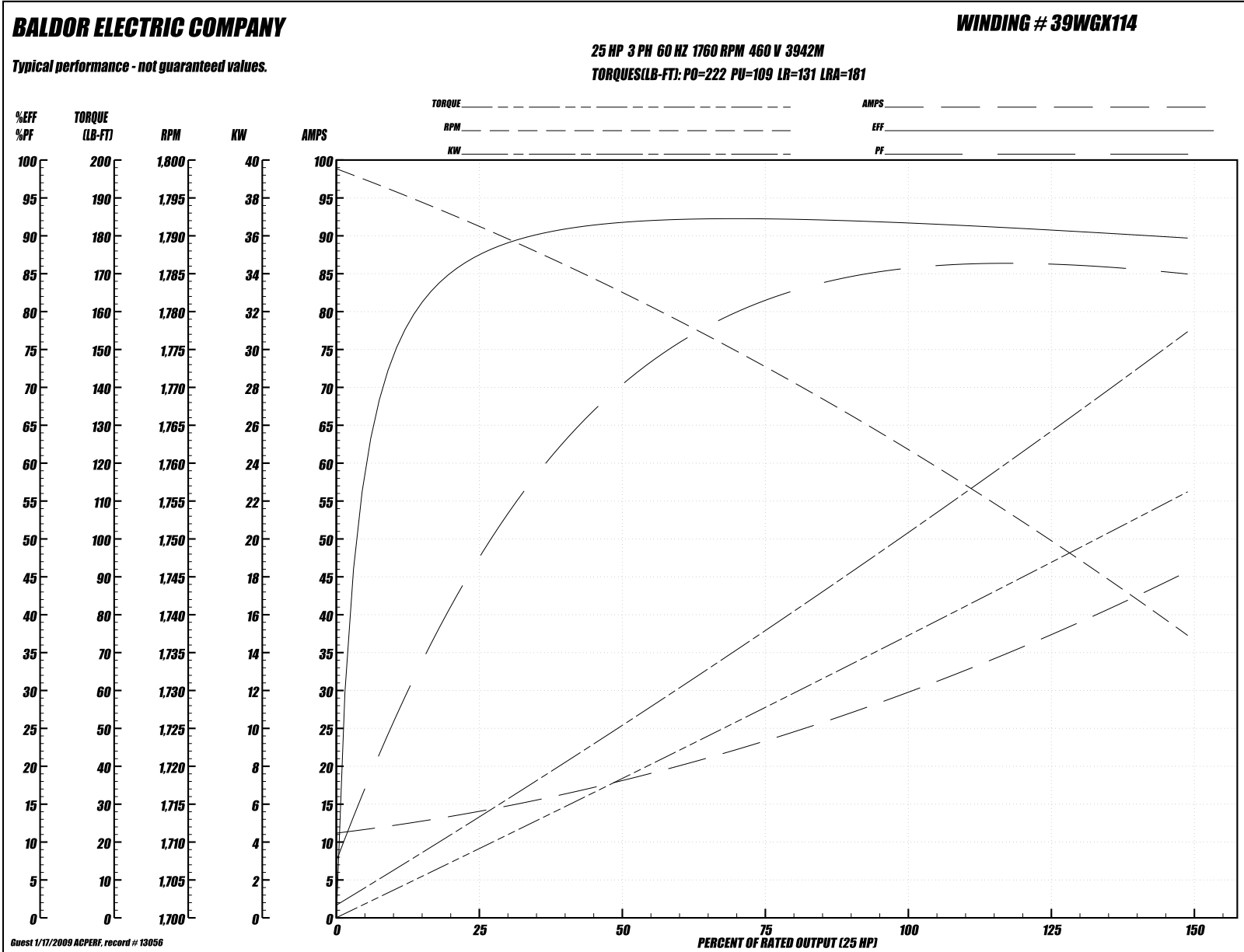
Performance Data at 460V, 60Hz, 25.0HP (Typical performance - Not guaranteed values)
General Characteristics

Full Load Torque:	75.0 LB-FT	Start Configuration:	DOL
No-Load Current:	11.6 Amps	Break-Down Torque:	222.0 LB-FT
Line-line Res. @ 25°C.:	0.432 Ohms A Ph / 0.0 Ohms B Ph	Pull-Up Torque:	109.0 LB-FT
Temp. Rise @ Rated Load:	45°C	Locked-Rotor Torque:	131.0 LB-FT
Temp. Rise @ S.F. Load:	55°C	Starting Current:	181.0 Amps

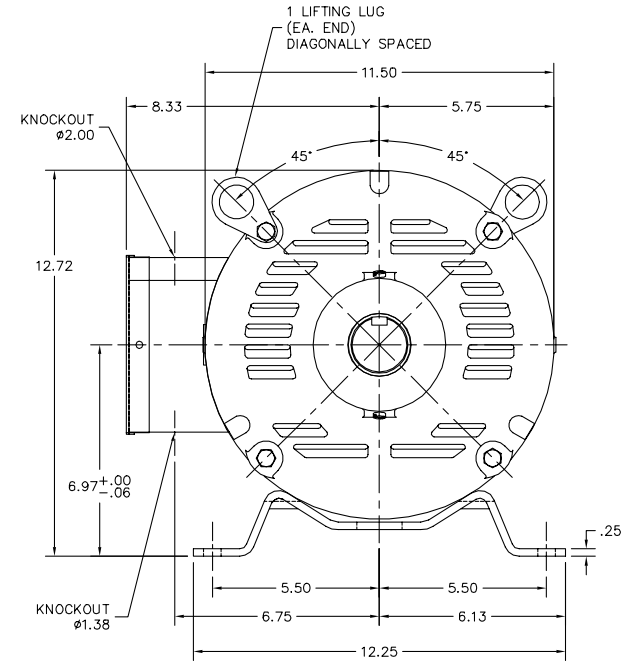
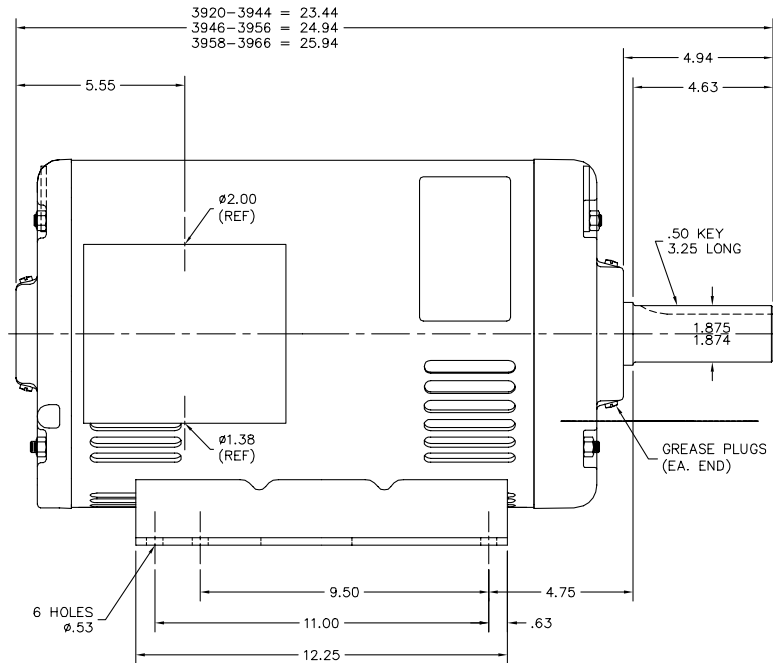
Load Characteristics

% of Rated Load:	25	50	75	100	125	150	S.F.
Power Factor:	50.0	72.0	81.0	85.0	86.0	86.0	86.0
Efficiency:	87.5	91.5	92.2	91.8	90.9	89.6	91.3
Speed:	1791.0	1782.0	1772.0	1762.0	1750.0	1737.0	1755.0
Line Amperes:	13.6	18.0	23.7	30.3	37.6	45.4	34.68

Performance Graph at 460V, 60Hz, 25.0HP (Typical performance - Not guaranteed values)



39LYP090



CUSTOMER IS RESPONSIBLE FOR DETERMINING THAT MOTOR PERFORMANCE IS SUITABLE IN THE APPLICATION.

REV. DESC: OPEN IN ACAD SO THE REV WILL MATCH BUS		
REV. LTR: B	VERSION: 02	TDR: 000000425504
FILE: \AAA\00079\740	REVISED: 08:05:35 03/19/2007	BY: ENBREWO
MTL: -		

BALDOR ELECTRIC Co.

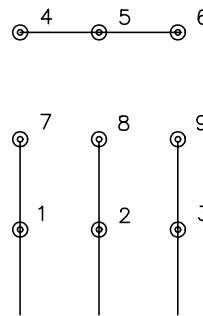
HORZ OPSB 284-6T - HVAC MOTOR

39LYP090

CD0005

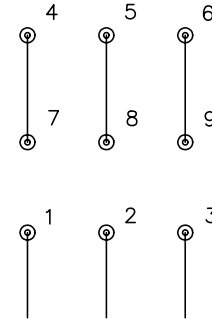


LOW VOLTAGE
(2Y)



LINE

HIGH VOLTAGE
(1Y)



LINE

NOTES:

1. INTERCHANGE ANY TWO LINE LEADS TO REVERSE ROTATION.
2. OPTIONAL THERMOSTATS ARE PROVIDED WHEN SPECIFIED.
3. ACTUAL NUMBER OF INTERNAL PARALLEL CIRCUITS MAY BE A MULTIPLE OF THOSE SHOWN ABOVE.
4. LEAD COLORS ARE OPTIONAL. LEADS MUST ALWAYS BE NUMBERED AS SHOWN.

REV. DESC: REVISE TO SHOW OPTIONAL COLORS			
REV. LTR: E	BY: JLP	REVISED: 01/19/99 10:15	TDR: 0171435
900000		FILE: AAA00005140	MDL: -
		MTL: -	

BALDOR ELECTRIC Co.

3PH, DV, 9 LEADS

CD0005