



BALDOR® • *RELIANCE*

Product Information Packet

HPM3615T

5HP,1750RPM,3PH,60HZ,184,TYZ,3633M,TEFC

Product Detail							
Revision:	D	Status:	PRD/A	Change #:		Proprietary:	No
Type:	AC	Prod Type:	3633M	Elec. Spec:	36WGT846	CD Diagram:	CD0005
Enclosure	TEFC	Mfg Plant:		Mech Spec:	36L541	Layout:	36LYL541
Frame:	184TYZ	Mounting:	F3	Poles:	04	Created Date:	10-06-2005
Base:	RG	Rotation:	R	Insulation:	F	Eff. Date:	03-06-2007
Leads:	9#16	Literature:		Elec. Diagram:		Replaced By:	

Nameplate NP1256L									
CAT.NO.	HPM3615T								
SPEC.	36L541T846H1								
HP	5								
VOLTS	208-230/460								
AMP	15.4-14.2/7.1								
RPM	1750								
FRAME	184TYZ	HZ	60	PH	3				
SER.F.	1.15	CODE	K	DES	B	CLASS	F		
NEMA-NOM-EFF	87.5	PF	75						
RATING	40C AMB-CONT								
CC			USABLE AT 208V						
DE	6208	ODE	6205						
ENCL	TEFC	SN							

Parts List			
Product ID	Description	Quantity	List Price
SA134170	SA 36L541T846H1	1.000	425.00
RA123998	RA 36L541T846H1	1.000	354.00
36FN3000C01SP	FAN EXTERNAL,PLASTIC, 5.25 OD, .912/.907	1.000	15.00
S/P101-000-000	EPACT PROCEDURES-FS PLANT-POLYREX EM, NO	1.000	
36CB3004	36 CB CASTING W/1.09 DIA LEAD HOLE @ 6:0	1.000	23.00
36GS1000SP	GASKET-CONDUIT BOX, .06 THICK #SV-330 LE	1.000	6.00
51XB1016A07	10-16 X 7/16 HXWSSLD SERTYB	2.000	3.00
11XW1032G06	10-32 X .38, TAPTITE II, HEX WSHR SLTD U	1.000	4.00
36EP3104A02	FREP MACH W/O GRSR, RAISED FH PADS	1.000	59.00
HW5100A05	WVY WSHR F/205 & 304 BRGS	1.000	3.00
36EP1903A10	SPL 4-BOLT PUMP MTG ENDPLATE -ENCL- 208	1.000	295.00
XY2520A12	1/4-20 HEX NUT, DIRECTIONAL SERRATIONS	4.000	1.00
51XB1214A16	12-14X1.00 HXWSSLD SERTYB	1.000	3.00
36FH4009A101	IEC FH NO GREASER, W/AUTOPHERETIC PRIMER	1.000	20.00
51XW1032A06	10-32 X .38, TAPTITE II, HEX WSHR SLTD S	3.000	4.00
36CB4516	36 LIPPED CB LID	1.000	3.00
37GS1001SP	GASKET, CONDUIT BOX LID, .06 THICK LEXID	1.000	4.00
51XW0832A07	8-32 X .44, TAPTITE II, HEX WSHR SLTD SE	4.000	3.00
10XF0440S02	04-40 X 1/8 TYPE F HEX HD STAINLESS STIC	2.000	4.00
MJ1000A02	GREASE, POLYREX EM EXXON	0.050	12.00
MG1000G27	PAINT- S9282E CHARCOAL GREY	0.022	4,000.00
HA3101A45	THRUBOLT- 1/4-20 X 11.125 X	4.000	3.00
LB1125C04	STD-E (STOCK CTN LABEL STD-E WITH FLAG)	1.000	3.00
LC0005E01	CONN.DIA./WARNING LABEL (LC0005/LB1119)	1.000	3.00

Parts List (continued)			
Product ID	Description	Quantity	List Price
NP1256L	NP STD LASER ENGRAVED, UL CSA CC, W/O TH	1.000	4.00
36PA1000	PACK GROUP W/LB5001	1.000	21.00

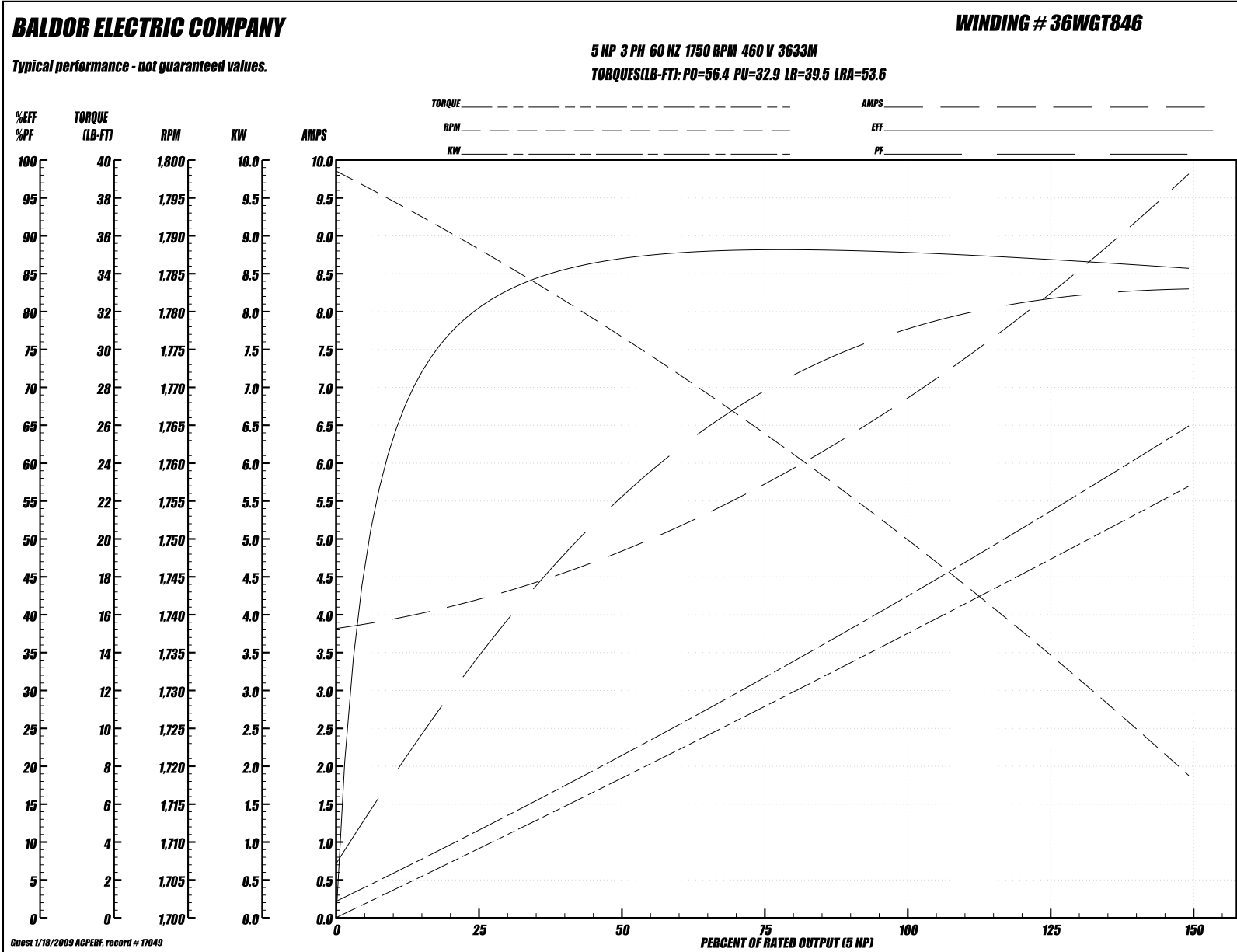
Performance Data at 460V, 60Hz, 5.0HP (Typical performance - Not guaranteed values)
General Characteristics

Full Load Torque:	14.9 LB-FT	Start Configuration:	DOL
No-Load Current:	3.89 Amps	Break-Down Torque:	56.4 LB-FT
Line-line Res. @ 25°C.:	2.47 Ohms A Ph / 0.0 Ohms B Ph	Pull-Up Torque:	32.9 LB-FT
Temp. Rise @ Rated Load:	82°C	Locked-Rotor Torque:	39.5 LB-FT
Temp. Rise @ S.F. Load:	99°C	Starting Current:	53.6 Amps

Load Characteristics

% of Rated Load:	25	50	75	100	125	150	S.F.
Power Factor:	35.0	57.0	69.0	77.0	81.0	84.0	79.0
Efficiency:	80.1	87.0	88.3	88.1	87.2	85.8	87.6
Speed:	1788.0	1776.0	1764.0	1750.0	1736.0	1718.0	1742.0
Line Amperes:	4.11	4.79	5.76	6.89	8.27	9.77	7.72

Performance Graph at 460V, 60Hz, 5.0HP (Typical performance - Not guaranteed values)



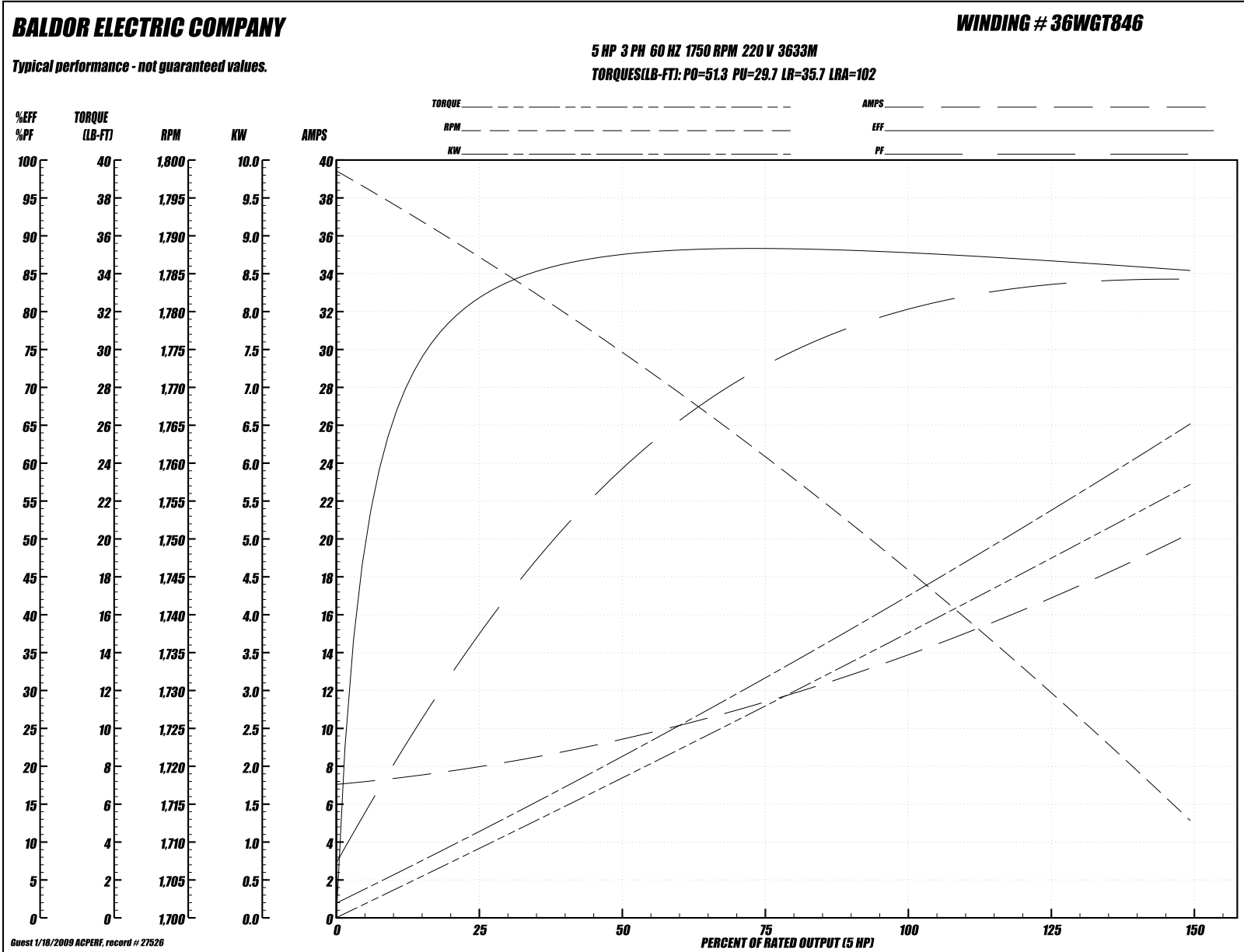
Performance Data at 220V, 60Hz, 5.0HP (Typical performance - Not guaranteed values)
General Characteristics

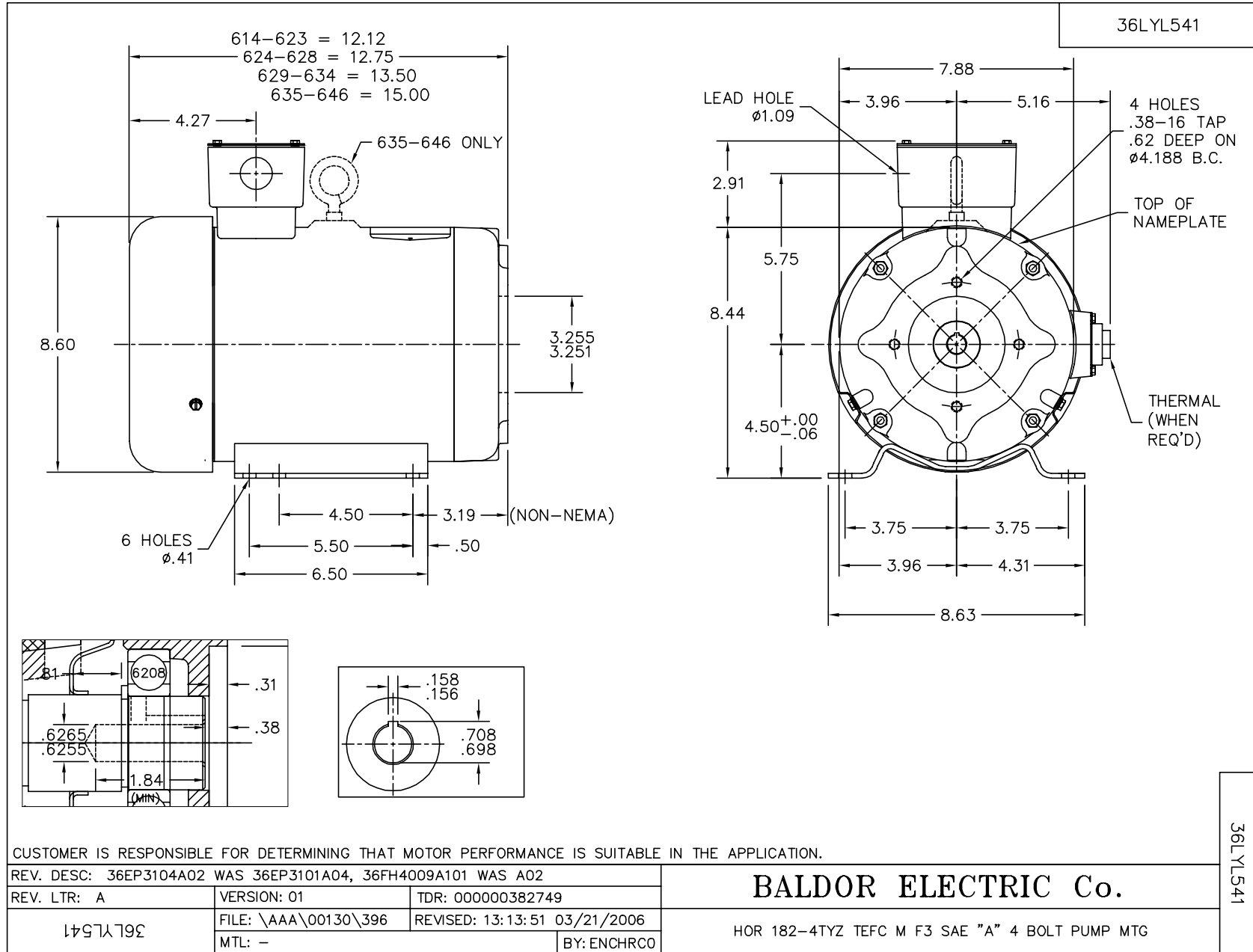
Full Load Torque:	14.9 LB-FT	Start Configuration:	DOL
No-Load Current:	7.23 Amps	Break-Down Torque:	51.3 LB-FT
Line-line Res. @ 25°C.:	0.625 Ohms A Ph / 0.0 Ohms B Ph	Pull-Up Torque:	29.7 LB-FT
Temp. Rise @ Rated Load:	82°C	Locked-Rotor Torque:	35.7 LB-FT
Temp. Rise @ S.F. Load:	99°C	Starting Current:	102.0 Amps

Load Characteristics

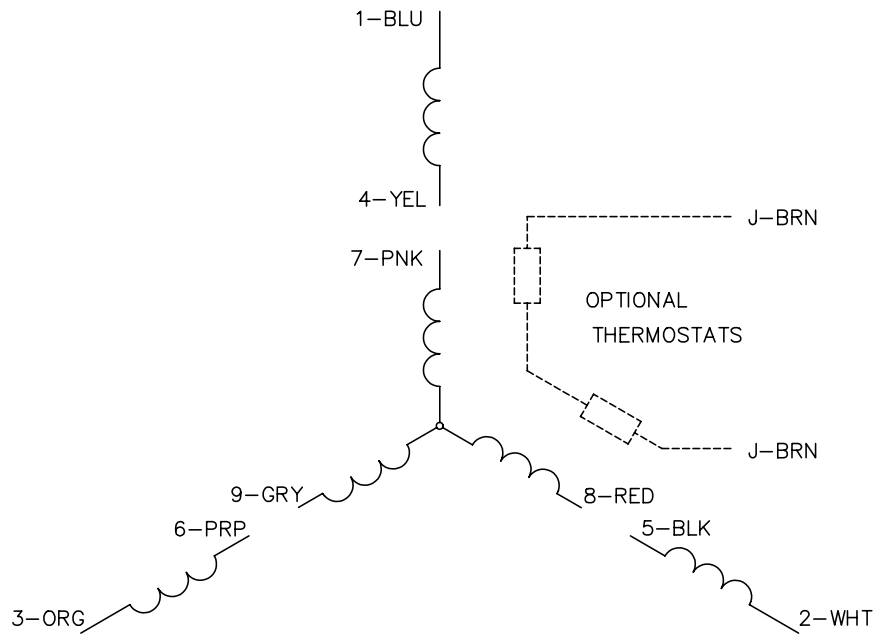
% of Rated Load:	25	50	75	100	125	150	S.F.
Power Factor:	38.0	61.0	73.0	80.0	83.0	85.0	82.0
Efficiency:	81.5	87.4	88.2	87.6	87.2	85.2	87.4
Speed:	1787.0	1774.0	1761.0	1746.0	1731.0	1712.0	1737.0
Line Amperes:	7.75	9.29	11.4	14.1	16.9	20.2	15.7

Performance Graph at 220V, 60Hz, 5.0HP (Typical performance - Not guaranteed values)

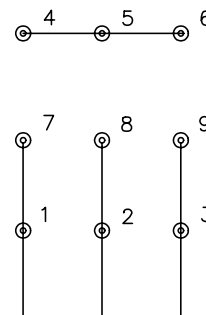




CD0005

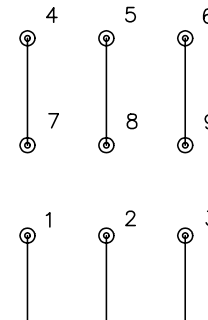


LOW VOLTAGE
(2Y)



LINE

HIGH VOLTAGE
(1Y)



LINE

NOTES:

1. INTERCHANGE ANY TWO LINE LEADS TO REVERSE ROTATION.
2. OPTIONAL THERMOSTATS ARE PROVIDED WHEN SPECIFIED.
3. ACTUAL NUMBER OF INTERNAL PARALLEL CIRCUITS MAY BE A MULTIPLE OF THOSE SHOWN ABOVE.
4. LEAD COLORS ARE OPTIONAL. LEADS MUST ALWAYS BE NUMBERED AS SHOWN.

REV. DESC: REVISE TO SHOW OPTIONAL COLORS			
REV. LTR: E	BY: JLP	REVISED: 01/19/99 10:15	TDR: 0171435
90000		FILE: AAA00005140	MDL: -
		MTL: -	

BALDOR ELECTRIC Co.

3PH, DV, 9 LEADS

CD0005