



BALDOR® • *RELIANCE*

Product Information Packet

JMM3554T

1.5HP,1725RPM,3PH,60HZ,145JM,3520M,TEFC

Product Detail							
Revision:	Y	Status:	PRD/A	Change #:		Proprietary:	No
Type:	AC	Prod Type:	3520M	Elec. Spec:	35WGW206	CD Diagram:	CD0005
Enclosure	TEFC	Mfg Plant:		Mech Spec:	35M019	Layout:	35LYM019
Frame:	145JM	Mounting:	F1	Poles:	04	Created Date:	
Base:	RG	Rotation:	R	Insulation:	B	Eff. Date:	12-08-2008
Leads:	9#18	Literature:		Elec. Diagram:		Replaced By:	

Nameplate NP1256L									
CAT.NO.	JMM3554T								
SPEC.	35M19W206								
HP	1.5								
VOLTS	208-230/460								
AMP	5.3-5/2.5								
RPM	1725								
FRAME	145JM	HZ	60	PH	3				
SER.F.	1.15	CODE	K	DES	B	CLASS	B		
NEMA-NOM-EFF	78.5	PF	72						
RATING	40C AMB-CONT								
CC		USABLE AT 208V	5.3						
DE	6206	ODE	6203						
ENCL	TEFC	SN							

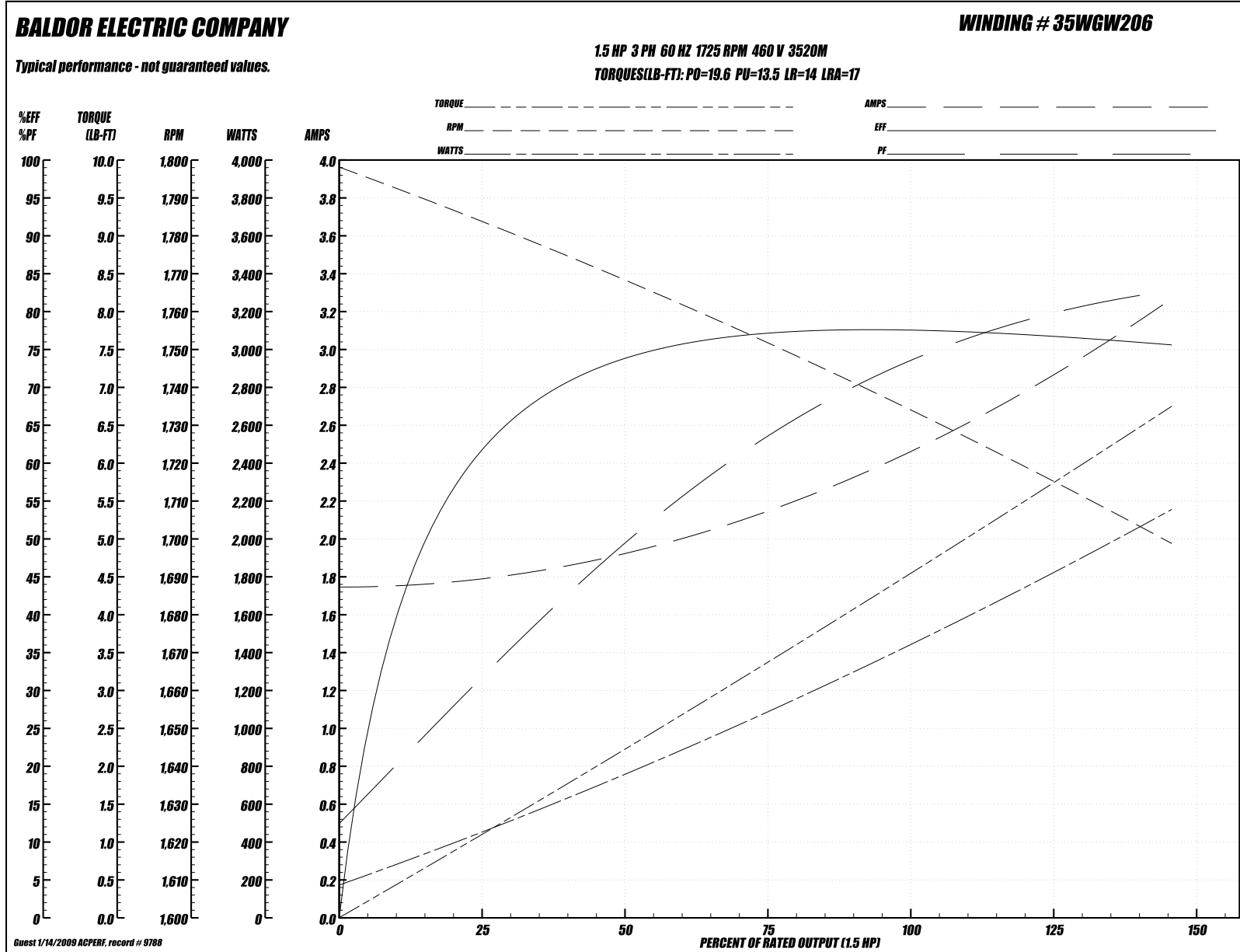
Parts List			
Product ID	Description	Quantity	List Price
SA027594	SA 35M19W206	1.000	295.00
RA023642	RA 35M19W206	1.000	246.00
NS2512A01	INSULATOR, CONDUIT BOX X X	1.000	2.00
35CB3007	35 CB CASTING W/.88 DIA. LEAD HOLE	1.000	27.00
36GS1000SP	GASKET-CONDUIT BOX, .06 THICK #SV-330 LE	1.000	5.00
51XB1016A07	10-16 X 7/16 HXWSSLD SERTYB	2.000	2.00
11XW1032G06	10-32 X .38, TAPTITE II, HEX WSHR SLTD U	1.000	3.00
35EP3100M07	FREP TEFC 203BRG,GRSR,RLF(RAISED FH PADS	1.000	36.00
HW4500A17	317400 ALEMITE GREASE RELIEF	1.000	4.00
HW4500A01	1641B(ALEMITE)400 UNIV, GREASE FITT	1.000	2.00
HW5100A03SP	WAVY WASHER (W1543-017)	1.000	2.00
35EP3401T05	FACE ENCL 206 BRG W/GRS, RELIEF & TGHSLV	1.000	42.00
HW4500A17	317400 ALEMITE GREASE RELIEF	1.000	4.00
HW4500A01	1641B(ALEMITE)400 UNIV, GREASE FITT	1.000	2.00
51XN1032A20	10-32 X 1 1/4 HX WS SL SR	2.000	2.00
51XB1214A16	12-14X1.00 HXWSSLD SERTYB	1.000	2.00
35FH4005A86	IEC FH W/GRSR, NO DIMPLES W/AUTOPHERETIC	1.000	10.00
51XW1032A06	10-32 X .38, TAPTITE II, HEX WSHR SLTD S	3.000	3.00
HA1005A02SP	SLINGER--06 BEARING, 1.14 I.D., 2.00 O.D	1.000	3.00
35CB4521	35 LIPPED CB LID (GALV & PHOSPH)	1.000	2.00
35GS1030	35 GS FOR CB LID - LEXIDE	1.000	2.00
51XW0832A07	8-32 X .44, TAPTITE II, HEX WSHR SLTD SE	4.000	2.00
HW2501D13SP	KEY, 3/16 SQ X 1.375	1.000	2.00
HA7000A01	KEY RETAINER 7/8" DIA SHAFT	1.000	2.00

Parts List (continued)			
Product ID	Description	Quantity	List Price
10XF0440S02	04-40 X 1/8 TYPE F HEX HD STAINLESS STIC	2.000	2.00
MJ1000A02	GREASE, POLYREX EM EXXON	0.050	10.00
35FN3002A05SP	EXTERNAL FAN, PLASTIC, FOR .637 DIA JOUR	1.000	22.00
MG1000G27	PAINT- S9282E CHARCOAL GREY	0.017	4,000.00
HA3100A15	THRUBOLT 10-32 X 8.375	4.000	2.00
LB1125C01	STD (STOCK) CARTON LABEL BALDOR WITH FLA	1.000	2.00
LC0005E01	CONN.DIA./WARNING LABEL (LC0005/LB1119)	1.000	2.00
NP1256L	NP STD LASER ENGRAVED, UL CSA CC, W/O TH	1.000	3.00
36PA1000	PACK GROUP W/LB5001	1.000	17.00

Performance Data at 460V, 60Hz, 1.5HP (Typical performance - Not guaranteed values)

General Characteristics							
Full Load Torque:	4.5 LB-FT			Start Configuration:	DOL		
No-Load Current:	1.75 Amps			Break-Down Torque:	19.6 LB-FT		
Line-line Res. @ 25°C.:	12.6 Ohms A Ph / 0.0 Ohms B Ph			Pull-Up Torque:	13.5 LB-FT		
Temp. Rise @ Rated Load:	67°C			Locked-Rotor Torque:	14.0 LB-FT		
Temp. Rise @ S.F. Load:	80°C			Starting Current:	17.0 Amps		
Load Characteristics							
% of Rated Load:	25	50	75	100	125	150	S.F.
Power Factor:	32.0	50.0	63.0	72.0	79.0	83.0	76.0
Efficiency:	61.2	73.6	77.1	77.9	77.1	75.4	77.4
Speed:	1783.0	1769.0	1752.0	1735.0	1715.0	1700.0	1723.0
Line Amperes:	1.8	1.9	2.15	2.45	2.85	3.25	2.7

Performance Graph at 460V, 60Hz, 1.5HP (Typical performance - Not guaranteed values)



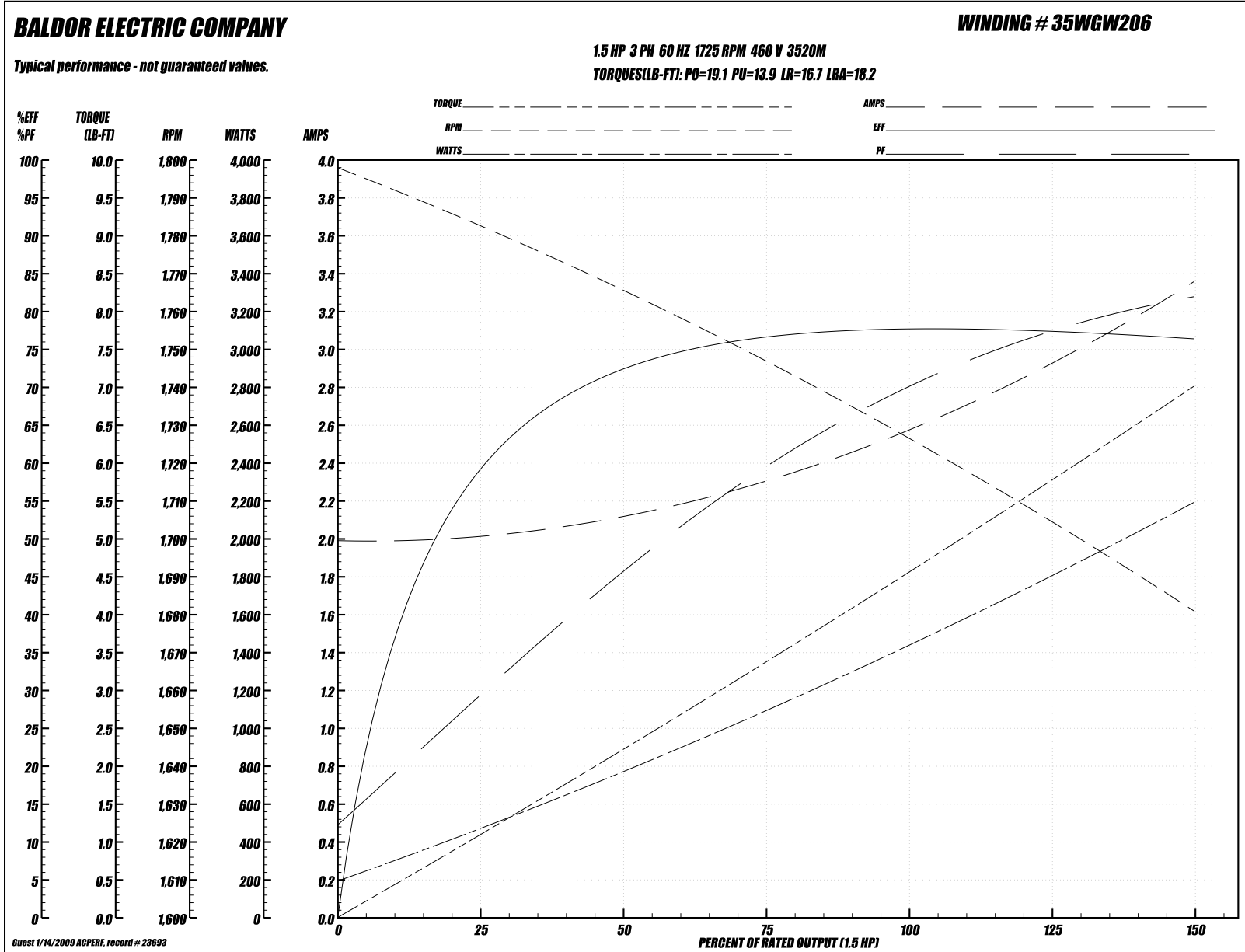
Performance Data at 460V, 60Hz, 1.5HP (Typical performance - Not guaranteed values)
General Characteristics

Full Load Torque:	4.53 LB-FT	Start Configuration:	DOL
No-Load Current:	2.0 Amps	Break-Down Torque:	19.1 LB-FT
Line-line Res. @ 25°C.:	12.3 Ohms A Ph / 0.0 Ohms B Ph	Pull-Up Torque:	13.9 LB-FT
Temp. Rise @ Rated Load:	77°C	Locked-Rotor Torque:	16.7 LB-FT
Temp. Rise @ S.F. Load:	90°C	Starting Current:	18.2 Amps

Load Characteristics

% of Rated Load:	25	50	75	100	125	150	S.F.
Power Factor:	29.0	46.0	59.0	70.0	77.0	82.0	74.0
Efficiency:	57.9	71.5	76.4	77.9	77.6	76.2	77.7
Speed:	1782.0	1765.0	1747.0	1728.0	1706.0	1680.0	1715.0
Line Amperes:	2.0	2.11	2.31	2.57	2.93	3.35	2.79

Performance Graph at 460V, 60Hz, 1.5HP (Typical performance - Not guaranteed values)



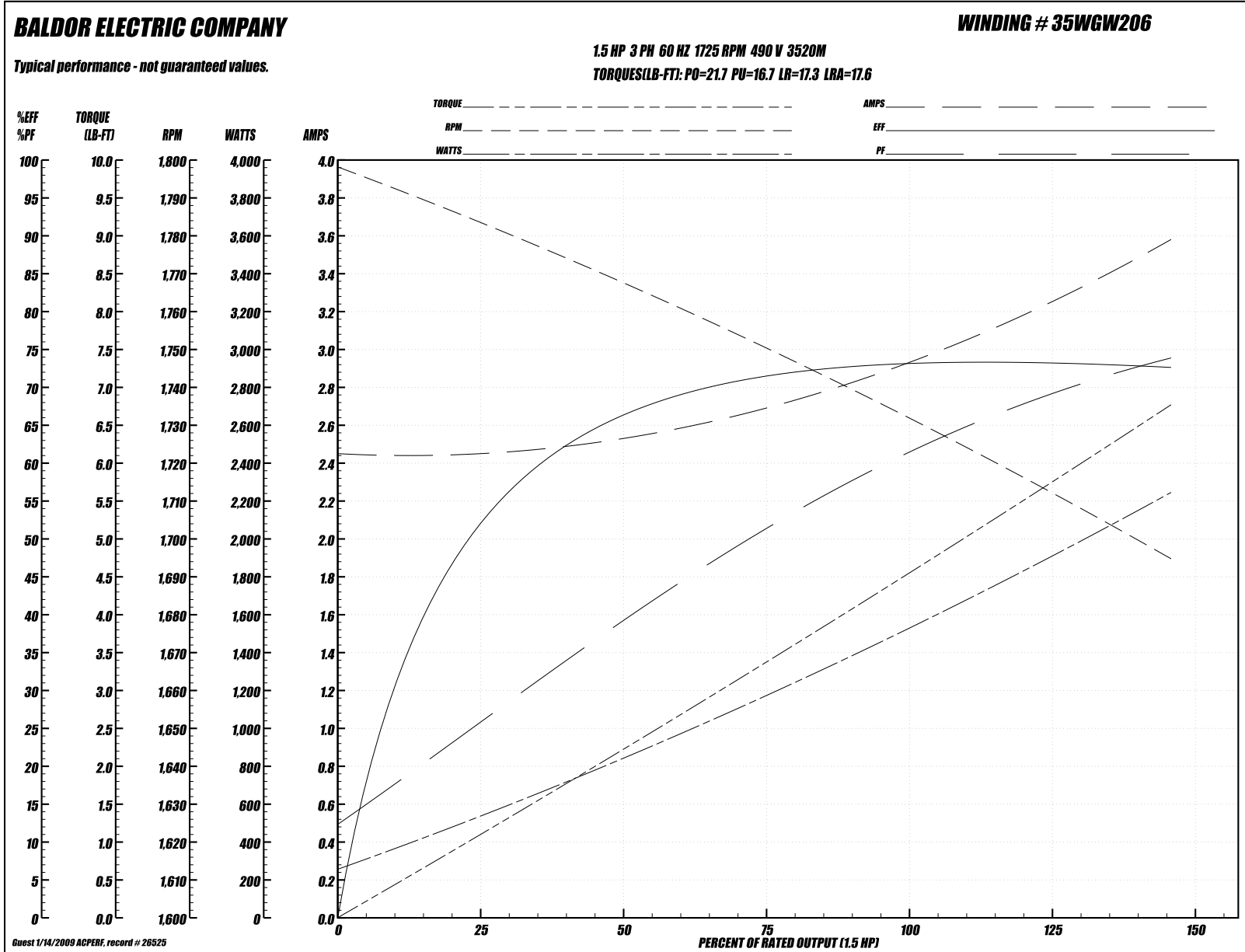
Performance Data at 490V, 60Hz, 1.5HP (Typical performance - Not guaranteed values)
General Characteristics

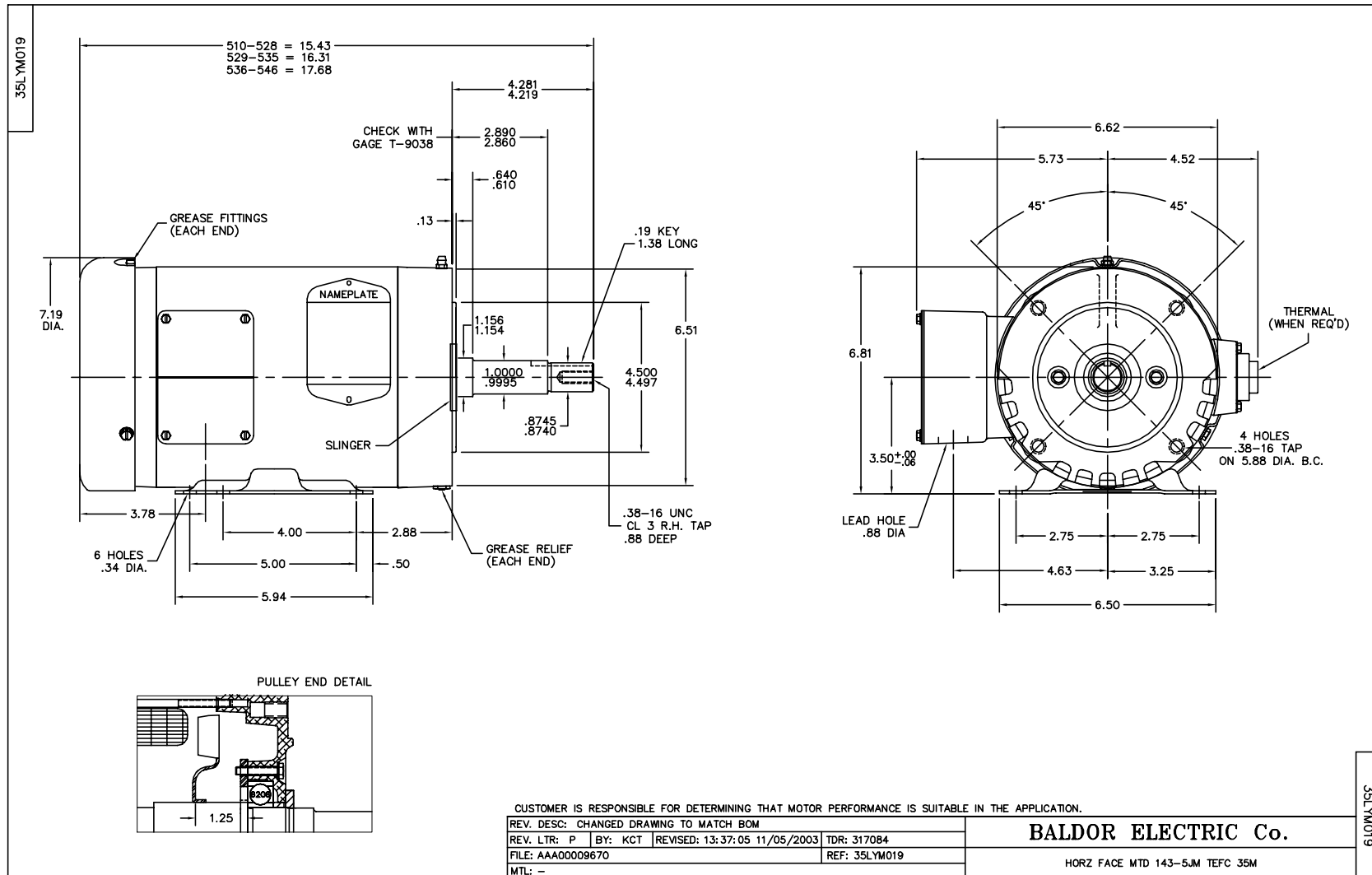
Full Load Torque:	4.5 LB-FT	Start Configuration:	DOL
No-Load Current:	2.45 Amps	Break-Down Torque:	21.7 LB-FT
Line-line Res. @ 25°C.:	12.3 Ohms A Ph / 0.0 Ohms B Ph	Pull-Up Torque:	16.7 LB-FT
Temp. Rise @ Rated Load:	96°C	Locked-Rotor Torque:	17.3 LB-FT
Temp. Rise @ S.F. Load:	111°C	Starting Current:	17.6 Amps

Load Characteristics

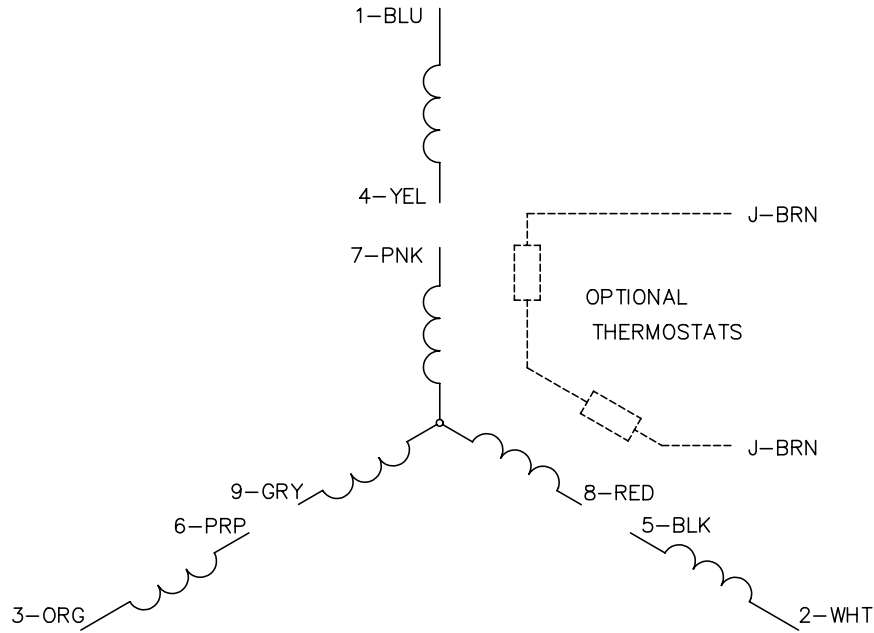
% of Rated Load:	25	50	75	100	125	150	S.F.
Power Factor:	26.0	40.0	51.0	61.0	68.0	75.0	65.0
Efficiency:	51.5	66.1	71.5	73.5	73.5	72.4	73.5
Speed:	1783.0	1768.0	1751.0	1733.0	1712.0	1696.0	1720.0
Line Amperes:	2.47	2.5	2.69	2.92	3.25	3.56	3.12

Performance Graph at 490V, 60Hz, 1.5HP (Typical performance - Not guaranteed values)

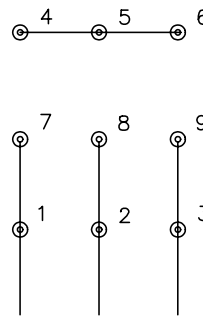




CD0005

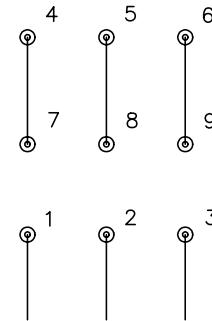


LOW VOLTAGE
(2Y)



LINE

HIGH VOLTAGE
(1Y)



LINE

NOTES:

1. INTERCHANGE ANY TWO LINE LEADS TO REVERSE ROTATION.
2. OPTIONAL THERMOSTATS ARE PROVIDED WHEN SPECIFIED.
3. ACTUAL NUMBER OF INTERNAL PARALLEL CIRCUITS MAY BE A MULTIPLE OF THOSE SHOWN ABOVE.
4. LEAD COLORS ARE OPTIONAL. LEADS MUST ALWAYS BE NUMBERED AS SHOWN.

REV. DESC: REVISE TO SHOW OPTIONAL COLORS			
REV. LTR: E	BY: JLP	REVISED: 01/19/99 10:15	TDR: 0171435
900000		FILE: AAA00005140	MDL: -
		MTL: -	

BALDOR ELECTRIC Co.

3PH, DV, 9 LEADS

CD0005