



# **BALDOR® • *RELIANCE***

## **Product Information Packet**

### **JPM3616T**

**7.5HP,3450RPM,3PH,60HZ,184JP,3640M,TEFC**

Product Detail							
Revision:	X	Status:	PRD/A	Change #:		Proprietary:	No
Type:	AC	Prod Type:	3640M	Elec. Spec:	36WGW385	CD Diagram:	CD0005
Enclosure	TEFC	Mfg Plant:		Mech Spec:	36R059	Layout:	36LYR059
Frame:	184JP	Mounting:	F1	Poles:	02	Created Date:	
Base:	RG	Rotation:	R	Insulation:	F	Eff. Date:	02-19-2007
Leads:	9#16	Literature:		Elec. Diagram:		Replaced By:	

Nameplate NP1256L									
CAT.NO.	JPM3616T								
SPEC.	36R59W385								
HP	7 1/2								
VOLTS	208-230/460								
AMP	19-17.2/8.6								
RPM	3450								
FRAME	184JP	HZ	60	PH	3				
SER.F.	1.00	CODE	L	DES	B	CLASS	F		
NEMA-NOM-EFF	87.5	PF	94						
RATING	40C AMB-CONT								
CC		USABLE AT 208V	19						
DE	6207	ODE	6205						
ENCL	TEFC	SN							

<b>Parts List</b>			
<b>Product ID</b>	<b>Description</b>	<b>Quantity</b>	<b>List Price</b>
SA037484	SA 36R59W385	1.000	535.00
RA033509	RA 36R59W385	1.000	414.00
36CB3004	36 CB CASTING W/1.09 DIA LEAD HOLE @ 6:0	1.000	19.00
36GS1000SP	GASKET-CONDUIT BOX, .06 THICK #SV-330 LE	1.000	5.00
51XB1016A08	10-16X 1/2HXWSSLD SERTYB	2.000	2.00
11XW1032G06	10-32 X .38, TAPTITE II, HEX WSHR SLTD U	1.000	3.00
HW3001A01	D3019 BRASS WASHER(STIMP)	1.000	2.00
36EP3104A04	FR ENDPLATE, MACH	1.000	58.00
HW4500A01	1641B(ALEMITE)400 UNIV, GREASE FITT	1.000	2.00
HW4500A17	317400 ALEMITE GREASE RELIEF	1.000	4.00
HW5100A05	WVY WSHR F/205 & 304 BRGS	1.000	2.00
36EP3405T06	PUEP ENCL 207 BRG T'SLV,GRSR,REL,SLINGER	1.000	84.00
HW4500A01	1641B(ALEMITE)400 UNIV, GREASE FITT	1.000	2.00
HW4500A17	317400 ALEMITE GREASE RELIEF	1.000	4.00
10XN2520A24	1/4-20X 1 1/2 HEX HD X	4.000	2.00
HW1001A25	LOCKWASHER 1/4, ZINC PLT .493 OD, .255 I	4.000	2.00
51XB1214A16	12-14X1.00 HXWSSLD SERTYB	1.000	2.00
36FH4009A103	IEC FH GREASER W/AUTOPHERETIC PRIMER	1.000	15.00
51XW1032A06	10-32 X .38, TAPTITE II, HEX WSHR SLTD S	3.000	3.00
36CB4516	36 LIPPED CB LID	1.000	2.00
37GS1001SP	GASKET, CONDUIT BOX LID, .06 THICK LEXID	1.000	3.00
51XW0832A07	8-32 X .44, TAPTITE II, HEX WSHR SLTD SE	4.000	2.00
HA2009A01	36-4613 SL ANOD. ALUM (STER	1.000	25.00
80XN1032A06	10-32 X 3/8 SET SC HEX SOCK	1.000	2.00

<b>Parts List (continued)</b>			
<b>Product ID</b>	<b>Description</b>	<b>Quantity</b>	<b>List Price</b>
HW2501D13SP	KEY, 3/16 SQ X 1.375	1.000	2.00
HA7000A01	KEY RETAINER 7/8" DIA SHAFT	1.000	2.00
10XF0440S02	04-40 X 1/8 TYPE F HEX HD STAINLESS STIC	2.000	2.00
HW3200A01	3/8-16X3/4 I-BLT WELDED F/S	1.000	3.00
MJ1000A02	GREASE, POLYREX EM EXXON	0.050	10.00
MG1000G27	PAINT- S9282E CHARCOAL GREY	0.022	4,000.00
LB1115	LABEL,LIFTING DEVICE (ON ROLLS0	1.000	2.00
35FN3002A04SP	EXT. FAN, PLASTIC, FOR .907/.905 JOURNAL	1.000	22.00
HA3101A28	THRUBOLT 1/4-20 X 12.500 OHIO ROD	4.000	2.00
LB1125C01	STD (STOCK) CARTON LABEL BALDOR WITH FLA	1.000	2.00
LC0005E01	CONN.DIA./WARNING LABEL (LC0005/LB1119)	1.000	2.00
NP1256L	NP STD LASER ENGRAVED, UL CSA CC, W/O TH	1.000	3.00
G0PA1000	PACKAGING GROUP	1.000	38.00

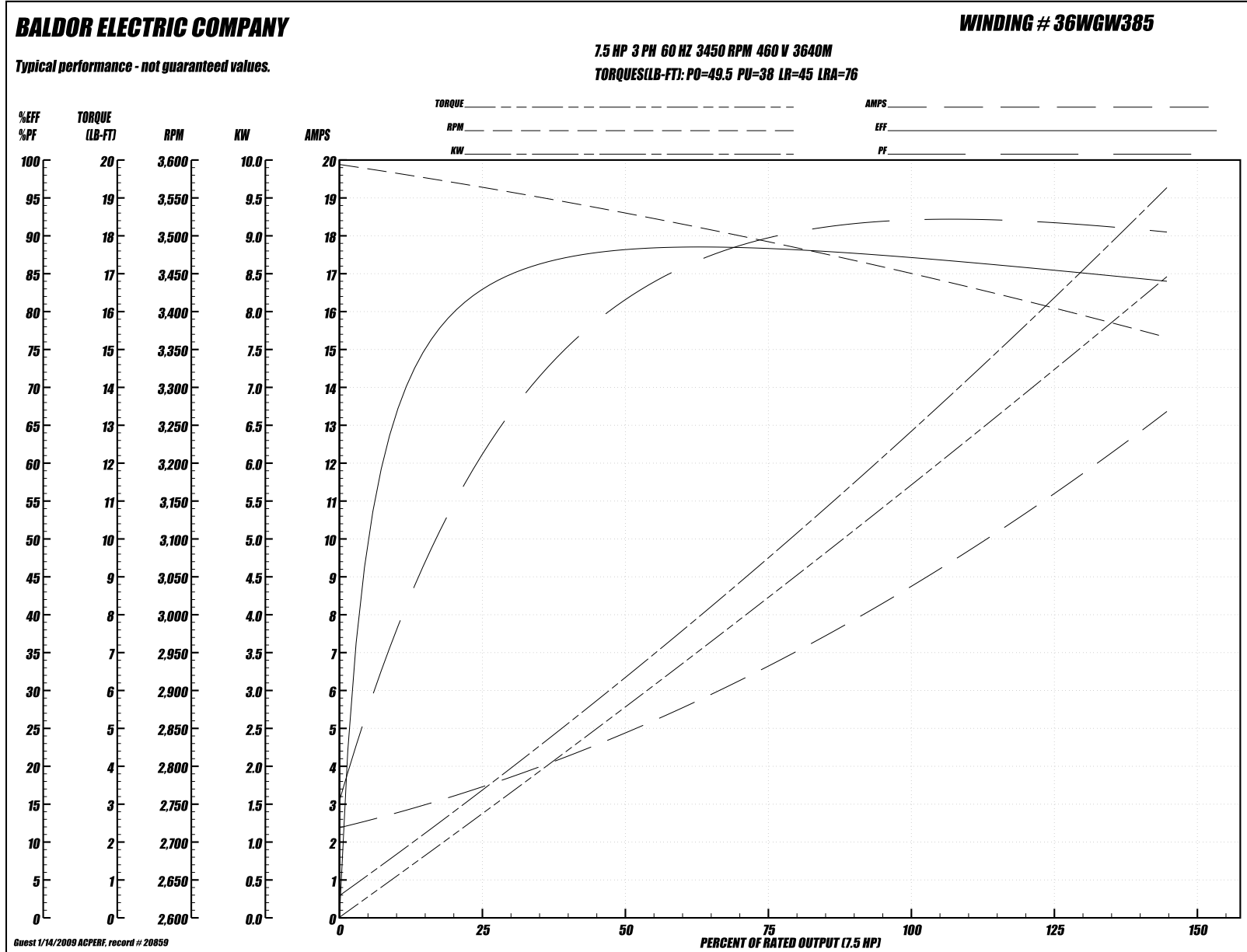
**Performance Data at 460V, 60Hz, 7.5HP (Typical performance - Not guaranteed values)**
**General Characteristics**

<b>Full Load Torque:</b>	11.3 LB-FT	<b>Start Configuration:</b>	DOL
<b>No-Load Current:</b>	2.4 Amps	<b>Break-Down Torque:</b>	49.5 LB-FT
<b>Line-line Res. @ 25°C.:</b>	1.55 Ohms A Ph / 0.0 Ohms B Ph	<b>Pull-Up Torque:</b>	38.0 LB-FT
<b>Temp. Rise @ Rated Load:</b>	75°C	<b>Locked-Rotor Torque:</b>	45.0 LB-FT
<b>Temp. Rise @ S.F. Load:</b>	0°C	<b>Starting Current:</b>	76.0 Amps

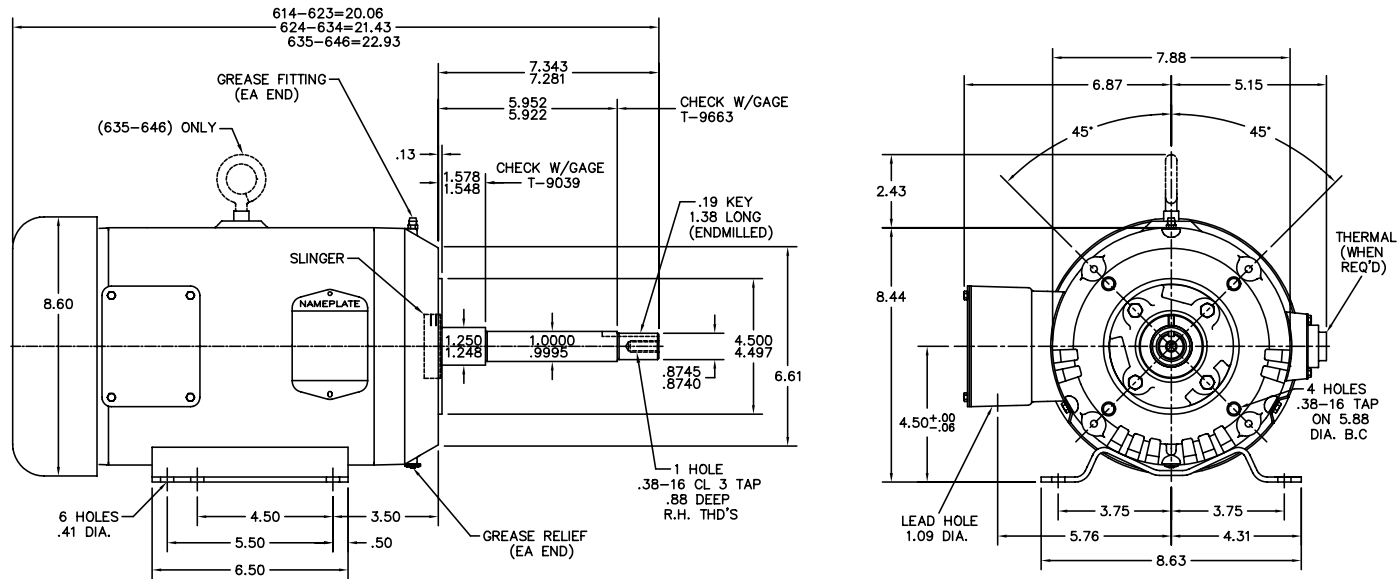
**Load Characteristics**

<b>% of Rated Load:</b>	<b>25</b>	<b>50</b>	<b>75</b>	<b>100</b>	<b>125</b>	<b>150</b>	<b>S.F.</b>
<b>Power Factor:</b>	69.0	84.0	90.0	93.0	93.0	94.0	0.0
<b>Efficiency:</b>	83.3	87.8	88.1	87.3	86.0	83.8	0.0
<b>Speed:</b>	3563.0	3528.0	3492.0	3449.0	3417.0	3362.0	0.0
<b>Line Amperes:</b>	3.4	5.0	6.7	8.6	10.9	13.4	0.0

Performance Graph at 460V, 60Hz, 7.5HP (Typical performance - Not guaranteed values)



36LYR059



CUSTOMER IS RESPONSIBLE FOR DETERMINING THAT MOTOR PERFORMANCE IS SUITABLE IN THE APPLICATION.

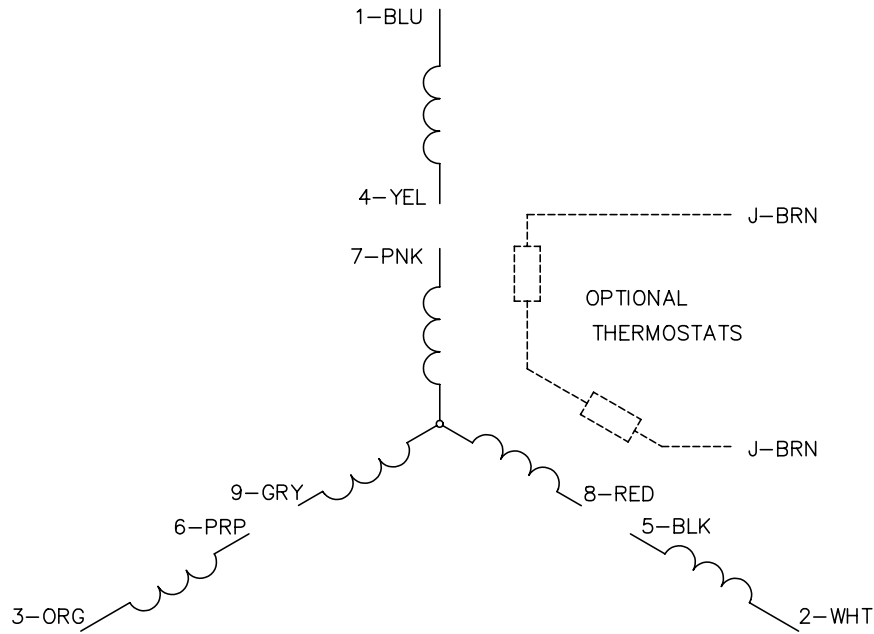
REV. DESC: 36FH4009A31 WAS 36FH4000A31	TDR: 0216565
REV. LTR: K   BY: M/M   REVISED: 08/07/00 4:04	REF: -
FILE: AAA00004168	
MTL: -	

**BALDOR ELECTRIC Co.**

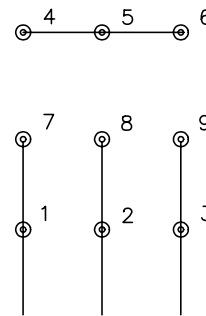
STD HORZ 182-4JP TEFC 36M

36LYR059

CD0005

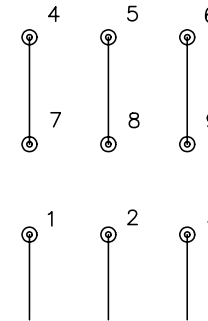


LOW VOLTAGE  
(2Y)



LINE

HIGH VOLTAGE  
(1Y)



LINE

NOTES:

1. INTERCHANGE ANY TWO LINE LEADS TO REVERSE ROTATION.
2. OPTIONAL THERMOSTATS ARE PROVIDED WHEN SPECIFIED.
3. ACTUAL NUMBER OF INTERNAL PARALLEL CIRCUITS MAY BE A MULTIPLE OF THOSE SHOWN ABOVE.
4. LEAD COLORS ARE OPTIONAL. LEADS MUST ALWAYS BE NUMBERED AS SHOWN.

REV. DESC: REVISE TO SHOW OPTIONAL COLORS			
REV. LTR: E	BY: JLP	REVISED: 01/19/99 10:15	TDR: 0171435
90000		FILE: AAA00005140	MDL: -
		MTL: -	

**BALDOR ELECTRIC Co.**

3PH, DV, 9 LEADS

CD0005