



# **BALDOR® • *RELIANCE***

## **Product Information Packet**

### **KL1203**

**.25HP,1725RPM,1PH,60HZ,56C,3411L,OPEN,F1**

Product Detail							
Revision:	R	Status:	PRD/A	Change #:		Proprietary:	No
Type:	AC	Prod Type:	3411L	Elec. Spec:	34WG5506	CD Diagram:	CD0001
Enclosure	OPEN	Mfg Plant:		Mech Spec:	34F011	Layout:	34LYF011
Frame:	56C	Mounting:	F1	Poles:	04	Created Date:	
Base:	N	Rotation:	R	Insulation:	B	Eff. Date:	06-12-2008
Leads:	6#18	Literature:		Elec. Diagram:		Replaced By:	

Nameplate NP1256L									
CAT.NO.	KL1203								
SPEC.	34F11-5506								
HP	1/4								
VOLTS	115/230								
AMP	5/2.5								
RPM	1725								
FRAME	56C	HZ			60	PH	1		
SER.F.	1.35	CODE			L	DES	N	CLASS	B
NEMA-NOM-EFF	55	PF			57				
RATING	40C AMB-CONT								
CC				USABLE AT 208V		3			
DE	6203	ODE			6203				
ENCL	OPEN	SN							
	SFA 5.6/2.8								

<b>Parts List</b>			
<b>Product ID</b>	<b>Description</b>	<b>Quantity</b>	<b>List Price</b>
SA009966	SA 34F11-5506	1.000	140.00
RA006411	RA 34F11-5506	1.000	117.00
EC1161A02	BMI 091A161B125AD2A ELEC CAP 115V 1.4 X	1.000	14.00
NS2512A01	INSULATOR, CONDUIT BOX X X	1.000	2.00
34CB3002A	CB CAST W/.88 DIA HOLE	1.000	13.00
51XB1016A07	10-16 X 7/16 HXWSSLD SERTYB	2.000	2.00
11XW1032G06	10-32 X .38, TAPTITE II, HEX WSHR SLTD U	1.000	3.00
51XW0832A07	8-32 X .44, TAPTITE II, HEX WSHR SLTD SE	2.000	2.00
SP1006A01	TERM. BOARD, MODE 35 SW X H-23655	1.000	7.00
34EP3210A03SP	FR ENDPLATE, MACH	1.000	52.00
NS2500A01	INSULATOR, AUTO THER PROT	1.000	2.00
34CB4800SP	CAPACITOR COVER, STAMPED X X	1.000	20.00
51XB1016A05	10-16X5/16HX WA SL SR TYB (F/S)	2.000	2.00
HW5100A03SP	WAVY WASHER (W1543-017)	1.000	2.00
34EP3401A01SP	PU ENDPLATE, MACH	1.000	63.00
51XN1032A20	10-32 X 1 1/4 HX WS SL SR	2.000	2.00
34AD2000	BAFFLE PLATE, STAMPED	1.000	2.00
51XT0632A06	6-32X3/8 TY23 HXWS SLDSR	4.000	2.00
34FH4000A11	DRIP COVER, STAMPED	1.000	22.00
51XW1032A06	10-32 X .38, TAPTITE II, HEX WSHR SLTD S	3.000	3.00
34CB4517	CB LID 4 MTG HOLES .22 DIA STAMPED, FOR	1.000	5.00
51XW0832A07	8-32 X .44, TAPTITE II, HEX WSHR SLTD SE	4.000	2.00
HW2501D13SP	KEY, 3/16 SQ X 1.375	1.000	2.00
HA7000A04	KEY RETAINER 0.625 DIA SHAFTS	1.000	2.00

<b>Parts List (continued)</b>			
<b>Product ID</b>	<b>Description</b>	<b>Quantity</b>	<b>List Price</b>
MG1000G27	PAINT- S9282E CHARCOAL GREY	0.014	4,000.00
10XF0440S02	04-40 X 1/8 TYPE F HEX HD STAINLESS STIC	2.000	2.00
SP5056A24	MODEL 34 TYPE L STATIONARY SWITCH WITH L	1.000	18.00
HA3100A12	THRUBOLT 10-32 X 7.375	4.000	2.00
LB1125C01	STD (STOCK) CARTON LABEL BALDOR WITH FLA	1.000	2.00
LC0001A01	CONN LABEL / WARNING LABEL (LC0001 / LB1	1.000	2.00
NP1256L	NP STD LASER ENGRAVED, UL CSA CC, W/O TH	1.000	3.00
34PA1002	PACKING GROUP, BALDOR	1.000	13.00

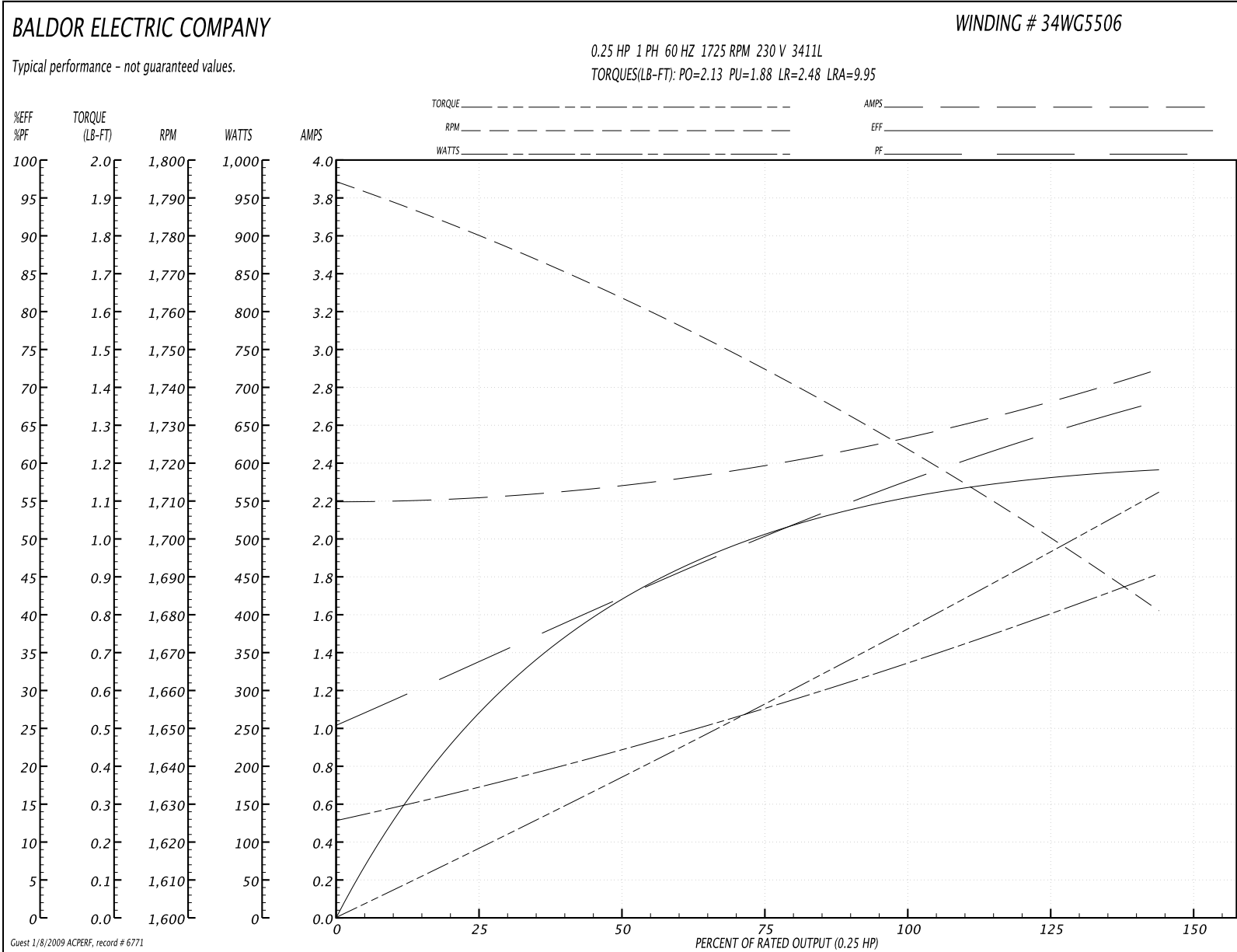
**Performance Data at 230V, 60Hz, 0.25HP (Typical performance - Not guaranteed values)**
**General Characteristics**

<b>Full Load Torque:</b>	0.75 LB-FT	<b>Start Configuration:</b>	DOL
<b>No-Load Current:</b>	2.2 Amps	<b>Break-Down Torque:</b>	2.13 LB-FT
<b>Line-line Res. @ 25°C.:</b>	8.88 Ohms A Ph / 7.06 Ohms B Ph	<b>Pull-Up Torque:</b>	1.88 LB-FT
<b>Temp. Rise @ Rated Load:</b>	42°C	<b>Locked-Rotor Torque:</b>	2.48 LB-FT
<b>Temp. Rise @ S.F. Load:</b>	50°C	<b>Starting Current:</b>	9.95 Amps

**Load Characteristics**

<b>% of Rated Load:</b>	<b>25</b>	<b>50</b>	<b>75</b>	<b>100</b>	<b>125</b>	<b>150</b>	<b>S.F.</b>
<b>Power Factor:</b>	31.0	40.0	49.0	57.0	63.0	69.0	67.0
<b>Efficiency:</b>	27.0	42.0	51.0	55.0	58.0	59.0	59.0
<b>Speed:</b>	1779.0	1763.0	1745.0	1725.0	1705.0	1680.0	1690.0
<b>Line Amperes:</b>	2.2	2.3	2.4	2.5	2.7	2.9	2.8

Performance Graph at 230V, 60Hz, 0.25HP (Typical performance - Not guaranteed values)



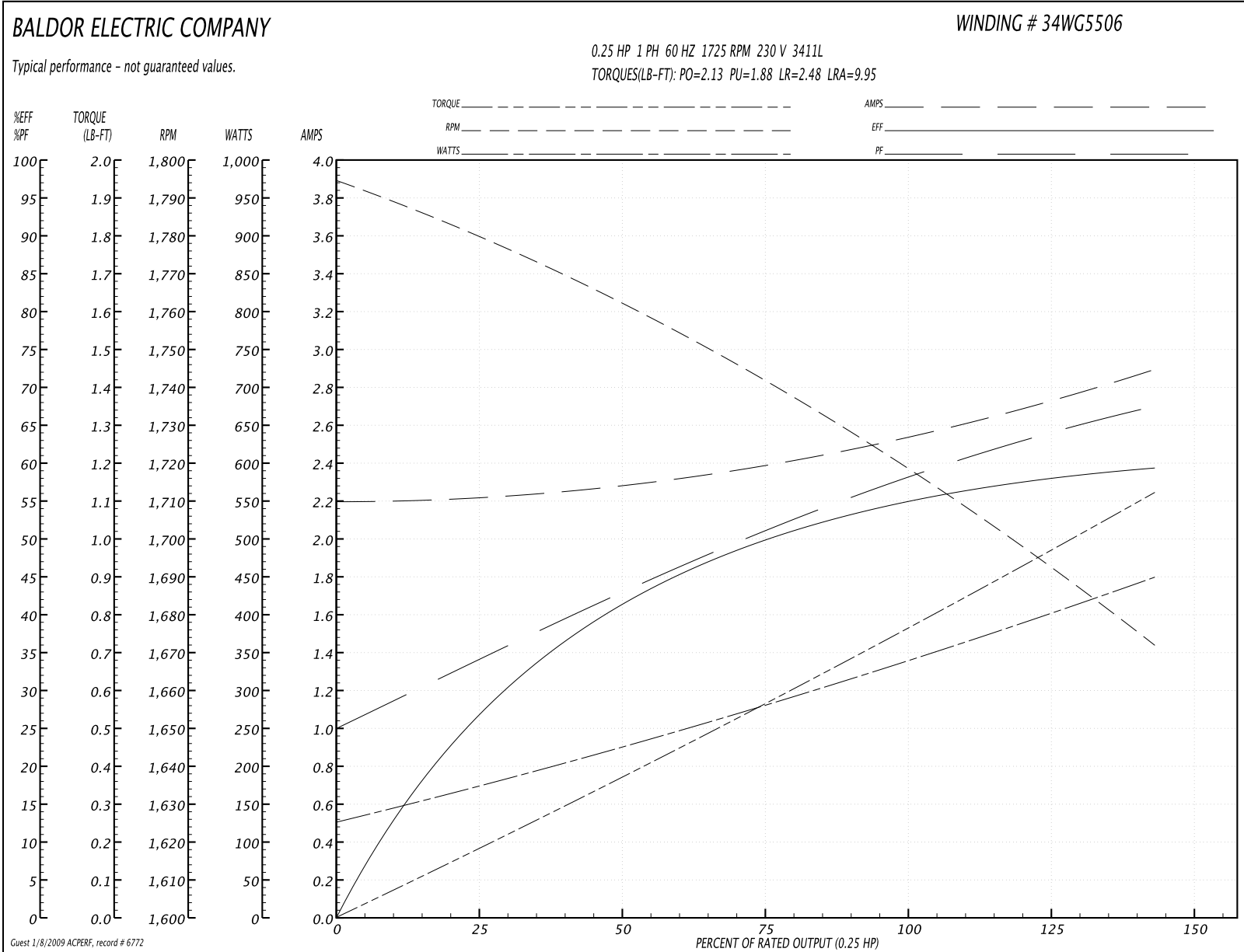
**Performance Data at 230V, 60Hz, 0.25HP (Typical performance - Not guaranteed values)**
**General Characteristics**

<b>Full Load Torque:</b>	0.75 LB-FT	<b>Start Configuration:</b>	DOL
<b>No-Load Current:</b>	2.2 Amps	<b>Break-Down Torque:</b>	2.13 LB-FT
<b>Line-line Res. @ 25°C.:</b>	8.88 Ohms A Ph / 7.06 Ohms B Ph	<b>Pull-Up Torque:</b>	1.88 LB-FT
<b>Temp. Rise @ Rated Load:</b>	57°C	<b>Locked-Rotor Torque:</b>	2.48 LB-FT
<b>Temp. Rise @ S.F. Load:</b>	70°C	<b>Starting Current:</b>	9.95 Amps

**Load Characteristics**

<b>% of Rated Load:</b>	<b>25</b>	<b>50</b>	<b>75</b>	<b>100</b>	<b>125</b>	<b>150</b>	<b>S.F.</b>
<b>Power Factor:</b>	32.0	40.0	49.0	57.0	63.0	69.0	67.0
<b>Efficiency:</b>	28.0	40.0	50.0	55.0	58.0	59.0	59.0
<b>Speed:</b>	1779.0	1763.0	1740.0	1720.0	1700.0	1670.0	1680.0
<b>Line Amperes:</b>	2.2	2.3	2.4	2.5	2.7	2.9	2.8

Performance Graph at 230V, 60Hz, 0.25HP (Typical performance - Not guaranteed values)



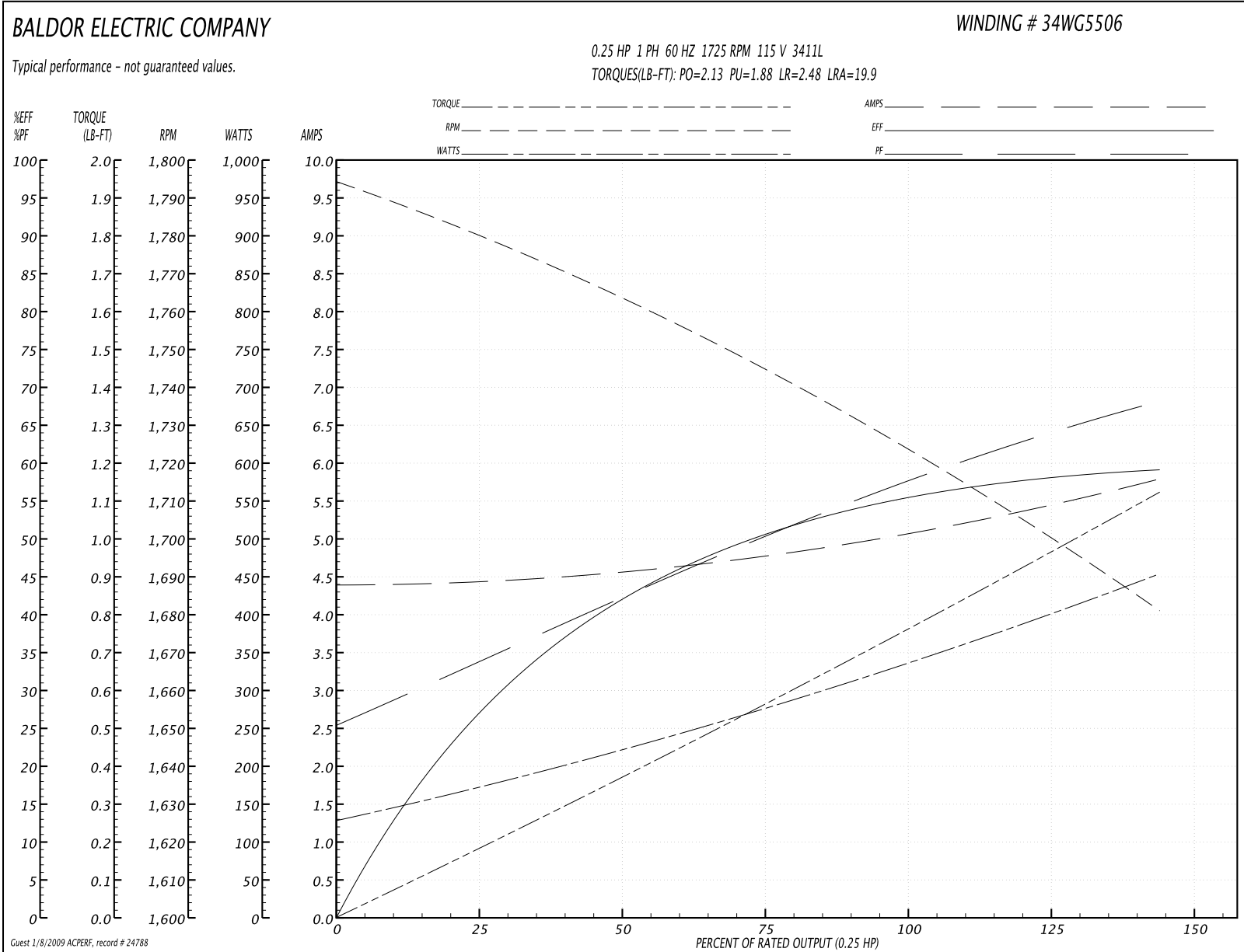
**Performance Data at 115V, 60Hz, 0.25HP (Typical performance - Not guaranteed values)**
**General Characteristics**

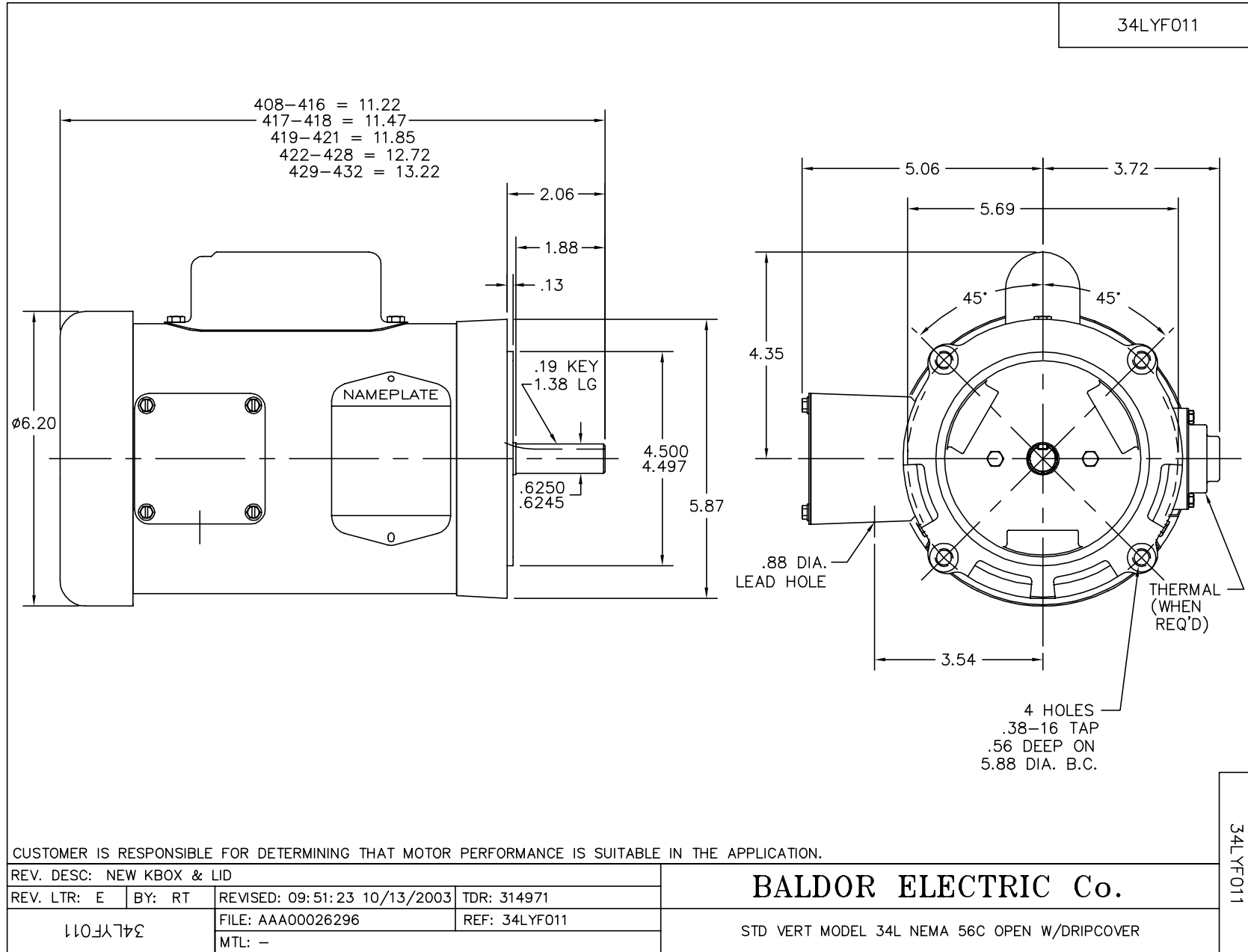
<b>Full Load Torque:</b>	0.75 LB-FT	<b>Start Configuration:</b>	DOL
<b>No-Load Current:</b>	4.4 Amps	<b>Break-Down Torque:</b>	2.13 LB-FT
<b>Line-line Res. @ 25°C.:</b>	2.22 Ohms A Ph / 7.06 Ohms B Ph	<b>Pull-Up Torque:</b>	1.88 LB-FT
<b>Temp. Rise @ Rated Load:</b>	42°C	<b>Locked-Rotor Torque:</b>	2.48 LB-FT
<b>Temp. Rise @ S.F. Load:</b>	50°C	<b>Starting Current:</b>	19.9 Amps

**Load Characteristics**

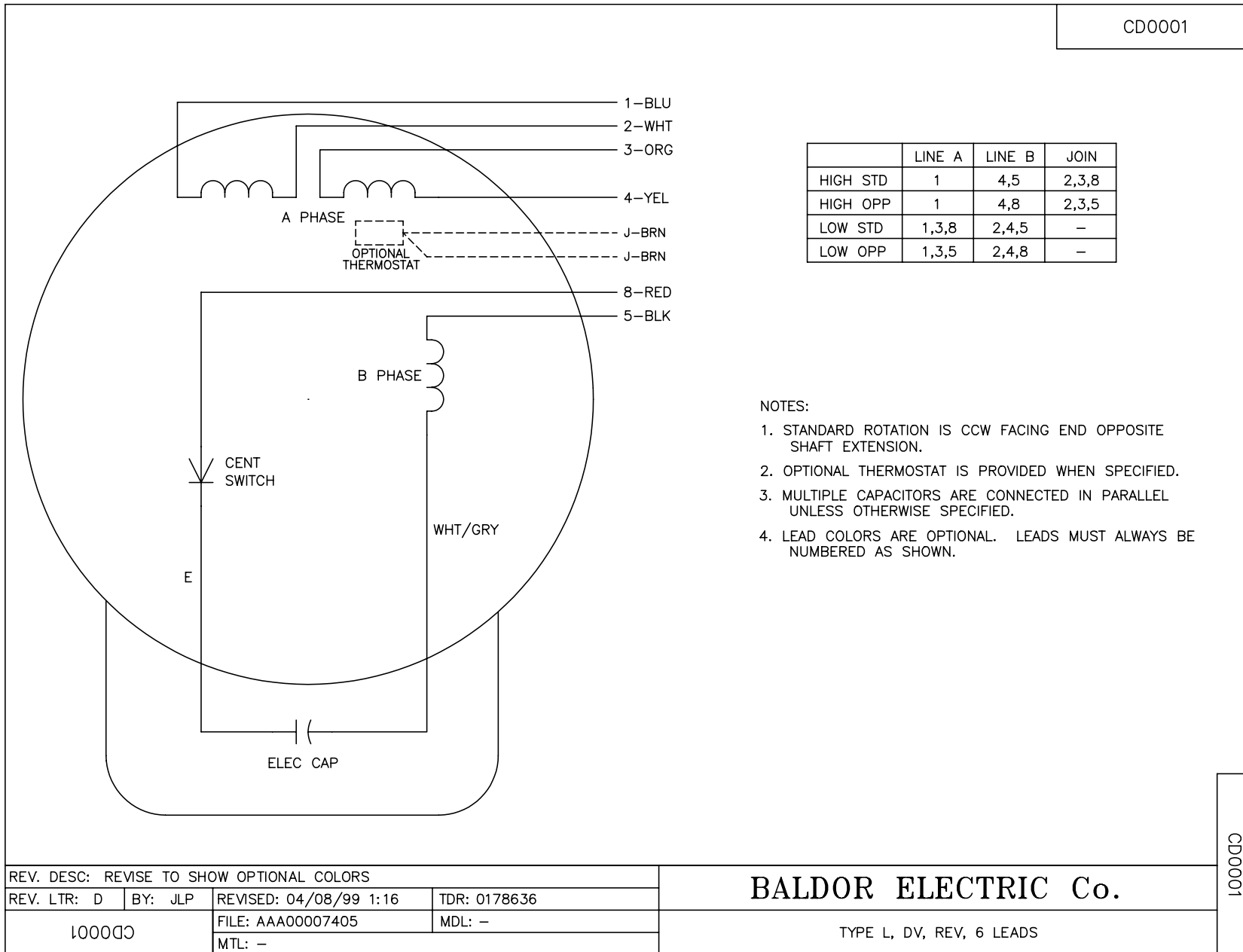
<b>% of Rated Load:</b>	<b>25</b>	<b>50</b>	<b>75</b>	<b>100</b>	<b>125</b>	<b>150</b>	<b>S.F.</b>
<b>Power Factor:</b>	31.0	40.0	49.0	57.0	63.0	69.0	67.0
<b>Efficiency:</b>	27.0	42.0	51.0	55.0	58.0	59.0	59.0
<b>Speed:</b>	1779.0	1763.0	1745.0	1725.0	1705.0	1680.0	1690.0
<b>Line Amperes:</b>	4.4	4.6	4.8	5.0	5.4	5.8	5.6

Performance Graph at 115V, 60Hz, 0.25HP (Typical performance - Not guaranteed values)





CD0001



REV. DESC: REVISE TO SHOW OPTIONAL COLORS			
REV. LTR: D	BY: JLP	REVISED: 04/08/99 1:16	TDR: 0178636
100000		FILE: AAA00007405	MDL: -
		MTL: -	

**BALDOR ELECTRIC Co.**

TYPE L, DV, REV, 6 LEADS

CD0001