



BALDOR® • *RELIANCE*

Product Information Packet

L3507

.75HP,1725RPM,1PH,60HZ,56,3428LC,TEFC,F1

Product Detail							
Revision:	M	Status:	PRD/A	Change #:		Proprietary:	No
Type:	AC	Prod Type:	3428LC	Elec. Spec:	34WGY094	CD Diagram:	CD0055
Enclosure	TEFC	Mfg Plant:		Mech Spec:	34G426	Layout:	34LYG426
Frame:	56	Mounting:	F1	Poles:	04	Created Date:	
Base:	RG	Rotation:	R	Insulation:	B	Eff. Date:	04-28-2008
Leads:	6#18	Literature:		Elec. Diagram:		Replaced By:	

Nameplate NP1256L									
CAT.NO.	L3507								
SPEC.	34G426Y094								
HP	.75								
VOLTS	115/230								
AMP	8.4/4.2								
RPM	1725								
FRAME	56	HZ			60	PH	1		
SER.F.	1.25	CODE			J	DES	N	CLASS	B
NEMA-NOM-EFF	72	PF			78				
RATING	40C AMB-CONT								
CC				USABLE AT 208V		5.4			
DE	6203	ODE			6203				
ENCL	TEFC	SN							
	SFA 10/5								

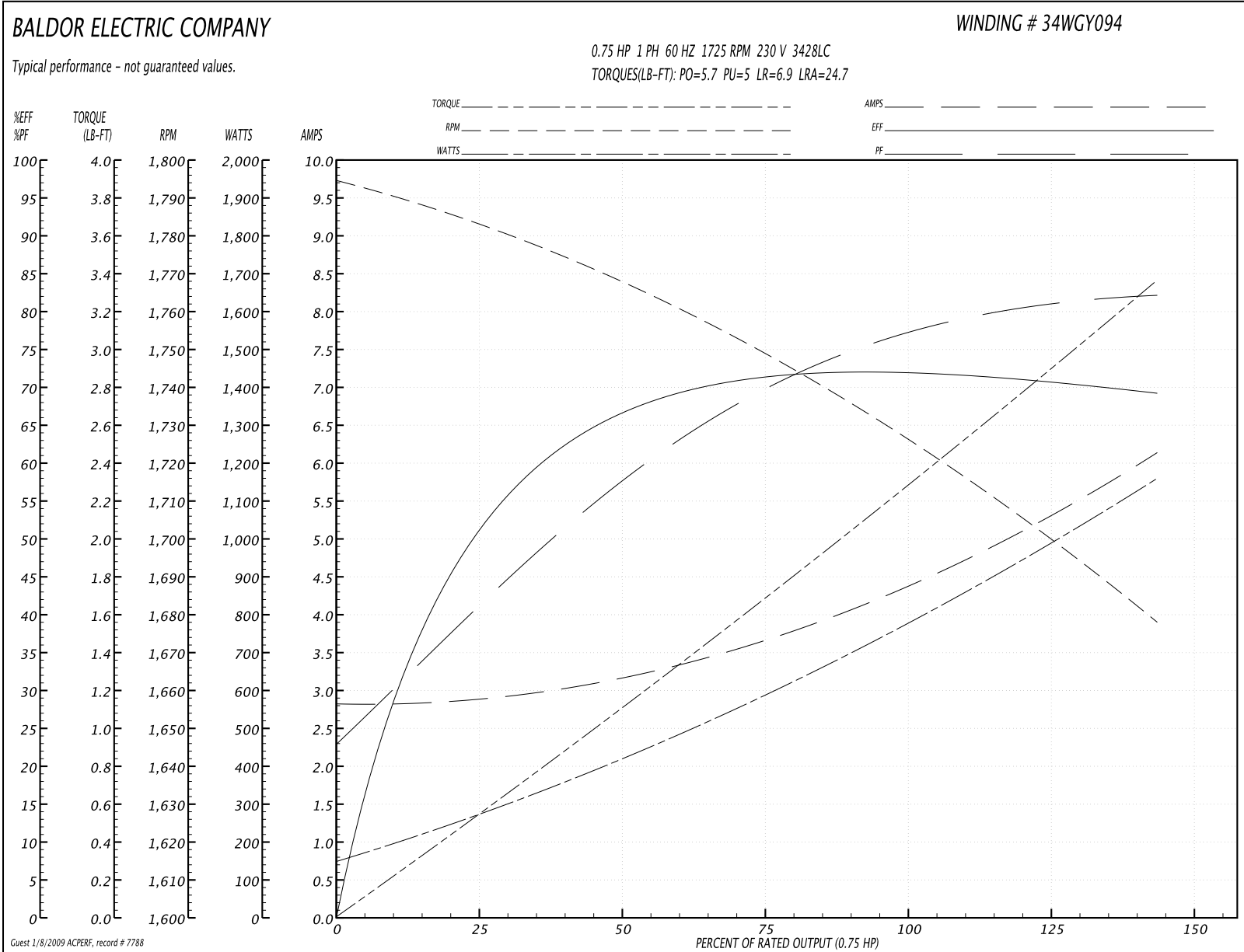
Parts List			
Product ID	Description	Quantity	List Price
SA077972	SA 34G426Y094	1.000	220.00
RA071484	RA 34G426Y094	1.000	184.00
OC3020F12SP	CYL OIL CAP 20MFD/370V	1.000	24.00
EC1270A02SP	ELEC CAP, 270-324 MFD, 125V, 1.48D X 3.	1.000	15.00
NS2512A01	INSULATOR, CONDUIT BOX X X	1.000	2.00
34CB3002A	CB CAST W/.88 DIA HOLE	1.000	13.00
34GS1029A01	GASKET, CONDUIT BOX	1.000	2.00
51XB1016A07	10-16 X 7/16 HXWSSLD SERTYB	2.000	2.00
11XW1032G06	10-32 X .38, TAPTITE II, HEX WSHR SLTD U	1.000	3.00
51XW0832A07	8-32 X .44, TAPTITE II, HEX WSHR SLTD SE	2.000	2.00
34EP3102A01SP	FR ENDPLATE, MACH	1.000	68.00
34CB3801	CAPACITOR BOX, DIE CAST	1.000	16.00
34GS3002	GASKET, CAPACITOR BOX	1.000	2.00
34GS5003	FOAM SLEEVE, ID = 2 1/16" X 3 3/8"	1.000	2.00
51XB1214A08	12-14 X 1/2HX WS SL SR TYBX	2.000	2.00
HW5100A03SP	WAVY WASHER (W1543-017)	1.000	2.00
34EP3102A02SP	FR/PU ENDPLATE, MACH	1.000	24.00
XY1032A02	10-32 HEX NUT DIRECTIONAL SERRATION	4.000	2.00
34FN3002A01SP	EXTERNAL FAN, PLASTIC, .637/.639 HUB W/	1.000	14.00
34FH4002A01SP	IEC FH NO GREASER	1.000	23.00
51XW1032A06	10-32 X .38, TAPTITE II, HEX WSHR SLTD S	3.000	3.00
34CB4517	CB LID 4 MTG HOLES .22 DIA STAMPED, FOR	1.000	5.00
34GS1031A01	GASKET, FLAT CONDUIT BOX LID (LEXIDE)	1.000	2.00
51XW0832A07	8-32 X .44, TAPTITE II, HEX WSHR SLTD SE	4.000	2.00

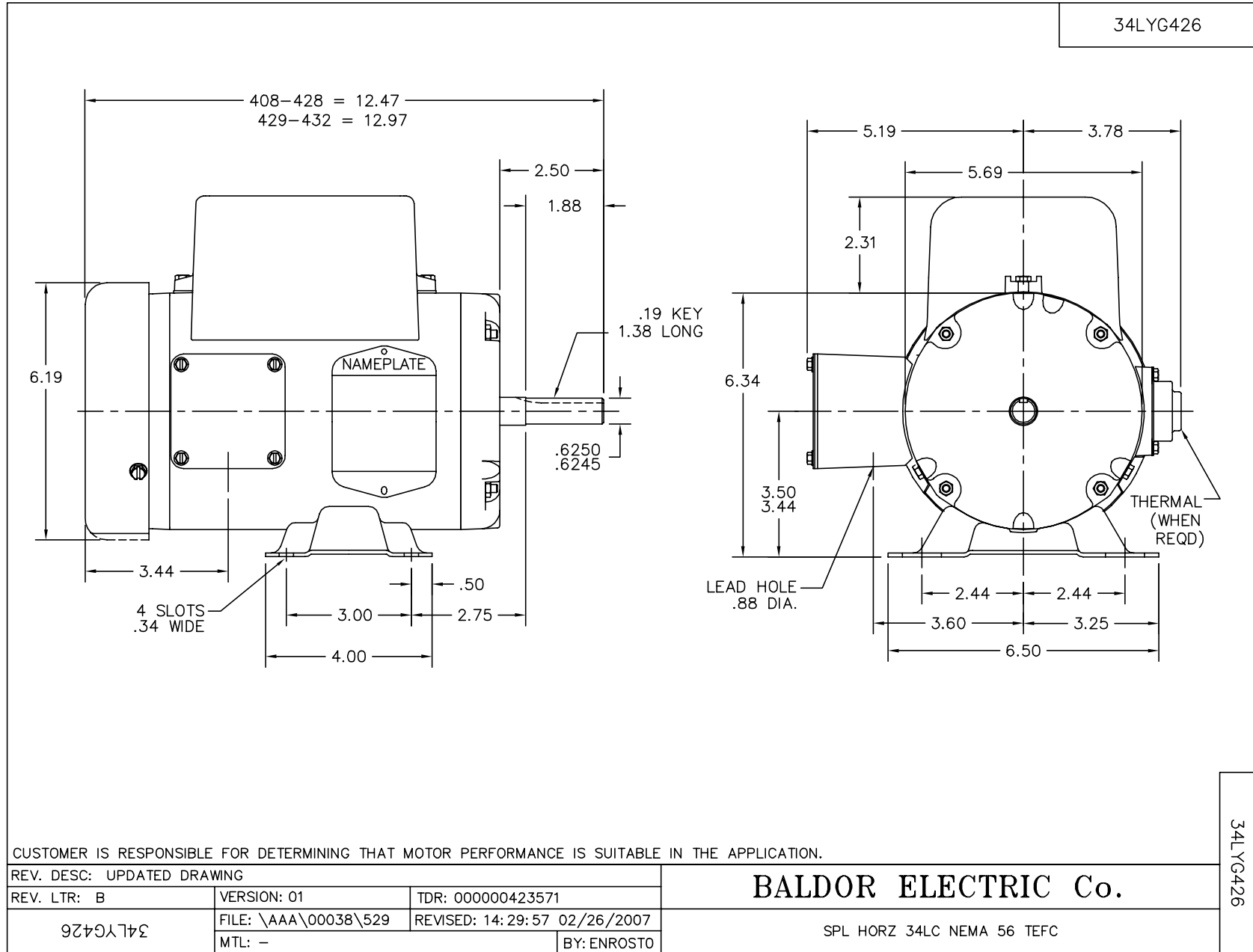
Parts List (continued)			
Product ID	Description	Quantity	List Price
HW2501D13SP	KEY, 3/16 SQ X 1.375	1.000	2.00
HA7000A04	KEY RETAINER 0.625 DIA SHAFTS	1.000	2.00
MG1000G27	PAINT- S9282E CHARCOAL GREY	0.014	4,000.00
10XF0440S02	04-40 X 1/8 TYPE F HEX HD STAINLESS STIC	2.000	2.00
SP5056A18	MODEL 34 TYPE LC STATIONARY SWITCH WITH	1.000	27.00
HA3100A37	THRUBOLT 10-32 X 8.500	4.000	2.00
LB1125C01	STD (STOCK) CARTON LABEL BALDOR WITH FLA	1.000	2.00
LC0001A01	CONN LABEL / WARNING LABEL (LC0001 / LB1	1.000	2.00
NP1256L	NP STD LASER ENGRAVED, UL CSA CC, W/O TH	1.000	3.00
34PA1005	PACKING GROUP, BALDOR	1.000	10.00
LB5040	INSTRUCTION TAG, AC & DC	1.000	2.00

Performance Data at 230V, 60Hz, 0.75HP (Typical performance - Not guaranteed values)

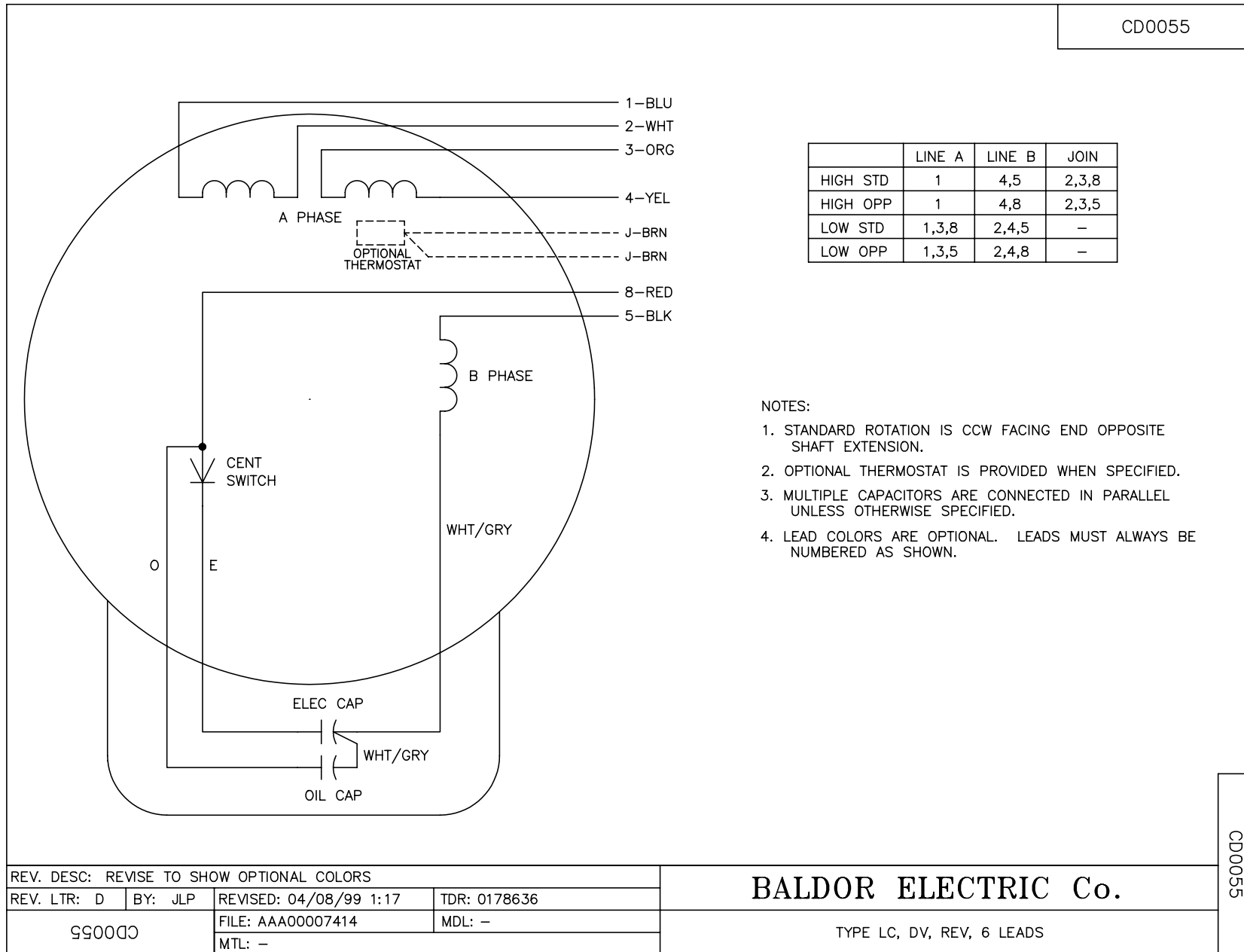
General Characteristics							
Full Load Torque:	2.25 LB-FT			Start Configuration:	DOL		
No-Load Current:	2.8 Amps			Break-Down Torque:	5.7 LB-FT		
Line-line Res. @ 25°C.:	3.22 Ohms A Ph / 1.76 Ohms B Ph			Pull-Up Torque:	5.0 LB-FT		
Temp. Rise @ Rated Load:	71°C			Locked-Rotor Torque:	6.9 LB-FT		
Temp. Rise @ S.F. Load:	89°C			Starting Current:	24.7 Amps		
Load Characteristics							
% of Rated Load:	25	50	75	100	125	150	S.F.
Power Factor:	43.0	57.0	70.0	78.0	82.0	86.0	82.0
Efficiency:	50.2	66.1	71.1	72.3	72.0	68.6	72.0
Speed:	1780.0	1766.0	1749.0	1729.0	1707.0	1675.0	1707.0
Line Amperes:	2.9	3.2	3.7	4.3	5.1	6.2	5.1

Performance Graph at 230V, 60Hz, 0.75HP (Typical performance - Not guaranteed values)





CD0055



REV. DESC: REVISE TO SHOW OPTIONAL COLORS			
REV. LTR: D	BY: JLP	REVISED: 04/08/99 1:17	TDR: 0178636
99000		FILE: AAA00007414	MDL: -
		MTL: -	

BALDOR ELECTRIC Co.

TYPE LC, DV, REV, 6 LEADS

CD0055