



# **BALDOR® • *RELIANCE***

## **Product Information Packet**

### **L3608TM**

**5HP,3450RPM,1PH,60HZ,184T,3640LC,TEFC,F1**

Product Detail							
Revision:	AD	Status:	PRD/A	Change #:		Proprietary:	No
Type:	AC	Prod Type:	3640LC	Elec. Spec:	36WGW957	CD Diagram:	CD0002A02
Enclosure	TEFC	Mfg Plant:		Mech Spec:	36F227	Layout:	36LYF227
Frame:	184T	Mounting:	F1	Poles:	02	Created Date:	
Base:	RG	Rotation:	R	Insulation:	F	Eff. Date:	10-30-2008
Leads:	2#14,3#16	Literature:		Elec. Diagram:		Replaced By:	

Nameplate NP1257L							
CAT.NO.	L3608TM						
SPEC.	36F227W957						
HP	5						
VOLTS	230						
AMP	19.5						
RPM	3450						
FRAME	184T	HZ	60	PH	1		
SER.F.	1.00	CODE	G	DES	L	CL	F
NEMA-NOM-EFF	83	PF	99				
RATING	40C AMB-CONT						
CC				USABLE AT 208V			
DE	6206	ODE	6205				
ENCL	TEFC	SN					

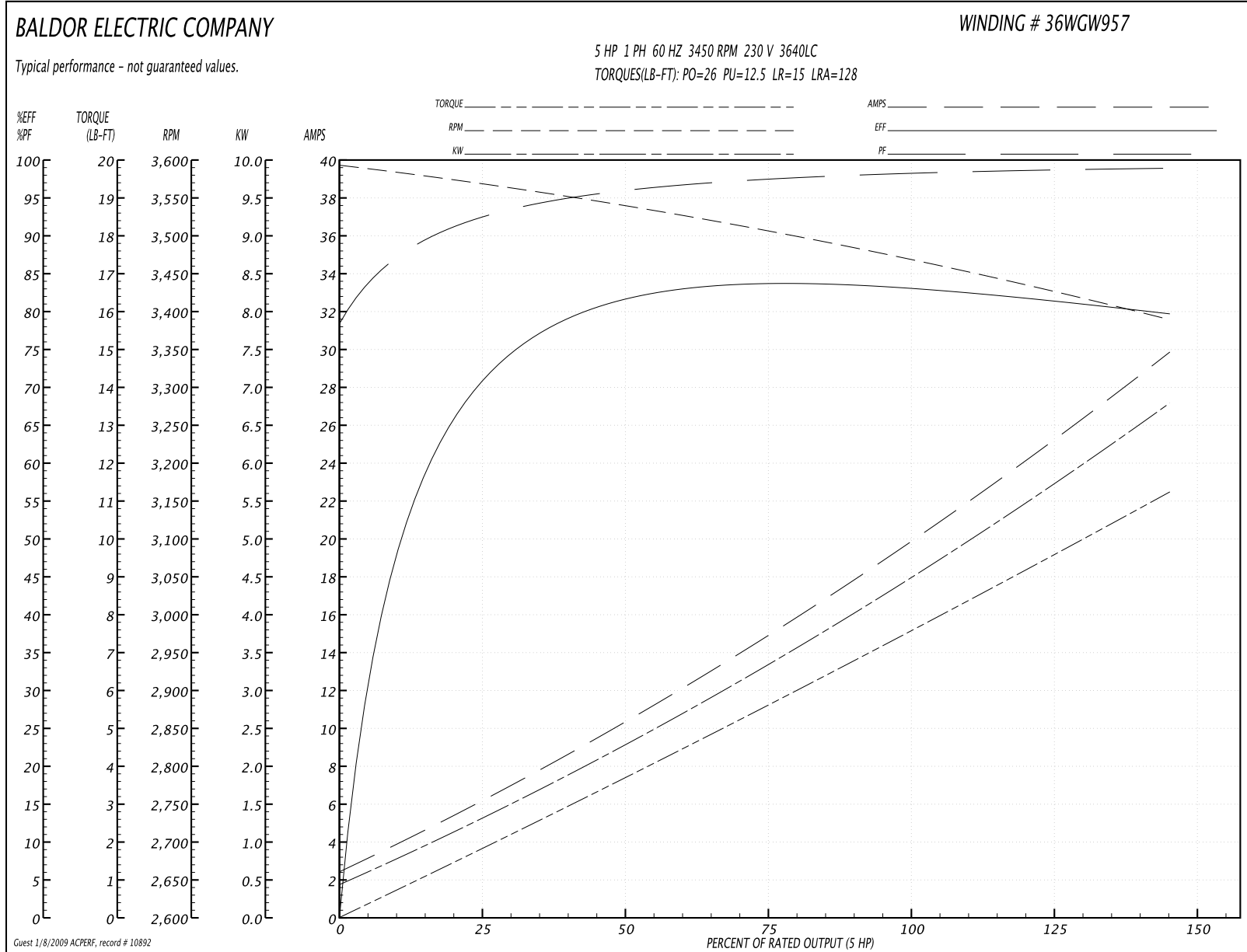
<b>Parts List</b>			
<b>Product ID</b>	<b>Description</b>	<b>Quantity</b>	<b>List Price</b>
SA034863	SA 36F227W957	1.000	614.00
RA030891	RA 36F227W957	1.000	512.00
OC3040F09SP	CYL OIL CAP 40MFD/370V	1.000	34.00
TPBRT25DB	THERMAL 1PH 1.25 MAN 120CWELDED	1.000	64.00
EC1161C06SP	ELEC CAP, 161-193 MFD, 250V, 2.06D X 4.	2.000	37.00
TP5059	GENERIC THERMAL KIT	1.000	5.00
36CB3004A02	36 CB 1.09 @ 6, 1.25 MTO @ 3	1.000	13.00
36GS1000SP	GASKET-CONDUIT BOX, .06 THICK #SV-330 LE	1.000	5.00
51XB1016A08	10-16X 1/2HXWSSLD SERTYB	2.000	2.00
11XW1032G06	10-32 X .38, TAPTITE II, HEX WSHR SLTD U	1.000	3.00
HA6015A09	THERMAL RETAINER	1.000	2.00
51XB1214A10	12-14 X 5/8HX WS SL SR TYBX	2.000	3.00
36EP3101A01SP	FR ENDPLATE, MACH	1.000	67.00
HW4500A01	1641B(ALEMITE)400 UNIV, GREASE FITT	1.000	2.00
13XT0832A07	8-32X7/16 TYP 23 PAN HD SLT DX	2.000	3.00
36CB3800SP	CAPACITOR COVER, CAST	1.000	35.00
36GS3000	GASKET, CAPACITOR COVER LEXIDE	1.000	2.00
51XB1016A05	10-16X5/16HX WA SL SR TYB (F/S)	2.000	2.00
10XN2520A12	1/4-20X 3/4 HEX HEAD CAP	2.000	2.00
HW5100A05	WVY WSHR F/205 & 304 BRGS	1.000	2.00
36EP3100A01SP	PU ENDPLATE, MACH	1.000	80.00
HW4500A01	1641B(ALEMITE)400 UNIV, GREASE FITT	1.000	2.00
XY2520A12	1/4-20 HEX NUT, DIRECTIONAL SERRATIONS	4.000	1.00
51XB1214A16	12-14X1.00 HXWSSLD SERTYB	1.000	2.00

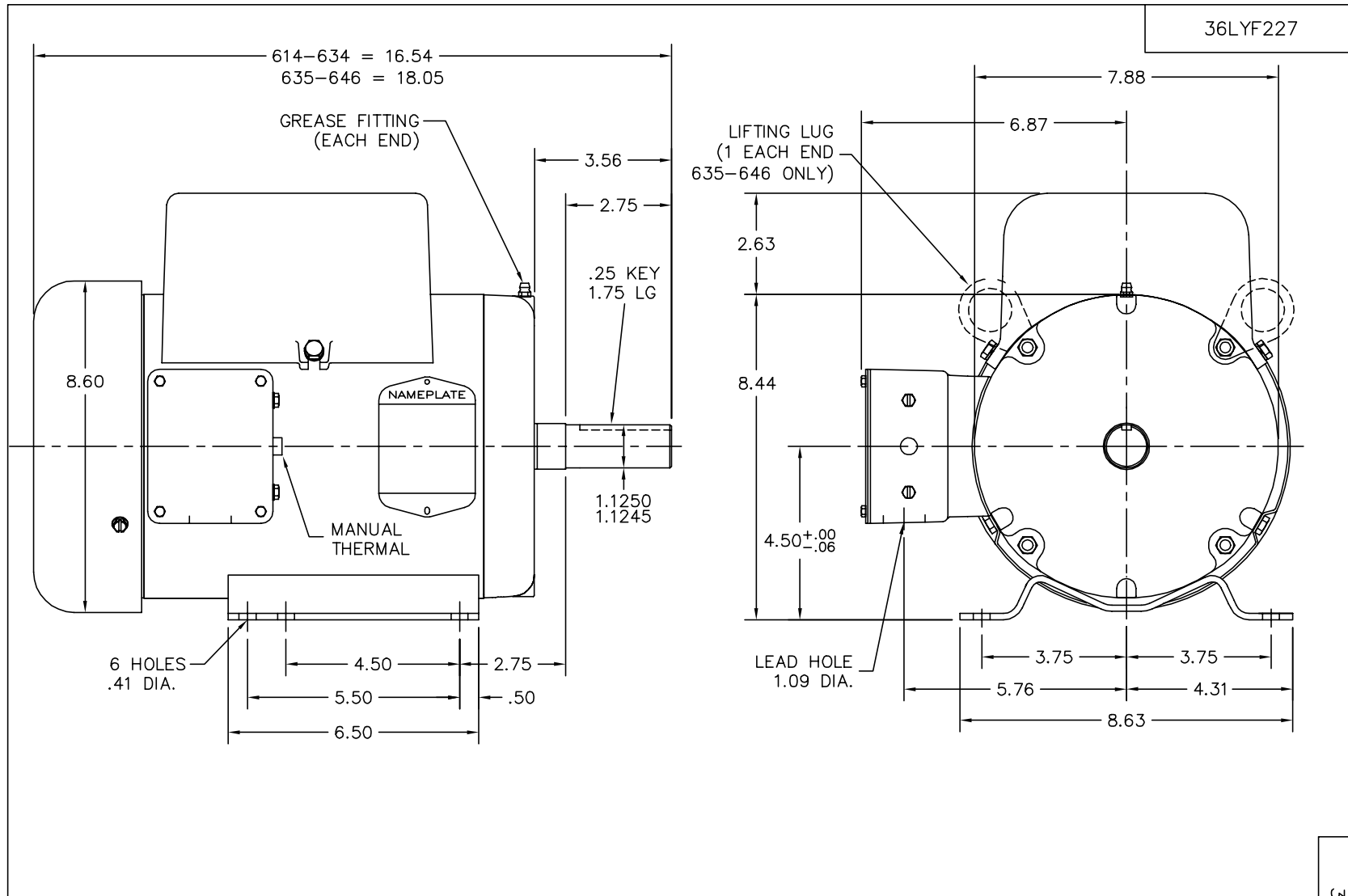
<b>Parts List (continued)</b>			
<b>Product ID</b>	<b>Description</b>	<b>Quantity</b>	<b>List Price</b>
51XW1032A06	10-32 X .38, TAPTITE II, HEX WSHR SLTD S	3.000	3.00
36CB4516	36 LIPPED CB LID	1.000	2.00
37GS1001SP	GASKET, CONDUIT BOX LID, .06 THICK LEXID	1.000	3.00
51XW0832A07	8-32 X .44, TAPTITE II, HEX WSHR SLTD SE	4.000	2.00
HW2501E16	KEY, 1/4 SQ X 1.750	1.000	2.00
HA7000A02	KEY RETAINER RING, 1 1/8 DIA, 1 3/8 DIA	1.000	2.00
10XF0440S02	04-40 X 1/8 TYPE F HEX HD STAINLESS STIC	2.000	2.00
HA6362	LIFTING LUG FOR 36 FRAME MOTORS.	2.000	2.00
HA7010A01	CAPACITOR RETENTION CLAMP, 6.562 LONG	1.000	2.00
MJ1000A02	GREASE, POLYREX EM EXXON	0.050	10.00
36FH4009A76	IEC FH W/GRSR,GRILL,DIMPLES, AUTOPHERETI	1.000	13.00
MG1000G27	PAINT- S9282E CHARCOAL GREY	0.022	4,000.00
LB1115	LABEL,LIFTING DEVICE (ON ROLLS0	1.000	2.00
SP5064A04	MODEL 36 TYPE LC STAT SWITCH LEAD ASSEMB	1.000	39.00
WD1000A15	3-520132-2 AMP FLAG (4M/RL NON-CANC/NON-	6.000	2.00
HA3101A40	THRUBOLT 1/4-20 X 12.687	4.000	2.00
35FN3002A04SP	EXT. FAN, PLASTIC, FOR .907/.905 JOURNAL	1.000	22.00
LB1119	WARNING LABEL	1.000	2.00
LB1125C01	STD (STOCK) CARTON LABEL BALDOR WITH FLA	1.000	2.00
LB1087	LABEL,MANUAL RESET (ROLL LABEL)	1.000	2.00
LC0002	CONNECTION LABEL	1.000	2.00
NP1257L	NP STD LASER ENGRAVED THERMAL PROTECTED,	1.000	25.00
36PA1001	PACKAGING GROUP	1.000	25.00

**Performance Data at 230V, 60Hz, 5.0HP (Typical performance - Not guaranteed values)**

General Characteristics							
<b>Full Load Torque:</b>	7.5 LB-FT			<b>Start Configuration:</b>	DOL		
<b>No-Load Current:</b>	2.3 Amps			<b>Break-Down Torque:</b>	26.0 LB-FT		
<b>Line-line Res. @ 25°C.:</b>	0.38 Ohms A Ph / 1.02 Ohms B Ph			<b>Pull-Up Torque:</b>	12.5 LB-FT		
<b>Temp. Rise @ Rated Load:</b>	67°C			<b>Locked-Rotor Torque:</b>	15.0 LB-FT		
<b>Temp. Rise @ S.F. Load:</b>	0°C			<b>Starting Current:</b>	128.0 Amps		
Load Characteristics							
<b>% of Rated Load:</b>	<b>25</b>	<b>50</b>	<b>75</b>	<b>100</b>	<b>125</b>	<b>150</b>	<b>S.F.</b>
<b>Power Factor:</b>	98.0	98.0	98.0	98.0	97.0	97.0	0.0
<b>Efficiency:</b>	66.4	81.5	83.9	83.9	82.1	79.2	0.0
<b>Speed:</b>	3565.0	3539.0	3507.0	3472.0	3430.0	3389.0	0.0
<b>Line Amperes:</b>	6.5	10.4	14.9	19.6	24.7	29.9	0.0

Performance Graph at 230V, 60Hz, 5.0HP (Typical performance - Not guaranteed values)





36LYF227

CUSTOMER IS RESPONSIBLE FOR DETERMINING THAT MOTOR PERFORMANCE IS SUITABLE IN THE APPLICATION.

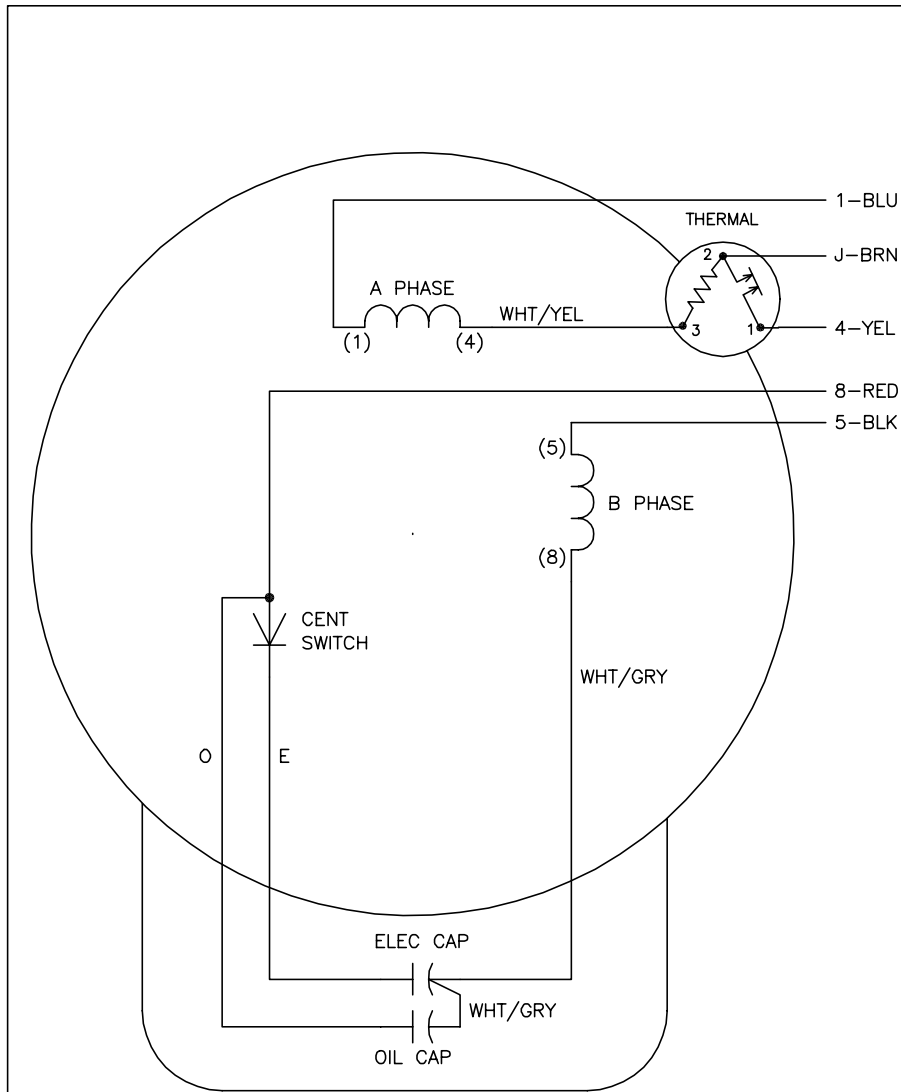
REV. DESC: 614-634 WAS 628-634			
REV. LTR: F	BY: RMP	REVISED: 12:30:21 06/02/2004	TDR: 334153
36LYF227		FILE: AAA00012693	REF: 36LYF227
		MTL: -	

**BALDOR ELECTRIC Co.**

STD HORZ 36LC 182-4T TEFC W/1.25 MTO

36LYF227

CD0002A02



	LINE A	LINE B	JOIN
STD	1,8	4	J,5
OPP	1,5	4	J,8

NOTES:

1. STANDARD ROTATION IS CCW FACING END OPPOSITE SHAFT EXTENSION.
2. MULTIPLE CAPACITORS ARE CONNECTED IN PARALLEL UNLESS OTHERWISE SPECIFIED.
3. LEAD COLORS ARE OPTIONAL. LEADS MUST ALWAYS BE NUMBERED AS SHOWN.

REV. DESC: REMOVE 2-TERMINAL THERMAL DETAIL, SEE CD0002A04			
REV. LTR: D	VERSION: 01	TDR: 000000360649	
Z0VZ00000	FILE: \AAA\00007\520	REVISED: 17:11:40 04/15/2005	
	MTL: -	BY: ENJOEPO	

**BALDOR ELECTRIC Co.**

TYPE LC, SV, REV, THERMAL, 5 LEADS

CD0002A02