



BALDOR® • *RELIANCE*

Product Information Packet

M3714T-9

10HP,1755RPM,3PH,60HZ,215T,3742M,TEFC,F1

Product Detail							
Revision:	P	Status:	PRD/A	Change #:		Proprietary:	No
Type:	AC	Prod Type:	3742M	Elec. Spec:	37WGY940	CD Diagram:	CD0005
Enclosure	TEFC	Mfg Plant:		Mech Spec:	37A001	Layout:	37LYA001
Frame:	215T	Mounting:	F1	Poles:	04	Created Date:	
Base:	RG	Rotation:	R	Insulation:	F	Eff. Date:	09-12-2008
Leads:	9#14	Literature:		Elec. Diagram:		Replaced By:	

Nameplate NP1256L									
CAT.NO.	M3714T-9								
SPEC.	37A001Y940								
HP	10								
VOLTS	230/460								
AMP	25/12.5								
RPM	1755								
FRAME	215T	HZ	60	PH	3				
SER.F.	1.15	CODE	J	DES	C	CLASS	F		
NEMA-NOM-EFF	87.5	PF	83						
RATING	40C AMB-CONT								
CC			USABLE AT 208V						
DE	6307	ODE	6206						
ENCL	TEFC	SN							

Parts List			
Product ID	Description	Quantity	List Price
SA042634	SA 37A001Y940	1.000	553.00
RA038428	RA 37A001Y940	1.000	461.00
HW3200A01	3/8-16X3/4 I-BLT WELDED F/S	1.000	3.00
37CB3006	37 CB CASTING W/1.38 LEAD HOLE @ 6:00	1.000	14.00
37GS1000SP	GASKET, CONDUIT BOX STD., .06 THICK LEXI	1.000	3.00
51XW2520A12	.25-20 X .75, TAPTITE II, HEX WSHR SLTD	2.000	2.00
11XW1032G06	10-32 X .38, TAPTITE II, HEX WSHR SLTD U	1.000	3.00
37EP3101A01SP	FR ENDPLATE,TEFC, 37 L&M, W/GREASER	1.000	119.00
HW4500A01	1641B(ALEMITE)400 UNIV, GREASE FITT	1.000	2.00
HW5100A06	W2420-025 WVY WSHR (WB)	1.000	2.00
37EP3100A01SP	STD PU ENDPLATE, ENCL,37 "T"-307 BRG, W/	1.000	102.00
HW4500A01	1641B(ALEMITE)400 UNIV, GREASE FITT	1.000	2.00
XY3118A12	5/16-18 HEX NUT DIRECTIONAL SERRATION	4.000	2.00
51XB1214A20	12-14X1.25 HXWSSLD SERTYB	1.000	2.00
07FH4007SP	IEC FH W/GRSR, NOTCH @ 6:00 & 3 FAN CVR	1.000	39.00
51XW1032A06	10-32 X .38, TAPTITE II, HEX WSHR SLTD S	3.000	3.00
37CB4516	CONDUIT BOX LID FOR OPEN AND GP 37 FRAME	1.000	2.00
37GS1008SP	37 GS FOR CB LID - LEXIDE	1.000	2.00
51XW0832A07	8-32 X .44, TAPTITE II, HEX WSHR SLTD SE	4.000	2.00
HW2501F21	KEY, 5/16 SQ X 2.375	1.000	4.00
HA7000A02	KEY RETAINER RING, 1 1/8 DIA, 1 3/8 DIA	1.000	2.00
LB1115	LABEL,LIFTING DEVICE (ON ROLLS0	1.000	2.00
10XF0440S02	04-40 X 1/8 TYPE F HEX HD STAINLESS STIC	2.000	2.00
MJ1000A02	GREASE, POLYREX EM EXXON	0.050	10.00

Parts List (continued)			
Product ID	Description	Quantity	List Price
37FN3002A01SP		1.000	27.00
MG1000G27	PAINT- S9282E CHARCOAL GREY	0.028	4,000.00
HA3104A17T	THRUBOLT .31-18 X 13.250 W/SHRINK TUBING	4.000	7.00
LB1125C01	STD (STOCK) CARTON LABEL BALDOR WITH FLA	1.000	2.00
LC0005E01	CONN.DIA./WARNING LABEL (LC0005/LB1119)	1.000	2.00
NP1256L	NP STD LASER ENGRAVED, UL CSA CC, W/O TH	1.000	3.00
36PA1001	PACKAGING GROUP	1.000	25.00

Performance Data at 460V, 60Hz, 10.0HP (Typical performance - Not guaranteed values)
General Characteristics

Full Load Torque:	30.0 LB-FT	Start Configuration:	DOL
No-Load Current:	5.8 Amps	Break-Down Torque:	106.0 LB-FT
Line-line Res. @ 25°C.:	1.01 Ohms A Ph / 0.0 Ohms B Ph	Pull-Up Torque:	54.0 LB-FT
Temp. Rise @ Rated Load:	74°C	Locked-Rotor Torque:	76.0 LB-FT
Temp. Rise @ S.F. Load:	87°C	Starting Current:	92.0 Amps

Load Characteristics

% of Rated Load:	25	50	75	100	125	150	S.F.
Power Factor:	46.0	68.0	79.0	84.0	87.0	88.0	0.0
Efficiency:	78.2	85.3	87.2	87.5	87.2	86.4	0.0
Speed:	1790.0	1781.0	1771.0	1760.0	1749.0	1736.0	0.0
Line Amperes:	6.5	8.1	10.3	12.7	15.5	18.5	14.4

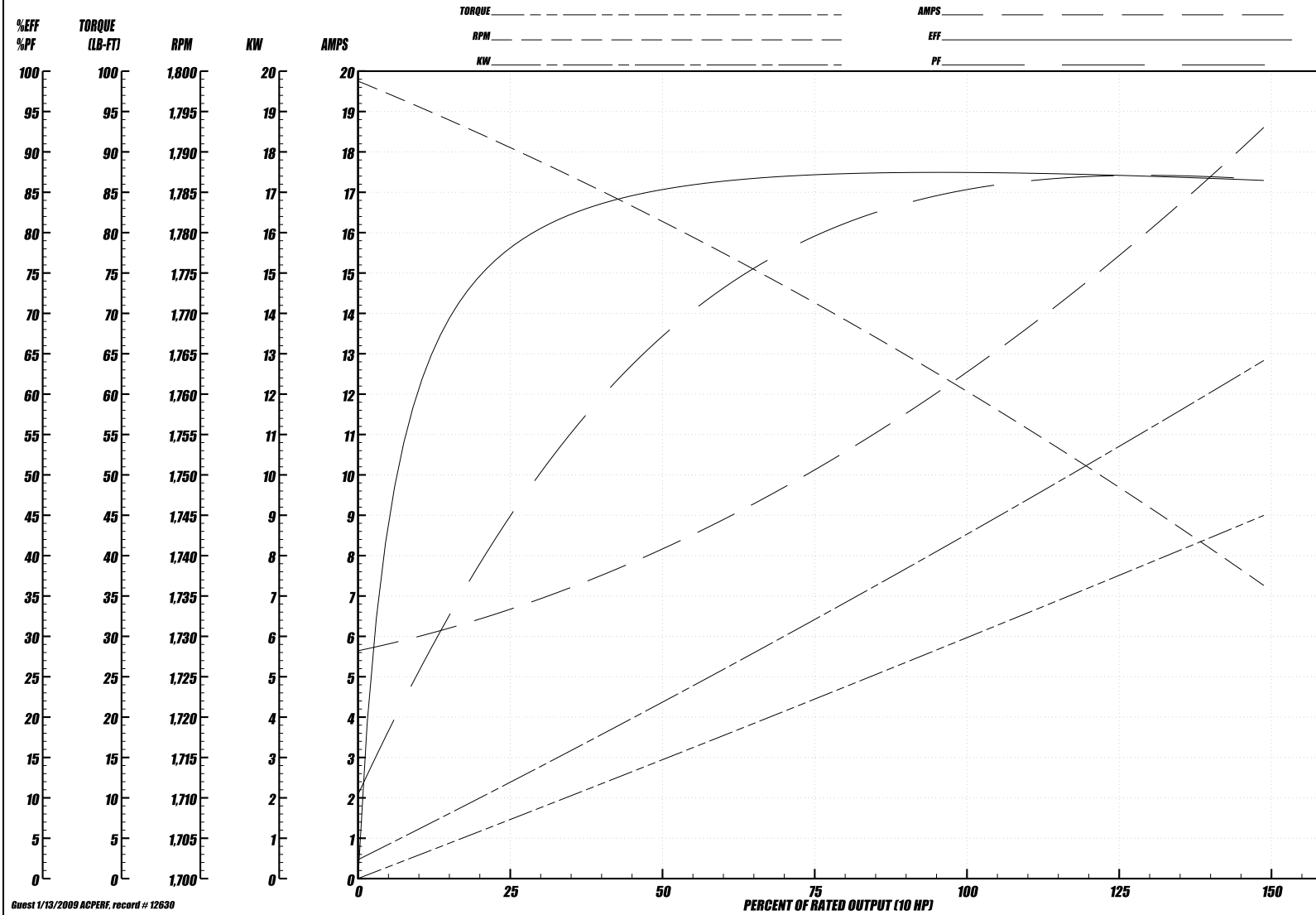
Performance Graph at 460V, 60Hz, 10.0HP (Typical performance - Not guaranteed values)

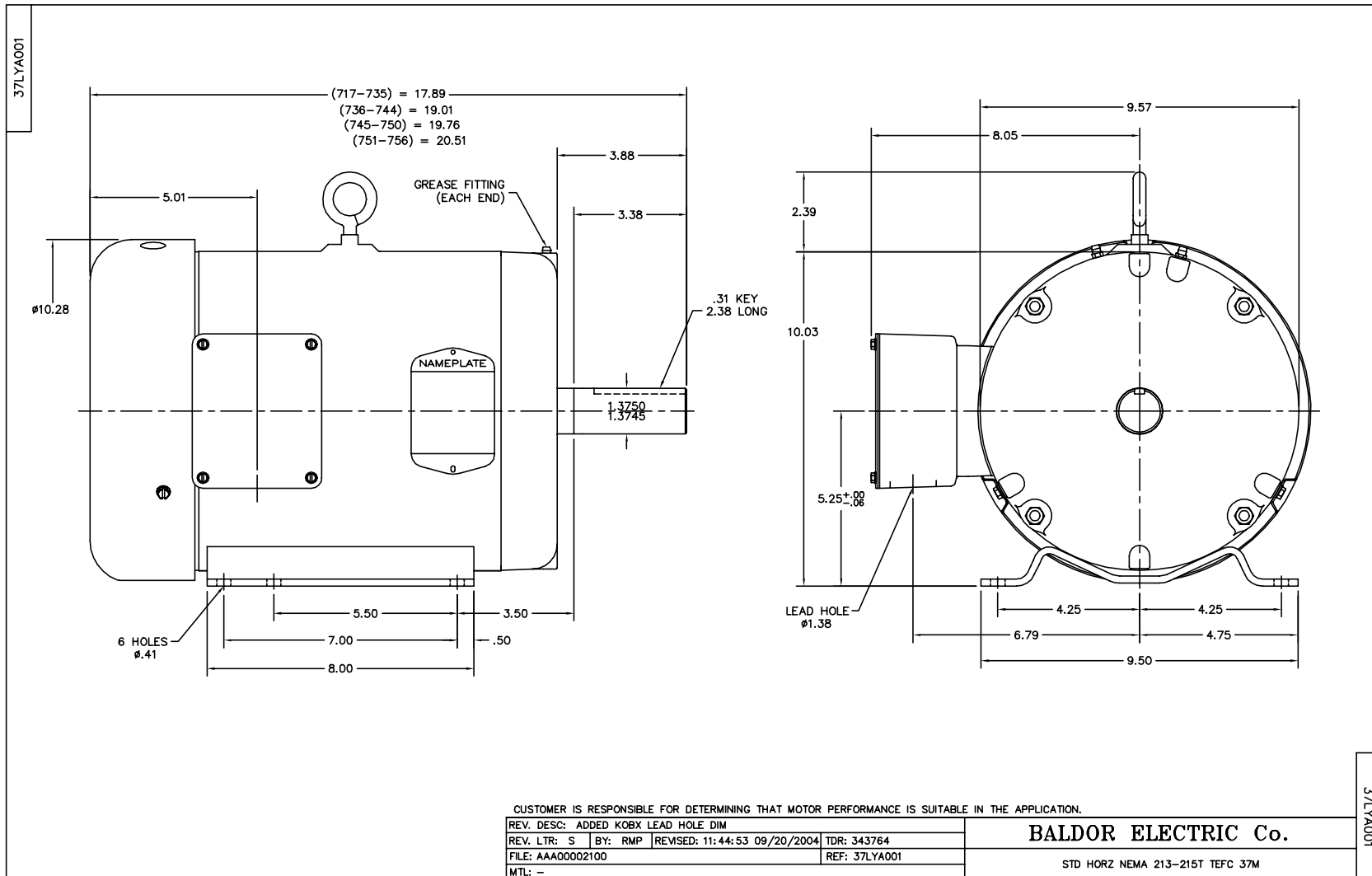
BALDOR ELECTRIC COMPANY

WINDING # 37WGY940

Typical performance - not guaranteed values.

10 HP 3 PH 60 HZ 1755 RPM 460 V 3742M
 TORQUES(LB-FT): P0=106 PU=54 LR=76 LRA=92

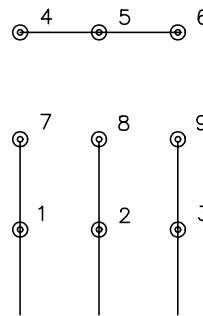




CD0005

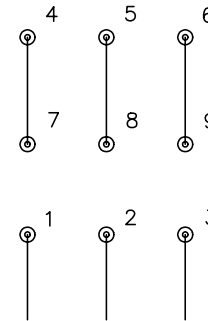


LOW VOLTAGE
(2Y)



LINE

HIGH VOLTAGE
(1Y)



LINE

NOTES:

1. INTERCHANGE ANY TWO LINE LEADS TO REVERSE ROTATION.
2. OPTIONAL THERMOSTATS ARE PROVIDED WHEN SPECIFIED.
3. ACTUAL NUMBER OF INTERNAL PARALLEL CIRCUITS MAY BE A MULTIPLE OF THOSE SHOWN ABOVE.
4. LEAD COLORS ARE OPTIONAL. LEADS MUST ALWAYS BE NUMBERED AS SHOWN.

REV. DESC: REVISE TO SHOW OPTIONAL COLORS			
REV. LTR: E	BY: JLP	REVISED: 01/19/99 10:15	TDR: 0171435
90000		FILE: AAA00005140	MDL: -
		MTL: -	

BALDOR ELECTRIC Co.

3PH, DV, 9 LEADS

CD0005