



# **BALDOR® • *RELIANCE***

## **Product Information Packet**

### **VL1309**

**1HP,3450RPM,1PH,60HZ,56C,3428L,OPEN,F1**

Product Detail									
Revision:	W	Status:	PRD/A	Change #:		Proprietary:	No		
Type:	AC	Prod Type:	3428L	Elec. Spec:	34WG3132	CD Diagram:	CD0001		
Enclosure	OPEN	Mfg Plant:		Mech Spec:	34F013	Layout:	34LYF013		
Frame:	56C	Mounting:	F1	Poles:	02	Created Date:			
Base:	N	Rotation:	R	Insulation:	B	Eff. Date:	07-28-2004		
Leads:	4#16,2#18	Literature:		Elec. Diagram:		Replaced By:			
Nameplate NP1256L									
CAT.NO.	VL1309								
SPEC.	34F13-3132								
HP	1								
VOLTS	115/230								
AMP	15/7.5								
RPM	3450								
FRAME	56C	HZ			60	PH	1		
SER.F.	1.25	CODE			L	DES	N	CLASS	B
NEMA-NOM-EFF	65	PF			65				
RATING	40C AMB-CONT								
CC				USABLE AT 208V	8.4				
DE	6203	ODE			6203				
ENCL	OPEN	SN							
	SFA 16/8								

<b>Parts List</b>			
<b>Product ID</b>	<b>Description</b>	<b>Quantity</b>	<b>List Price</b>
SA010003	SA 34F13-3132	1.000	185.00
RA006448	RA 34F13-3132	1.000	169.00
NS2512A01	INSULATOR, CONDUIT BOX X X	1.000	2.00
34CB3002A	CB CAST W/.88 DIA HOLE	1.000	13.00
51XB1016A07	10-16 X 7/16 HXWSSLD SERTYB	2.000	2.00
11XW1032G06	10-32 X .38, TAPTITE II, HEX WSHR SLTD U	1.000	3.00
34EP3210A03SP	FR ENDPLATE, MACH	1.000	52.00
SP1006A01	TERM. BOARD, MODE 35 SW X H-23655	1.000	7.00
51XW0832A07	8-32 X .44, TAPTITE II, HEX WSHR SLTD SE	2.000	2.00
NS2501A01	INSULATOR, CAPACITOR X	1.000	2.00
51XB1016A05	10-16X5/16HX WA SL SR TYB (F/S)	2.000	2.00
HW5100A03SP	WAVY WASHER (W1543-017)	1.000	2.00
34EP3401A01SP	PU ENDPLATE, MACH	1.000	63.00
34AD2000	BAFFLE PLATE, STAMPED	1.000	2.00
51XT0632A06	6-32X3/8 TY23 HXWS SLDSR	4.000	2.00
51XN1032A20	10-32 X 1 1/4 HX WS SL SR	2.000	2.00
34FH4000A11	DRIP COVER, STAMPED	1.000	22.00
51XW1032A06	10-32 X .38, TAPTITE II, HEX WSHR SLTD S	3.000	3.00
34CB4517	CB LID 4 MTG HOLES .22 DIA STAMPED, FOR	1.000	5.00
51XW0832A07	8-32 X .44, TAPTITE II, HEX WSHR SLTD SE	4.000	2.00
HW2501D13SP	KEY, 3/16 SQ X 1.375	1.000	2.00
HA7000A04	KEY RETAINER 0.625 DIA SHAFTS	1.000	2.00
34GS5003A01	FOAM SLEEVE, ID = 2 1/16" X 4 3/8"	1.000	2.00
MG1000G27	PAINT- S9282E CHARCOAL GREY	0.014	4,000.00

<b>Parts List (continued)</b>			
<b>Product ID</b>	<b>Description</b>	<b>Quantity</b>	<b>List Price</b>
10XF0440S02	04-40 X 1/8 TYPE F HEX HD STAINLESS STIC	2.000	2.00
EC1645A06SP	ELEC CAP, 645-774 MFD, 125V, 2.06D X 4.	1.000	31.00
SP5056A24	MODEL 34 TYPE L STATIONARY SWITCH WITH L	1.000	18.00
33CB4800A02	CAPACITOR COVER, STAMPED	1.000	3.00
HA3100A45	THRUBOLT 10-32 X 8.875	4.000	5.00
LB1125C01	STD (STOCK) CARTON LABEL BALDOR WITH FLA	1.000	2.00
LC0001A01	CONN LABEL / WARNING LABEL (LC0001 / LB1	1.000	2.00
NP1256L	NP STD LASER ENGRAVED, UL CSA CC, W/O TH	1.000	3.00
34PA1005	PACKING GROUP, BALDOR	1.000	10.00

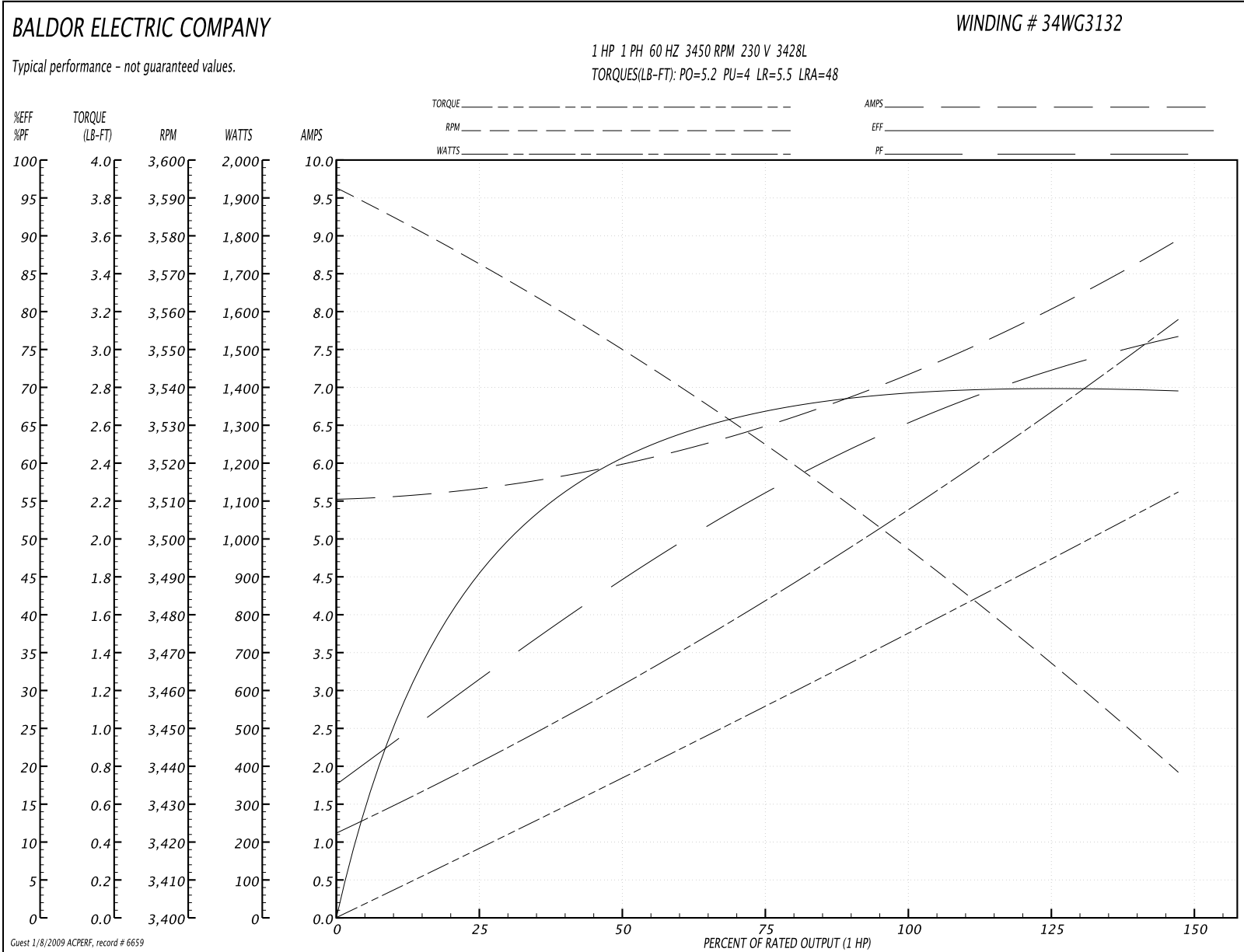
**Performance Data at 230V, 60Hz, 1.0HP (Typical performance - Not guaranteed values)**
**General Characteristics**

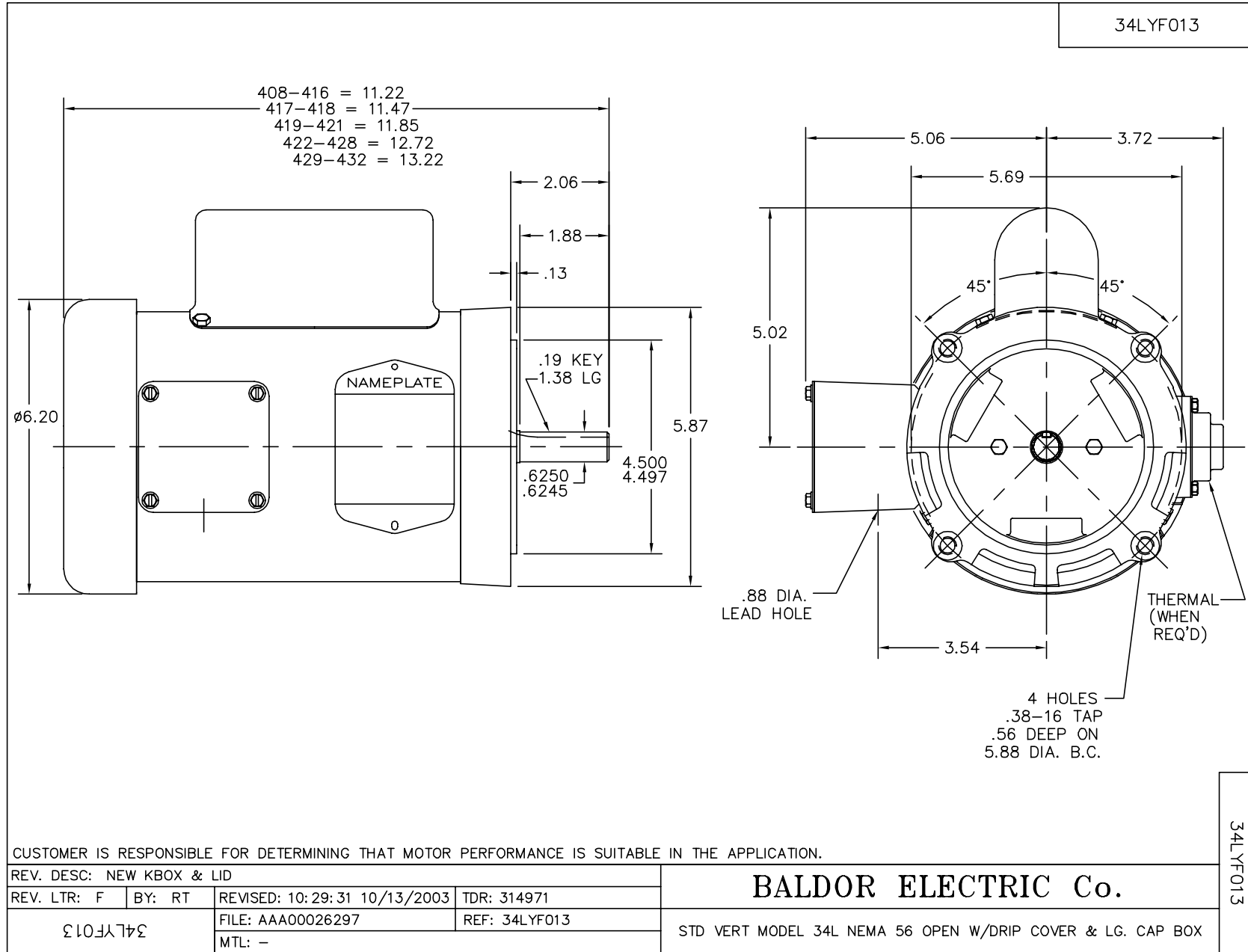
<b>Full Load Torque:</b>	1.5 LB-FT	<b>Start Configuration:</b>	DOL
<b>No-Load Current:</b>	5.5 Amps	<b>Break-Down Torque:</b>	5.2 LB-FT
<b>Line-line Res. @ 25°C.:</b>	1.77 Ohms A Ph / 1.69 Ohms B Ph	<b>Pull-Up Torque:</b>	4.0 LB-FT
<b>Temp. Rise @ Rated Load:</b>	39°C	<b>Locked-Rotor Torque:</b>	5.5 LB-FT
<b>Temp. Rise @ S.F. Load:</b>	45°C	<b>Starting Current:</b>	48.0 Amps

**Load Characteristics**

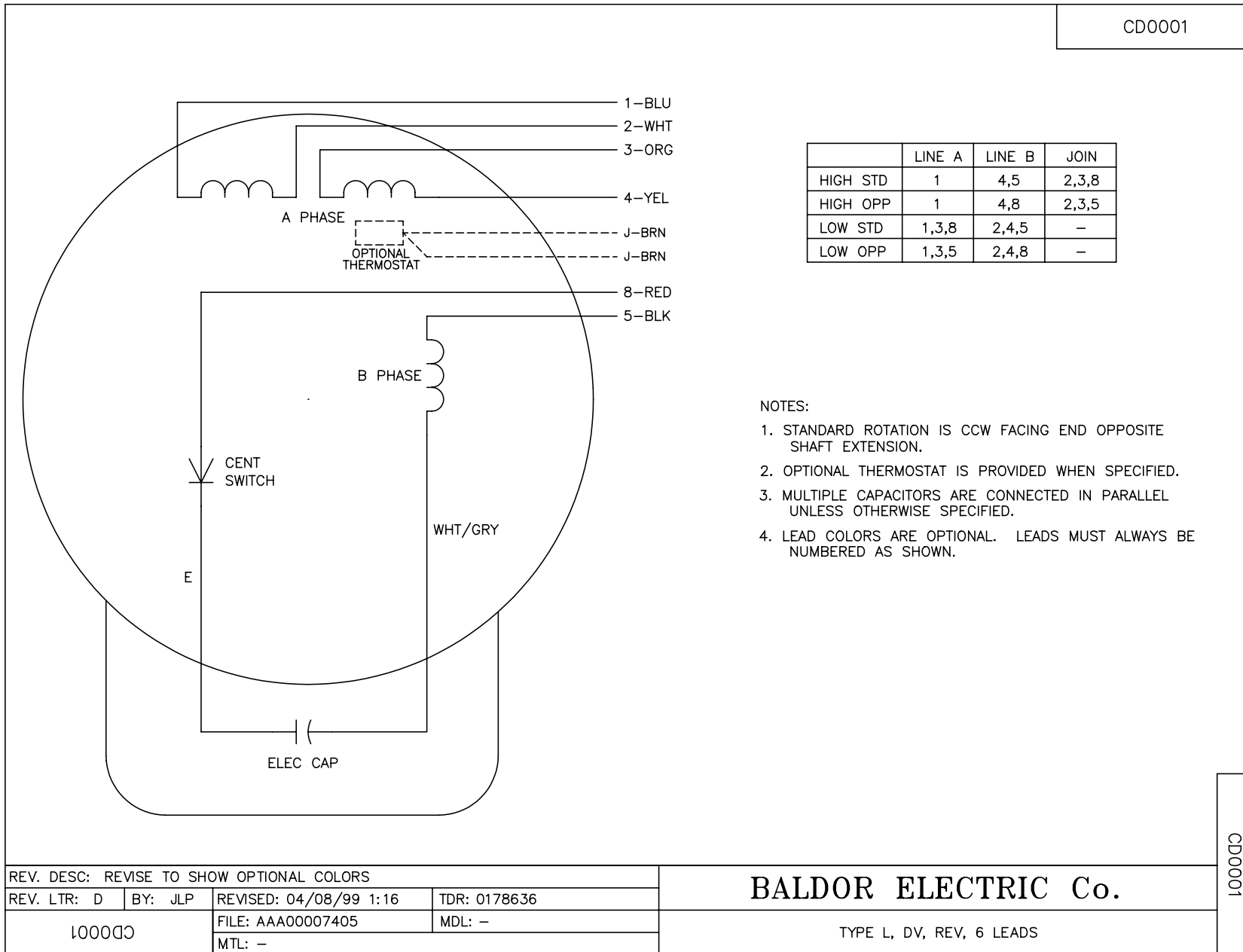
<b>% of Rated Load:</b>	<b>25</b>	<b>50</b>	<b>75</b>	<b>100</b>	<b>125</b>	<b>150</b>	<b>S.F.</b>
<b>Power Factor:</b>	34.0	47.0	57.0	66.0	72.0	76.0	72.0
<b>Efficiency:</b>	47.1	60.7	66.5	69.1	70.2	69.4	70.2
<b>Speed:</b>	3569.0	3548.0	3526.0	3497.0	3472.0	3436.0	3472.0
<b>Line Amperes:</b>	5.7	6.0	6.5	7.2	7.9	9.0	7.9

Performance Graph at 230V, 60Hz, 1.0HP (Typical performance - Not guaranteed values)





CD0001



NOTES:

1. STANDARD ROTATION IS CCW FACING END OPPOSITE SHAFT EXTENSION.
2. OPTIONAL THERMOSTAT IS PROVIDED WHEN SPECIFIED.
3. MULTIPLE CAPACITORS ARE CONNECTED IN PARALLEL UNLESS OTHERWISE SPECIFIED.
4. LEAD COLORS ARE OPTIONAL. LEADS MUST ALWAYS BE NUMBERED AS SHOWN.

REV. DESC: REVISE TO SHOW OPTIONAL COLORS			
REV. LTR: D	BY: JLP	REVISED: 04/08/99 1:16	TDR: 0178636
100000		FILE: AAA00007405	MDL: -
		MTL: -	

**BALDOR ELECTRIC Co.**

TYPE L, DV, REV, 6 LEADS

CD0001