



BALDOR® • *RELIANCE*

Product Information Packet

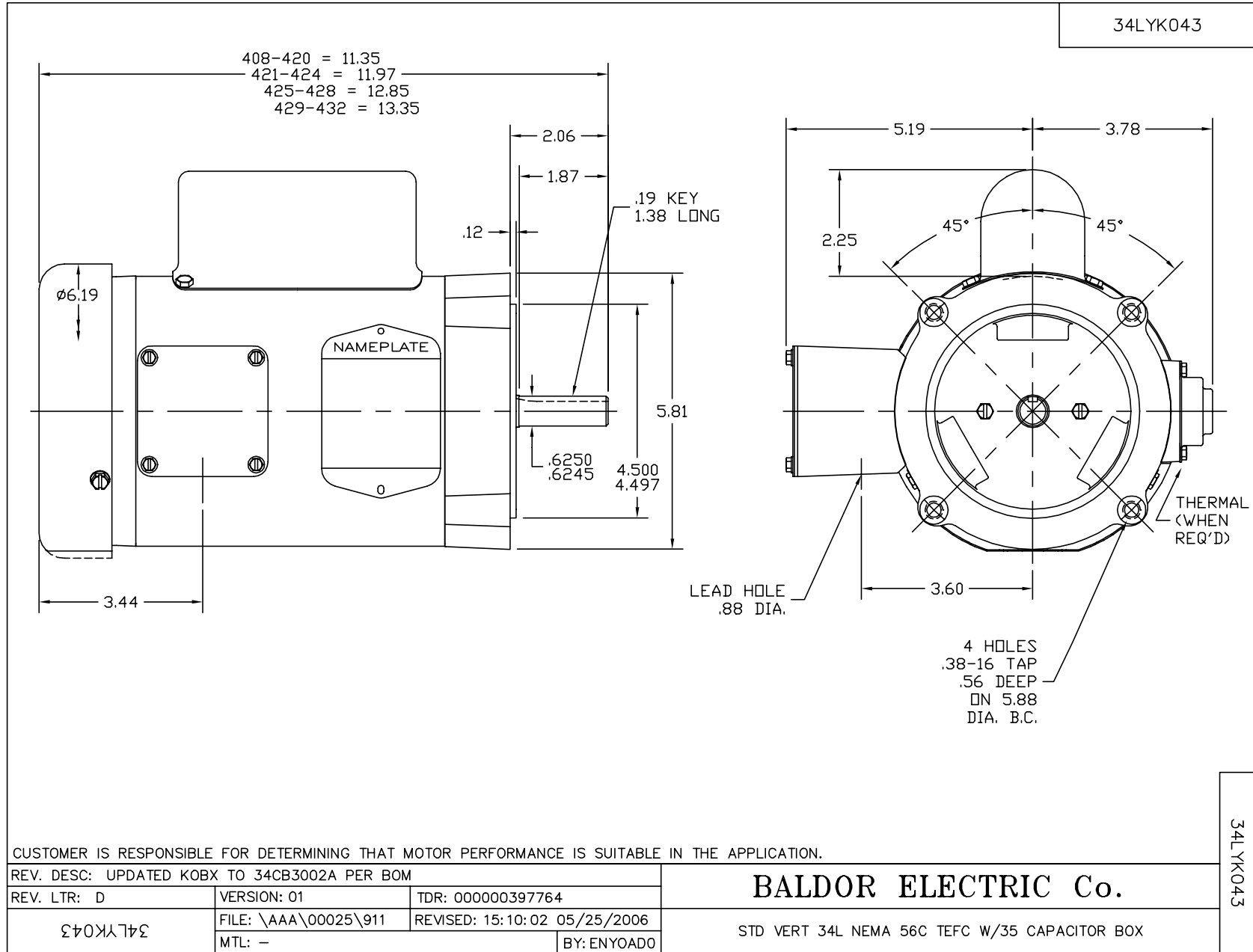
VL3506A

.75HP,3450RPM,1PH,60HZ,56C,3424L,TEFC,F1

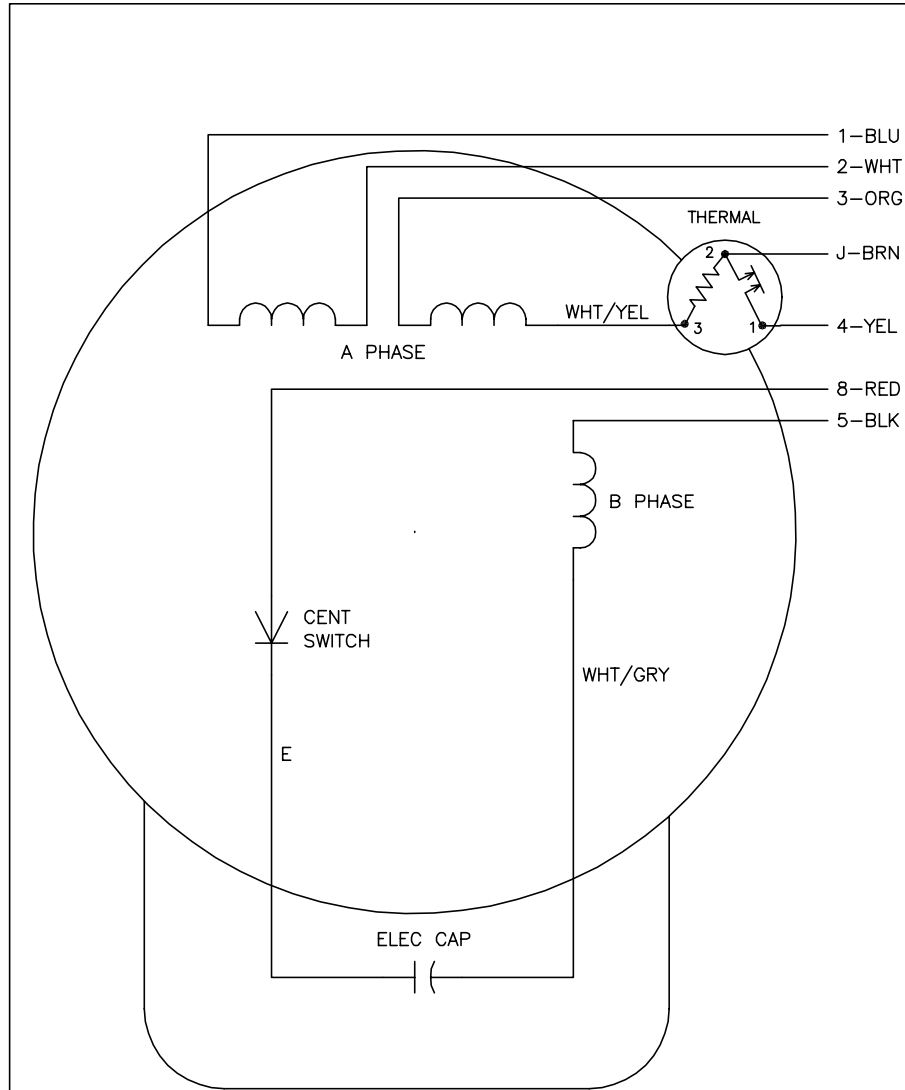
Product Detail									
Revision:	-	Status:	PRD/A	Change #:		Proprietary:	No		
Type:	AC	Prod Type:	3424L	Elec. Spec:	34WG3514	CD Diagram:	CD0008		
Enclosure	TEFC	Mfg Plant:		Mech Spec:	34K043	Layout:	34LYK043		
Frame:	56C	Mounting:	F1	Poles:	02	Created Date:	01-13-2006		
Base:	N	Rotation:	R	Insulation:	B	Eff. Date:	01-17-2006		
Leads:	6#18,1#14	Literature:		Elec. Diagram:		Replaced By:			
Nameplate NP1257L									
CAT.NO.	VL3506A								
SPEC.	34K043-3514								
HP	.75								
VOLTS	115/230								
AMP	9.6/4.8								
RPM	3450								
FRAME	56C	HZ			60	PH	1		
SER.F.	1.25	CODE			K	DES	N	CL	B
NEMA-NOM-EFF	66	PF			74				
RATING	40C AMB-CONT								
CC				USABLE AT 208V					
DE	6203	ODE			6203				
ENCL	TEFC	SN							
	SFA 11.4/5.7								

Parts List			
Product ID	Description	Quantity	List Price
SA137507	SA 34K043-3514	1.000	213.00
RA127113	RA 34K043-3514	1.000	178.00
EC1400A03SP	ELEC CAP, 400-480 MFD, 125V, 1.81D X 3.	1.000	23.00
NS2512A01	INSULATOR, CONDUIT BOX X X	1.000	2.00
34CB3002A	CB CAST W/.88 DIA HOLE	1.000	13.00
34GS1029A01	GASKET, CONDUIT BOX	1.000	2.00
51XB1016A07	10-16 X 7/16 HXWSSLD SERTYB	2.000	2.00
11XW1032G06	10-32 X .38, TAPTITE II, HEX WSHR SLTD U	1.000	3.00
34EP3102A01SP	FR ENDPLATE, MACH	1.000	68.00
51XW0832A07	8-32 X .44, TAPTITE II, HEX WSHR SLTD SE	2.000	2.00
NS2501A01	INSULATOR, CAPACITOR X	1.000	2.00
51XB1016A05	10-16X5/16HX WA SL SR TYB (F/S)	2.000	2.00
HW5100A03SP	WAVY WASHER (W1543-017)	1.000	2.00
34EP3300A24SP	PU ENDPLATE, MACH	1.000	63.00
51XN1032A20	10-32 X 1 1/4 HX WS SL SR	2.000	2.00
34FN3002A01SP	EXTERNAL FAN, PLASTIC, .637/.639 HUB W/	1.000	14.00
34FH4002A01SP	IEC FH NO GREASER	1.000	23.00
51XW1032A06	10-32 X .38, TAPTITE II, HEX WSHR SLTD S	3.000	3.00
34CB4517	CB LID 4 MTG HOLES .22 DIA STAMPED, FOR	1.000	5.00
34GS1031A01	GASKET, FLAT CONDUIT BOX LID (LEXIDE)	1.000	2.00
51XW0832A07	8-32 X .44, TAPTITE II, HEX WSHR SLTD SE	4.000	2.00
HW2501D13SP	KEY, 3/16 SQ X 1.375	1.000	2.00
HA7000A04	KEY RETAINER 0.625 DIA SHAFTS	1.000	2.00
MG1000G27	PAINT- S9282E CHARCOAL GREY	0.014	4,000.00

Parts List (continued)			
Product ID	Description	Quantity	List Price
10XF0440S02	04-40 X 1/8 TYPE F HEX HD STAINLESS STIC	2.000	2.00
33CB4800A02	CAPACITOR COVER, STAMPED	1.000	3.00
35GS3001A02	GASKET, CA.COVER, 5.38 LONG .06 CS301	1.000	4.00
SP5056A24	MODEL 34 TYPE L STATIONARY SWITCH WITH L	1.000	18.00
HA3100A44	THRUBOLT 10-32 X 8.000	4.000	2.00
LB1118	LABEL,WARNING (ROLL LABEL)	1.000	2.00
LB1125C01	STD (STOCK) CARTON LABEL BALDOR WITH FLA	1.000	2.00
LC0008	1PH,DV,7-LEAD,THERMAL,CONNECTION DIAGRAM	1.000	2.00
NP1257L	NP STD LASER ENGRAVED THERMAL PROTECTED,	1.000	25.00
34PA1002	PACKING GROUP, BALDOR	1.000	13.00
LB5040	INSTRUCTION TAG, AC & DC	1.000	2.00



CD0008



	LINE A	LINE B	JOIN	JOIN
HIGH STD	1	4	2,3,8	J,5
HIGH OPP	1	4	2,3,5	J,8
LOW STD	1,3,8	4	-	2,J,5
LOW OPP	1,3,5	4	-	2,J,8

NOTES:

1. STANDARD ROTATION IS CCW FACING END OPPOSITE SHAFT EXTENSION.
2. MULTIPLE CAPACITORS ARE CONNECTED IN PARALLEL UNLESS OTHERWISE SPECIFIED.
3. LEAD COLORS ARE OPTIONAL. LEADS MUST ALWAYS BE NUMBERED AS SHOWN.

REV. DESC: REMOVE 2-TERMINAL THERMAL DETAIL, SEE CD0008A02		
REV. LTR: F	VERSION: 01	TDR: 000000360649
80000	FILE: \AAA\00007\408	REVISED: 10:56:54 04/18/2005
	MTL: -	BY: ENJOEPO

BALDOR ELECTRIC Co.

TYPE L, DV, REV, THERMAL, 7 LEADS

CD0008