



BALDOR® • *RELIANCE*

Product Information Packet

VM8012

1HP,3450RPM,3PH,60HZ,56C,3416M,TEFC,F1

Product Detail									
Revision:	Q	Status:	PRD/A	Change #:		Proprietary:	No		
Type:	AC	Prod Type:	3416M	Elec. Spec:	34WG0282	CD Diagram:	CD0005		
Enclosure	TEFC	Mfg Plant:		Mech Spec:	34K038	Layout:	34LYK038		
Frame:	56C	Mounting:	F1	Poles:	02	Created Date:			
Base:	N	Rotation:	R	Insulation:	F	Eff. Date:	02-21-2007		
Leads:	9#18	Literature:		Elec. Diagram:		Replaced By:			
Nameplate NP1261E									
CAT.NO.	VM8012								
SPEC.	34K38-282								
HP	1								
VOLTS	230/460								
AMP	3.6/1.8								
RPM	3450								
FRAME	56C	HZ	60			PH	3		
SER.F.	1.25	CODE	H			DES	B	CL	F
NEMA-NOM-EFF	75.5	PF	71						
RATING	40C AMB-CONT								
CC					USABLE AT 208V	4.1			
DE	6203	ODE	6203						
ENCL	TEFC	SN							
	SFA 4/2								

Parts List			
Product ID	Description	Quantity	List Price
SA008152	SA 34K38-282	1.000	352.00
RA004599	RA 34K38-282	1.000	293.00
NS2512A01	INSULATOR, CONDUIT BOX X X	1.000	2.00
34GS1012	GASKET, CONDUIT BOX NEOP	1.000	2.00
51XB1016A07	10-16 X 7/16 HXWSSLD SERTYB	2.000	2.00
11XW1032G06	10-32 X .38, TAPTITE II, HEX WSHR SLTD U	1.000	3.00
HW3001A01	D3019 BRASS WASHER(STIMP)	1.000	2.00
HW5100A03SP	WAVY WASHER (W1543-017)	1.000	2.00
51XN1032A20	10-32 X 1 1/4 HX WS SL SR	2.000	2.00
34FN3002A01SP	EXTERNAL FAN, PLASTIC, .637/.639 HUB W/	1.000	14.00
51XW1032A06	10-32 X .38, TAPTITE II, HEX WSHR SLTD S	3.000	3.00
34GS1007	GASKET, CONDUIT BOX LID MODEL 34 (BLACK	1.000	2.00
51XW0832A07	8-32 X .44, TAPTITE II, HEX WSHR SLTD SE	4.000	2.00
HA1005A05SP	35-309 SLINGER	1.000	2.00
HW2502D13	SS KEY, 3/16 SQ X 1.375	1.000	2.00
HA7000A04	KEY RETAINER 0.625 DIA SHAFTS	1.000	2.00
MJ5001A01	46-665 RED SEALER	0.001	57.00
34CB1000A01G	KO BOX, MACH, W/POWDER COAT & .50 N.P.T.	1.000	27.00
34EP1100A03G	FR ENDPLATE MACH, COATED	1.000	49.00
34EP1300A11G	PU ENDPLATE MACH, COATED	1.000	58.00
34FH4002A01SP	IEC FH NO GREASER	1.000	23.00
34CB4512G	GRAY POWDER COAT 34CB4512 LID	1.000	2.00
MG1025G05	PAINT DRK MET.GRAY,W/ACTIVATOR	0.014	182.00
10XF0440S02	04-40 X 1/8 TYPE F HEX HD STAINLESS STIC	2.000	2.00

Parts List (continued)			
Product ID	Description	Quantity	List Price
LB1000	LABEL, DIRTY DUTY	1.000	10.00
HA3100A12	THRUBOLT 10-32 X 7.375	4.000	2.00
LB1125C01	STD (STOCK) CARTON LABEL BALDOR WITH FLA	1.000	2.00
LC0005E01	CONN.DIA./WARNING LABEL (LC0005/LB1119)	1.000	2.00
NP1261E	STD NP SS W/O THRM W/UL & CSA LOGO, CC,	1.000	
34PA1002	PACKING GROUP, BALDOR	1.000	13.00

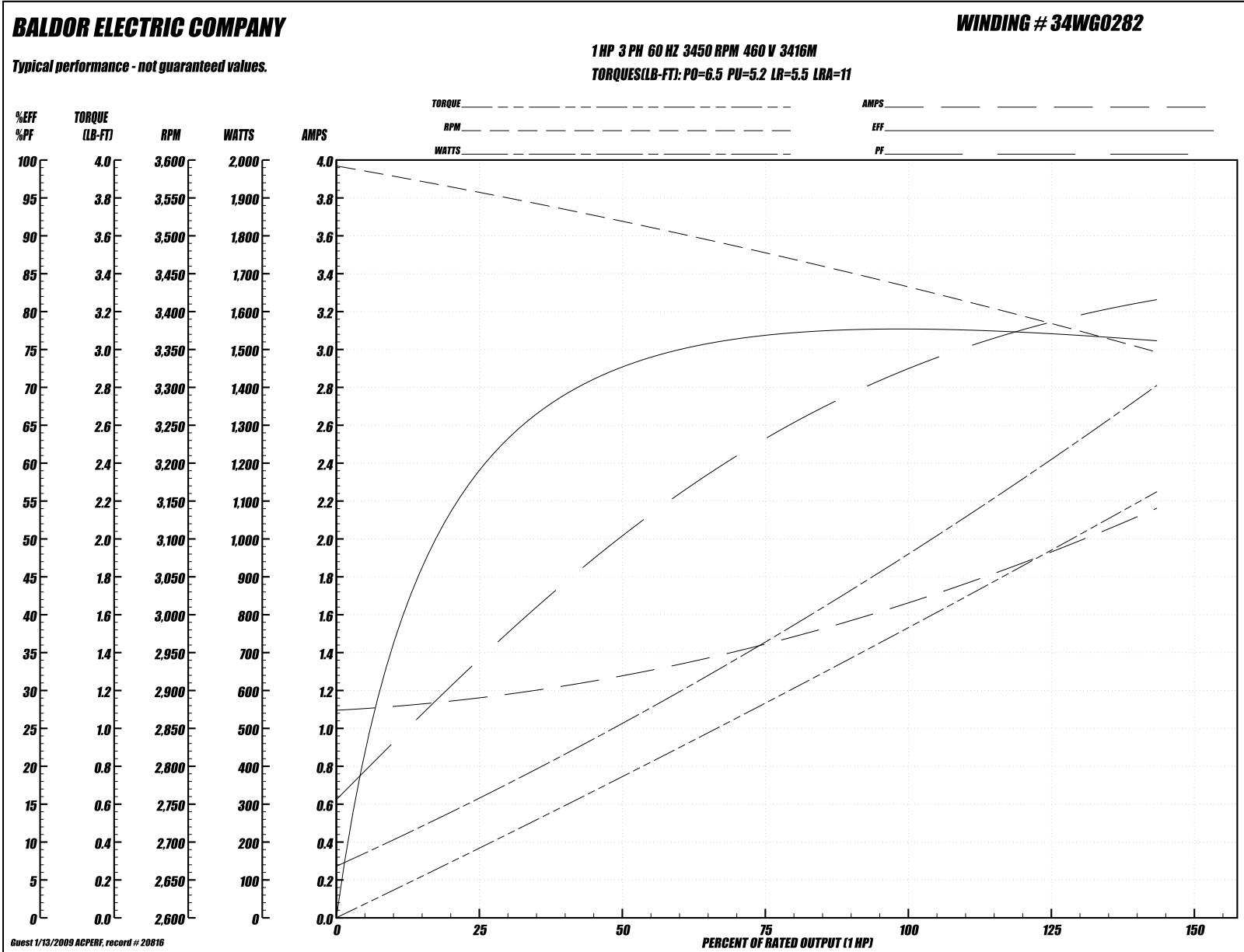
Performance Data at 460V, 60Hz, 1.0HP (Typical performance - Not guaranteed values)
General Characteristics

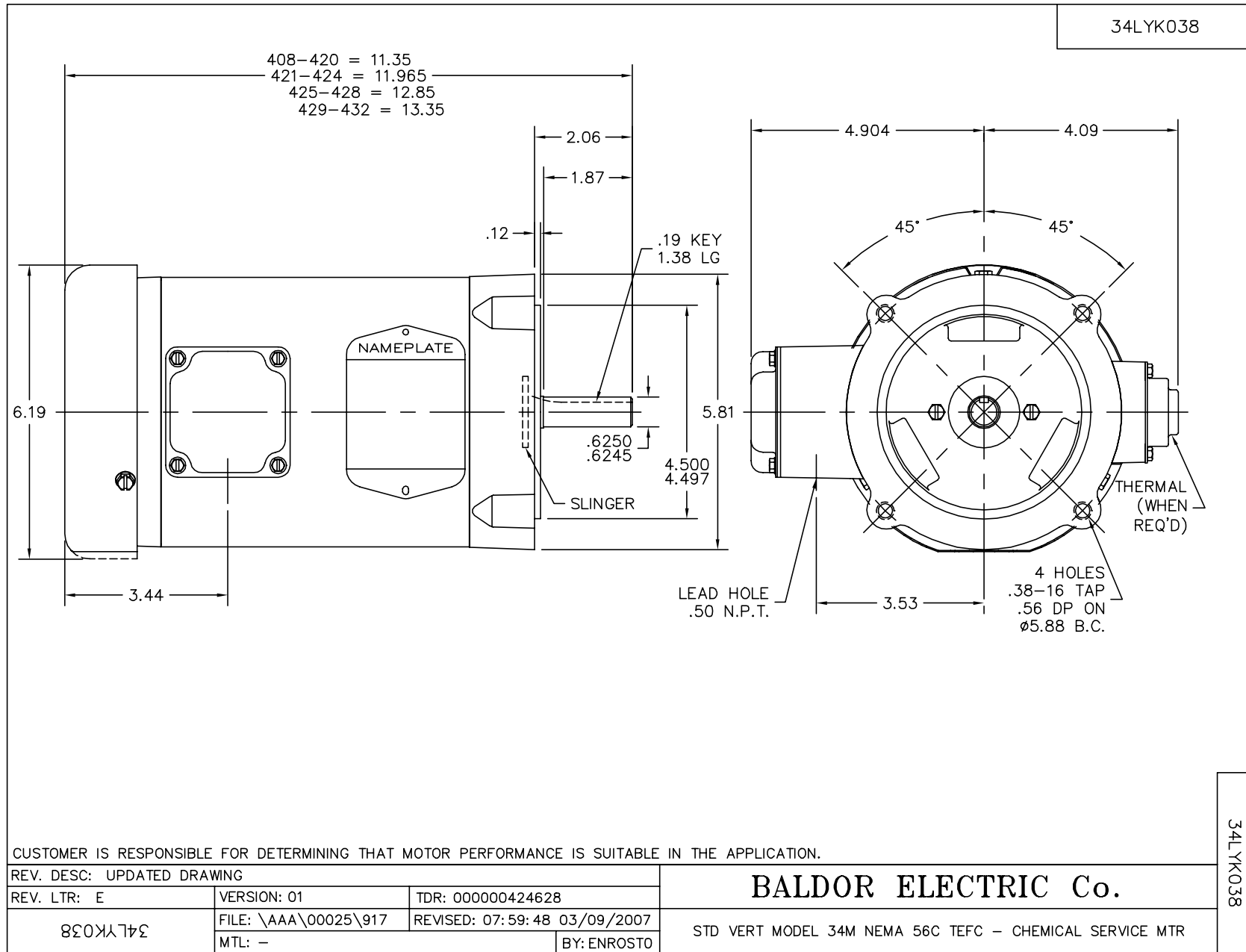
Full Load Torque:	1.5 LB-FT	Start Configuration:	DOL
No-Load Current:	1.1 Amps	Break-Down Torque:	6.5 LB-FT
Line-line Res. @ 25°C.:	16.7 Ohms A Ph / 0.0 Ohms B Ph	Pull-Up Torque:	5.2 LB-FT
Temp. Rise @ Rated Load:	71°C	Locked-Rotor Torque:	5.5 LB-FT
Temp. Rise @ S.F. Load:	85°C	Starting Current:	11.0 Amps

Load Characteristics

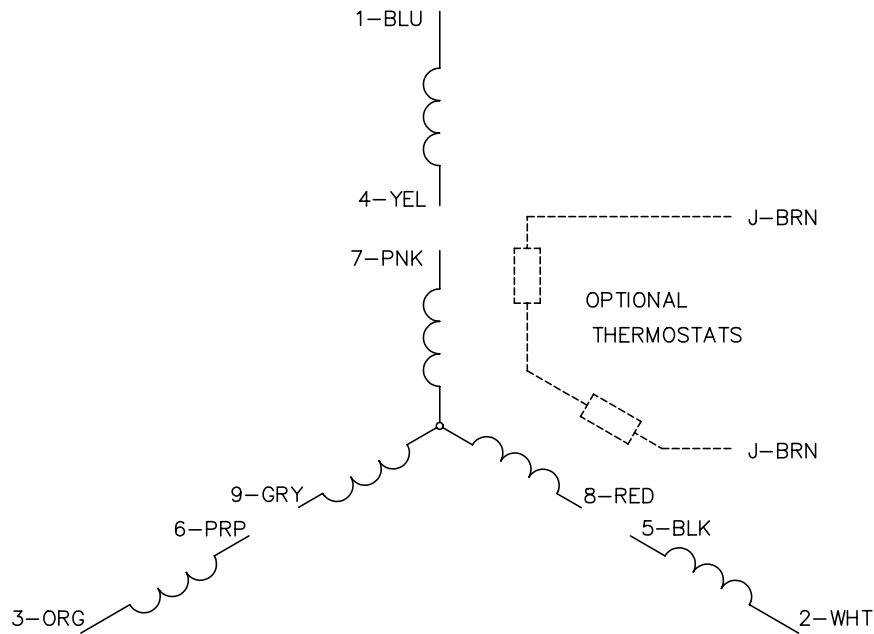
% of Rated Load:	25	50	75	100	125	150	S.F.
Power Factor:	37.0	53.0	68.0	76.0	77.0	76.0	77.0
Efficiency:	61.2	72.1	76.8	77.7	77.2	76.2	77.2
Speed:	3558.0	3524.0	3476.0	3434.0	3390.0	3349.0	3390.0
Line Amperes:	1.17	1.25	1.45	1.65	1.9	2.15	1.9

Performance Graph at 460V, 60Hz, 1.0HP (Typical performance - Not guaranteed values)

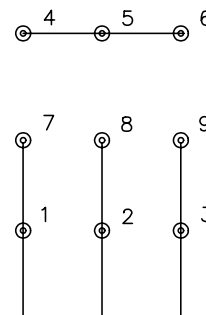




CD0005

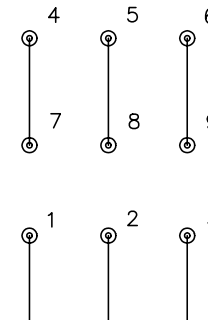


LOW VOLTAGE
(2Y)



LINE

HIGH VOLTAGE
(1Y)



LINE

NOTES:

1. INTERCHANGE ANY TWO LINE LEADS TO REVERSE ROTATION.
2. OPTIONAL THERMOSTATS ARE PROVIDED WHEN SPECIFIED.
3. ACTUAL NUMBER OF INTERNAL PARALLEL CIRCUITS MAY BE A MULTIPLE OF THOSE SHOWN ABOVE.
4. LEAD COLORS ARE OPTIONAL. LEADS MUST ALWAYS BE NUMBERED AS SHOWN.

REV. DESC: REVISE TO SHOW OPTIONAL COLORS			
REV. LTR: E	BY: JLP	REVISED: 01/19/99 10:15	TDR: 0171435
900000		FILE: AAA00005140	MDL: -
		MTL: -	

BALDOR ELECTRIC Co.

3PH, DV, 9 LEADS

CD0005