



BALDOR® • *RELIANCE*

Product Information Packet

WCM3709T

7.5HP,3450RPM,3PH,60HZ,213TCZ,3723M,TEFC

Product Detail							
Revision:	U	Status:	PRD/A	Change #:		Proprietary:	No
Type:	AC	Prod Type:	3723M	Elec. Spec:	37WGX075	CD Diagram:	CD0005
Enclosure	TEFC	Mfg Plant:		Mech Spec:	37N046	Layout:	37LYN046
Frame:	213TCZ	Mounting:	F1	Poles:	02	Created Date:	
Base:	RG	Rotation:	R	Insulation:	F	Eff. Date:	09-03-2006
Leads:	9#14	Literature:		Elec. Diagram:		Replaced By:	

Nameplate NP1256L									
CAT.NO.	WCM3709T								
SPEC.	37N46X75								
HP	7 1/2								
VOLTS	208-230/460								
AMP	21-18.8/9.4								
RPM	3450								
FRAME	213TCZ	HZ	60	PH	3				
SER.F.	1.15	CODE	J	DES	B	CLASS	F		
NEMA-NOM-EFF	84	PF	90						
RATING	40C AMB-CONT								
CC		USABLE AT 208V	21						
DE	6309	ODE	6206						
ENCL	TEFC	SN							

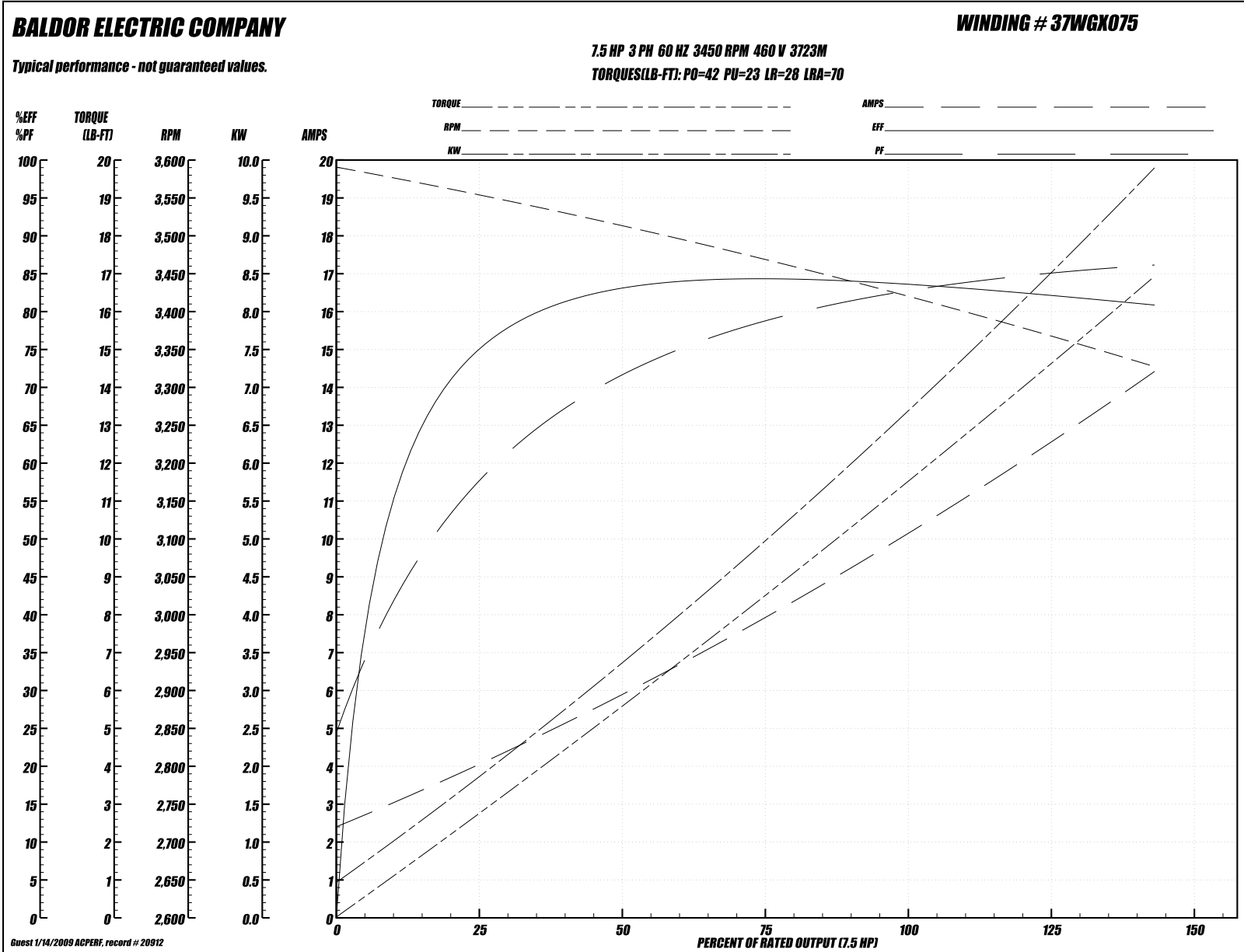
Parts List			
Product ID	Description	Quantity	List Price
SA033184	SA 37N46X75	1.000	589.00
RA029215	RA 37N46X75	1.000	491.00
HW3200A01	3/8-16X3/4 I-BLT WELDED F/S	1.000	3.00
37CB3006	37 CB CASTING W/1.38 LEAD HOLE @ 6:00	1.000	14.00
37GS1000SP	GASKET, CONDUIT BOX STD., .06 THICK LEXI	1.000	3.00
51XW2520A12	.25-20 X .75, TAPTITE II, HEX WSHR SLTD	2.000	2.00
11XW1032G06	10-32 X .38, TAPTITE II, HEX WSHR SLTD U	1.000	3.00
37EP3101A29	SPL FR.EP.37 L & M FRAME-TEFC-W/GREASER	1.000	127.00
HW4500A01	1641B(ALEMITE)400 UNIV, GREASE FITT	1.000	2.00
HW4500A17	317400 ALEMITE GREASE RELIEF	1.000	4.00
HW5100A06	W2420-025 WVY WSHR (WB)	1.000	2.00
37EP3401T10	EP PU ENCL 309 BRG W/GRSR & RELIEF, META	1.000	58.00
HW4500A01	1641B(ALEMITE)400 UNIV, GREASE FITT	1.000	2.00
HW4500A17	317400 ALEMITE GREASE RELIEF	1.000	4.00
10XN2520A36	1/4-20X 2 1/4 HEX HD X	4.000	2.00
XY3118A12	5/16-18 HEX NUT DIRECTIONAL SERRATION	4.000	2.00
51XB1214A20	12-14X1.25 HXWSSLD SERTYB	1.000	2.00
07FH4007SP	IEC FH W/GRSR, NOTCH @ 6:00 & 3 FAN CVR	1.000	39.00
51XW1032A06	10-32 X .38, TAPTITE II, HEX WSHR SLTD S	3.000	3.00
37CB4506	37 CB LID	1.000	6.00
37GS1008SP	37 GS FOR CB LID - LEXIDE	1.000	2.00
51XW0832A07	8-32 X .44, TAPTITE II, HEX WSHR SLTD SE	4.000	2.00
HA2009A02	37-3282 SL ANOD.ALUM(AUTO	1.000	37.00
HW2501D13SP	KEY, 3/16 SQ X 1.375	1.000	2.00

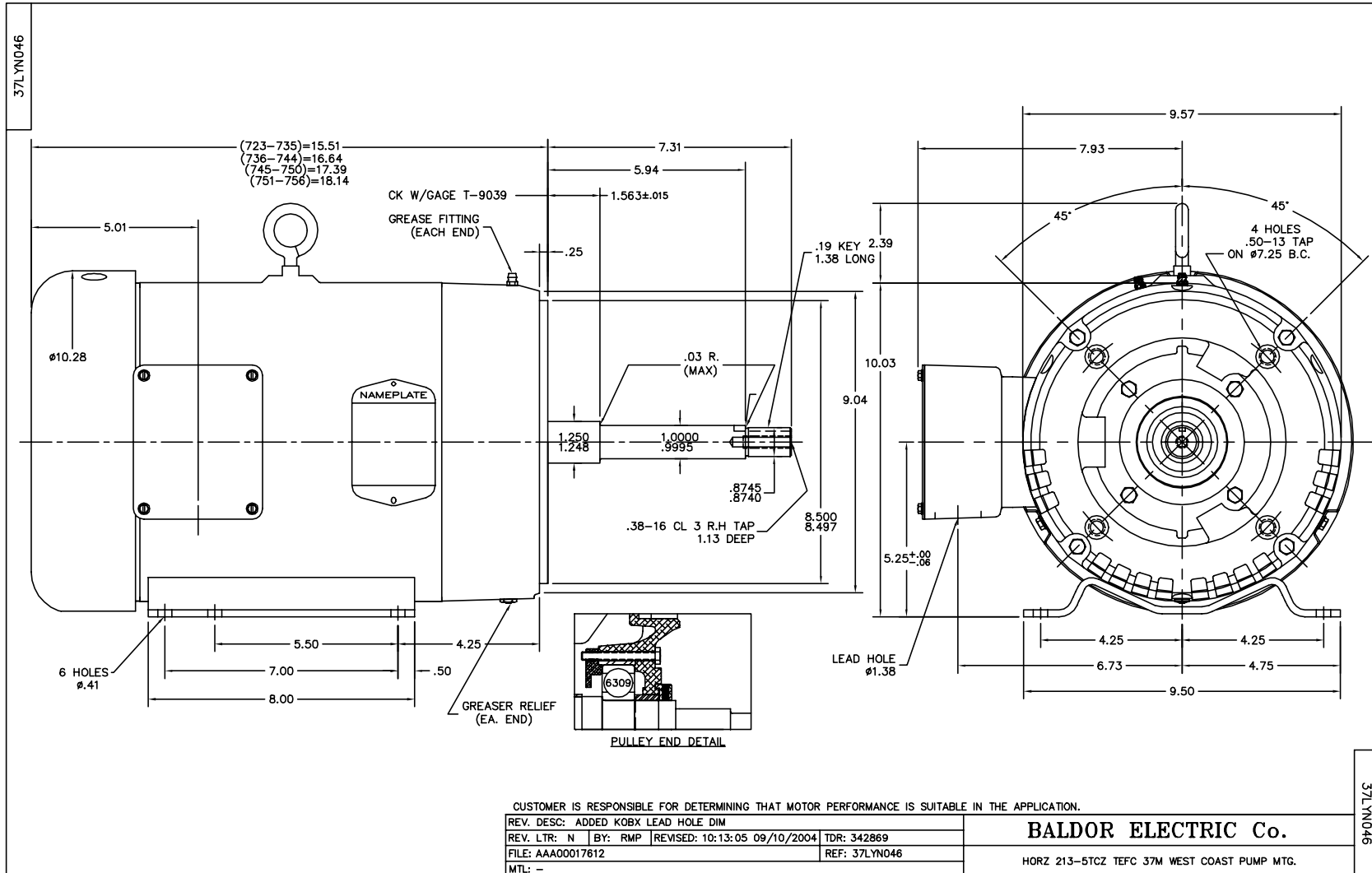
Parts List (continued)			
Product ID	Description	Quantity	List Price
HA7000A01	KEY RETAINER 7/8" DIA SHAFT	1.000	2.00
80XN1032A06	10-32 X 3/8 SET SC HEX SOCK	1.000	2.00
10XF0440S02	04-40 X 1/8 TYPE F HEX HD STAINLESS STIC	2.000	2.00
LB1115	LABEL,LIFTING DEVICE (ON ROLLS0	1.000	2.00
MJ1000A02	GREASE, POLYREX EM EXXON	0.050	10.00
37FN3002A01SP		1.000	27.00
MG1000G27	PAINT- S9282E CHARCOAL GREY	0.028	4,000.00
HA3104A14	THRUBOLT- 5/16-18 X12.125(OHIO)	4.000	4.00
LB1125C01	STD (STOCK) CARTON LABEL BALDOR WITH FLA	1.000	2.00
LC0005E01	CONN.DIA./WARNING LABEL (LC0005/LB1119)	1.000	2.00
NP1256L	NP STD LASER ENGRAVED, UL CSA CC, W/O TH	1.000	3.00
G0PA1000	PACKAGING GROUP	1.000	38.00

Performance Data at 460V, 60Hz, 7.5HP (Typical performance - Not guaranteed values)

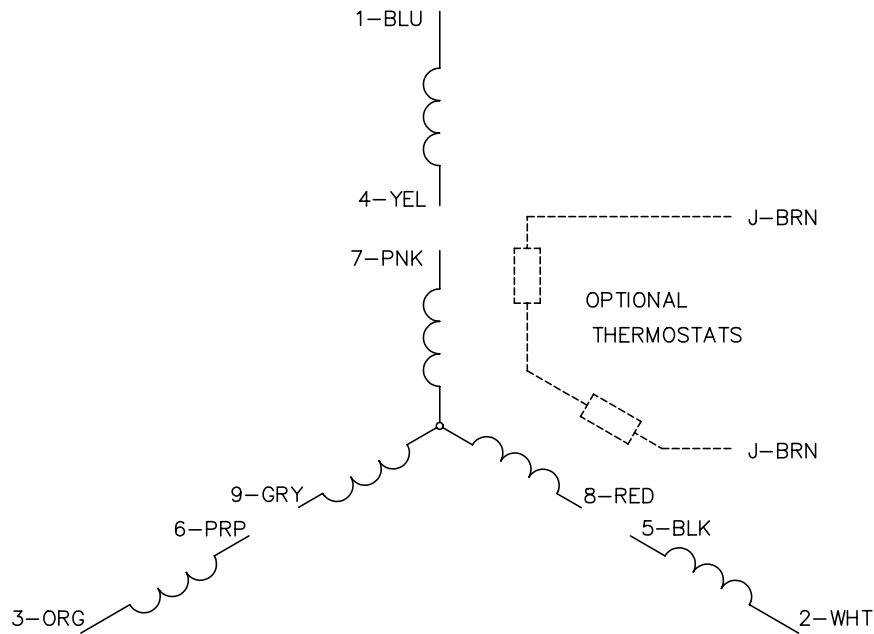
General Characteristics							
Full Load Torque:	11.3 LB-FT			Start Configuration:	DOL		
No-Load Current:	2.4 Amps			Break-Down Torque:	42.0 LB-FT		
Line-line Res. @ 25°C.:	1.87 Ohms A Ph / 0.0 Ohms B Ph			Pull-Up Torque:	23.0 LB-FT		
Temp. Rise @ Rated Load:	94°C			Locked-Rotor Torque:	28.0 LB-FT		
Temp. Rise @ S.F. Load:	112°C			Starting Current:	70.0 Amps		
Load Characteristics							
% of Rated Load:	25	50	75	100	125	150	S.F.
Power Factor:	73.0	86.0	89.0	91.0	92.0	93.0	92.0
Efficiency:	76.9	82.3	84.0	84.1	82.4	80.8	83.1
Speed:	3546.0	3508.0	3465.0	3441.0	3372.0	3324.0	3400.0
Line Amperes:	4.1	5.9	7.9	10.0	12.2	14.4	10.5

Performance Graph at 460V, 60Hz, 7.5HP (Typical performance - Not guaranteed values)

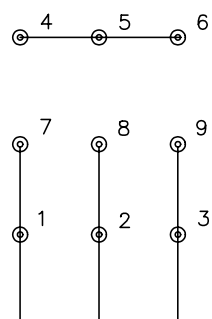




CD0005

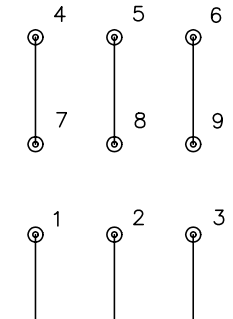


LOW VOLTAGE
(2Y)



LINE

HIGH VOLTAGE
(1Y)



LINE

NOTES:

1. INTERCHANGE ANY TWO LINE LEADS TO REVERSE ROTATION.
2. OPTIONAL THERMOSTATS ARE PROVIDED WHEN SPECIFIED.
3. ACTUAL NUMBER OF INTERNAL PARALLEL CIRCUITS MAY BE A MULTIPLE OF THOSE SHOWN ABOVE.
4. LEAD COLORS ARE OPTIONAL. LEADS MUST ALWAYS BE NUMBERED AS SHOWN.

REV. DESC: REVISE TO SHOW OPTIONAL COLORS			
REV. LTR: E	BY: JLP	REVISED: 01/19/99 10:15	TDR: 0171435
90000		FILE: AAA00005140	MDL: -
		MTL: -	

BALDOR ELECTRIC Co.

3PH, DV, 9 LEADS

CD0005